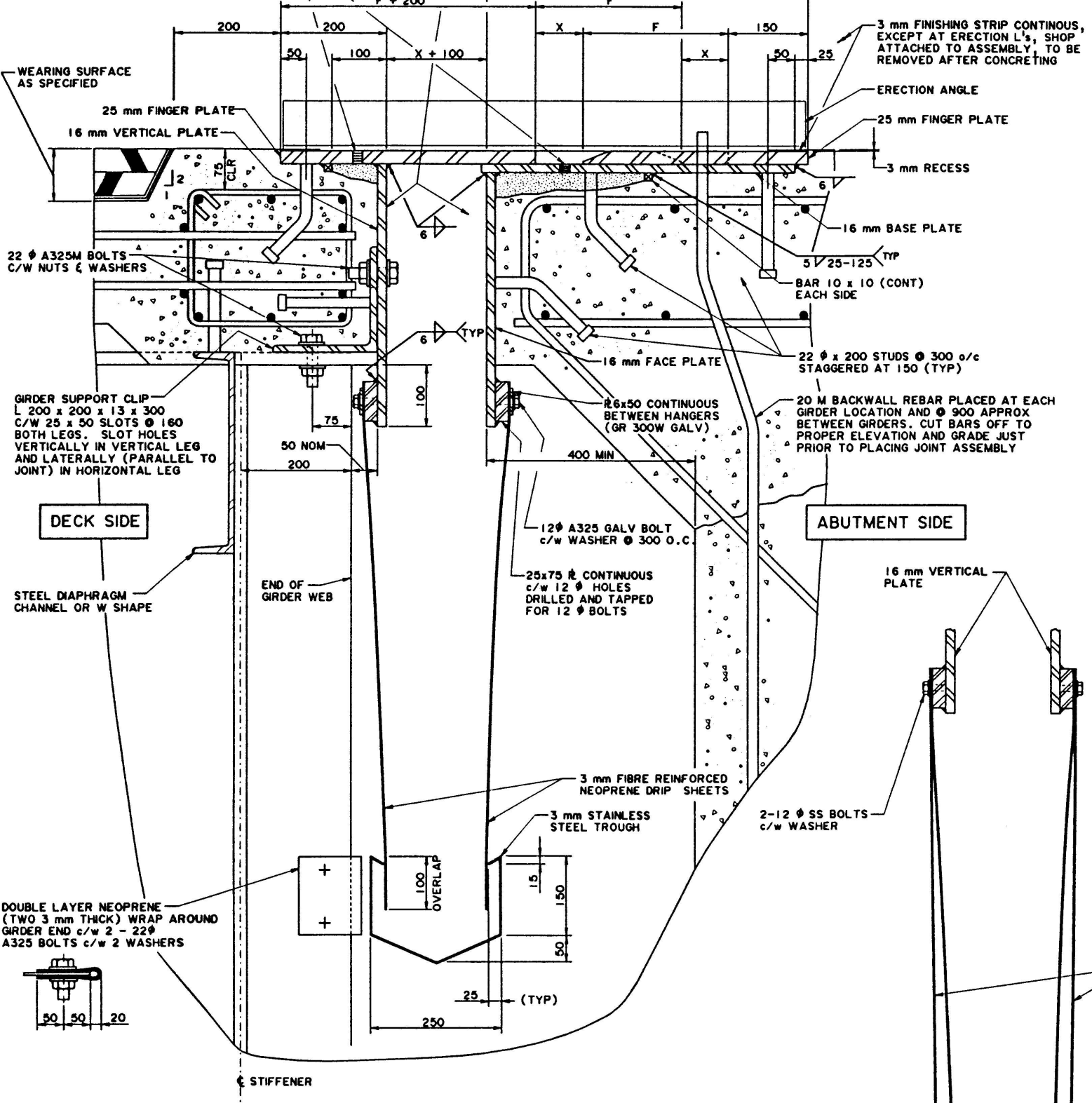


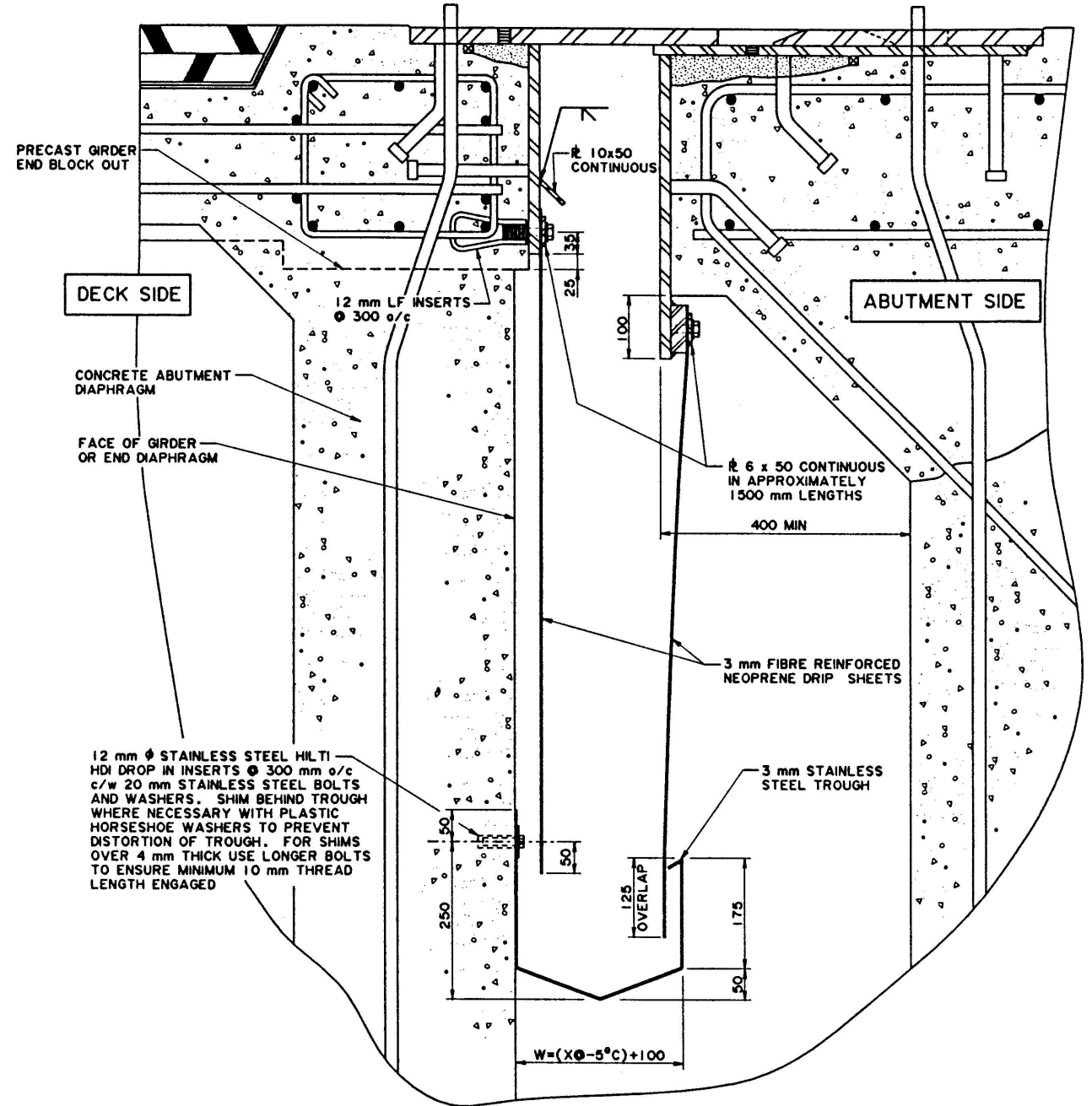
GRAUT HOLES TAPPED FOR 19  $\phi$  (3/4"  $\phi$ )  
 GRAUT PIPE. NATIONAL PIPE THREAD (NPT)  
 PRESSURE GRAUT WITH 40 MPa NON-SHRINK  
 GRAUT AFTER CONCRETE HAS SET



**A** SECTION AT GIRDERS FOR STEEL GIRDERS 1:5

**C** SECTION AT HANGERS FOR STEEL GIRDERS 1:5

FOR REMAINING DETAILS, SEE SECTION A



**B** SECTION FOR CONCRETE GIRDERS 1:5

**GENERAL NOTES**  
 PLUMBING FEATURES SHOWN SHALL BE DEVELOPED AND FULLY DETAILED ON CONTRACT DRAWINGS TO FIT SITE SPECIFIC REQUIREMENTS

MOVEMENT RANGE	X @ -5°	F	X MIN	X MAX	W
300	200	500	50	350	300
250	175	450	50	300	275
200	150	400	50	250	250
150	125	350	50	200	225
100	100	300	50	150	200

**SUPERSEDED BY S-1639  
 REVISION 1, 2005-11-08**

DESIGNED BY		DATE	CHECKED BY	DATE	STREAM	LOCATION	HIGHWAY	FILE	SHEET	DRAWING
WJW		99-02-06	AW	April 27/99					2 of 3	S-1639

APPROVED  
*Allan...*  
 EXECUTIVE DIRECTOR  
 TECHNICAL STANDARDS BRANCH  
 DATE: May 4, 1999

**Alberta TRANSPORTATION AND UTILITIES**  
 TECHNICAL STANDARDS BRANCH

**STANDARD FINGER PLATE  
 DECK JOINT ASSEMBLY  
 TYPICAL CROSS-SECTIONS**