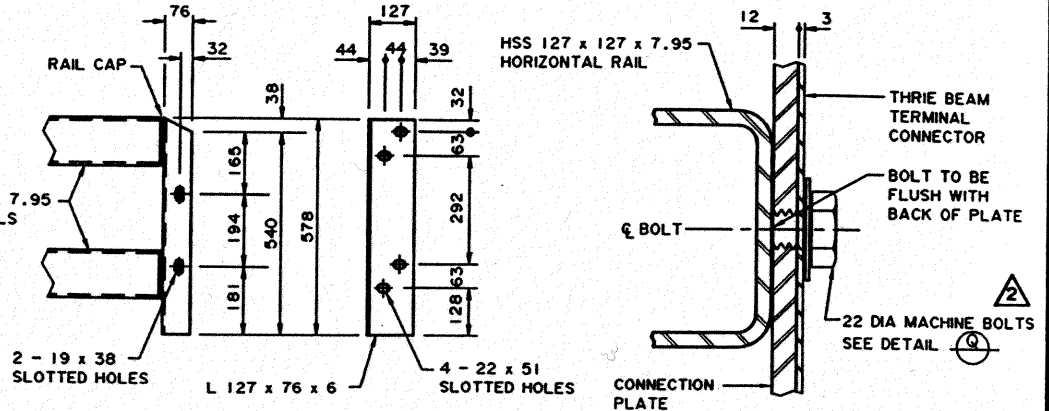
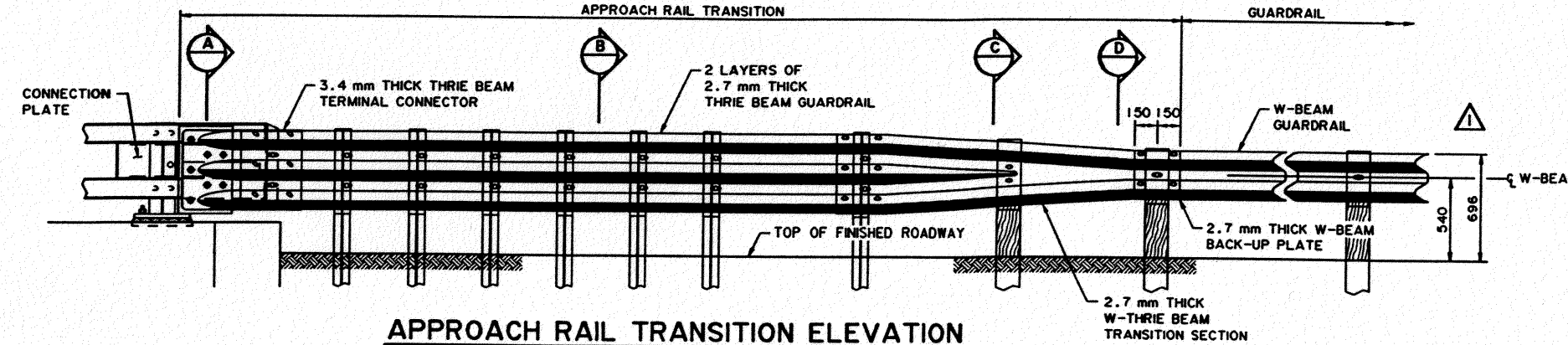


**APPROACH RAIL TRANSITION PLAN**  
1:20

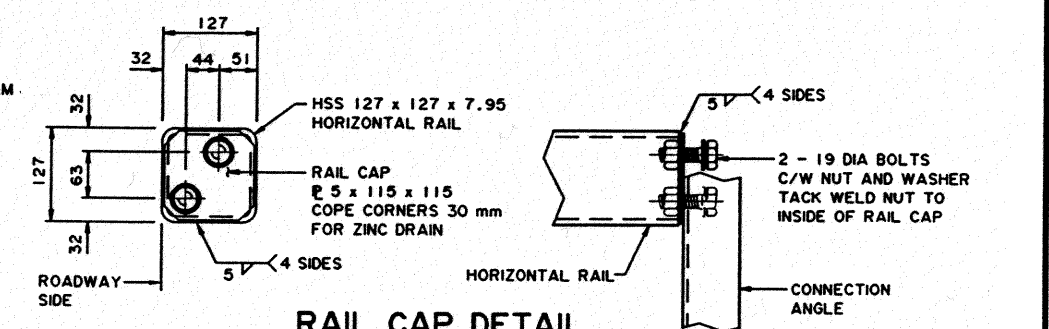


**CONNECTION ANGLE DETAIL**  
1:10

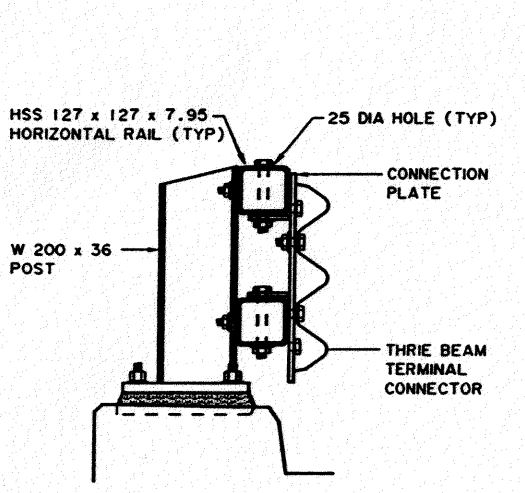
**P DETAIL**  
NTS



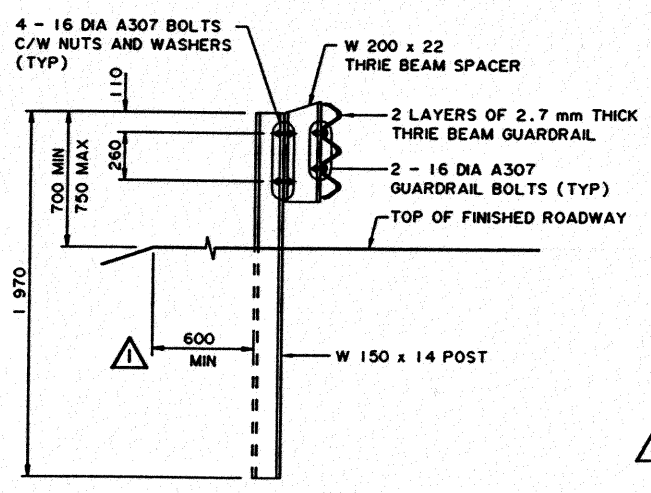
**APPROACH RAIL TRANSITION ELEVATION**  
1:20



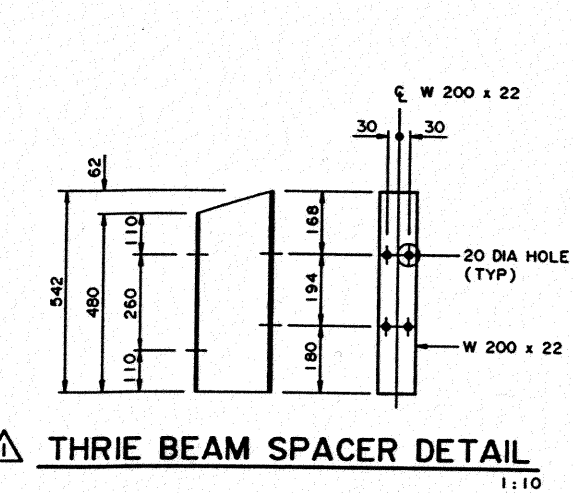
**RAIL CAP DETAIL**  
1:5



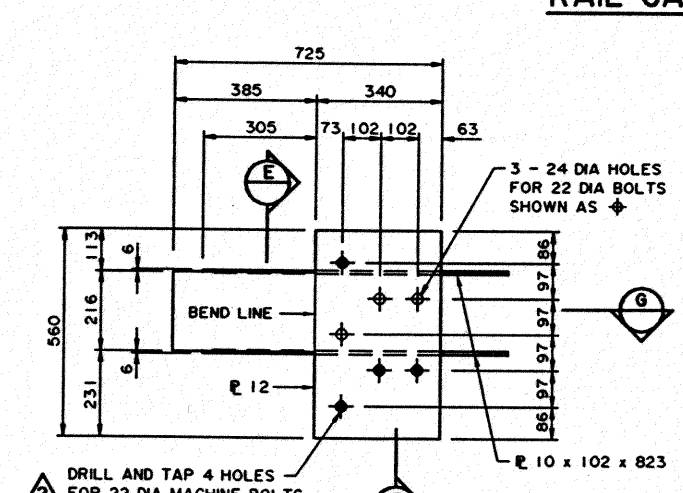
**A SECTION**  
1:10



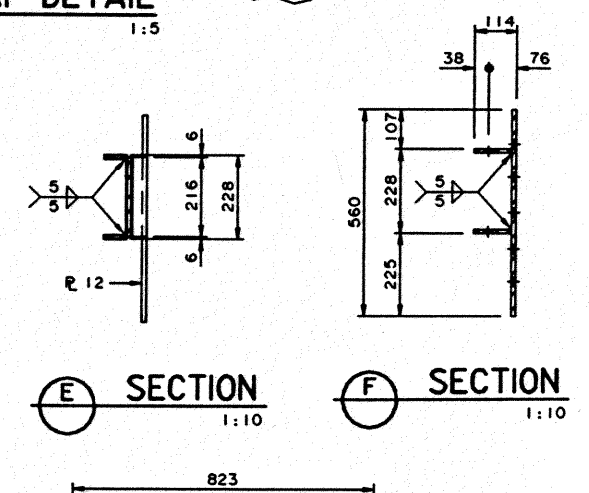
**B SECTION**  
1:20



**THRIE BEAM SPACER DETAIL**  
1:10

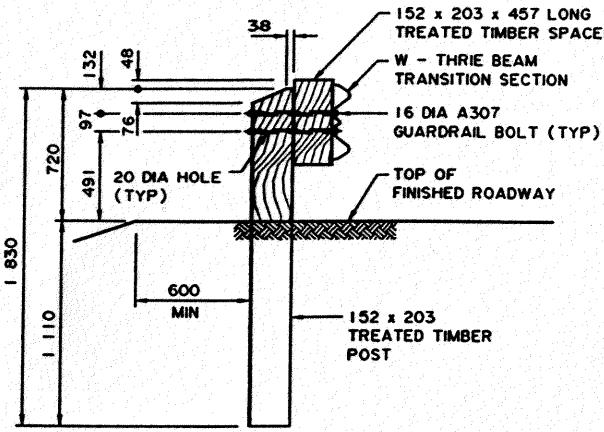


**CONNECTION PLATE DETAIL**  
1:10

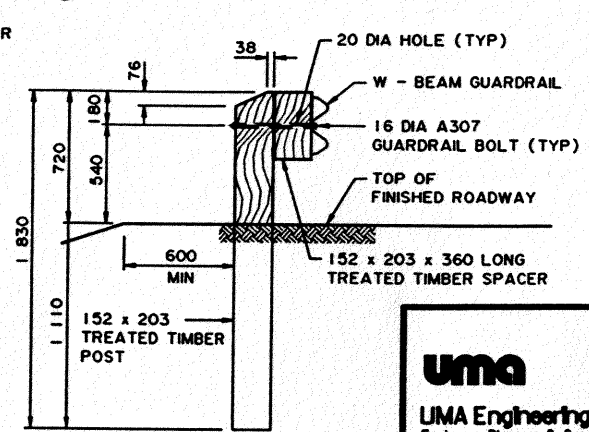


**E SECTION**  
1:10

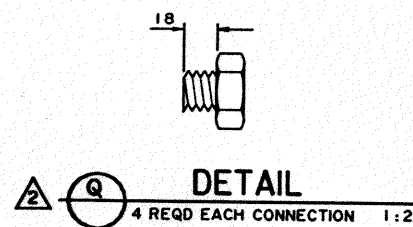
**F SECTION**  
1:10



**C SECTION**  
1:20



**D SECTION**  
1:20



**Q DETAIL**  
1:20

● WORK THESE DRAWINGS TOGETHER: S-1642-00 AND S-1643-00

<p><b>UMA Engineering Ltd.</b> Engineers, Planners &amp; Surveyors</p>	<p>PERMIT TO PRACTICE UMA ENGINEERING LTD. PERMIT NUMBER: P 5778 ORIGINAL SIGNED AND STAMPED BY: ART WASHUTA ON: NOVEMBER 21, 2000 The Association of Professional Engineers, Geologists and Geophysicists of Alberta</p>	<p>DESIGNER PROFESSIONAL ENGINEER ALBERTA BY: R. J. RAMSAY ON: NOV 21, 2000</p>	<p>CHECKER PROFESSIONAL ENGINEER ALBERTA BY: D. B. SERNIK ON: NOV 21, 2000</p>	<p>RECOMMENDED DIRECTOR BRIDGE ENGINEERING</p>	<p>Alberta INFRASTRUCTURE</p>			
				<p>ORIGINAL SIGNED BY REG QUINTON</p>		<p>APPROVED EXECUTIVE DIRECTOR TECHNICAL STANDARDS BRANCH</p>	<p>PL-2 DOUBLE TUBE TYPE BRIDGERAIL APPROACH RAIL TRANSITION DETAILS</p>	
<p>2001-12-03 TIMBER POST DIM. DETAIL "P" AND "Q" AND CONNECTION PLATE</p>				<p>NSP</p>	<p>DATE NOV 22, 2000</p>			
<p>2000.09.20 TIMBER POSTS, DIMENSIONS, MISCELLANEOUS</p>								
REV	DATE	REVISIONS	BY	DATE	<p>AI BAR CODE</p>	<p>DATE 2000-03-30</p>	<p>SHEET 2 of 2</p>	<p>DRAWING S-1643-00</p>

S1643-00.rv2