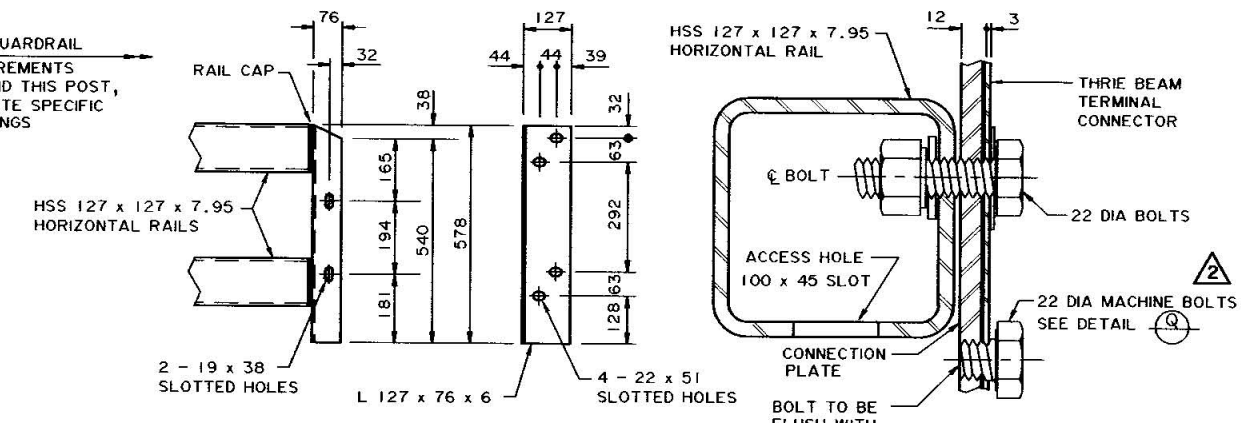
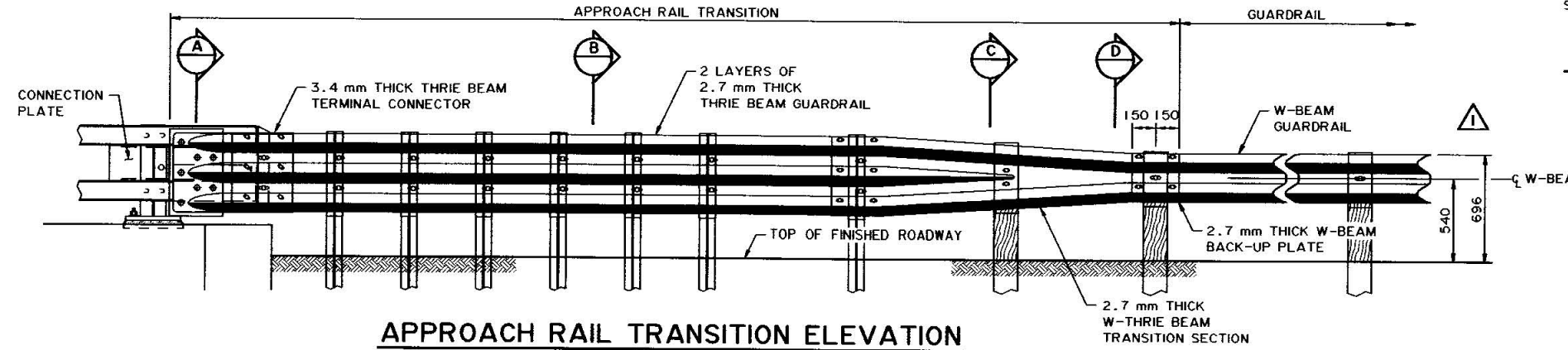


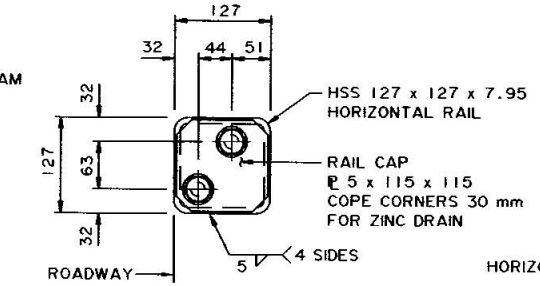
APPROACH RAIL TRANSITION PLAN
1:20



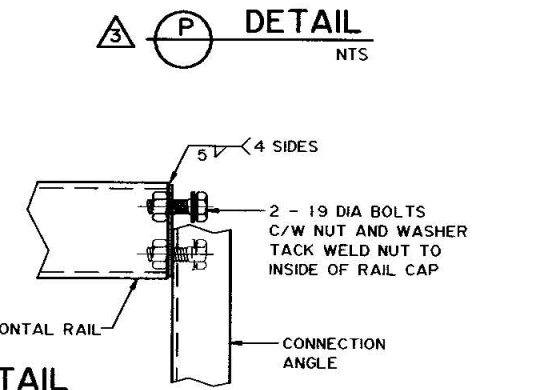
CONNECTION ANGLE DETAIL
1:10



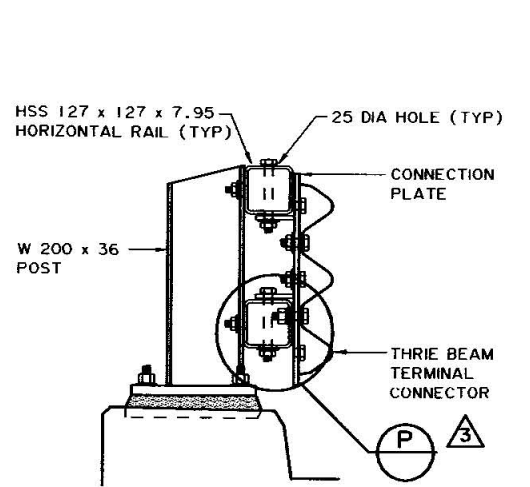
APPROACH RAIL TRANSITION ELEVATION
1:20



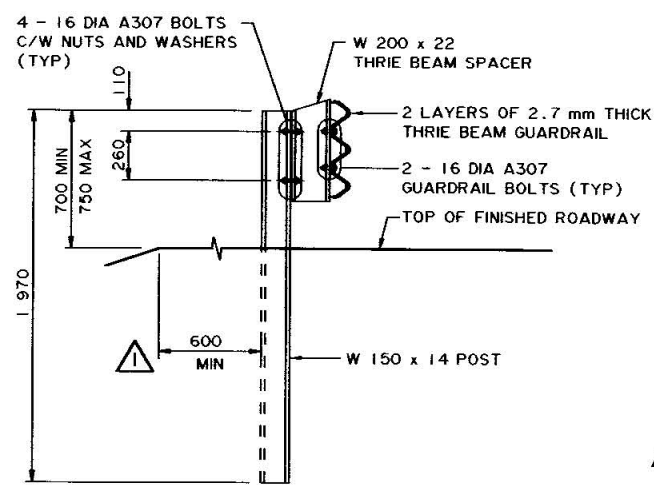
RAIL CAP DETAIL
1:5



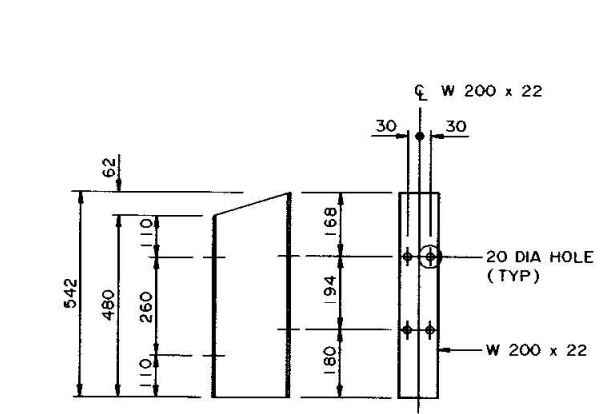
DETAIL P
NTS



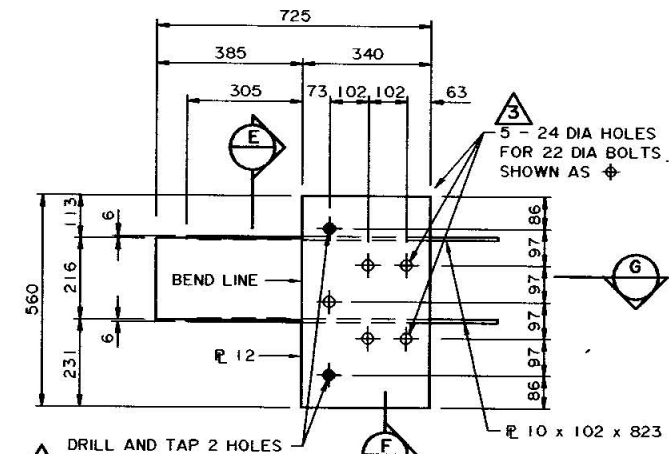
SECTION A
1:10



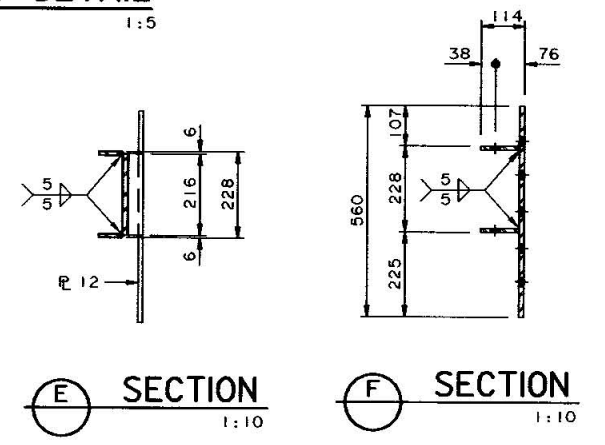
SECTION B
1:20



THRIE BEAM SPACER DETAIL
1:10

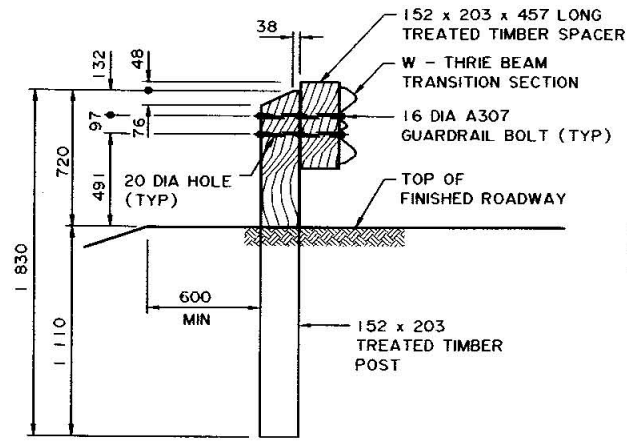


CONNECTION PLATE DETAIL
1:10

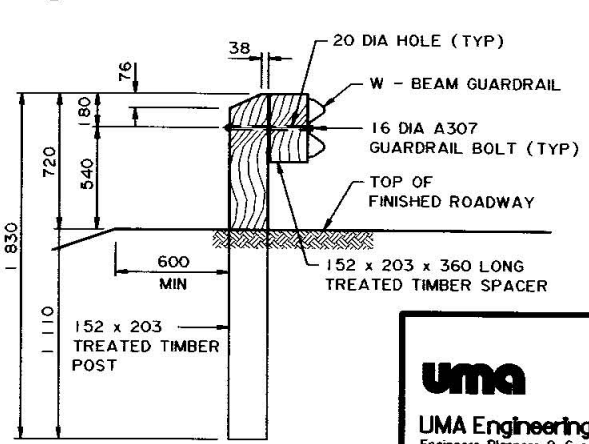


SECTION E
1:10

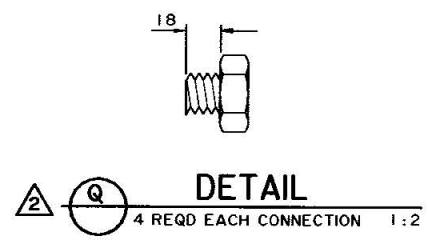
SECTION F
1:10



SECTION C
1:20



SECTION D
1:20



DETAIL Q
1:2

- 1 DRILL AND TAP 2 HOLES FOR 22 DIA MACHINE BOLTS SHOWN AS
- 2 SEE DETAIL P, Q, THIS DRAWING.
- 3

**SUPERSEDED BY S-1643-00
REVISION 4, 2007-02-14**

• WORK THESE DRAWINGS TOGETHER: S-1642-00 AND S-1643-00

 UMA Engineering Ltd. Engineers, Planners & Surveyors		PERMIT TO PRACTICE UMA ENGINEERING LTD. PERMIT NUMBER: P 5778 ORIGINAL SIGNED AND STAMPED BY: <u>ART WASHUTA</u> ON: <u>NOVEMBER 21, 2000</u> <small>The Association of Professional Engineers, Geologists and Geophysicists of Alberta</small>		DESIGNER ORIGINAL STAMPED AND SIGNED BY: <u>R.J. RAMSAY</u> ON: <u>NOV 21, 2000</u> <small>PROFESSIONAL ENGINEER ALBERTA</small>		CHECKER ORIGINAL STAMPED AND SIGNED BY: <u>D.B. SERINK</u> ON: <u>NOV 21, 2000</u> <small>PROFESSIONAL ENGINEER ALBERTA</small>		RECOMMENDED DIRECTOR BRIDGE ENGINEERING ORIGINAL SIGNED BY <u>REG QUINTON</u> APPROVED EXECUTIVE DIRECTOR <small>TECHNICAL STANDARDS BRANCH</small> ORIGINAL SIGNED BY <u>TIM HAWNT</u>		Alberta INFRASTRUCTURE PL-2 DOUBLE TUBE TYPE BRIDGERAIL APPROACH RAIL TRANSITION DETAILS	
REV	DATE	REVISIONS	BY	DATE	NOV 22, 2000	DATE 2000-03-30 SHEET 2 of 2 DRAWING S-1643-00					

S1643-00.rv3