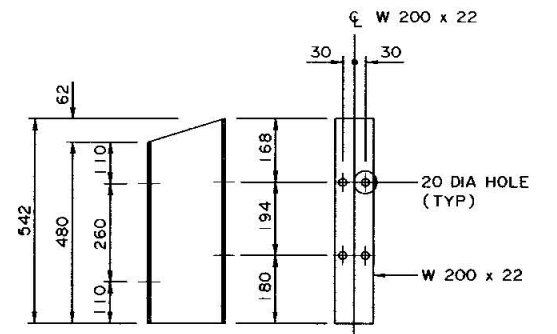
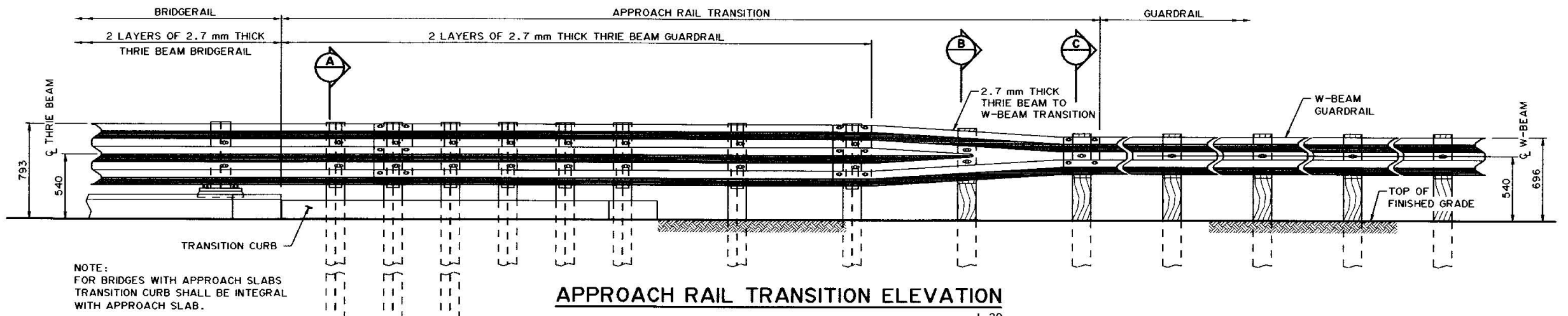


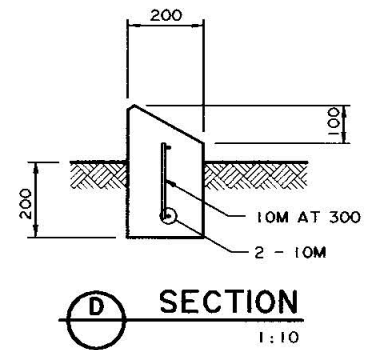
APPROACH RAIL TRANSITION PLAN
1:20



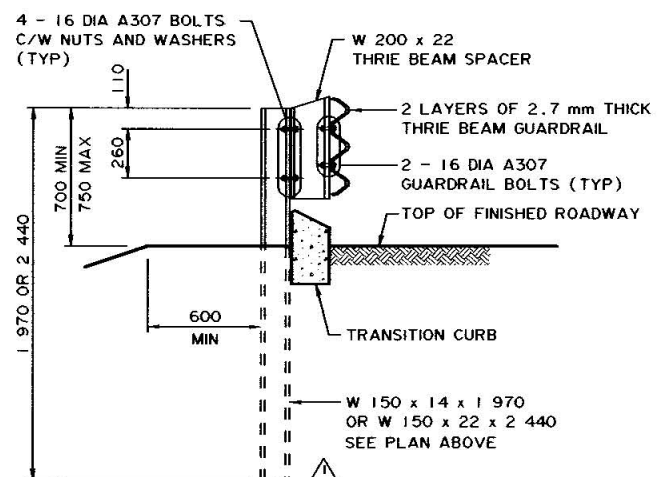
THRIE BEAM SPACER DETAIL
1:10



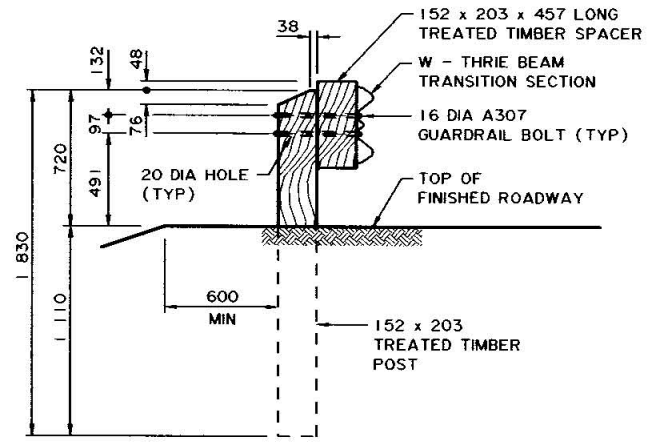
APPROACH RAIL TRANSITION ELEVATION
1:20



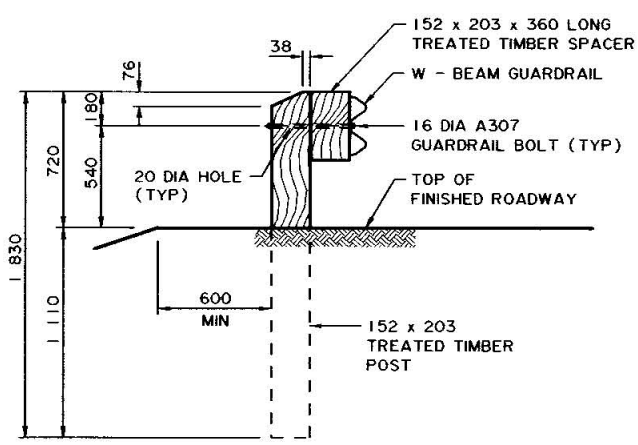
SECTION D
1:10



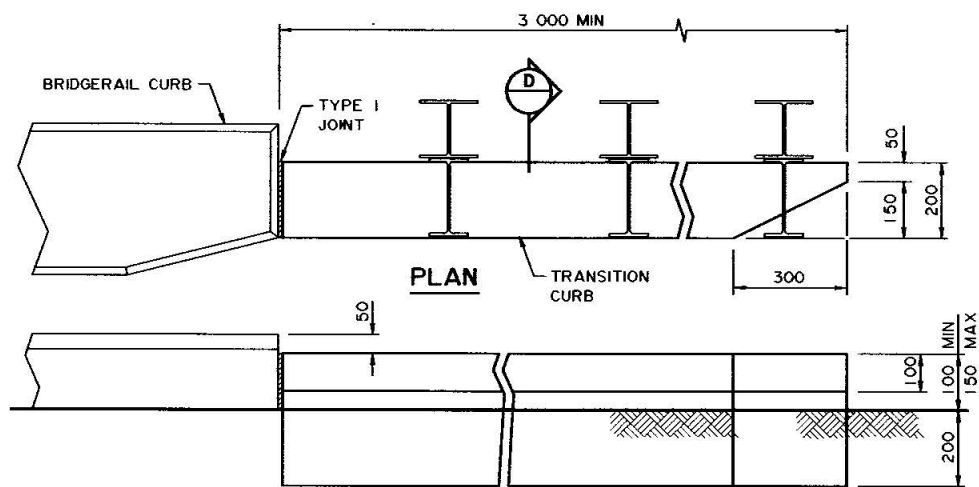
SECTION A
1:20



SECTION B
1:20



SECTION C
1:20



TRANSITION CURB DETAIL
1:10

**SUPERSEDED BY S-1649-00
REVISION 2, 2007-02-14**

● WORK THESE DRAWINGS TOGETHER: S-1648-00 AND S-1649-00

<p>UMA Engineering Ltd. Engineers, Planners & Surveyors</p>	<p>PERMIT TO PRACTICE UMA ENGINEERING LTD. PERMIT NUMBER: P 5778 ORIGINAL SIGNED AND STAMPED BY: ART WASHUTA ON: NOVEMBER 21 2000 The Association of Professional Engineers, Geologists and Geophysicists of Alberta</p>	<p>DESIGNER ORIGINAL STAMPED AND SIGNED BY: R.J. RAMSAY ON: NOV 21 2000</p>	<p>CHECKER ORIGINAL STAMPED AND SIGNED BY: D.B. SERNIK ON: NOV 21 2000</p>	<p>2004-03-01</p>	<p>SECTION "A" NOTE, RAIL TRANSITION PLAN</p>	<p>RECOMMENDED DIRECTOR BRIDGE ENGINEERING</p>	<p>ORIGINAL SIGNED BY REG QUINTON</p>	<p>APPROVED EXECUTIVE DIRECTOR TECHNICAL STANDARDS BRANCH</p>	<p>ORIGINAL SIGNED BY TIM HAWNT</p>	<p>Alberta INFRASTRUCTURE</p>	<p>PL-2 THRIE BEAM ON CURB BRIDGERAIL APPROACH RAIL TRANSITION DETAILS</p>