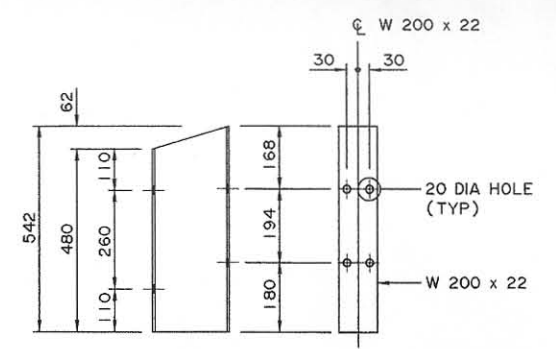
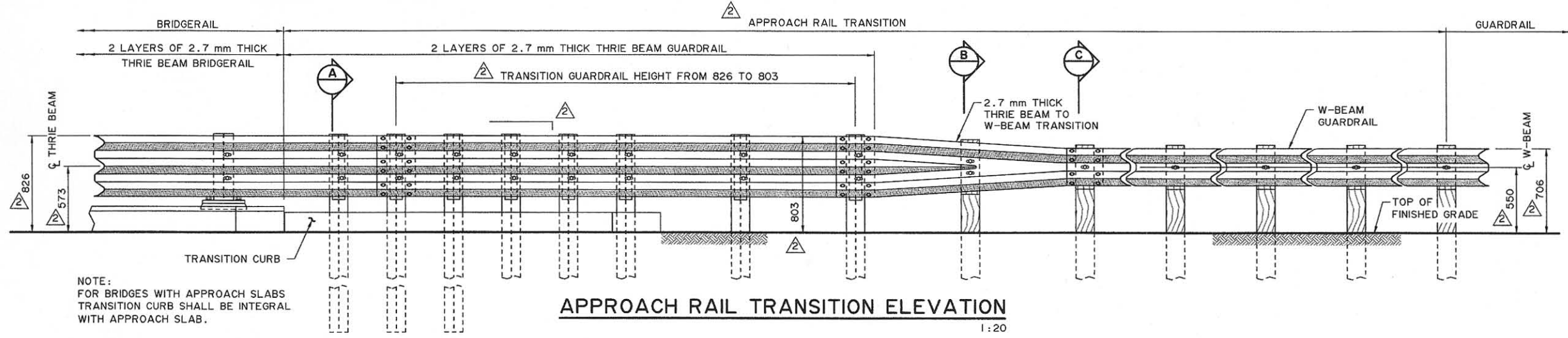


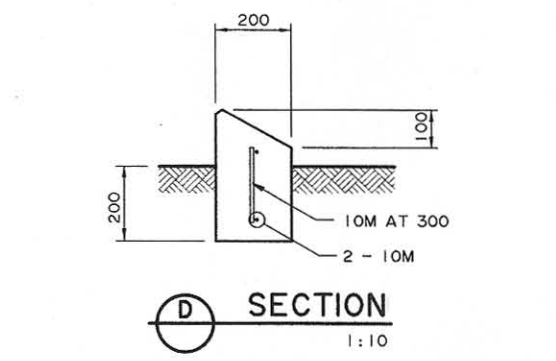
**APPROACH RAIL TRANSITION PLAN**  
1:20



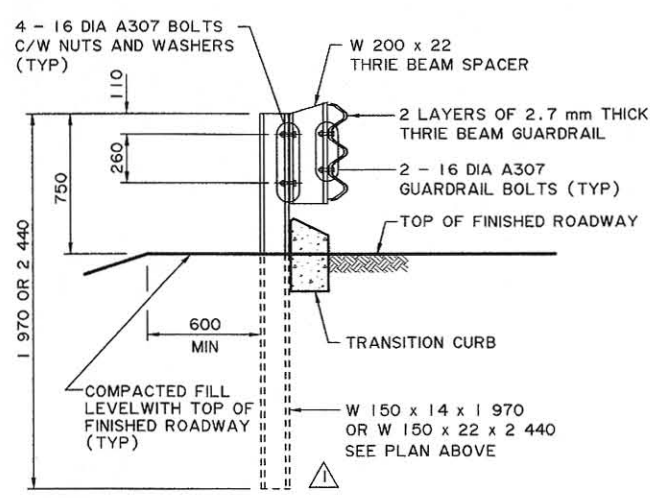
**THRIE BEAM SPACER DETAIL**  
1:10



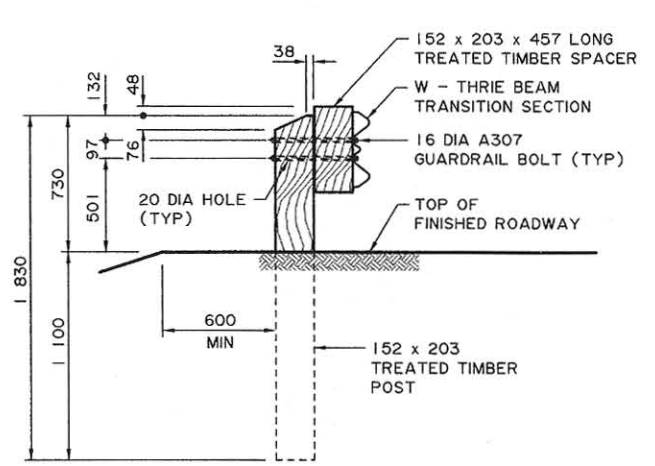
**APPROACH RAIL TRANSITION ELEVATION**  
1:20



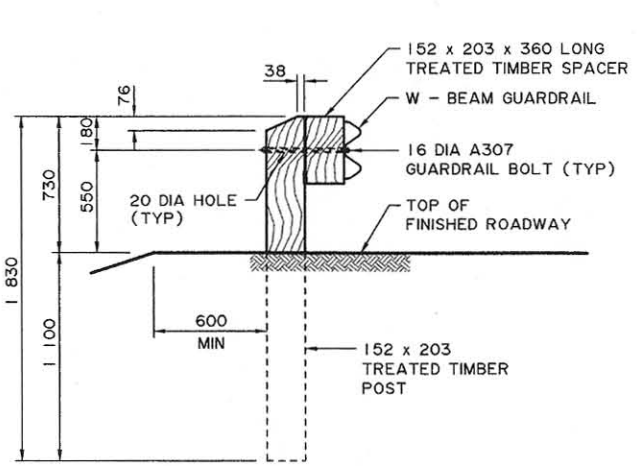
**SECTION D**  
1:10



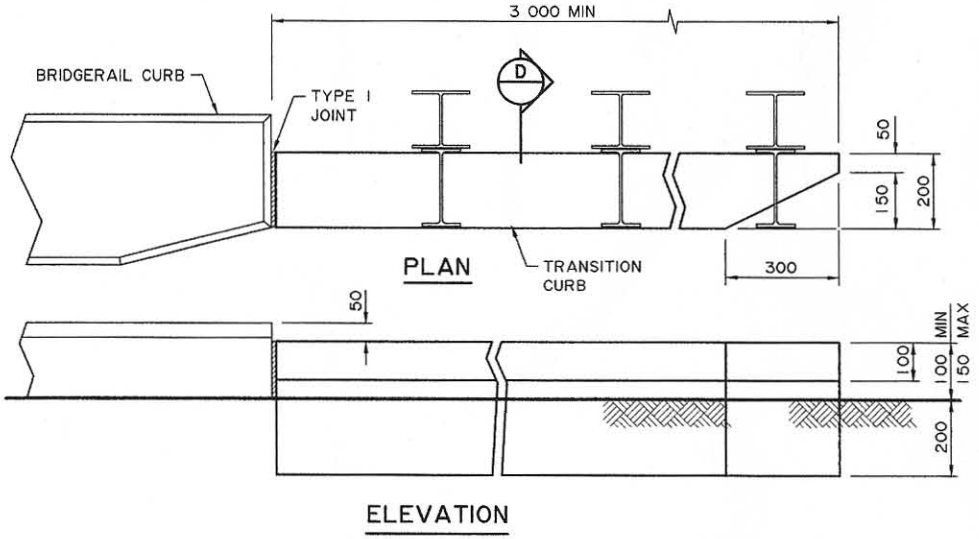
**SECTION A**  
1:20



**SECTION B**  
1:20



**SECTION C**  
1:20



**TRANSITION CURB DETAIL**  
1:10

● WORK THESE DRAWINGS TOGETHER: S-1648-00 AND S-1649-00

<p>UMA Engineering Ltd. Engineers, Planners &amp; Surveyors</p>	<p>PERMIT TO PRACTICE UMA ENGINEERING LTD. PERMIT NUMBER: P 5778 ORIGINAL SIGNED AND STAMPED BY: ART WASHUTA ON: NOVEMBER 21 2000 The Association of Professional Engineers, Geologists and Geophysicists of Alberta</p>	<p>DESIGNER ORIGINAL STAMPED AND SIGNED BY: R. J. RAMSAY ON: NOV 21, 2000</p>	<p>CHECKER ORIGINAL STAMPED AND SIGNED BY: D. B. SERINK ON: NOV 21, 2000</p>	<p>RECOMMENDED DIRECTOR BRIDGE ENGINEERING</p>	<p>ORIGINAL SIGNED BY REG QUINTON</p>	
				<p>APPROVED EXECUTIVE DIRECTOR TECHNICAL STANDARDS BRANCH</p>		<p>ORIGINAL SIGNED BY TIM HAWNT</p>
<p>2007-02-14 APPROACH RAIL LENGTH &amp; HEIGHT</p>				<p>DATE NOV 22, 2000</p>	<p>SHEET 2 OF 2</p>	<p>DRAWING S-1649-00</p>
<p>2004-03-01 SECTION "A" NOTE, RAIL TRANSITION PLAN</p>						
<p>REV DATE REVISIONS BY</p>				<p>DATE NOV 22, 2000</p>		

S1649X00.rv2