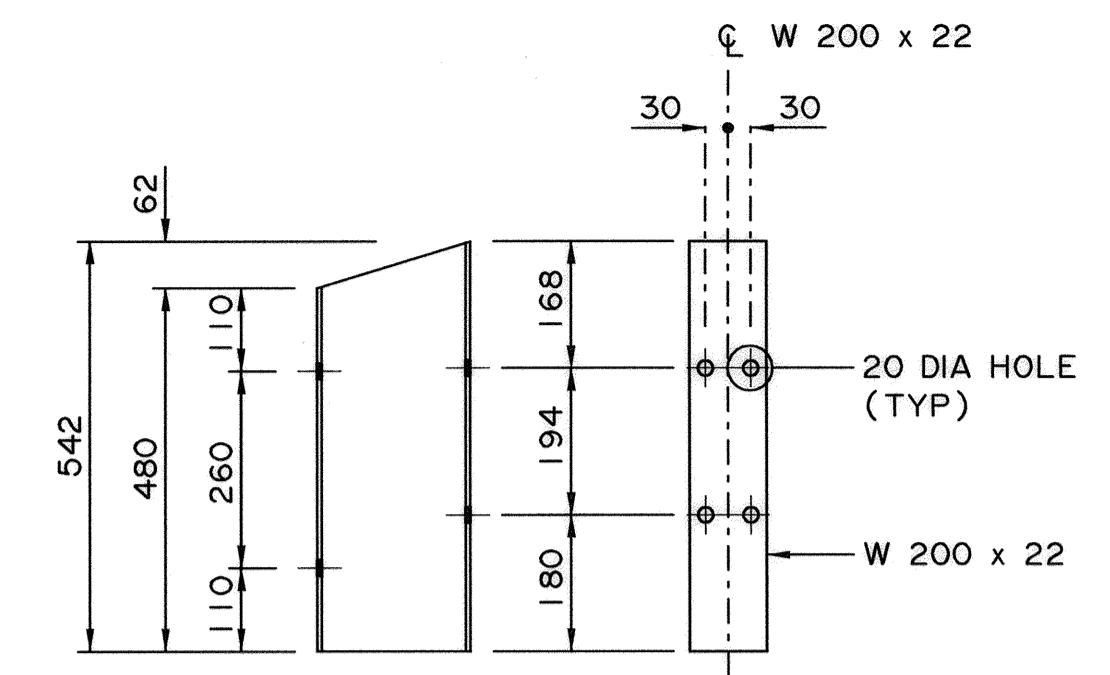
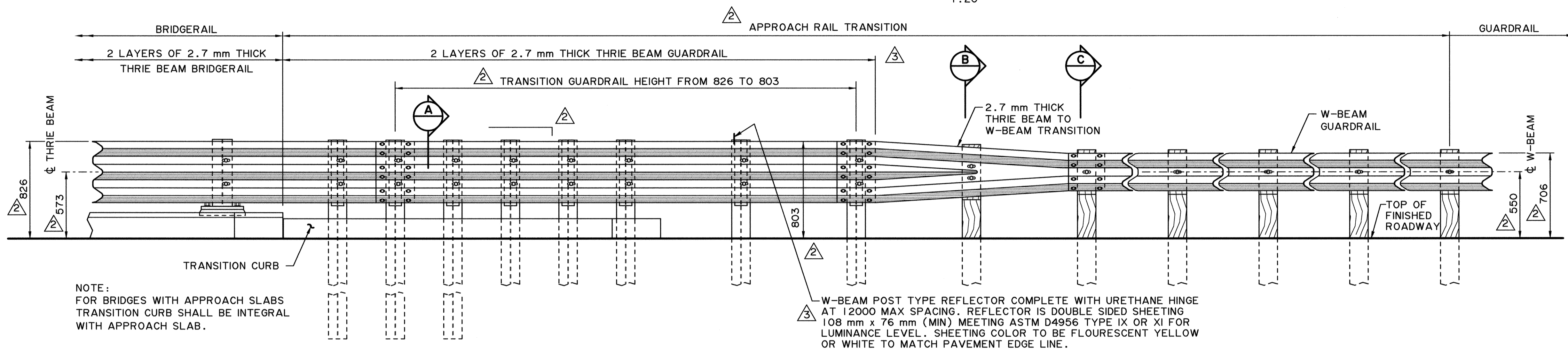


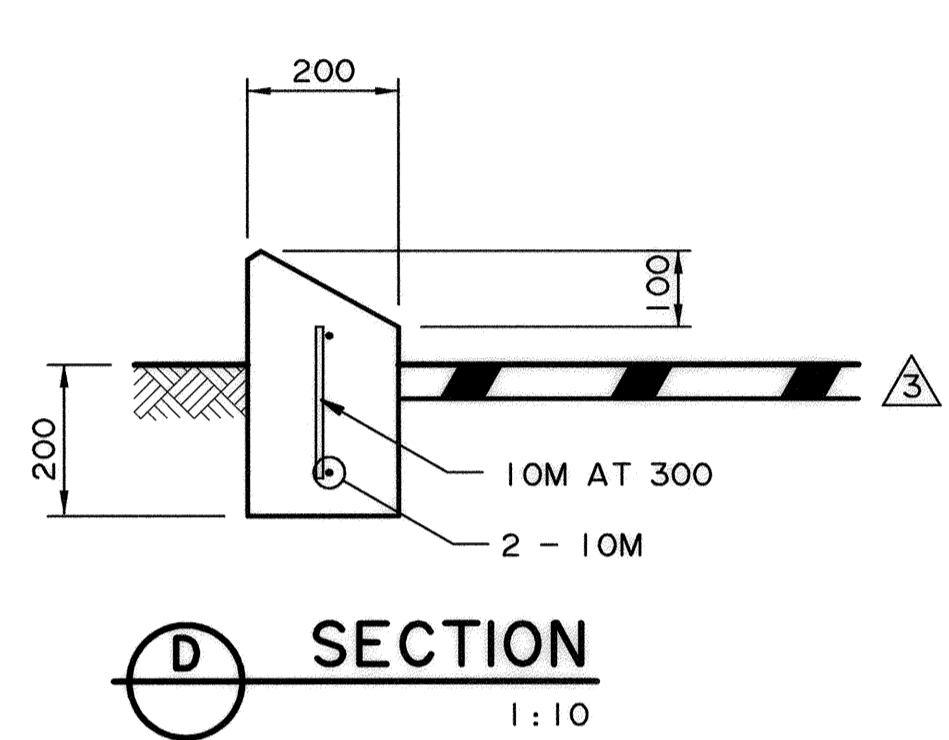
APPROACH RAIL TRANSITION PLAN
1:20



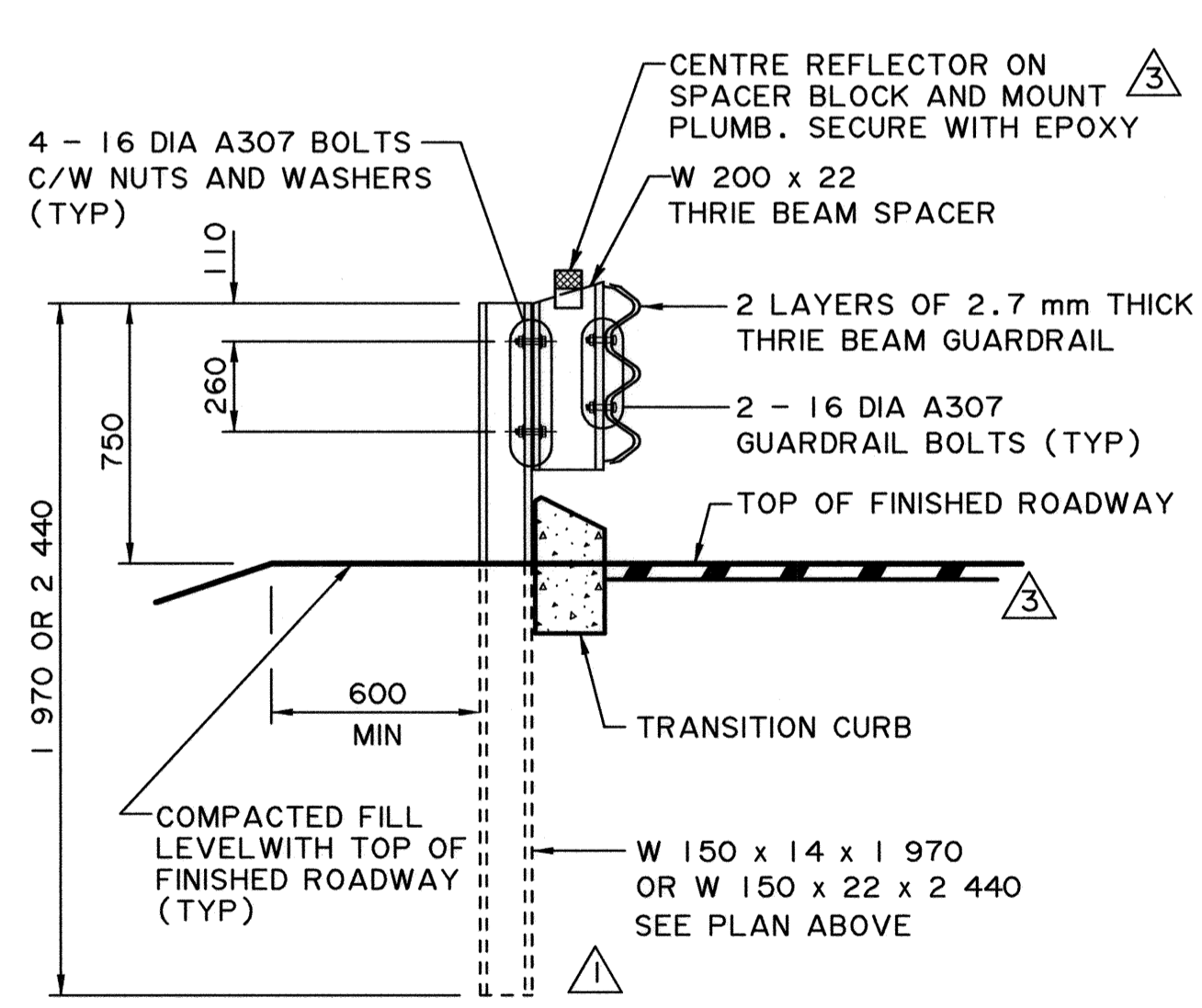
THRIE BEAM SPACER DETAIL
1:10



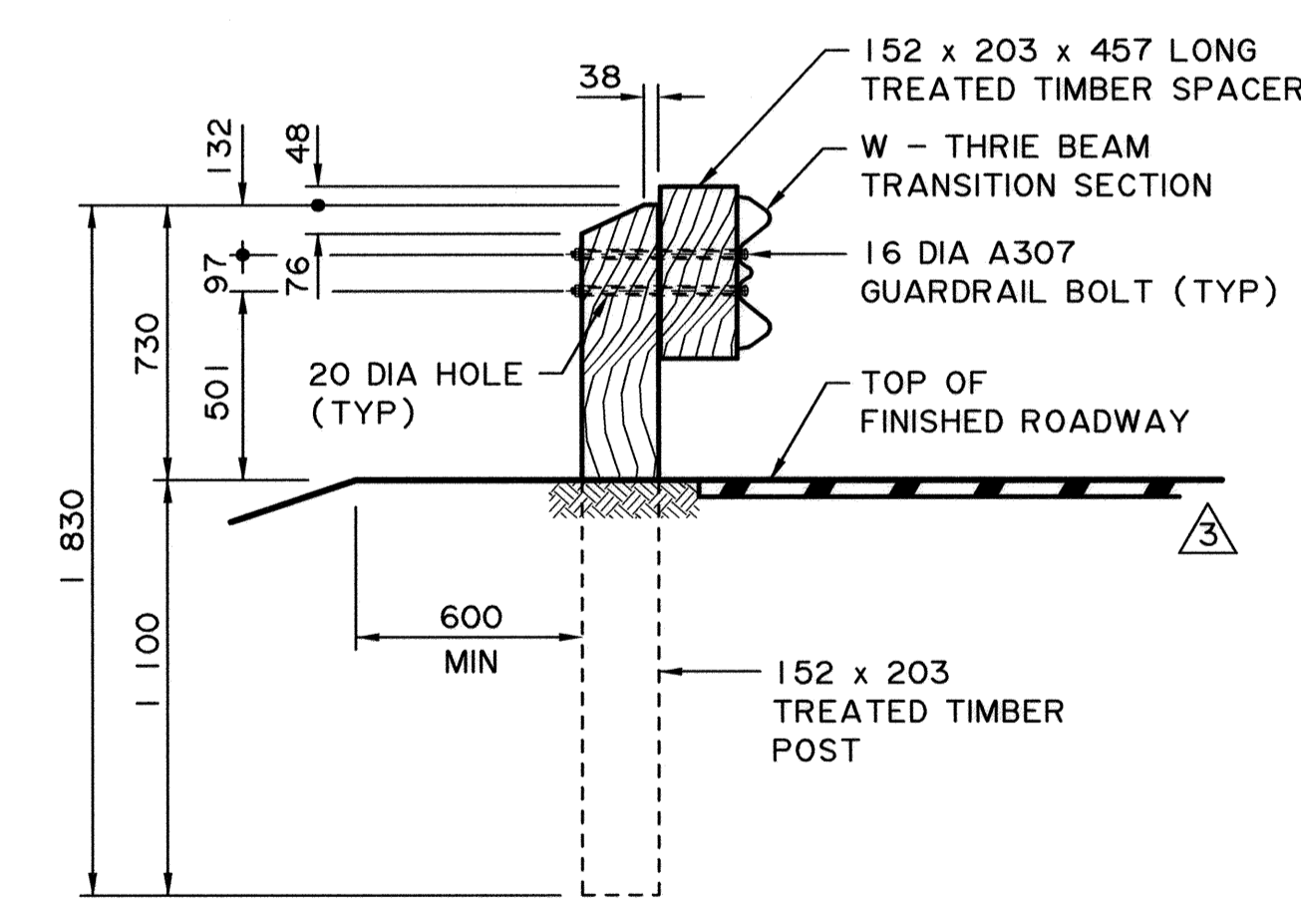
APPROACH RAIL TRANSITION ELEVATION
1:20



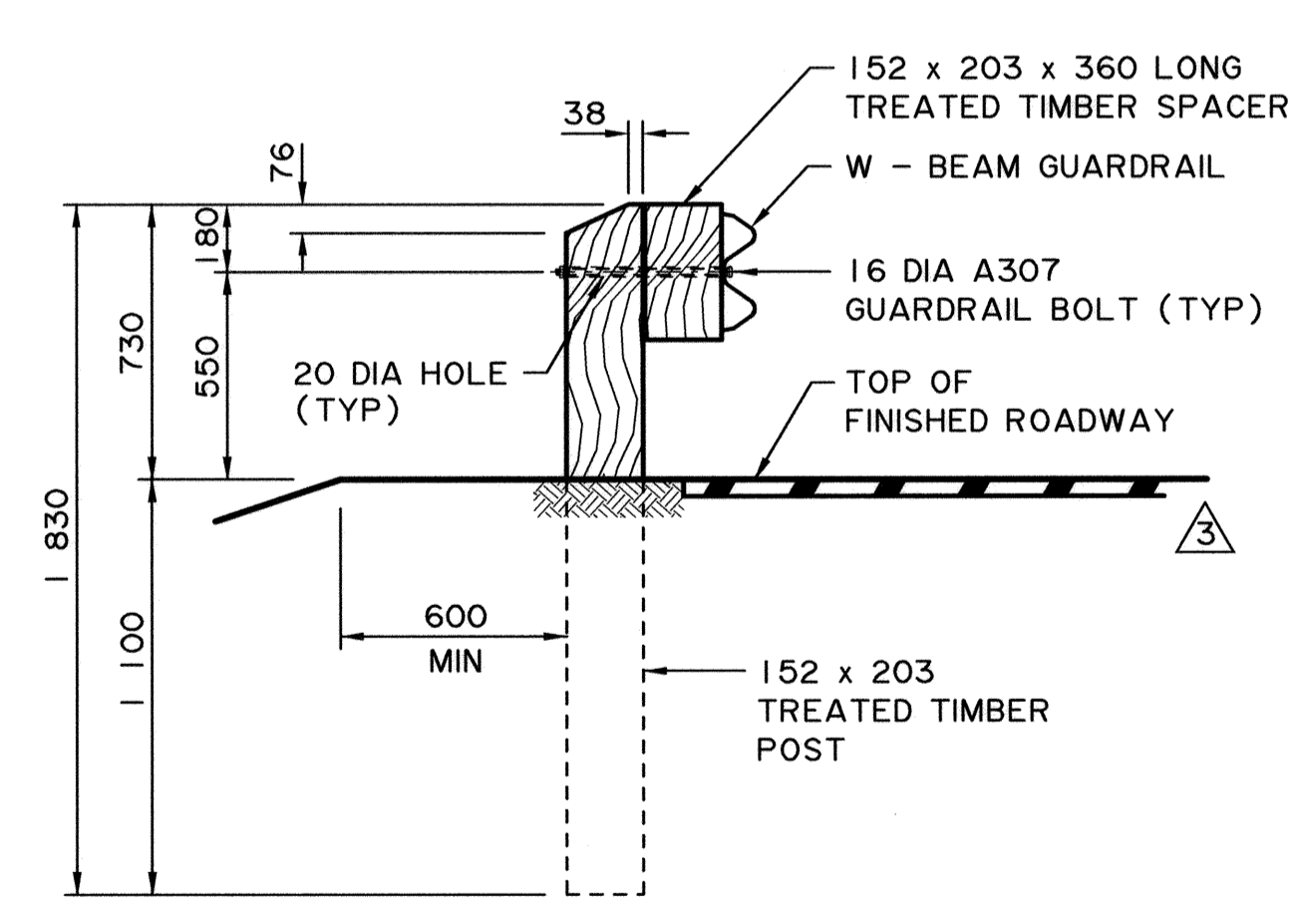
SECTION D
1:10



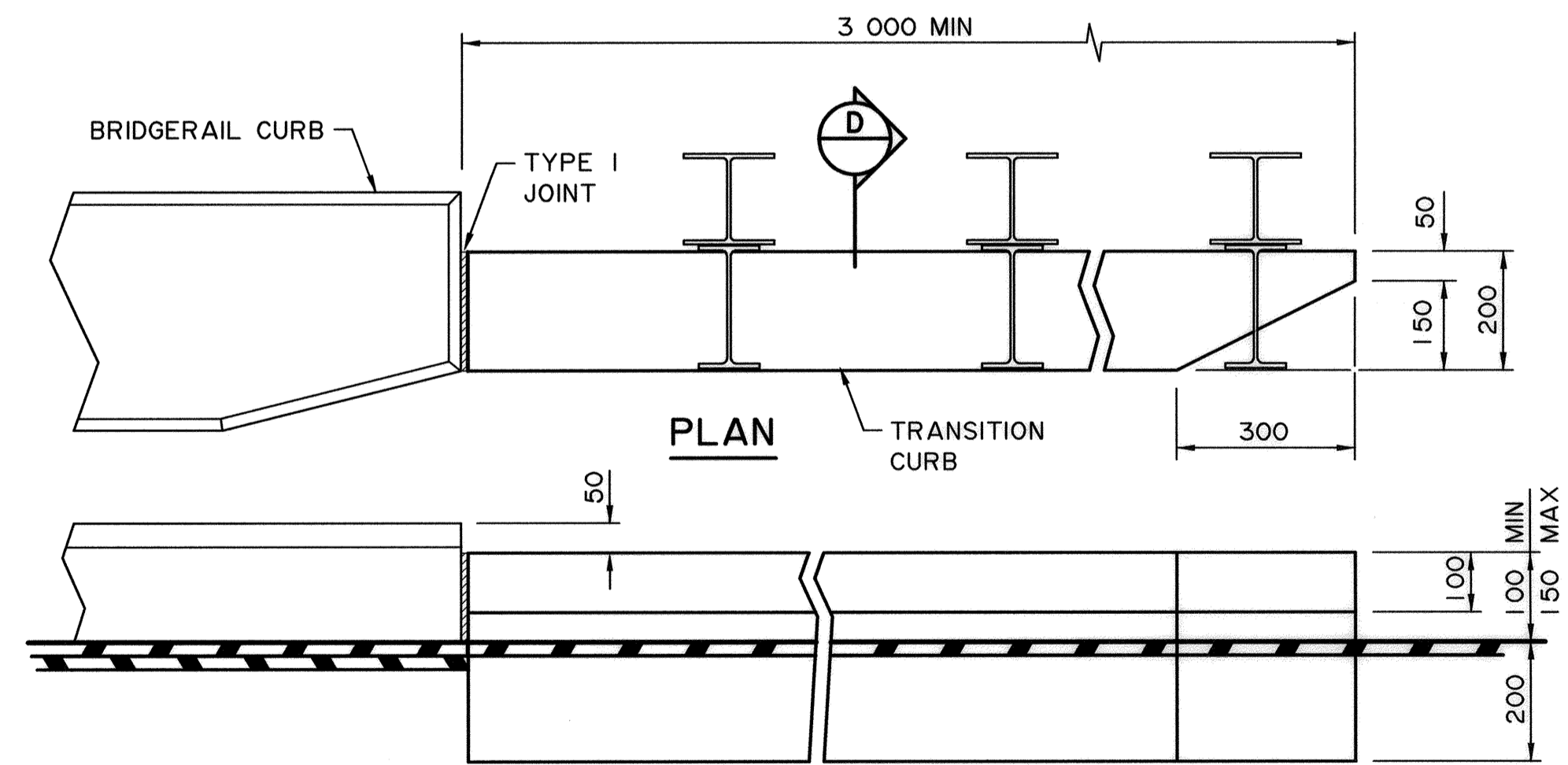
SECTION A
1:20



SECTION B
1:20



SECTION C
1:20



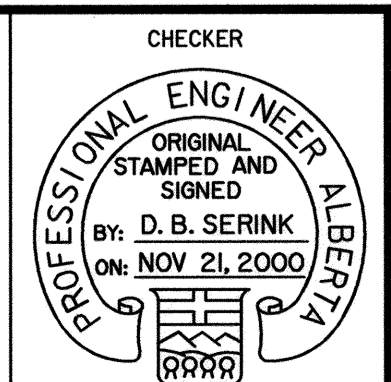
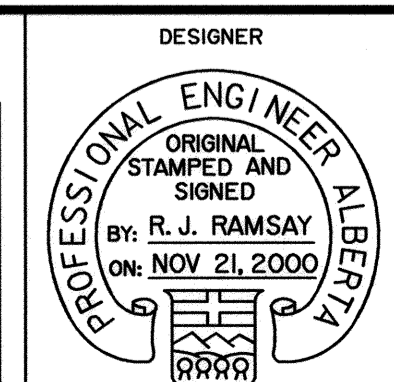
TRANSITION CURB DETAIL
1:10

• WORK THESE DRAWINGS TOGETHER: S-1648 AND S-1649

S1649X00.rvt 3
2012-02-23
NH



PERMIT TO PRACTICE
UMA ENGINEERING LTD.
PERMIT NUMBER: P 5778
ORIGINAL SIGNED AND STAMPED
BY: ART WASHUTA
ON: NOVEMBER 21, 2000
The Association of Professional Engineers,
Geologists and Geophysicists of Alberta



REV	DATE	REVISIONS	BY
1	2012-02-23	REFLECTORS AND ACP ADDED	CM
2	2007-02-14	APPROACH RAIL LENGTH & HEIGHT	RY
3	2004-03-01	SECTION "A" NOTE, RAIL TRANSITION PLAN	RY

RECOMMENDED
DIRECTOR BRIDGE ENGINEERING
ORIGINAL SIGNED BY
REG QUINTON
APPROVED
EXECUTIVE DIRECTOR
TECHNICAL STANDARDS BRANCH
ORIGINAL SIGNED BY
TIM HAWNT
DATE NOV 22, 2000

Alberta INFRASTRUCTURE

**PL-2 THRIE BEAM ON CURB
BRIDGERAIL
APPROACH RAIL TRANSITION DETAILS**

AI BAR CODE	DATE	SHEET	DRAWING
	2000-06-21	2 of 2	S-1649-00