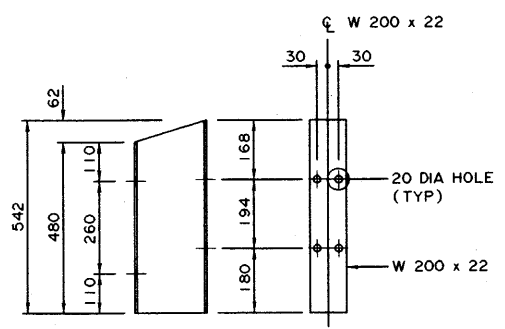


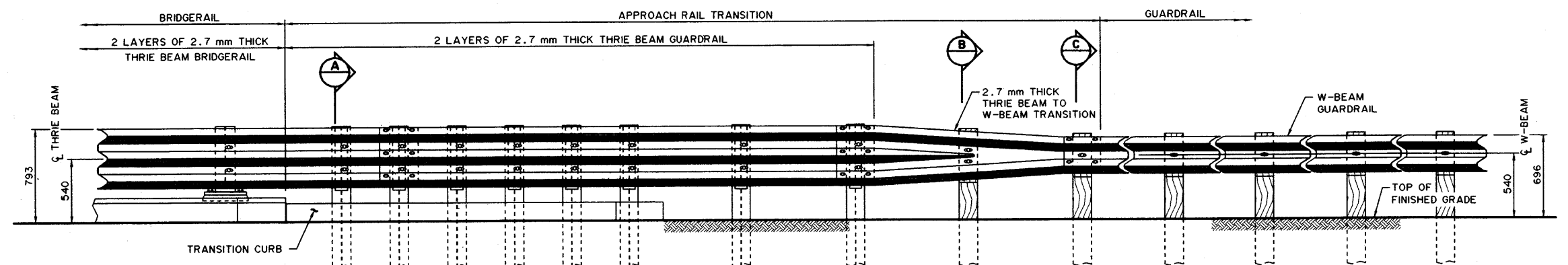
APPROACH RAIL TRANSITION PLAN

1:20



THRIE BEAM SPACER DETAIL

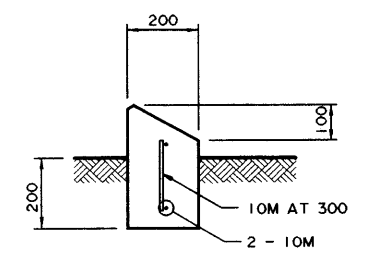
1:10



APPROACH RAIL TRANSITION ELEVATION

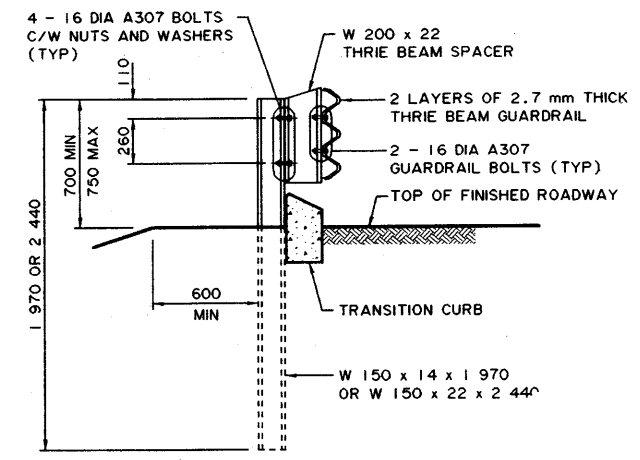
1:20

NOTE:
FOR BRIDGES WITH APPROACH SLABS
TRANSITION CURB SHALL BE INTEGRAL
WITH APPROACH SLAB.



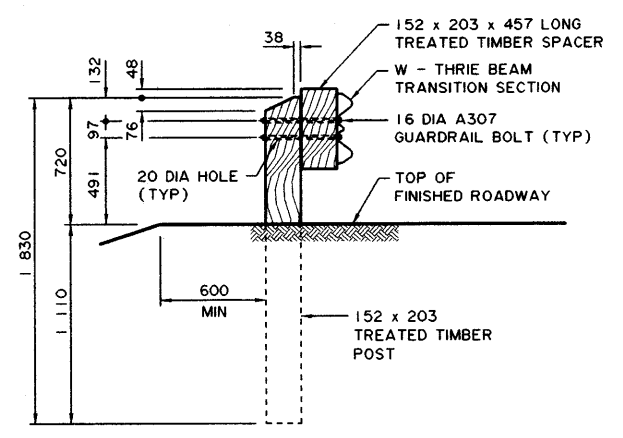
SECTION D

1:10



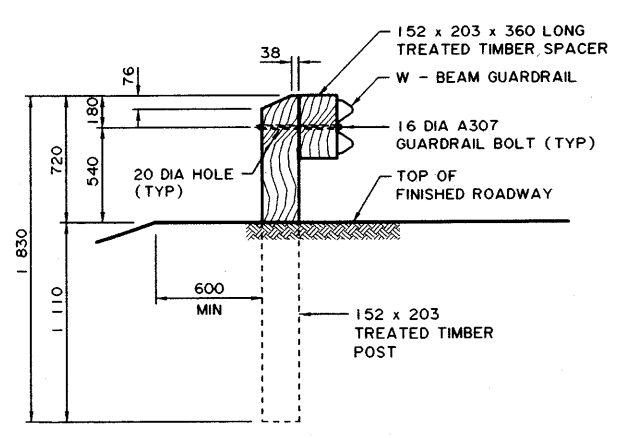
SECTION A

1:20



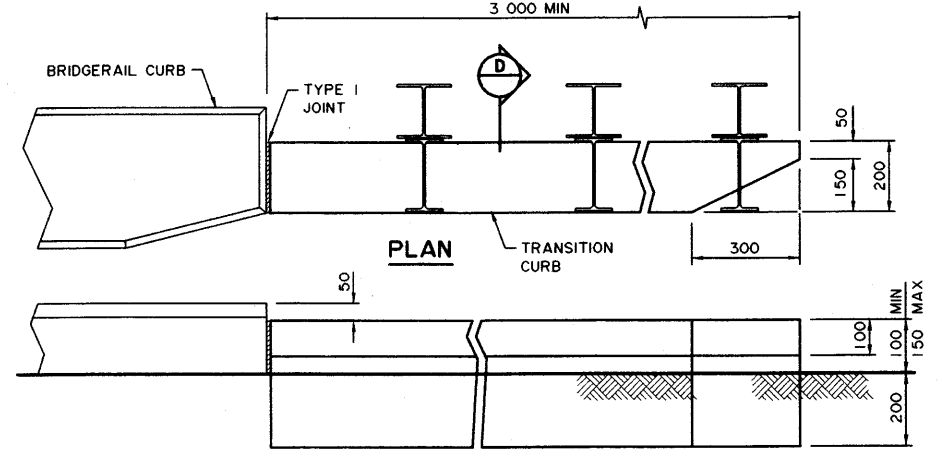
SECTION B

1:20



SECTION C

1:20



TRANSITION CURB DETAIL

1:10

• WORK THESE DRAWINGS TOGETHER: S-1648-00 AND S-1649-00

0705-103-00-03 / S-1649-00.DGN

<p>UMA UMA Engineering Ltd. Engineers, Planners & Surveyors</p>	<p>PERMIT TO PRACTICE UMA ENGINEERING LTD. Signature: <i>[Signature]</i> Date: <i>Nov 21, 2000</i> PERMIT NUMBER: P329 The Association of Professional Engineers, Geologists and Geophysicists of Alberta</p>	<p>DESIGNER PROFESSIONAL ENGINEER ALBERTA BOB JOHN RAY DATE: <i>Nov 21, 2000</i></p>	<p>CHECKER PROFESSIONAL ENGINEER ALBERTA DAVE B. SEYMOUR DATE: <i>Nov 21, 2000</i></p>	<table border="1"> <tr><th>REV</th><th>DATE</th><th>REVISIONS</th><th>BY</th></tr> <tr><td> </td><td> </td><td> </td><td> </td></tr> <tr><td> </td><td> </td><td> </td><td> </td></tr> <tr><td> </td><td> </td><td> </td><td> </td></tr> </table>	REV	DATE	REVISIONS	BY													<p>RECOMMENDED DIRECTOR BRIDGE ENGINEERING <i>[Signature]</i> APPROVED EXECUTIVE DIRECTOR TECHNICAL STANDARDS BRANCH <i>[Signature]</i> DATE: <i>22 Nov 00</i></p>	<p>Albera INFRASTRUCTURE</p> <p>PL-2 THRIE BEAM ON CURB BRIDGERAIL APPROACH RAIL TRANSITION DETAILS</p>	<table border="1"> <tr><th>DATE</th><th>SHEET</th><th>DRAWING</th></tr> <tr><td>2000-06-21</td><td>2 of 2</td><td>S-1649-00</td></tr> </table>	DATE	SHEET	DRAWING	2000-06-21	2 of 2	S-1649-00
					REV	DATE	REVISIONS	BY																					
DATE	SHEET	DRAWING																											
2000-06-21	2 of 2	S-1649-00																											
<p>F500733</p>																													