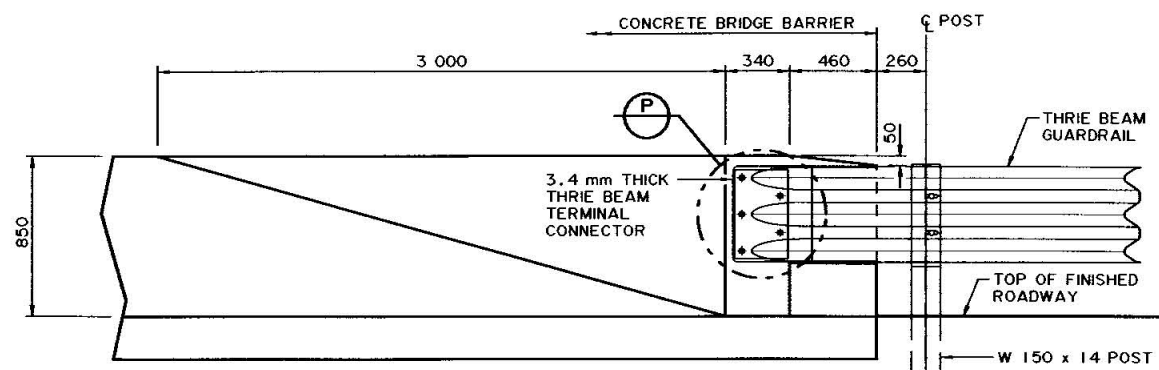
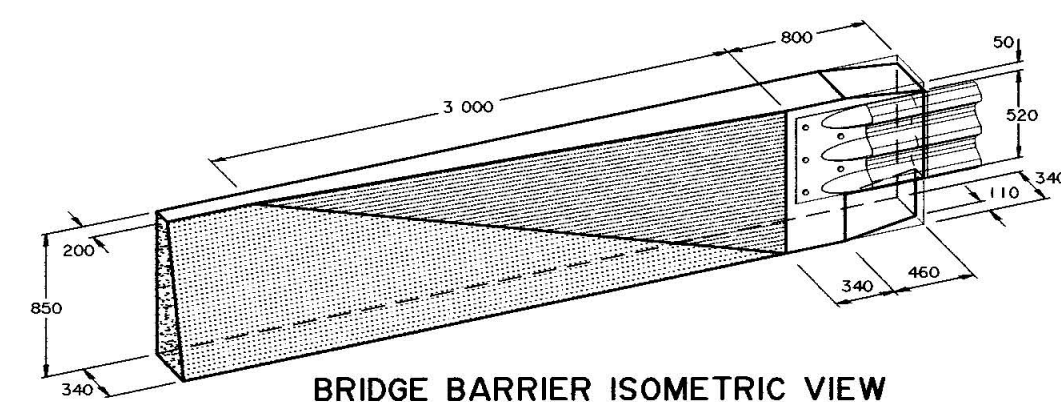


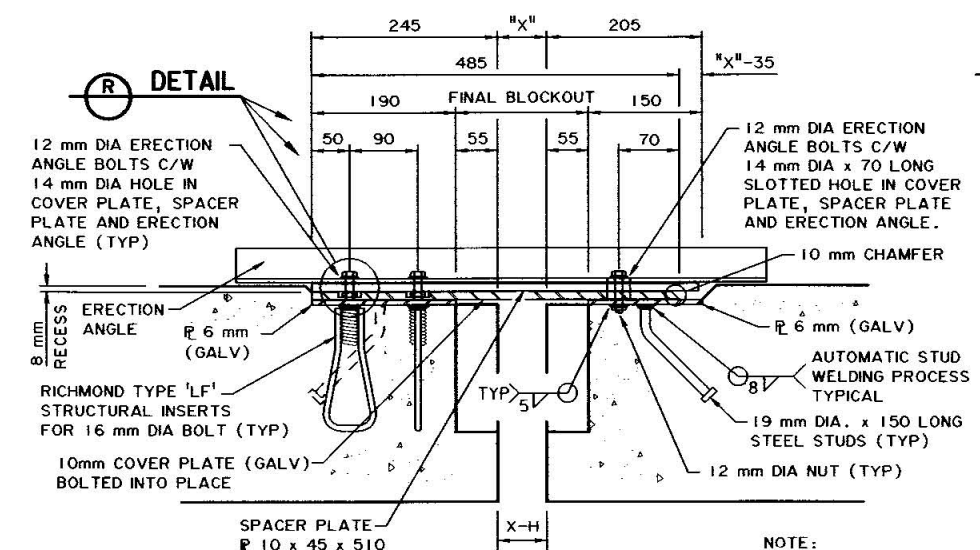
BRIDGE BARRIER PLAN
1:20



BRIDGE BARRIER ELEVATION
1:20

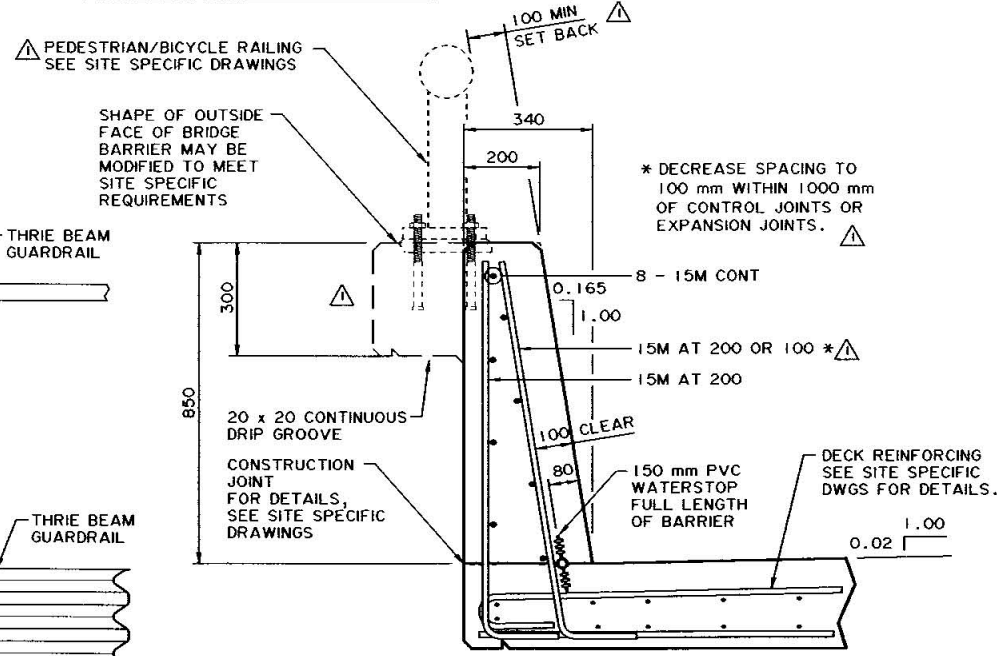


BRIDGE BARRIER ISOMETRIC VIEW

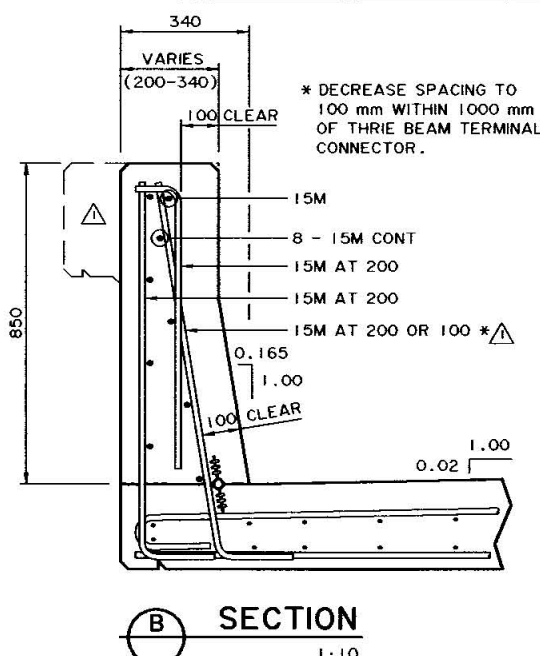


SECTION F
1:5

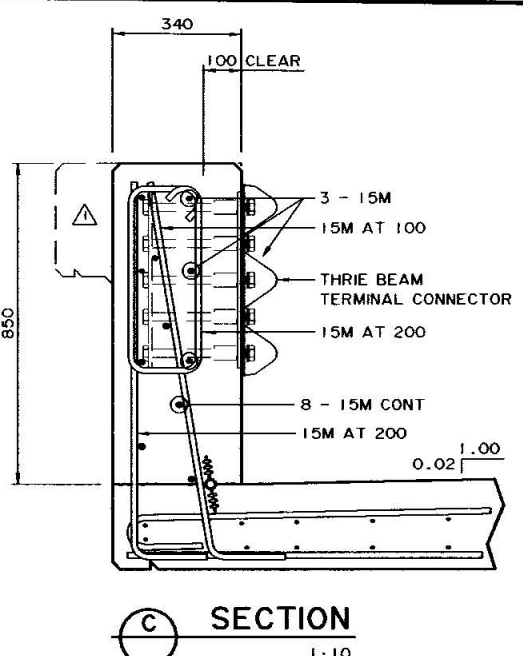
NOTE: FOR 'x' AND 'h' VALUES, SEE SITE SPECIFIC DWGS.



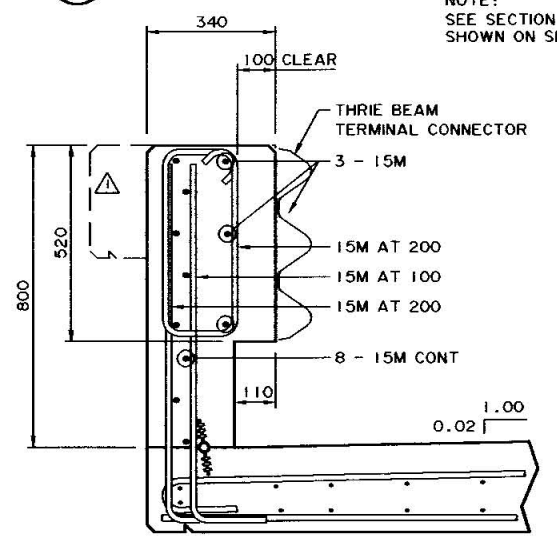
TYPICAL BRIDGE BARRIER SECTION A
1:10



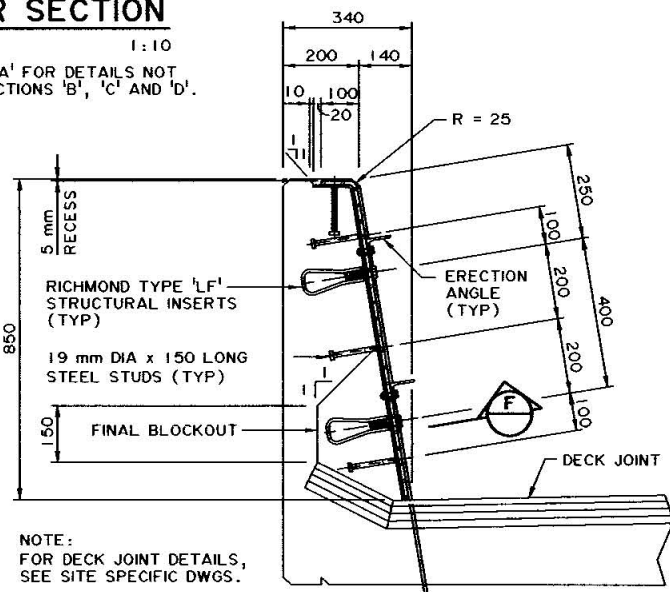
SECTION B
1:10



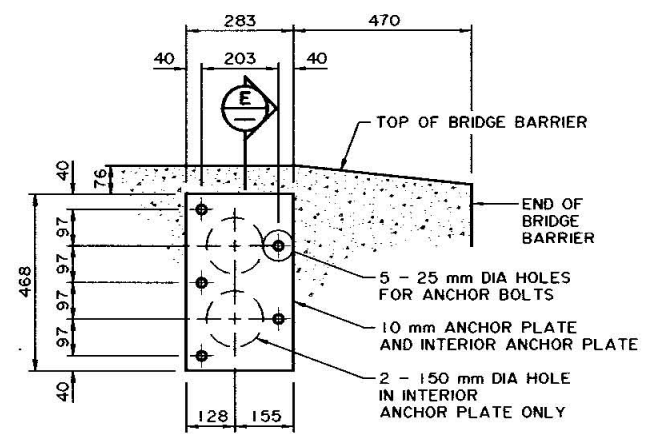
SECTION C
1:10



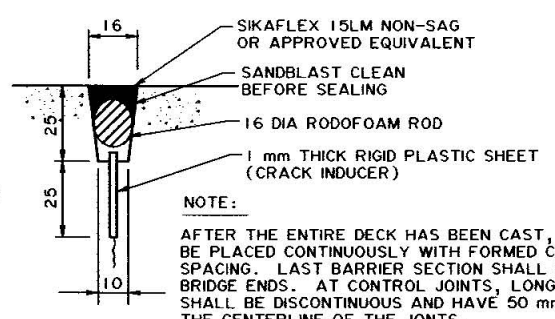
SECTION D
1:10



TYPICAL BRIDGE BARRIER SECTION AT DECK JOINT
1:10

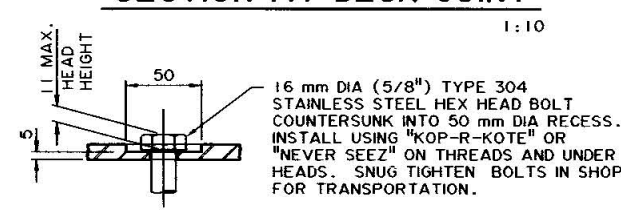


APPROACH RAIL TRANSITION ANCHORAGE DETAIL P
1:10

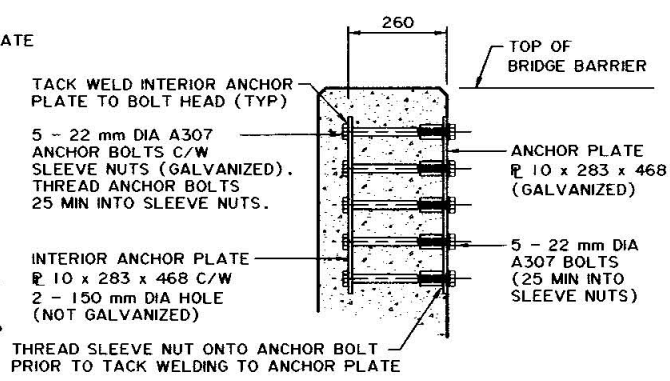


CONTROL JOINT DETAIL
NTS

NOTE: AFTER THE ENTIRE DECK HAS BEEN CAST, THE CONCRETE BARRIER SHALL BE PLACED CONTINUOUSLY WITH FORMED CONTROL JOINTS AT 3000 mm SPACING. LAST BARRIER SECTION SHALL BE LONGER THAN 3000 mm AT BRIDGE ENDS. AT CONTROL JOINTS, LONGITUDINAL REINFORCEMENT SHALL BE DISCONTINUOUS AND HAVE 50 mm CONCRETE COVER FROM THE CENTERLINE OF THE JOINTS.



DETAIL R
N.T.S.



SECTION E
1:10

SUPERSEDED BY S-1650-00 REVISION 2, 2007-02-14

WORK THESE DRAWINGS TOGETHER: S-1650-00 AND S-1651-00

| | | | | | | | | | | | | |
|---|---|---|--|--|--|---|---|---|--------------------|----------------------------|-------------------------|------------------------------|
| <p>UMA Engineering Ltd. Engineers, Planners & Surveyors</p> | <p>PERMIT TO PRACTICE UMA ENGINEERING LTD. PERMIT NUMBER: P 5778 ORIGINAL SIGNED AND STAMPED BY: ART WASHUTA ON: NOVEMBER 21, 2000 The Association of Professional Engineers, Geologists and Geophysicists of Alberta</p> | <p>DESIGNER R. J. RAMSAY ON: NOV 21, 2000</p> | <p>CHECKER D. B. SERINK ON: NOV 21, 2000</p> | <p>2004-03-01 OPTIONAL BARRIER SHAPE MODIFIED & OPTIONAL PEDESTRIAN RAIL ADDED</p> | <p>RECOMMENDED DIRECTOR BRIDGE ENGINEERING</p> | <p>ORIGINAL SIGNED BY REG QUINTON</p> | <p>APPROVED EXECUTIVE DIRECTOR TECHNICAL STANDARDS BRANCH</p> | <p>ORIGINAL SIGNED BY TIM HAWNT</p> | <p>AL BAR CODE</p> | <p>DATE 2000-06-21</p> | <p>SHEET 1 of 2</p> | <p>DRAWING S-1650-00</p> |
| | | | | | <p>DATE</p> | | | | | | | |