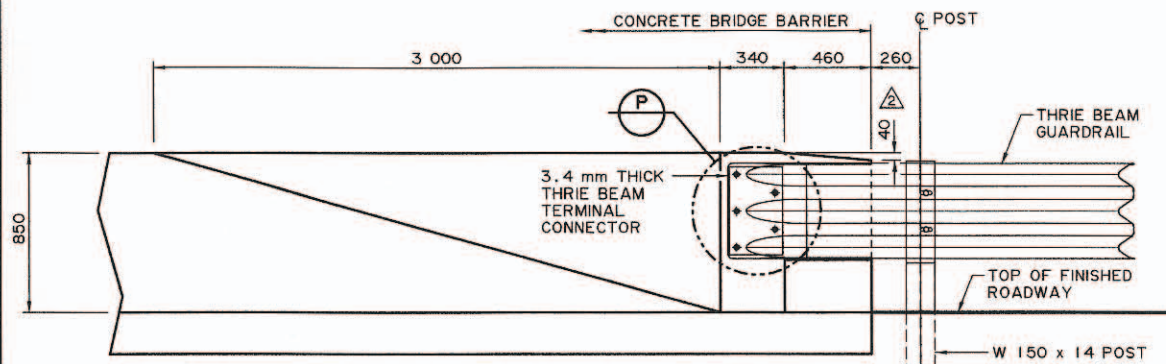
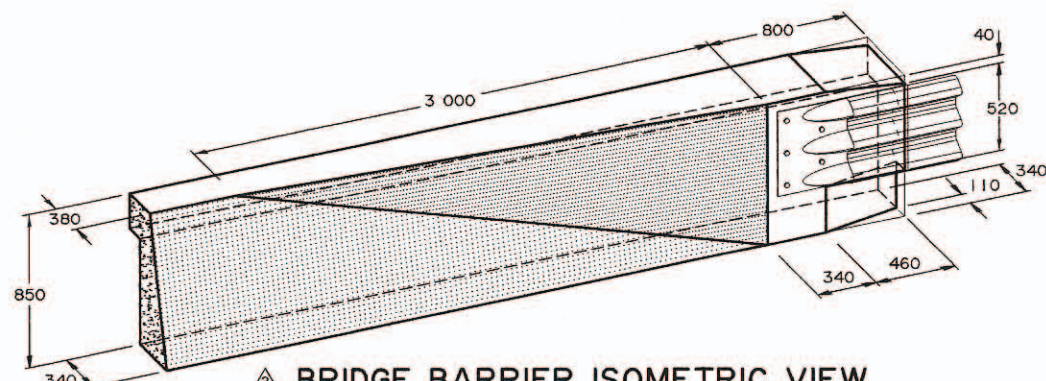


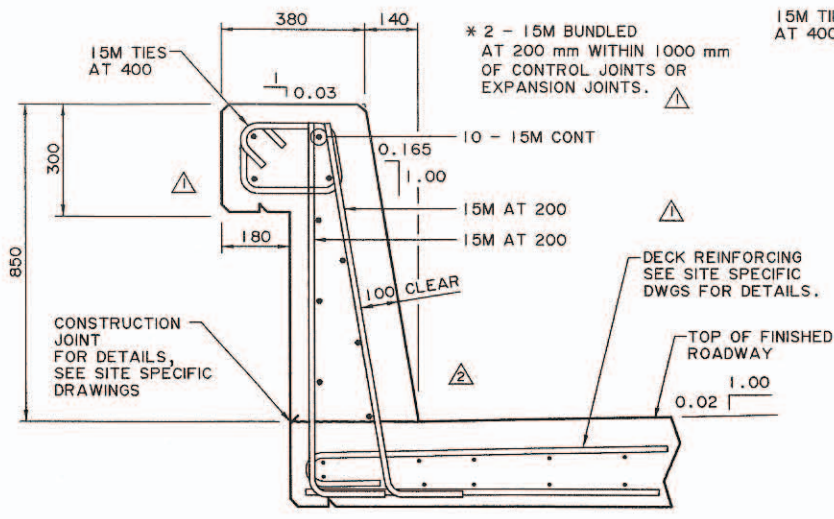
BRIDGE BARRIER PLAN
1:20



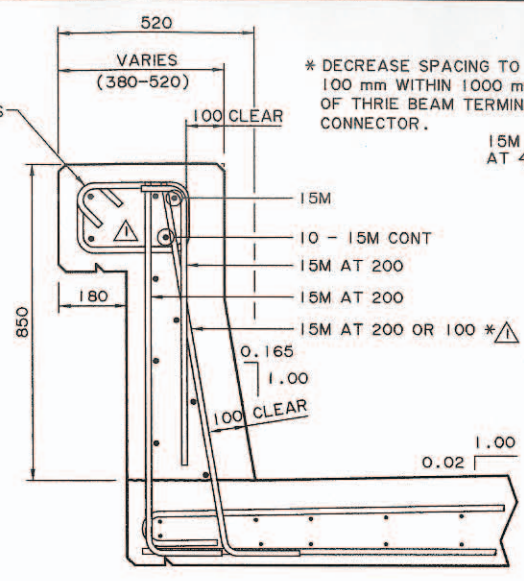
BRIDGE BARRIER ELEVATION
1:20



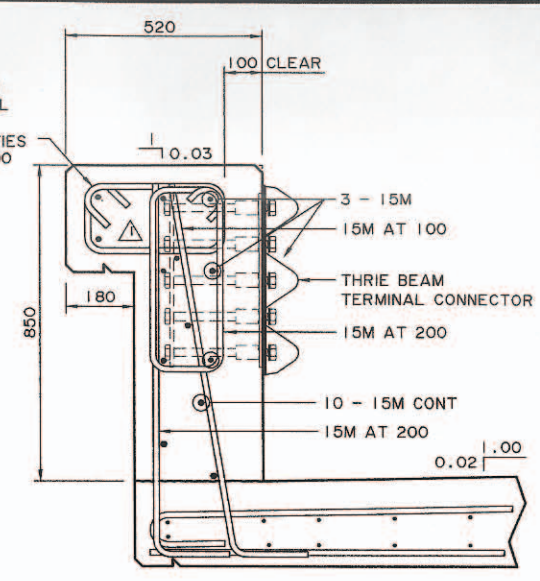
BRIDGE BARRIER ISOMETRIC VIEW
1:20



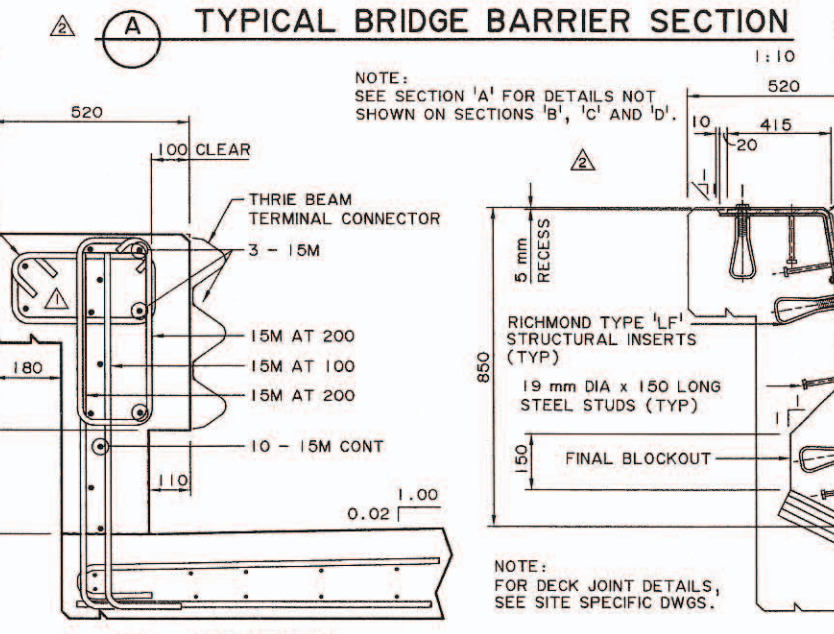
TYPICAL BRIDGE BARRIER SECTION A
1:10



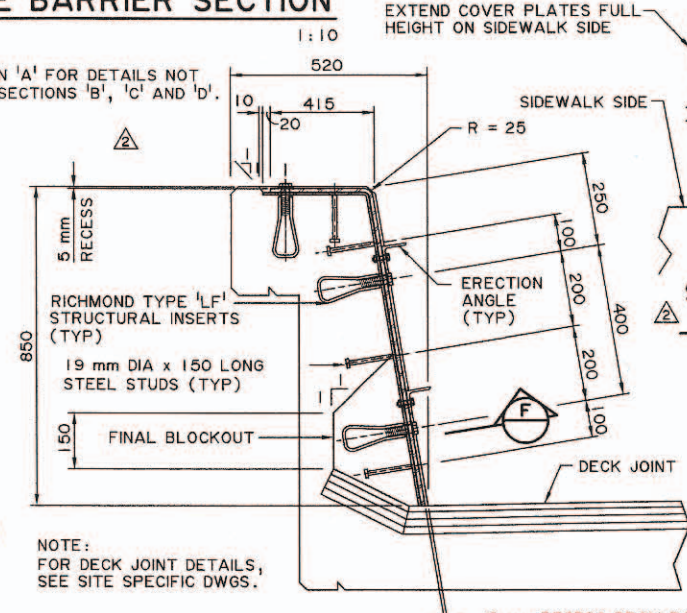
SECTION B
1:10



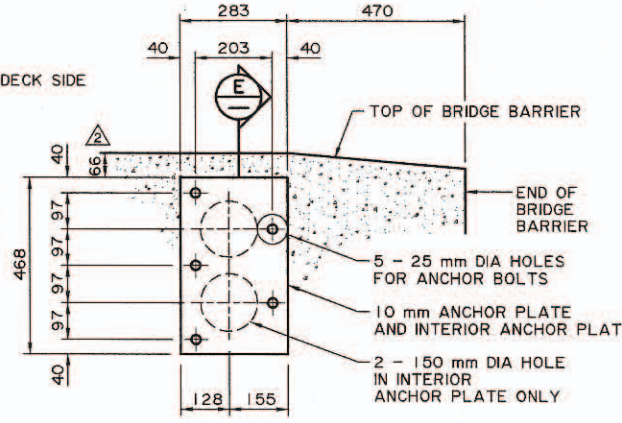
SECTION C
1:10



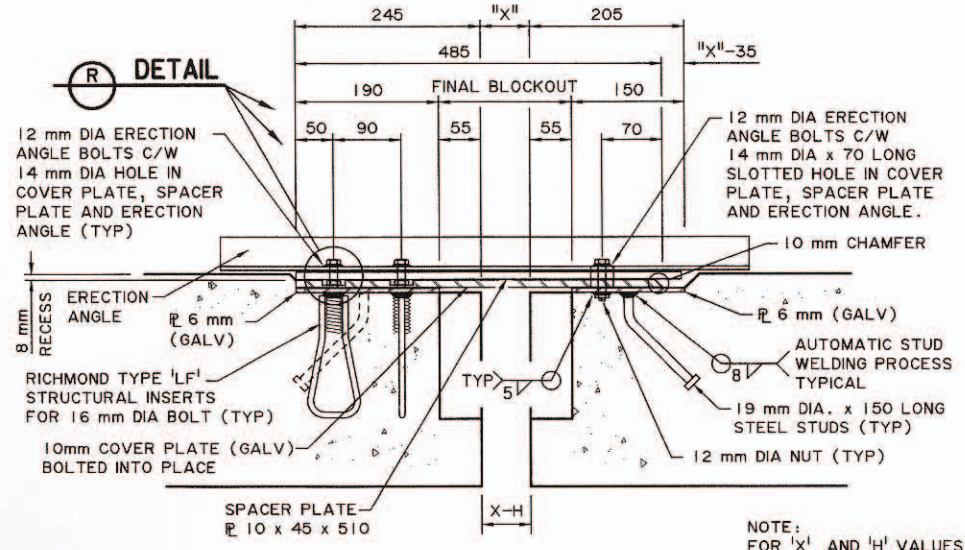
SECTION D
1:10



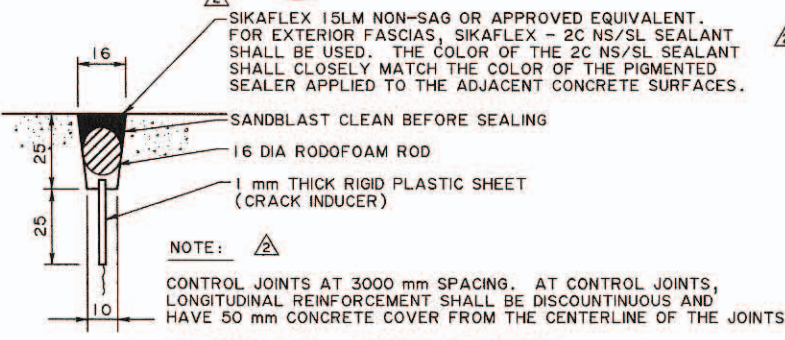
TYPICAL BRIDGE BARRIER SECTION AT DECK JOINT
1:10



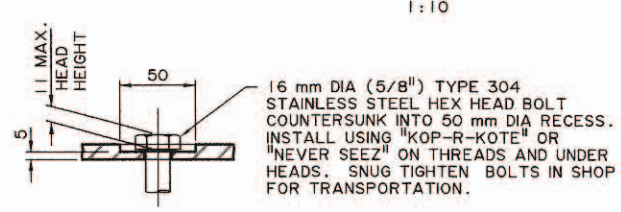
APPROACH RAIL TRANSITION ANCHORAGE DETAIL
1:10



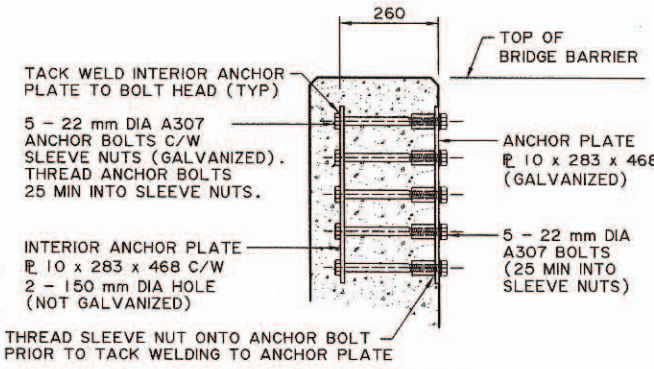
SECTION F
1:5



CONTROL JOINT DETAIL
NTS



DETAIL R
N.T.S.



SECTION E
1:10

SUPERSEDED BY S-1650-00, REVISION 3

• WORK THESE DRAWINGS TOGETHER: S-1650-00 AND S-1651-00

0705-103-00-3 / S-1650-00.rvt

<p>UMA Engineering Ltd. Engineers, Planners & Surveyors</p>	<p>PERMIT TO PRACTICE UMA ENGINEERING LTD. PERMIT NUMBER: P 5778 ORIGINAL SIGNED AND STAMPED By: ART WASHUTA ON: NOVEMBER 21, 2000 The Association of Professional Engineers, Geologists and Geophysicists of Alberta</p>	<p>DESIGNER ORIGINAL STAMPED AND SIGNED By: R. J. RAMSAY ON: NOV 21, 2000</p>	<p>CHECKER ORIGINAL STAMPED AND SIGNED By: D. B. SERINK ON: NOV 21, 2000</p>	<p>RECOMMENDED DIRECTOR BRIDGE ENGINEERING</p>	<p>ORIGINAL SIGNED BY REG QUINTON</p>	<p>Albera INFRASTRUCTURE</p> <p>PL-2 SINGLE SLOPE CONCRETE BRIDGE BARRIER BARRIER DETAILS</p>
	<p>DATE</p>	<p>DATE</p>	<p>APPROVED EXECUTIVE DIRECTOR TECHNICAL STANDARDS BRANCH</p>	<p>ORIGINAL SIGNED BY TIM HAWNT</p>	<p>DATE NOV 22, 2000</p>	
<p>REV</p>	<p>DATE</p>	<p>REVISIONS</p>	<p>BY</p>	<p>DATE</p>	<p>SHEET 1 of 2</p>	<p>DRAWING S-1650-00</p>