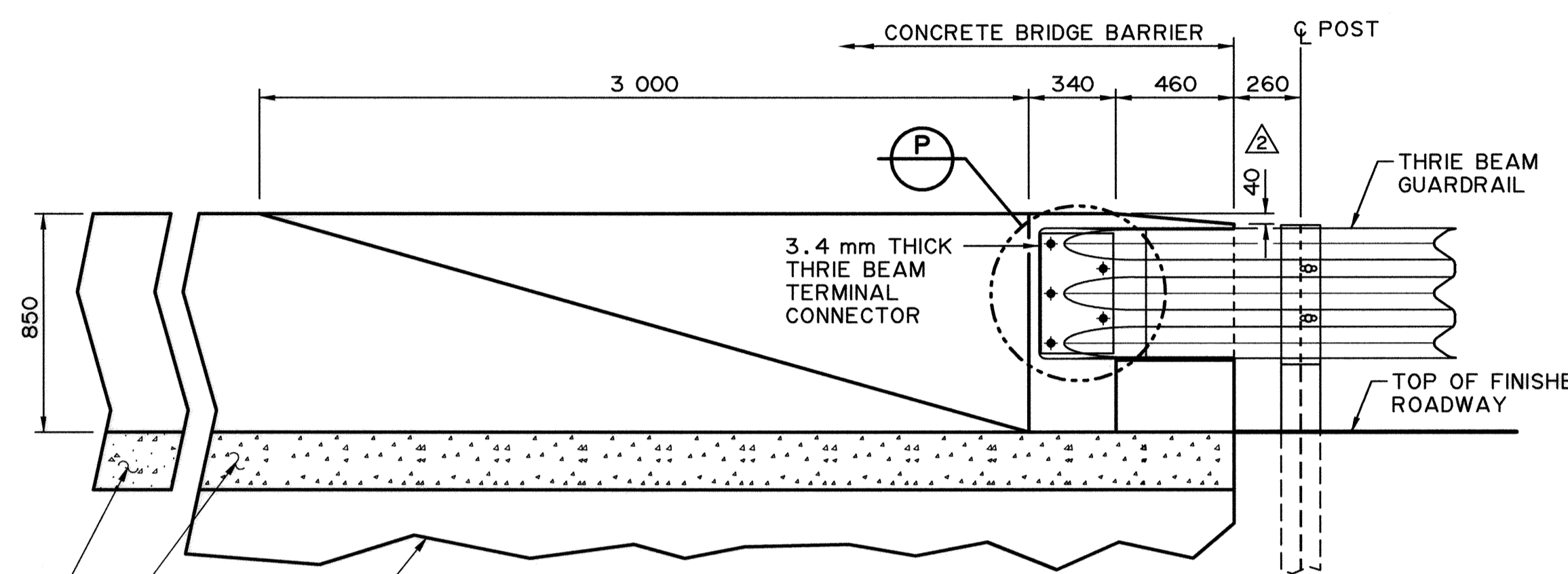
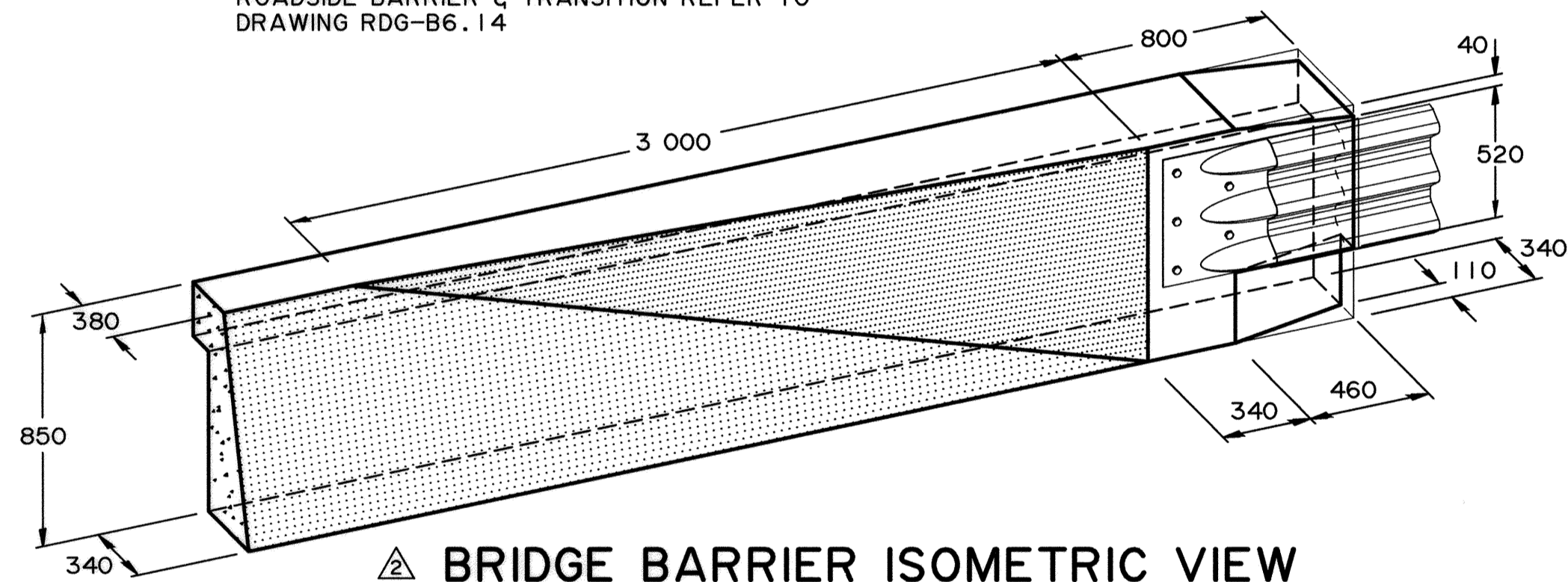


BRIDGE BARRIER END PLAN
1:20

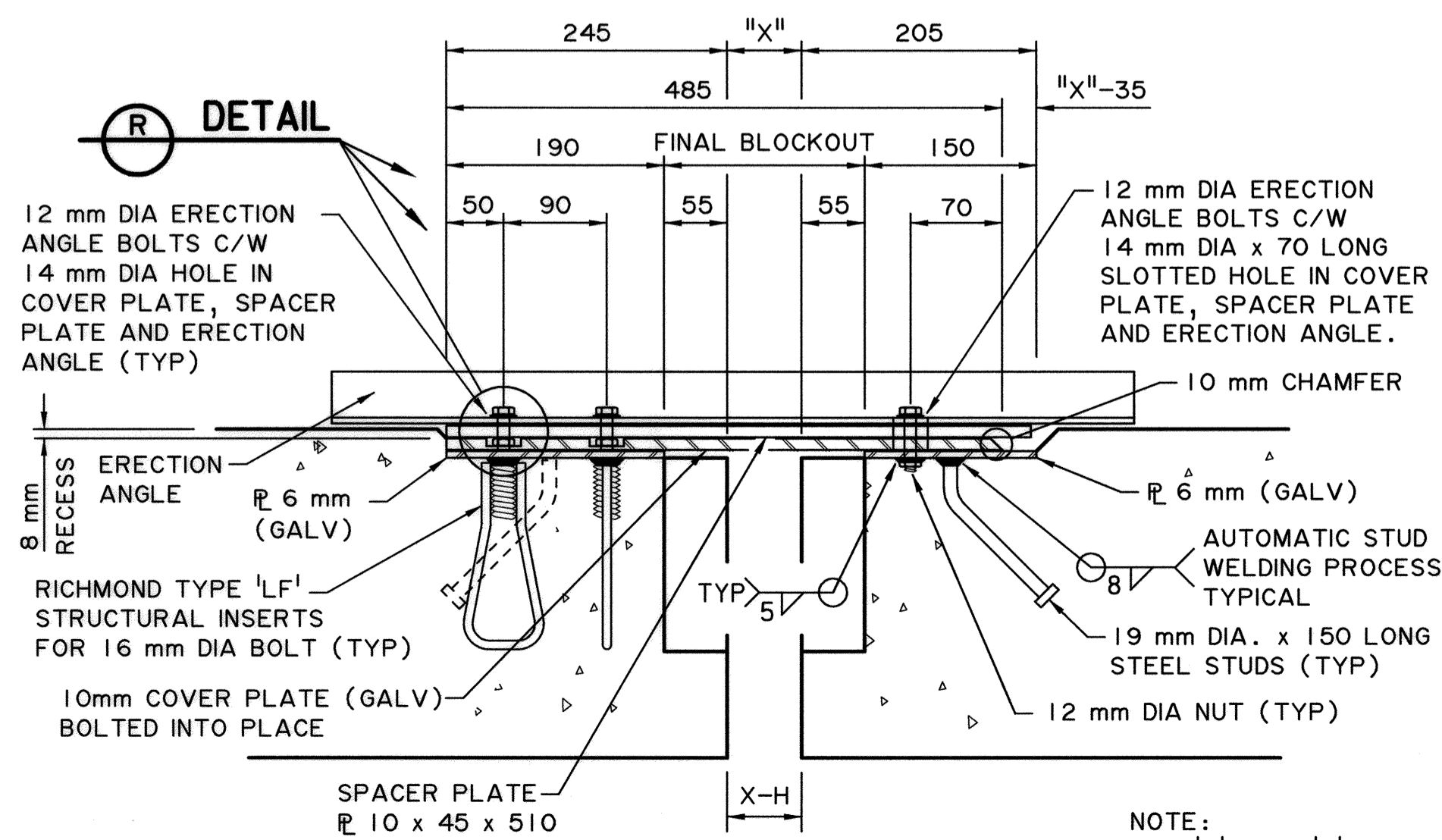


BRIDGE BARRIER END ELEVATION
1:20

FOR CONNECTION TO SINGLE SLOPE CONCRETE ROADSIDE BARRIER & TRANSITION REFER TO DRAWING RDG-B6.14

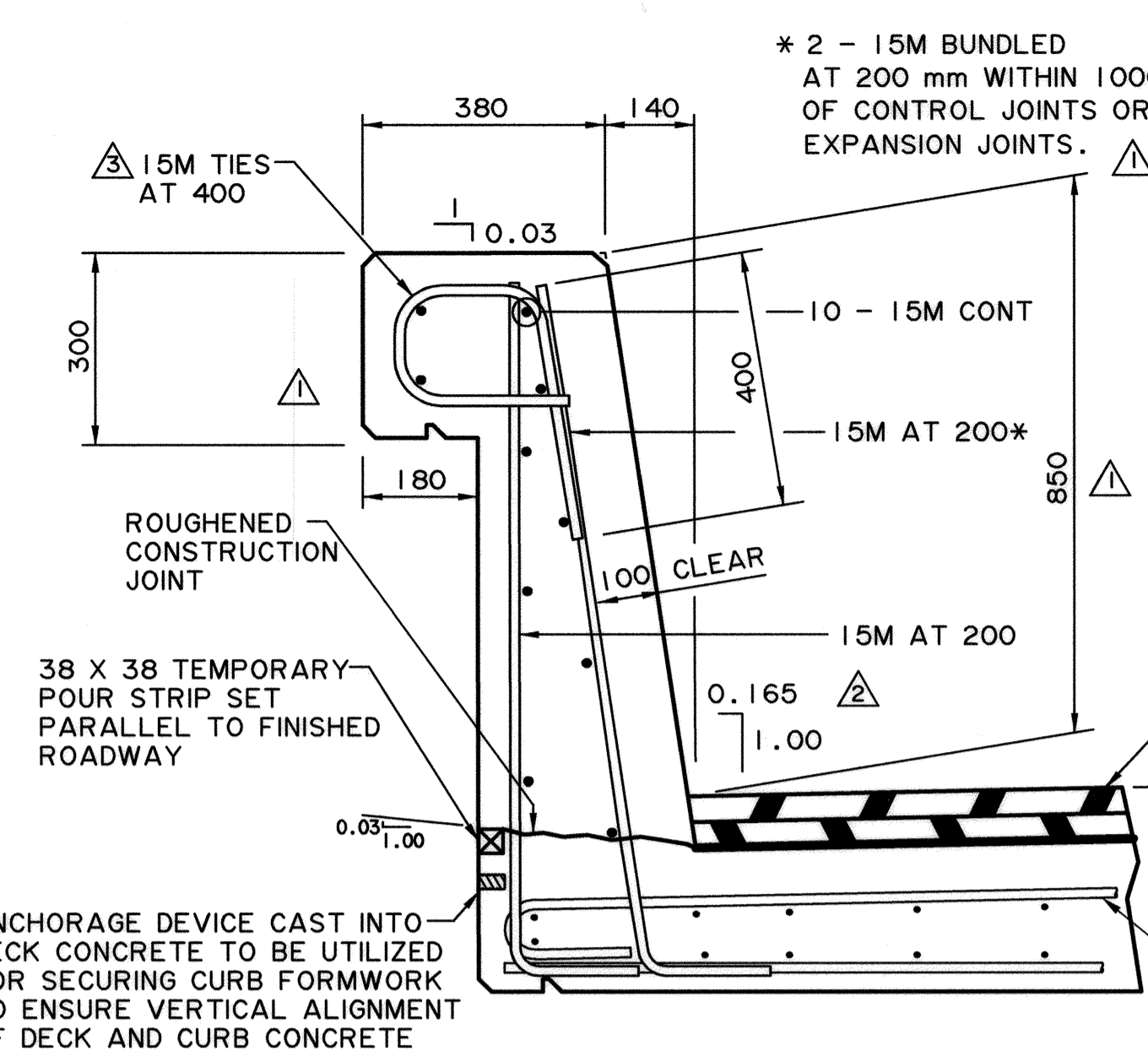


BRIDGE BARRIER ISOMETRIC VIEW

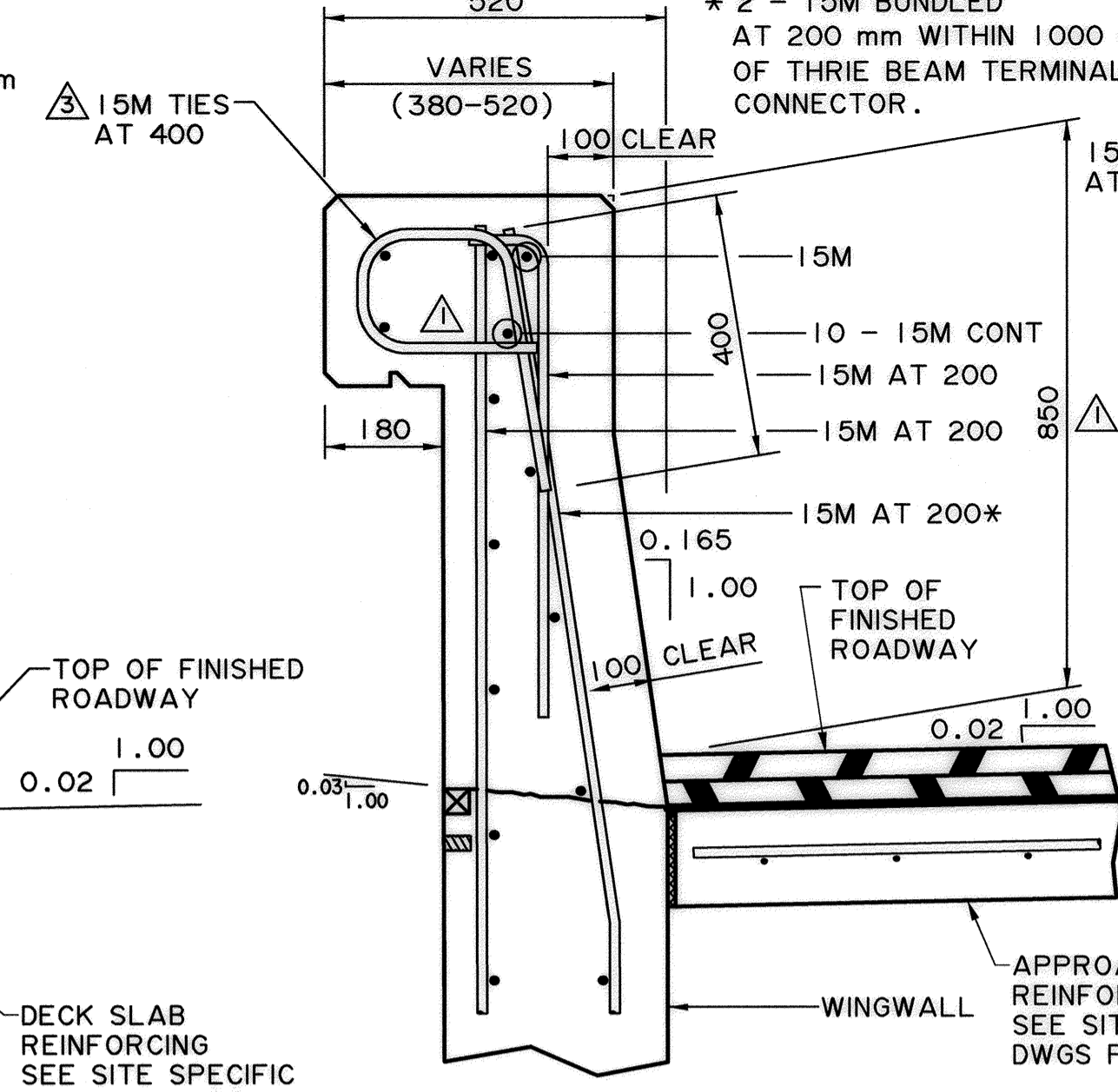


SECTION F
1:5

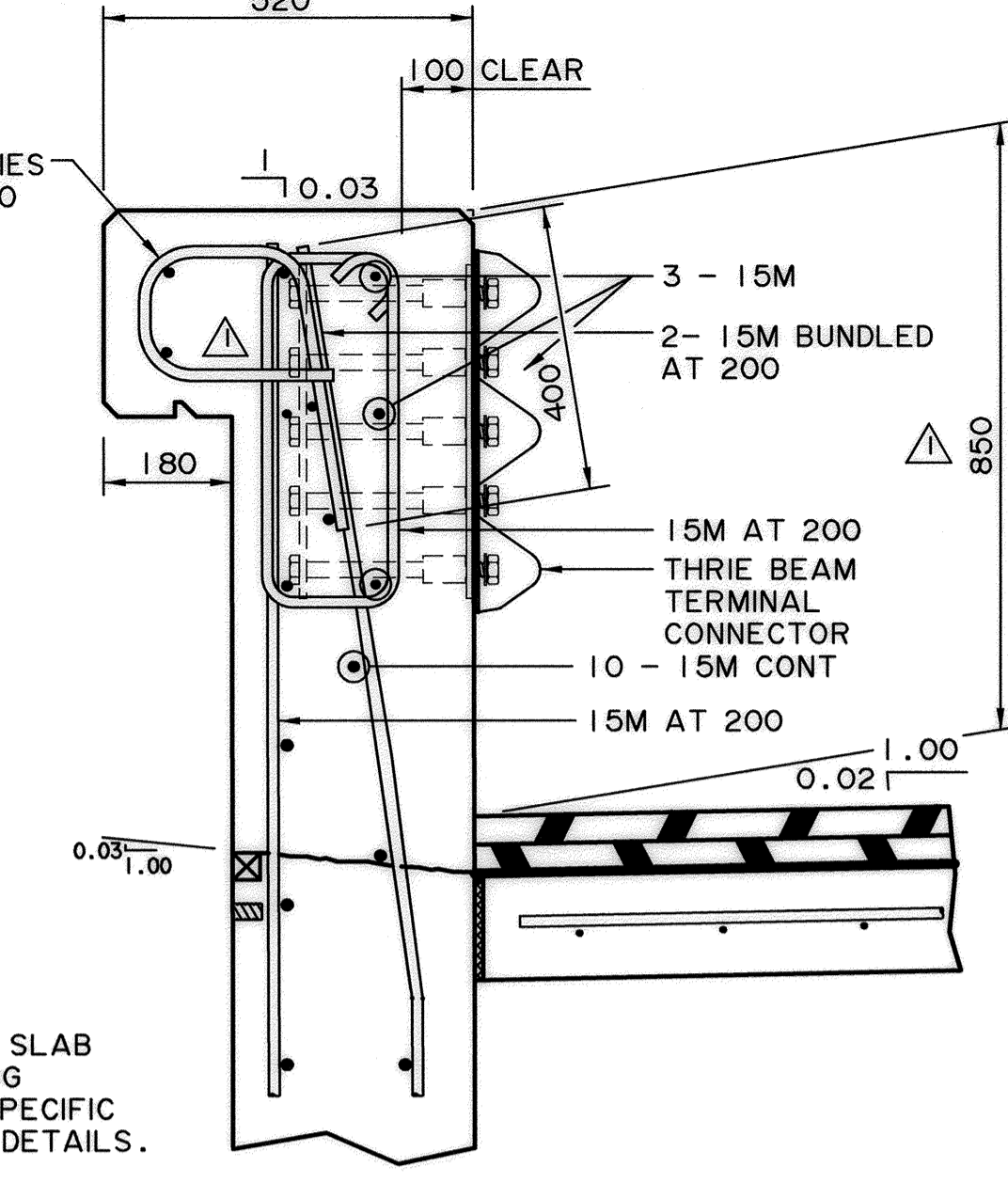
NOTE: FOR 'X' AND 'H' VALUES, SEE SITE SPECIFIC DWGS.



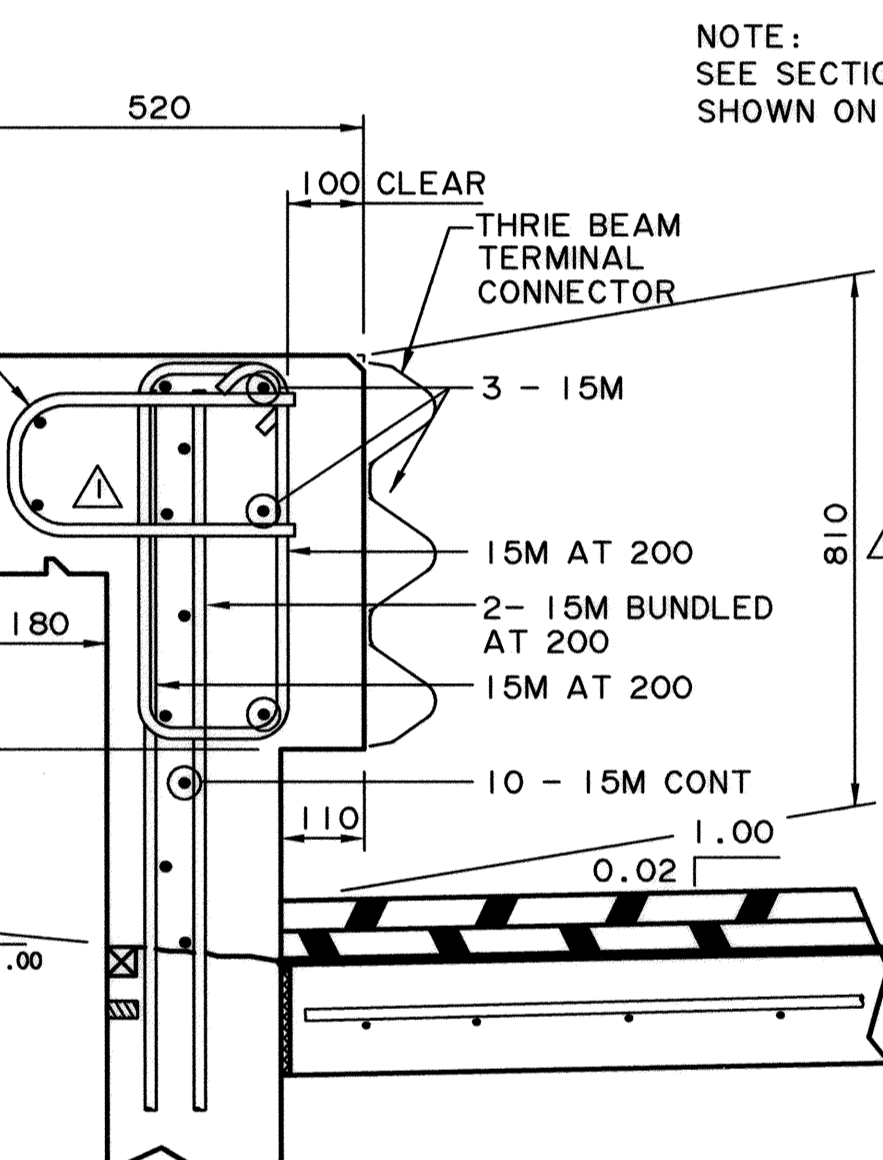
TYPICAL BRIDGE BARRIER SECTION A
1:10



SECTION B
1:10

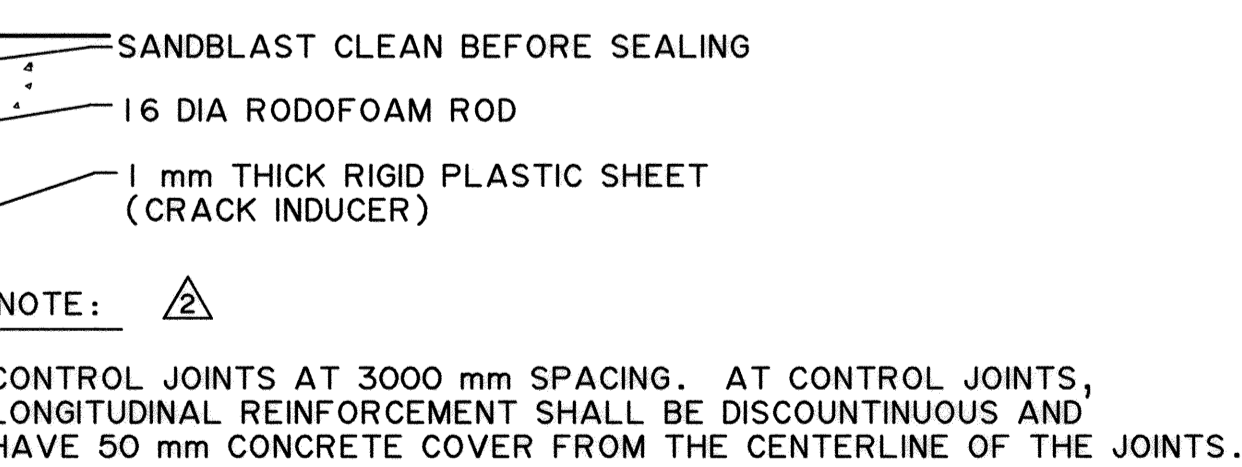


SECTION C
1:10



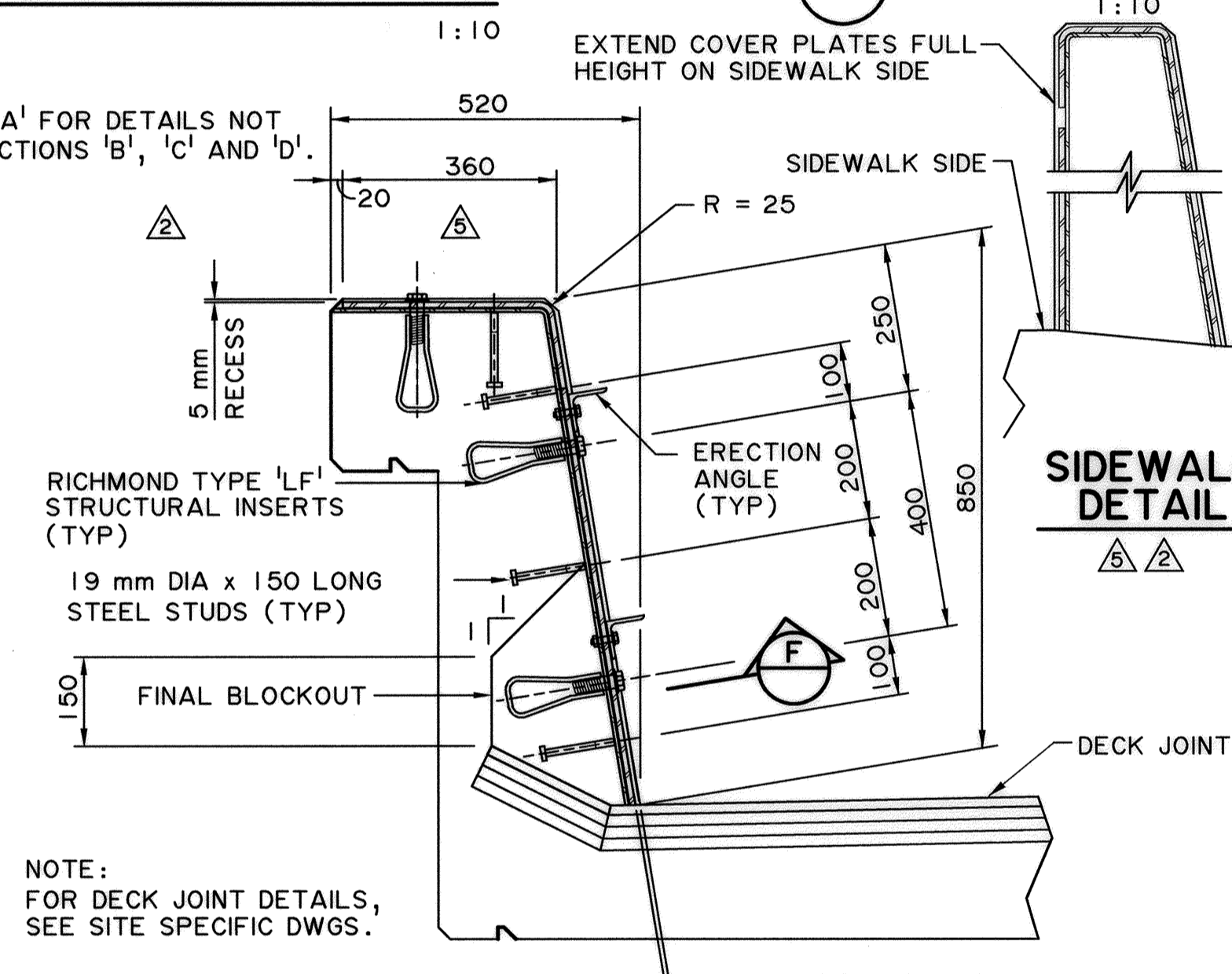
SECTION D
1:10

NOTE: SEE SECTION 'A' FOR DETAILS NOT SHOWN ON SECTIONS 'B', 'C' AND 'D'.



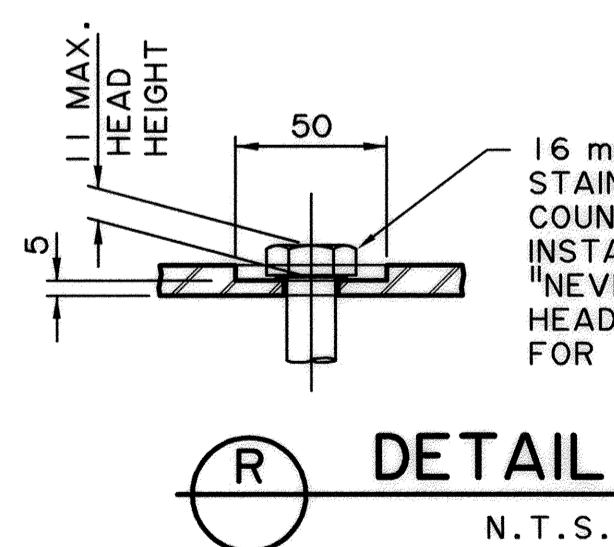
CONTROL JOINT DETAIL
NTS

NOTE: CONTROL JOINTS AT 3000 mm SPACING. AT CONTROL JOINTS, LONGITUDINAL REINFORCEMENT SHALL BE DISCONTINUOUS AND HAVE 50 mm CONCRETE COVER FROM THE CENTERLINE OF THE JOINTS.

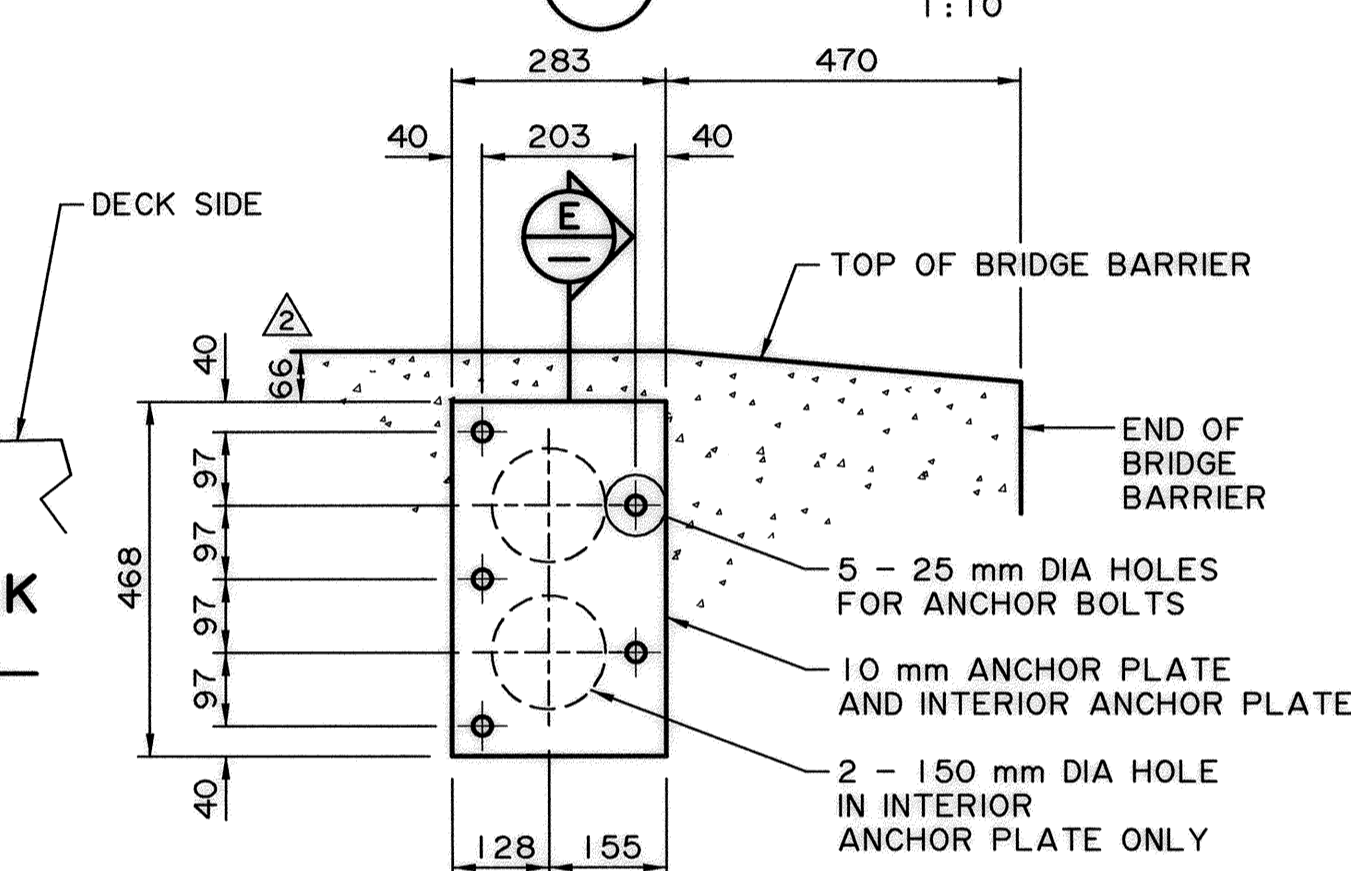


TYPICAL BRIDGE BARRIER SECTION AT DECK JOINT
1:10

NOTE: FOR DECK JOINT DETAILS, SEE SITE SPECIFIC DWGS.

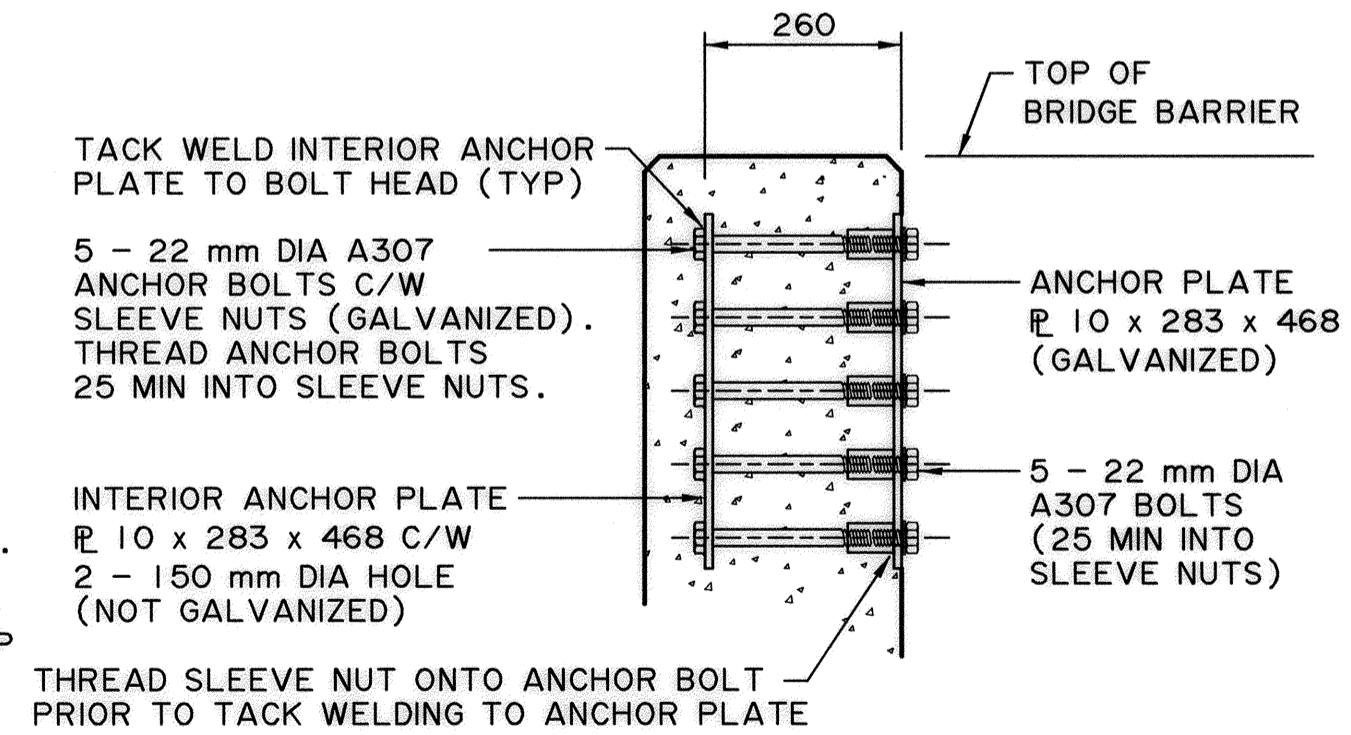


DETAIL R
N.T.S.



APPROACH RAIL TRANSITION ANCHORAGE DETAIL
1:10

NOTE: (THRIE BEAM TERMINAL CONNECTOR NOT SHOWN FOR CLARITY.)



SECTION E
1:10

WORK THESE DRAWINGS TOGETHER: S-1650-00 AND S-1651-00

<p>UMA Engineering Ltd. Engineers, Planners & Surveyors</p>		<p>DESIGNER</p> <p>PERMIT TO PRACTICE UMA ENGINEERING LTD. PERMIT NUMBER: P 5778 ORIGINAL SIGNED AND STAMPED BY: ART WASHUTA ON: NOVEMBER 21, 2000 The Association of Professional Engineers, Geologists and Geophysicists of Alberta</p>	<p>CHECKER</p> <p>PROFESSIONAL ENGINEER ALBERTA ORIGINAL STAMPED AND SIGNED BY: D. B. SERINK ON: NOV 21, 2000</p>	<table border="1"> <thead> <tr> <th>REV</th> <th>DATE</th> <th>REVISIONS</th> <th>BY</th> </tr> </thead> <tbody> <tr> <td>1</td> <td>2009-10-01</td> <td>WINGWALL ADDED TO BRIDGE BARRIER SECTIONS. BARRIER REINFORCING REVISED</td> <td>CM</td> </tr> <tr> <td>2</td> <td>2008-09-18</td> <td>BRIDGE BARRIER END PLAN & ELEVATION, CONSTRUCTION JOINT</td> <td>RY</td> </tr> <tr> <td>3</td> <td>2007-07-30</td> <td>15M TIE BAR SHAPE</td> <td>RY</td> </tr> <tr> <td>4</td> <td>2007-02-14</td> <td>CONTROL JOINT DETAIL, THRIE BEAM GUARDRAIL HEIGHT, COVER PLATE, WATERSTOP REMOVED</td> <td>RY</td> </tr> <tr> <td>5</td> <td>2004-03-01</td> <td>OPTIONAL BARRIER SHAPE MODIFIED & OPTIONAL PEDESTRIAN RAIL ADDED</td> <td>RY</td> </tr> </tbody> </table>	REV	DATE	REVISIONS	BY	1	2009-10-01	WINGWALL ADDED TO BRIDGE BARRIER SECTIONS. BARRIER REINFORCING REVISED	CM	2	2008-09-18	BRIDGE BARRIER END PLAN & ELEVATION, CONSTRUCTION JOINT	RY	3	2007-07-30	15M TIE BAR SHAPE	RY	4	2007-02-14	CONTROL JOINT DETAIL, THRIE BEAM GUARDRAIL HEIGHT, COVER PLATE, WATERSTOP REMOVED	RY	5	2004-03-01	OPTIONAL BARRIER SHAPE MODIFIED & OPTIONAL PEDESTRIAN RAIL ADDED	RY	<p>RECOMMENDED DIRECTOR BRIDGE ENGINEERING</p> <p>ORIGINAL SIGNED BY REG QUINTON</p> <p>APPROVED EXECUTIVE DIRECTOR TECHNICAL STANDARDS BRANCH</p> <p>ORIGINAL SIGNED BY TIM HAWNT</p> <p>DATE NOV 22, 2000</p>	<p>Alberta INFRASTRUCTURE</p> <p>PL-2 SINGLE SLOPE CONCRETE BRIDGE BARRIER BARRIER DETAILS</p> <table border="1"> <thead> <tr> <th>AI BAR CODE</th> <th>DATE</th> <th>SHEET</th> <th>DRAWING</th> </tr> </thead> <tbody> <tr> <td></td> <td>2000-06-21</td> <td>1 of 2</td> <td>S-1650-00</td> </tr> </tbody> </table>	AI BAR CODE	DATE	SHEET	DRAWING		2000-06-21	1 of 2	S-1650-00
REV	DATE	REVISIONS	BY																																			
1	2009-10-01	WINGWALL ADDED TO BRIDGE BARRIER SECTIONS. BARRIER REINFORCING REVISED	CM																																			
2	2008-09-18	BRIDGE BARRIER END PLAN & ELEVATION, CONSTRUCTION JOINT	RY																																			
3	2007-07-30	15M TIE BAR SHAPE	RY																																			
4	2007-02-14	CONTROL JOINT DETAIL, THRIE BEAM GUARDRAIL HEIGHT, COVER PLATE, WATERSTOP REMOVED	RY																																			
5	2004-03-01	OPTIONAL BARRIER SHAPE MODIFIED & OPTIONAL PEDESTRIAN RAIL ADDED	RY																																			
AI BAR CODE	DATE	SHEET	DRAWING																																			
	2000-06-21	1 of 2	S-1650-00																																			