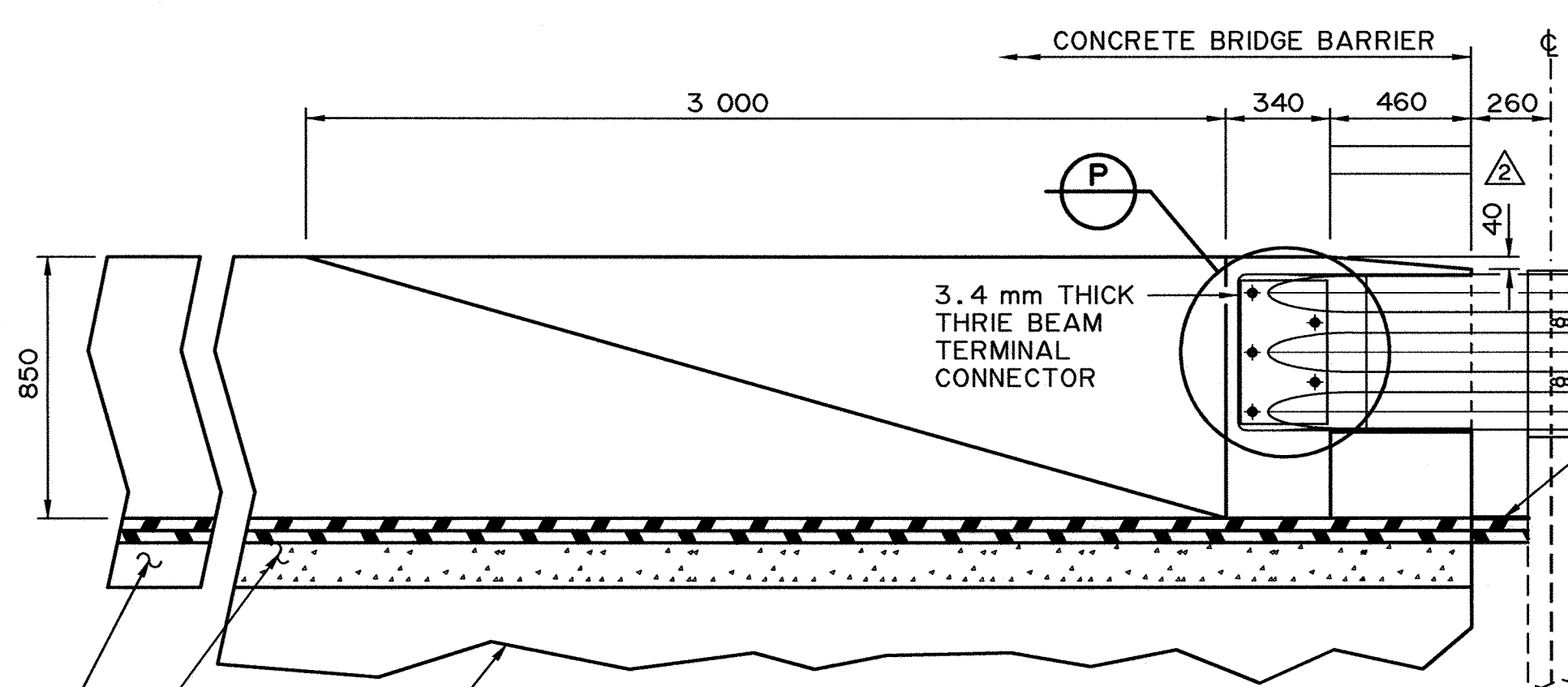
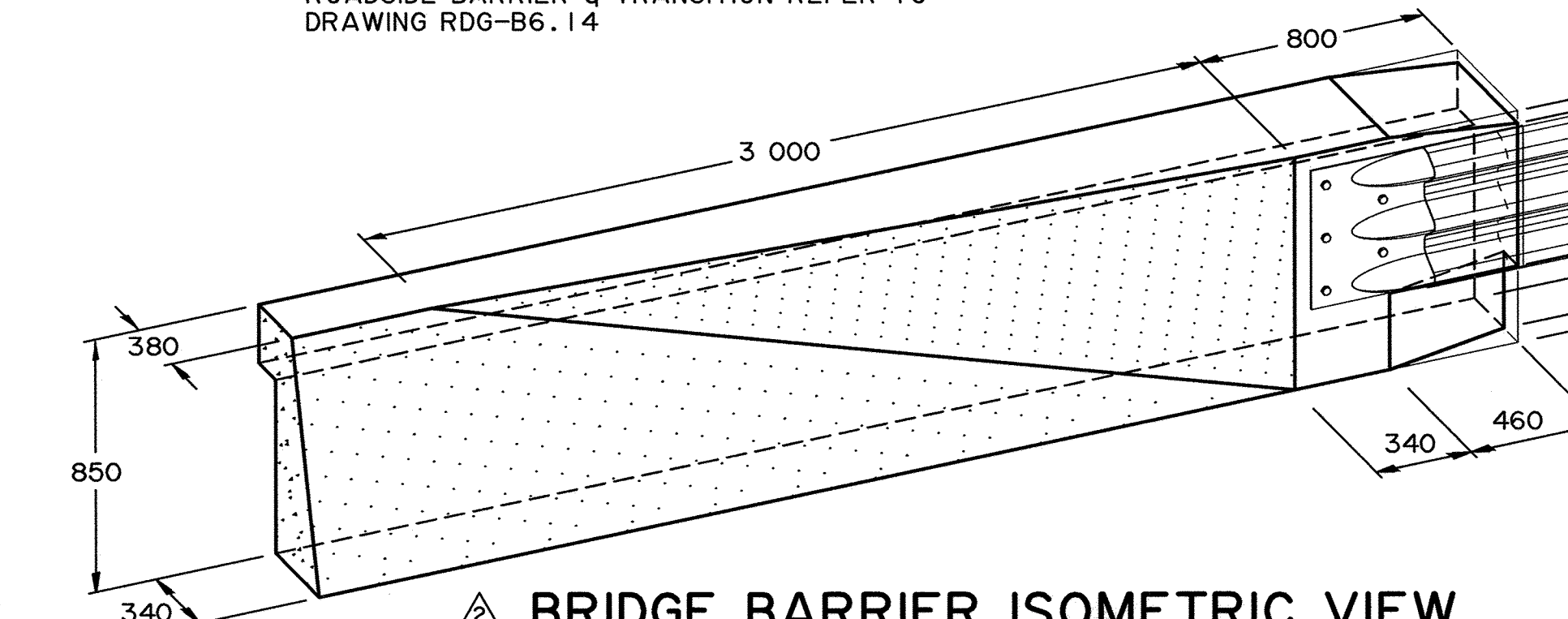


**BRIDGE BARRIER END PLAN**  
1:20



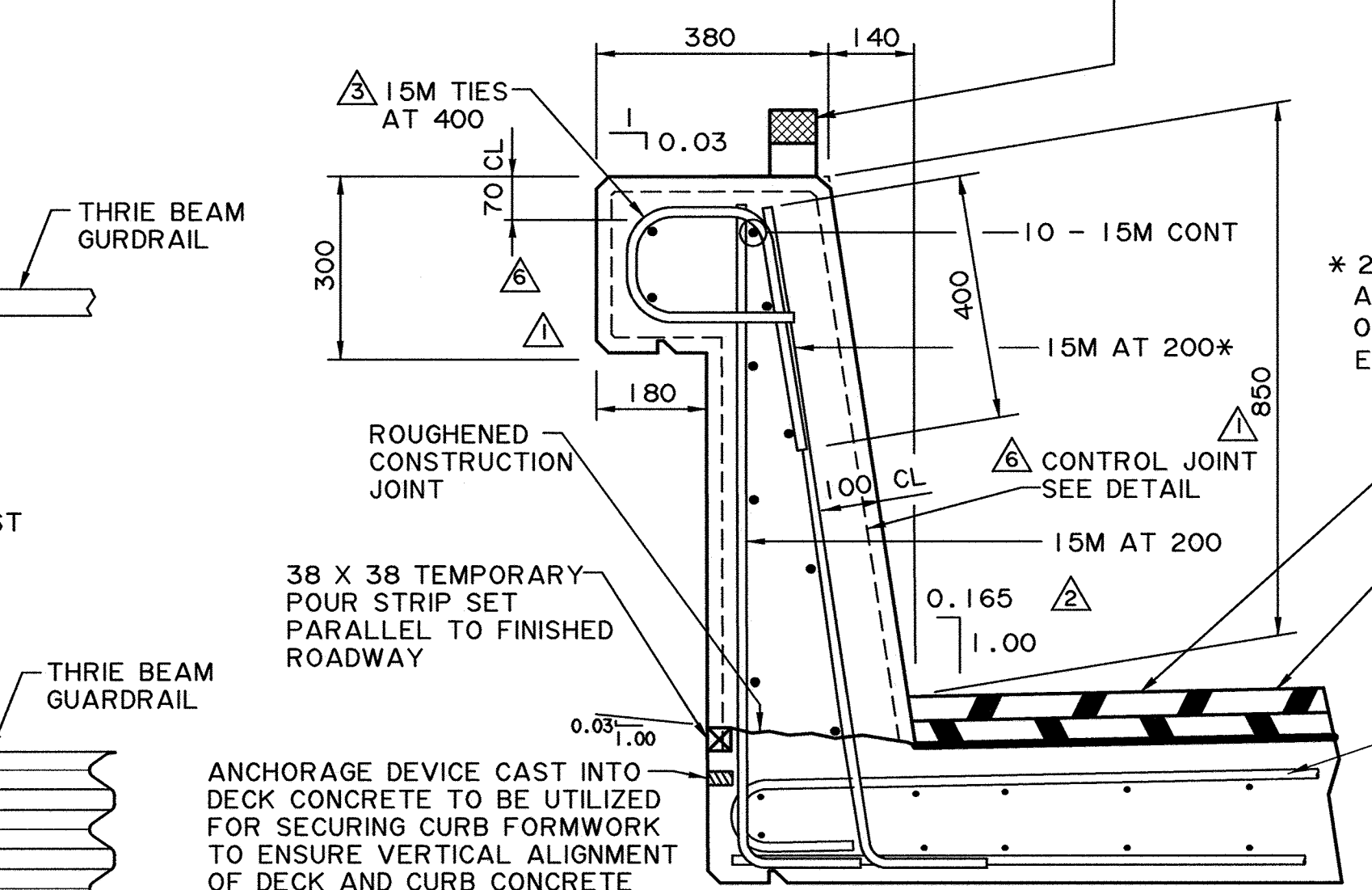
**BRIDGE BARRIER END ELEVATION**  
1:20

FOR CONNECTION TO SINGLE SLOPE CONCRETE ROADSIDE BARRIER & TRANSITION REFER TO DRAWING RDG-B6.14



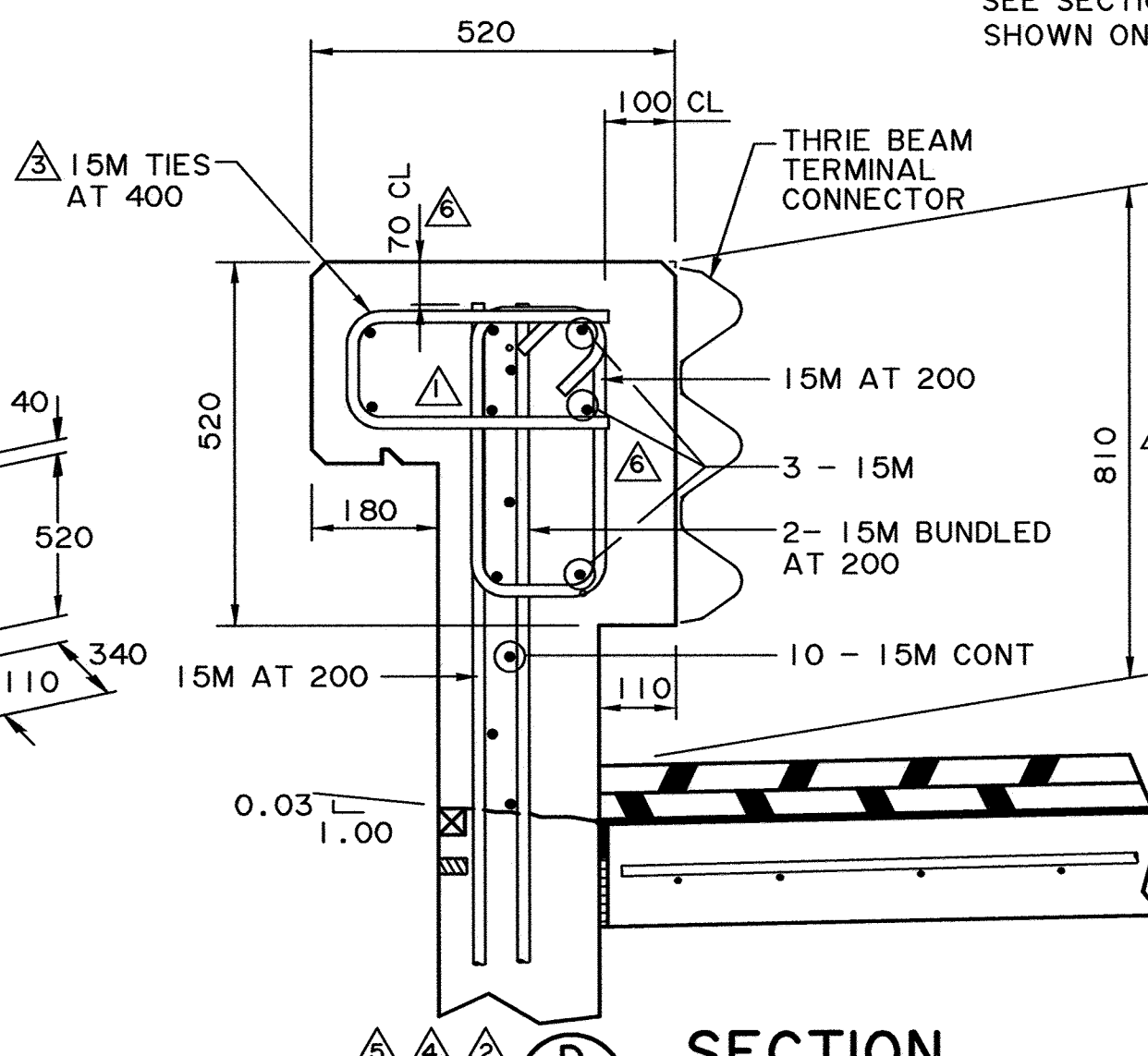
**BRIDGE BARRIER ISOMETRIC VIEW**

REFLECTOR COMPLETE WITH URETHANE HINGE AT 12 000 MAX SPACING. REFLECTOR IS DOUBLE SIDED SHEETING 108 mm x 76 mm (MIN) MEETING ASTM D4956 TYPE IX OR XI FOR LUMINANCE LEVEL. SHEETING COLOR TO BE FLOURESCENT YELLOW OR WHITE TO MATCH PAVEMENT EDGE LINE. ALIGN WITH BARRIER TRAFFIC FACE.



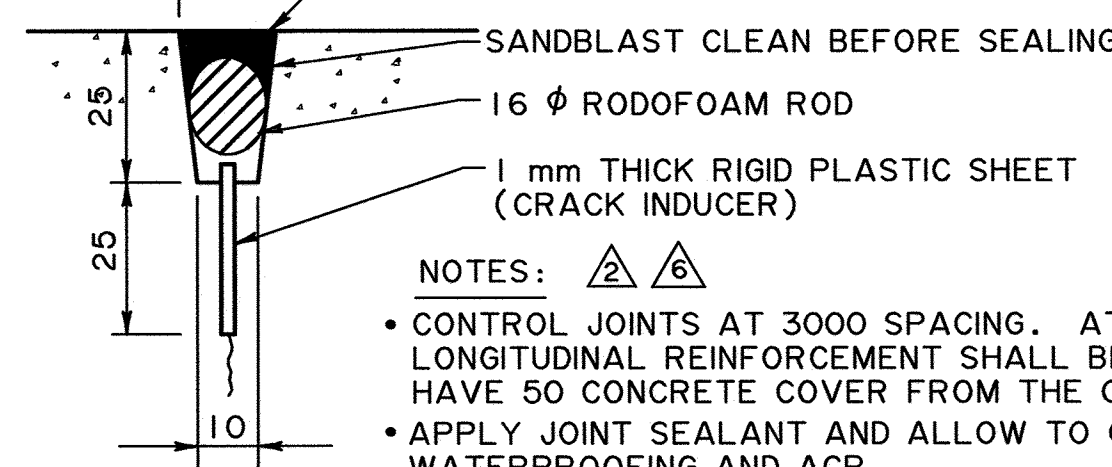
**TYPICAL BRIDGE BARRIER SECTION**  
1:10

NOTE: SEE SECTION 'A' FOR DETAILS NOT SHOWN ON SECTIONS 'B', 'C' AND 'D'



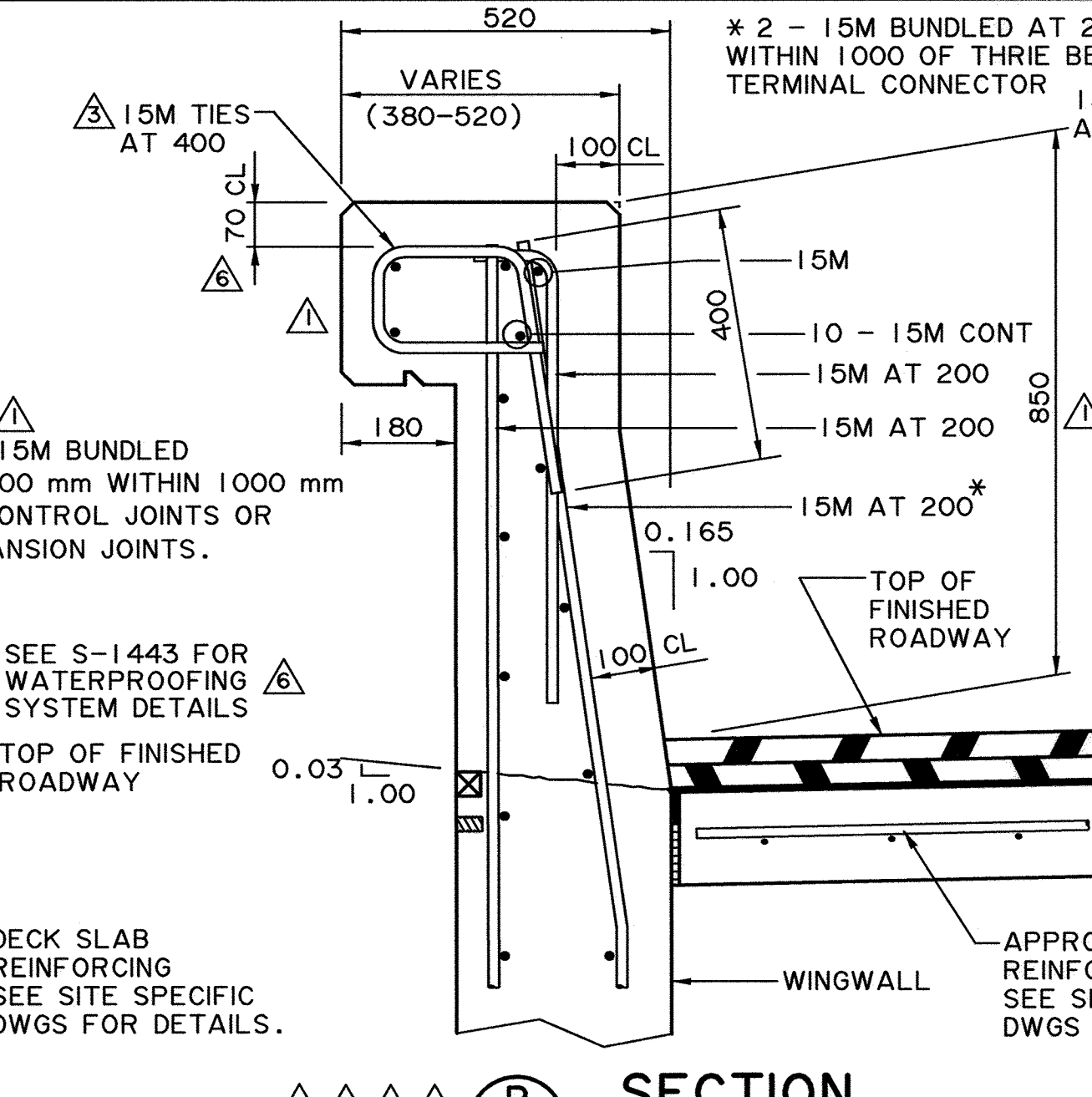
**SECTION D**  
1:10

SIKAFLEX 15LM NON-SAG OR APPROVED EQUIVALENT. FOR EXTERIOR FASCIAS, SIKAFLEX - 2C NS/SL SEALANT SHALL BE USED. THE COLOR OF THE 2C NS/SL SEALANT SHALL CLOSELY MATCH THE COLOR OF THE PIGMENTED SEALER APPLIED TO THE ADJACENT CONCRETE SURFACES



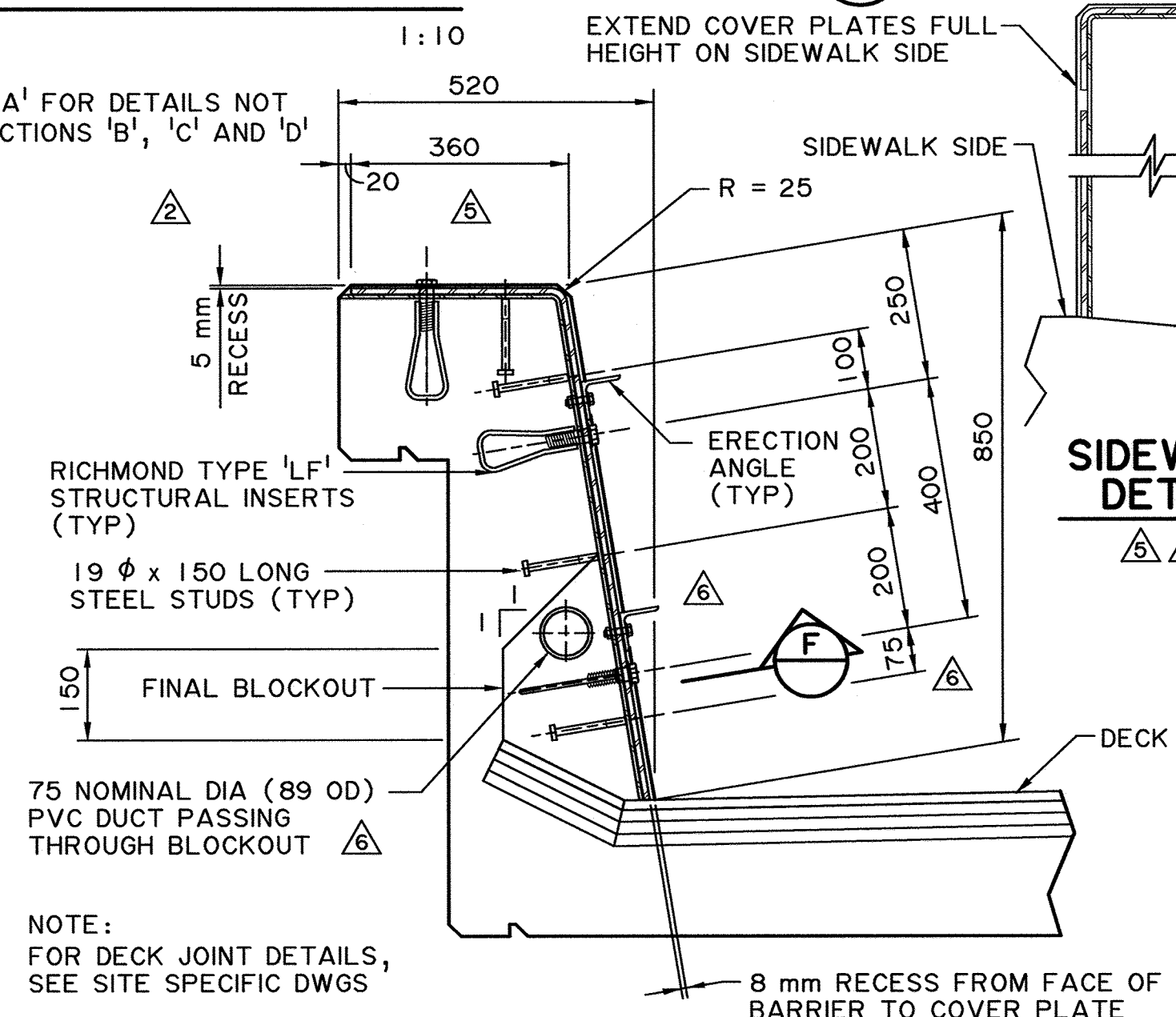
**CONTROL JOINT DETAIL**  
NTS

NOTES:  
• CONTROL JOINTS AT 3000 SPACING. AT CONTROL JOINTS, LONGITUDINAL REINFORCEMENT SHALL BE DISCONTINUOUS AND HAVE 50 CONCRETE COVER FROM THE CENTERLINE OF THE JOINTS  
• APPLY JOINT SEALANT AND ALLOW TO CURE PRIOR TO PLACING WATERPROOFING AND ACP



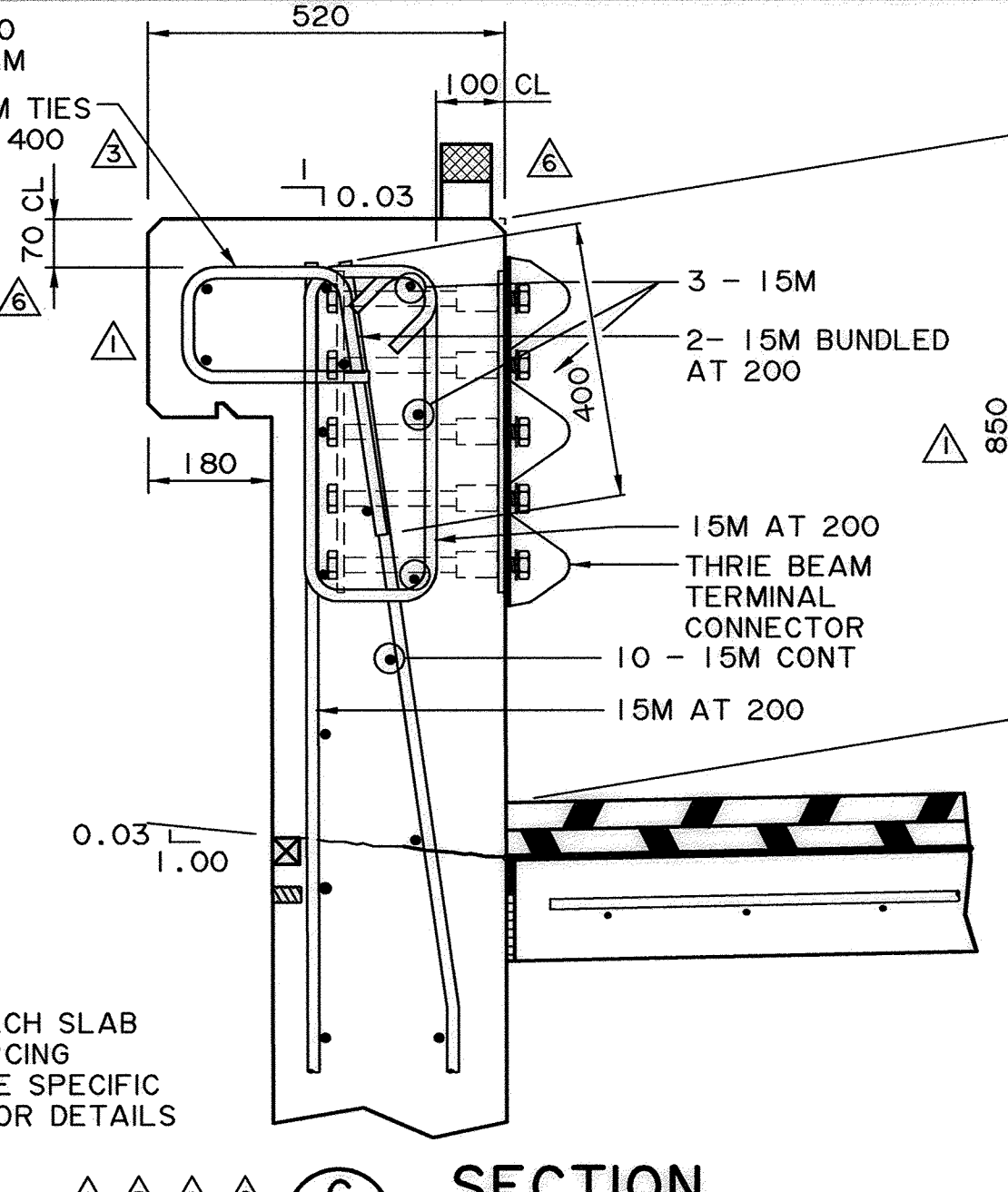
**SECTION B**  
1:10

EXTEND COVER PLATES FULL HEIGHT ON SIDEWALK SIDE

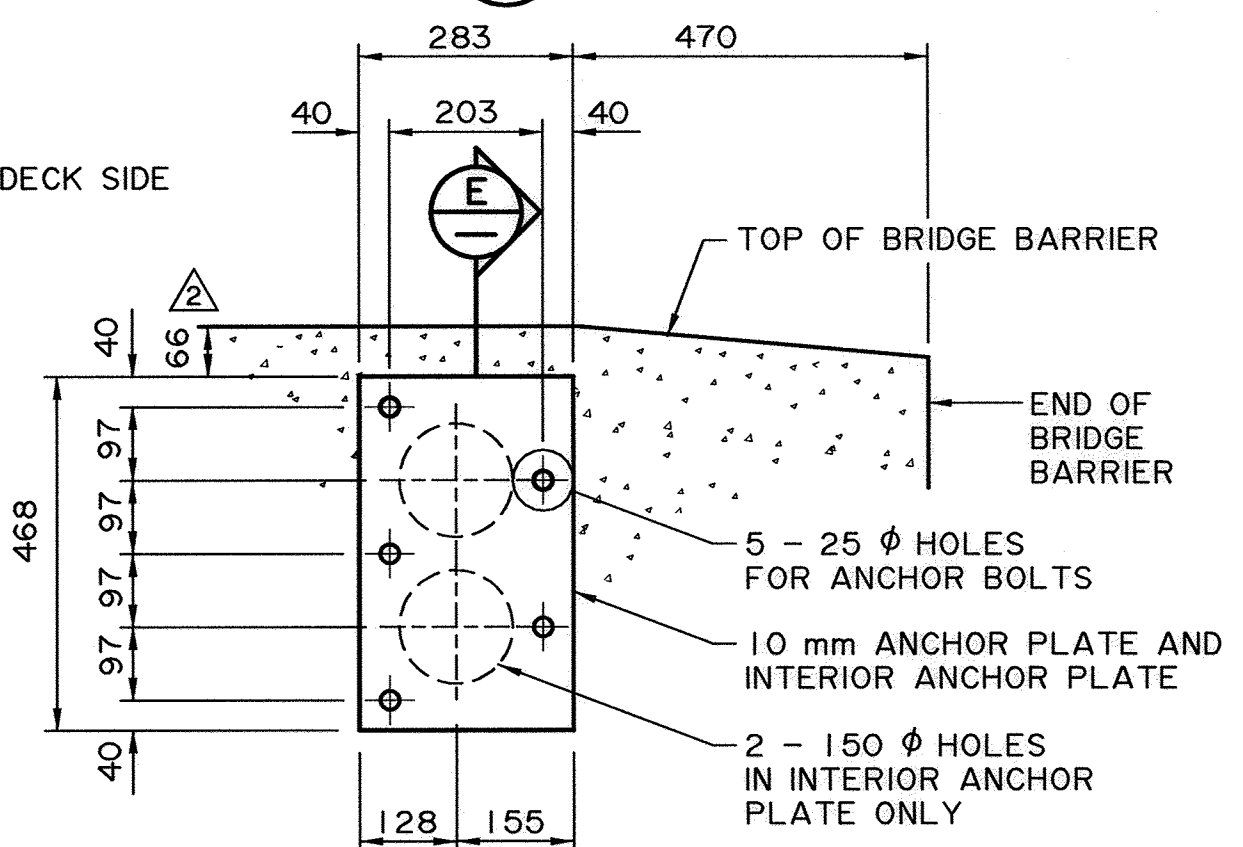


**TYPICAL BRIDGE BARRIER SECTION AT DECK JOINT**  
1:10

NOTE: FOR DECK JOINT DETAILS, SEE SITE SPECIFIC DWGS

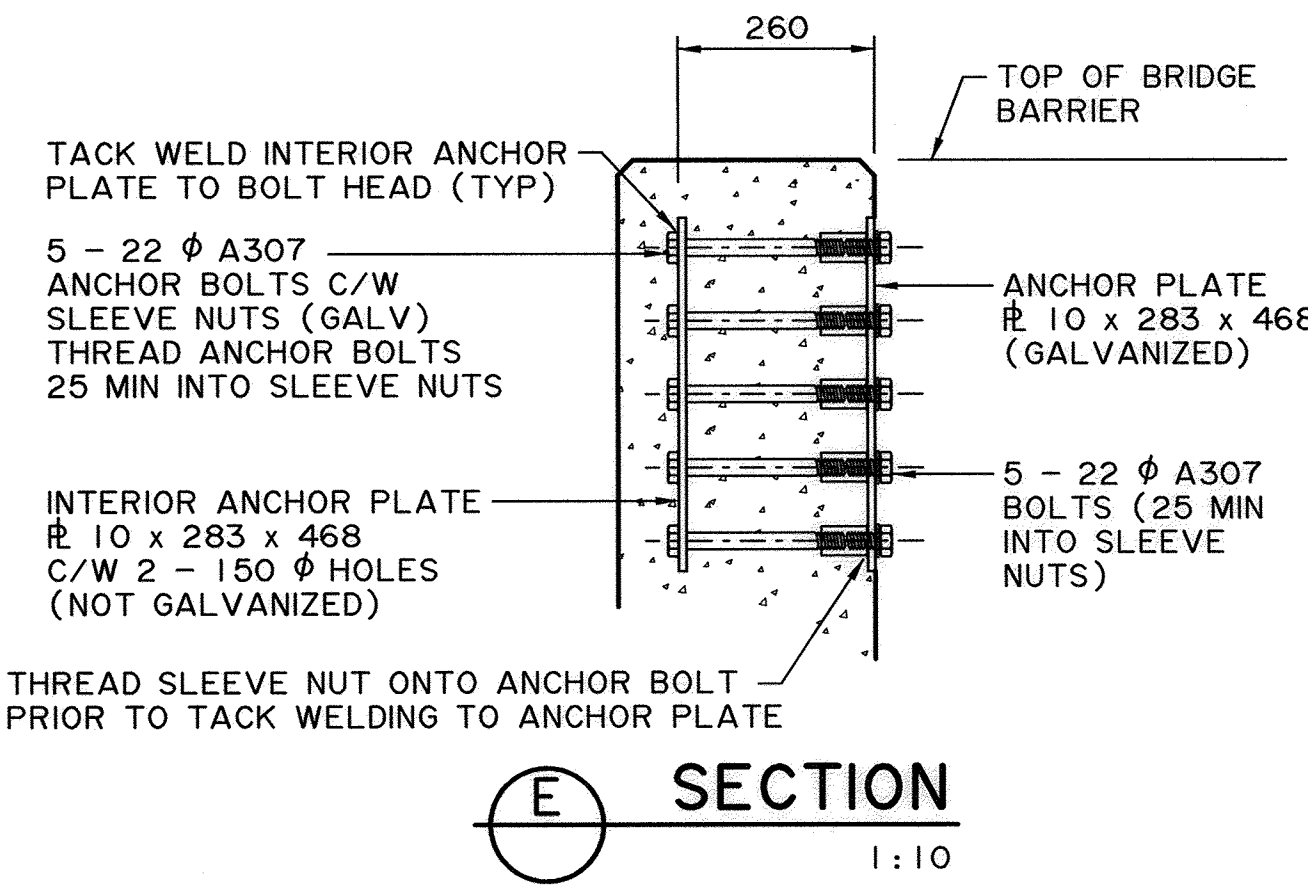


**SECTION C**  
1:10



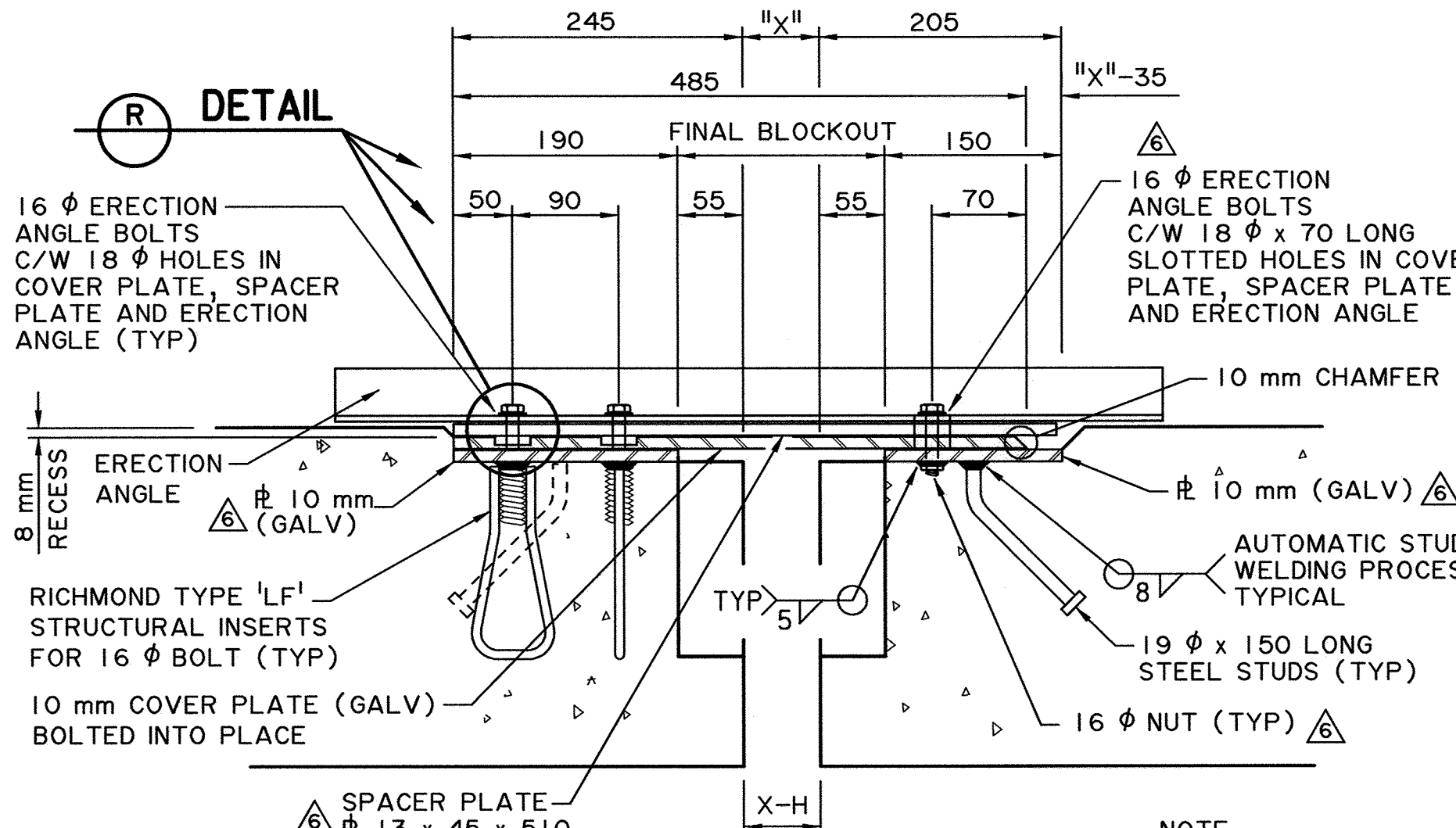
**APPROACH RAIL TRANSITION ANCHORAGE DETAIL**  
1:10

(THRIE BEAM TERMINAL CONNECTOR NOT SHOWN FOR CLARITY)



**SECTION E**  
1:10

• WORK THESE DRAWINGS TOGETHER: S-1650 AND S-1651



**SECTION F**  
1:5

NOTE: FOR 'X' AND 'H' VALUES, SEE SITE SPECIFIC DWGS.

<p>UMA Engineering Ltd. Engineers, Planners &amp; Surveyors</p>	<p>PERMIT TO PRACTICE UMA ENGINEERING LTD. PERMIT NUMBER: P 5778 ORIGINAL SIGNED AND SIGNED BY: ART WASHUTA ON: NOVEMBER 21, 2000 The Association of Professional Engineers, Geologists and Geophysicists of Alberta</p>	<p>DESIGNER PROFESSIONAL ENGINEER ALBERTA ORIGINAL STAMPED AND SIGNED BY: R.J. RAMSAY ON: NOV 21, 2000</p>	<p>PROFESSIONAL ENGINEER ALBERTA ORIGINAL STAMPED AND SIGNED BY: D.B. SERINK ON: NOV 21, 2000</p>	<p>2012-01-18 DECK DRAIN, CONTROL JOINT, DUCT LOCATION, REBAR COVER &amp; ACP &amp; REFLECTOR SHOWN</p>	<p>RECOMMENDED DIRECTOR BRIDGE ENGINEERING</p>	<p>Alta INFRASTRUCTURE</p>	
				<p>2009-10-01 WINGWALL ADDED TO BRIDGE BARRIER SECTIONS. BARRIER REINFORCING REVISED</p>			<p>2008-09-18 BRIDGE BARRIER END PLAN &amp; ELEVATION, CONSTRUCTION JOINT</p>
<p>DATE NOV 22, 2000</p>						<p>APPROVED EXECUTIVE DIRECTOR TECHNICAL STANDARDS BRANCH</p>	<p>PL-2 SINGLE SLOPE CONCRETE BRIDGE BARRIER BARRIER DETAILS</p>
<p>DATE NOV 22, 2000</p>						<p>ORIGINAL SIGNED BY TIM HAWNT</p>	