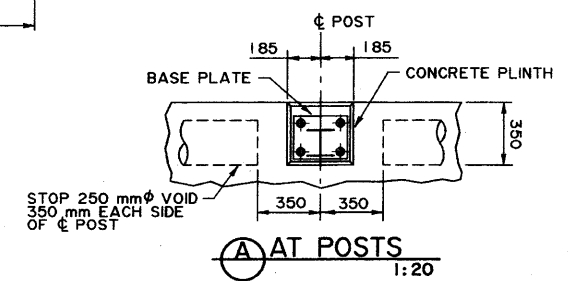
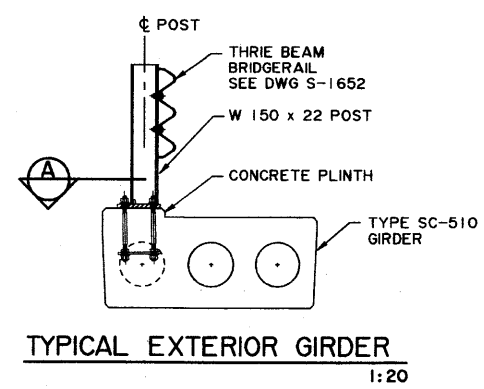
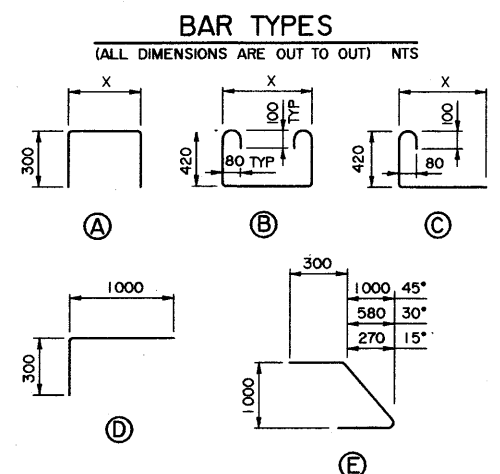


\* NOTE: FOR NUMBER AND SPACING OF ANCHOR BOLTS, SEE BRIDGERAIL LAYOUT ON SITE SPECIFIC DRAWINGS.

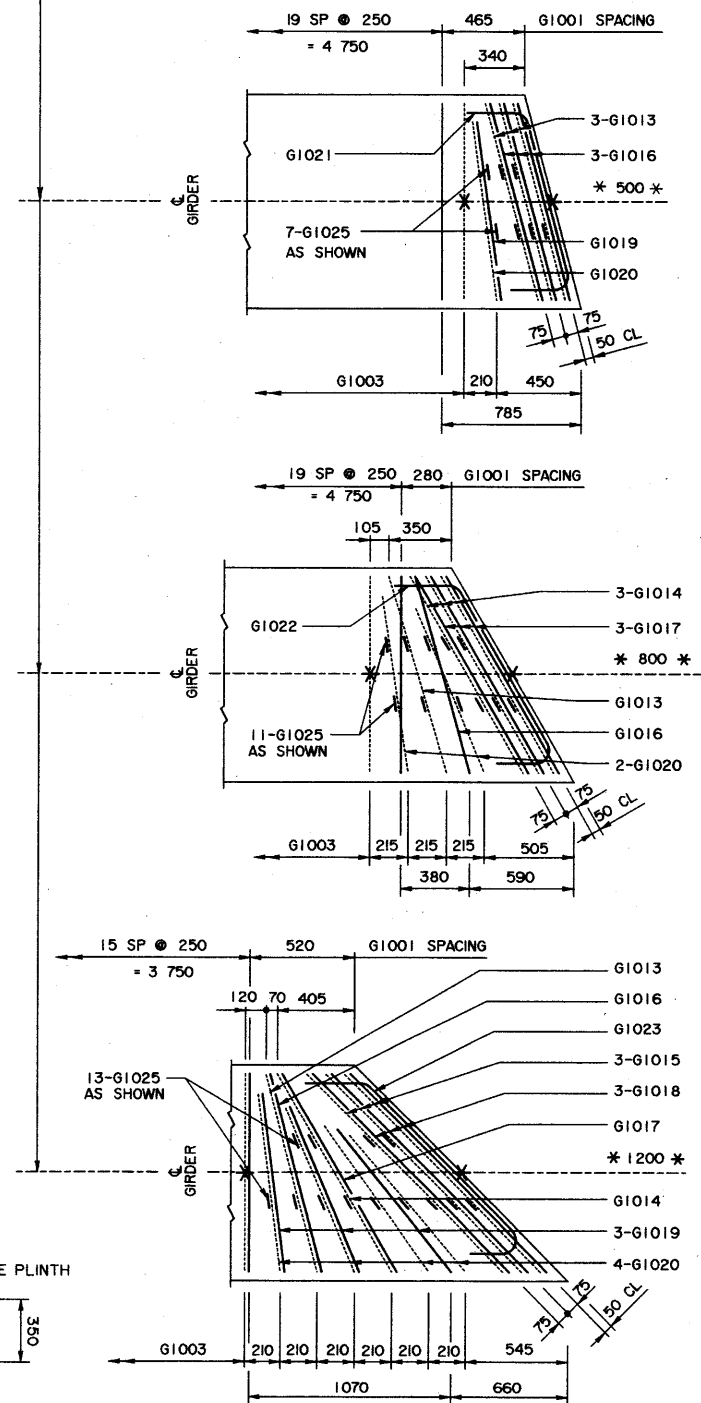
**BAR LIST: — INTERIOR SKEWED GIRDER — EXTRA BARS FOR 2 ENDS**

MARK	SIZE	TYPE	X	Y	LENGTH	15° SKEW		30° SKEW		45° SKEW	
						NO	MASS	NO	MASS	NO	MASS
G1013	10	B	1 165		2 260	6	11	2	4	2	4
G1014	10	B	1 300		2 390			6	11	2	4
G1015	10	B	1 590		2 680					6	13
G1016	10	A	1 165		1 765	6	8	2	3	2	3
G1017	10	A	1 300		1 900			6	9	2	3
G1018	10	A	1 590		2 190					6	10
G1019	10	D			1 280	2	2			6	6
G1020	10	C	1 000		1 520	2	2	4	5	8	9
G1021	10	E			1 585	2	2				
G1022	10	E			1 705			2	3		
G1023	10	E			1 965					2	3
G1025	10	C	120		670	14	7	22	12	26	14
TOTAL						kg	32	47	69		



**NOTE:**

- SHIFT SLAB BARS TO CLEAR LIFTING HOOK POCKETS WHERE REQUIRED.
- SLAB BARS NOT DIMENSIONED ARE TIGHT AGAINST ADJACENT STIRRUP.
- USE THIS Ø DIMENSION TO IDENTIFY THIS STIRRUP (\*) IN THE STIRRUP SERIES FOR A SQUARE ENDED UNIT.



• SKEWS ARE SHOWN RIGHT HAND FORWARD.  
• LEFT HAND SKEWS ARE OPPOSITE AS SHOWN.  
• WORK THESE DRAWINGS TOGETHER : S-1656-01 AND S-1657-01

DESIGNER		CHECKER		DATE		REVISIONS		BY		DATE	
P. R. Y.		[Signature]		July 10/01				[Signature]		July 10/01	

RECOMMENDED DIRECTOR BRIDGE ENGINEERING

APPROVED EXECUTIVE DIRECTOR TECHNICAL STANDARDS BRANCH

**Alberta TRANSPORTATION**

**PRESTRESSED CONCRETE**  
6 m TYPE SC-510  
INTERIOR AND EXTERIOR GIRDER LAYOUTS

DATE: 2001-04-12  
SHEET: 2 of 2  
DRAWING: S-1657-01

S-1657-01 FEB 2001-04-17