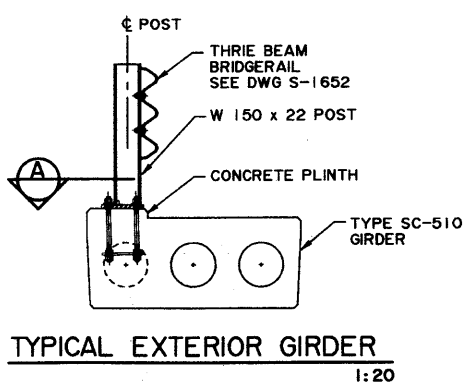
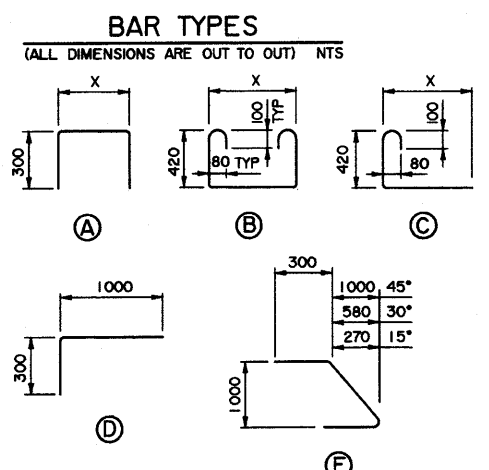


EXTERIOR GIRDER
1:50

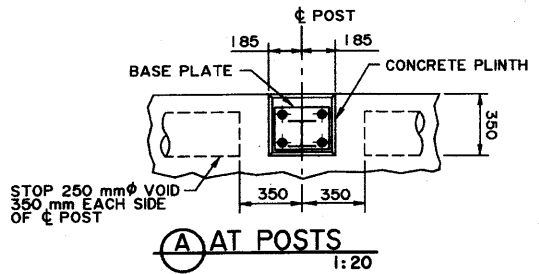
INTERIOR GIRDER
1:50

* NOTE: FOR NUMBER AND SPACING OF ANCHOR BOLTS, SEE BRIDGERAIL LAYOUT ON SITE SPECIFIC DRAWINGS.

BAR LIST: — INTERIOR SKEWED GIRDER — EXTRA BARS FOR 2 ENDS											
MARK	SIZE	TYPE	X	Y	LENGTH	15° SKEW		30° SKEW		45° SKEW	
						NO	MASS	NO	MASS	NO	MASS
G1013	10	B	1 165		2 260	6	11	2	4	2	4
G1014	10	B	1 300		2 390			6	11	2	4
G1015	10	B	1 590		2 680					6	13
G1016	10	A	1 165		1 765	6	8	2	3	2	3
G1017	10	A	1 300		1 900			6	9	2	3
G1018	10	A	1 590		2 190					6	10
G1019	10	D			1 280	2	2			6	6
G1020	10	C	1 000		1 520	2	2	4	5	8	9
G1021	10	E			1 585	2	2				
G1022	10	E			1 705			2	3		
G1023	10	E			1 965					2	3
G1025	10	C	120		670	14	7	22	12	26	14
TOTAL						kg	32	47		69	

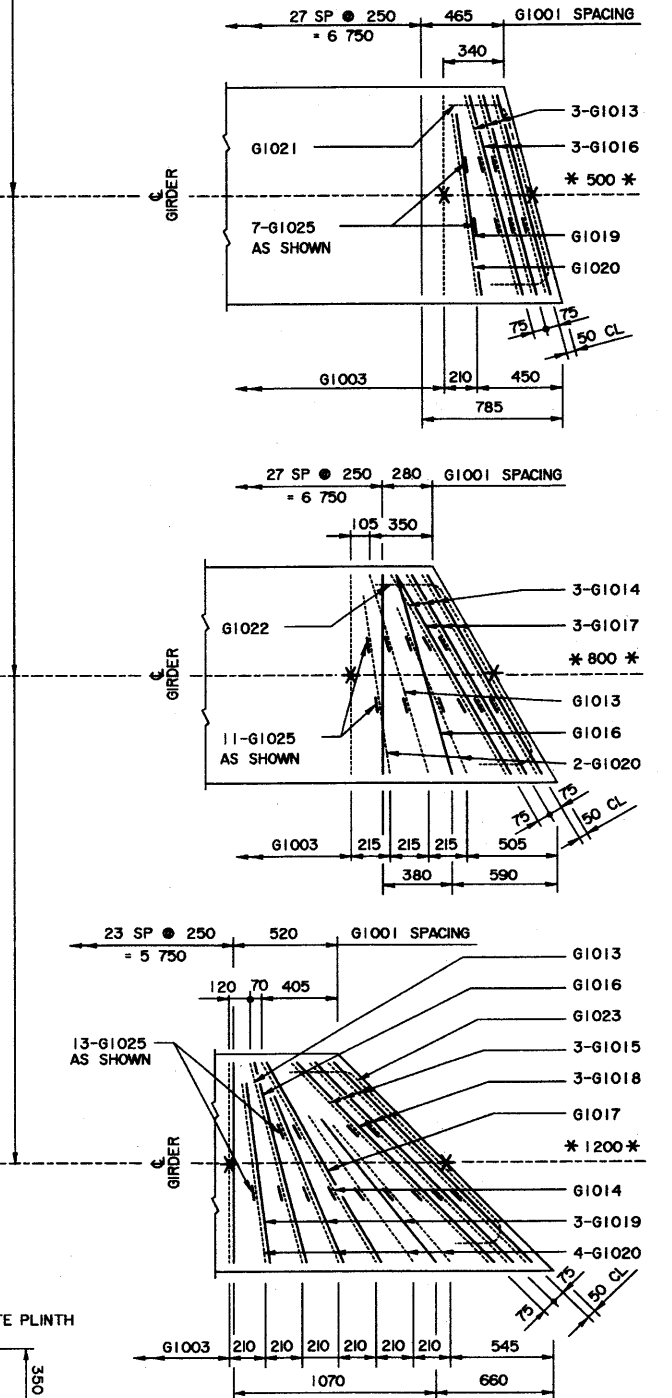


TYPICAL EXTERIOR GIRDER
1:20



AT POSTS
1:20

NOTE:
 • SHIFT SLAB BARS TO CLEAR LIFTING HOOK POCKETS WHERE REQUIRED.
 • SLAB BARS NOT DIMENSIONED ARE TIGHT AGAINST ADJACENT STIRRUP.
 • USE THIS ϕ DIMENSION TO IDENTIFY THIS STIRRUP (*) IN THE STIRRUP SERIES FOR A SQUARE ENDED UNIT.



INTERIOR GIRDER REINFORCING BARS

• SKEWS ARE SHOWN RIGHT HAND FORWARD. 1:20
 • LEFT HAND SKEWS ARE OPPOSITE AS SHOWN.

• WORK THESE DRAWINGS TOGETHER : S-1658-01 AND S-1659-01

RECOMMENDED DIRECTOR BRIDGE ENGINEERING		Albarta TRANSPORTATION	
APPROVED EXECUTIVE DIRECTOR TECHNICAL STANDARDS BRANCH		PRESTRESSED CONCRETE 8 m TYPE SC-510 INTERIOR AND EXTERIOR GIRDER LAYOUTS	
DESIGNER	CHECKER	DATE	DRAWING
R. J. G. Y.	CTC	July 10/01	S-1659-01
REV	DATE	REVISIONS	SHEET
			2 of 2

S1659-01-1001-04-17