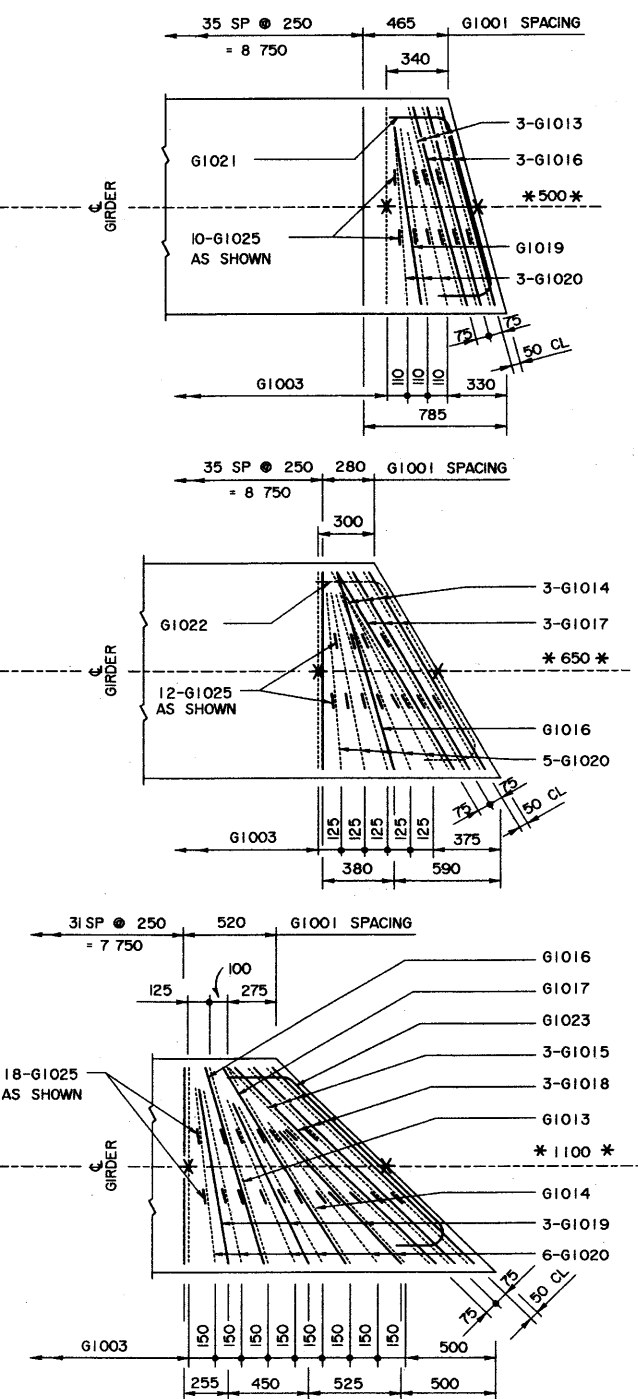
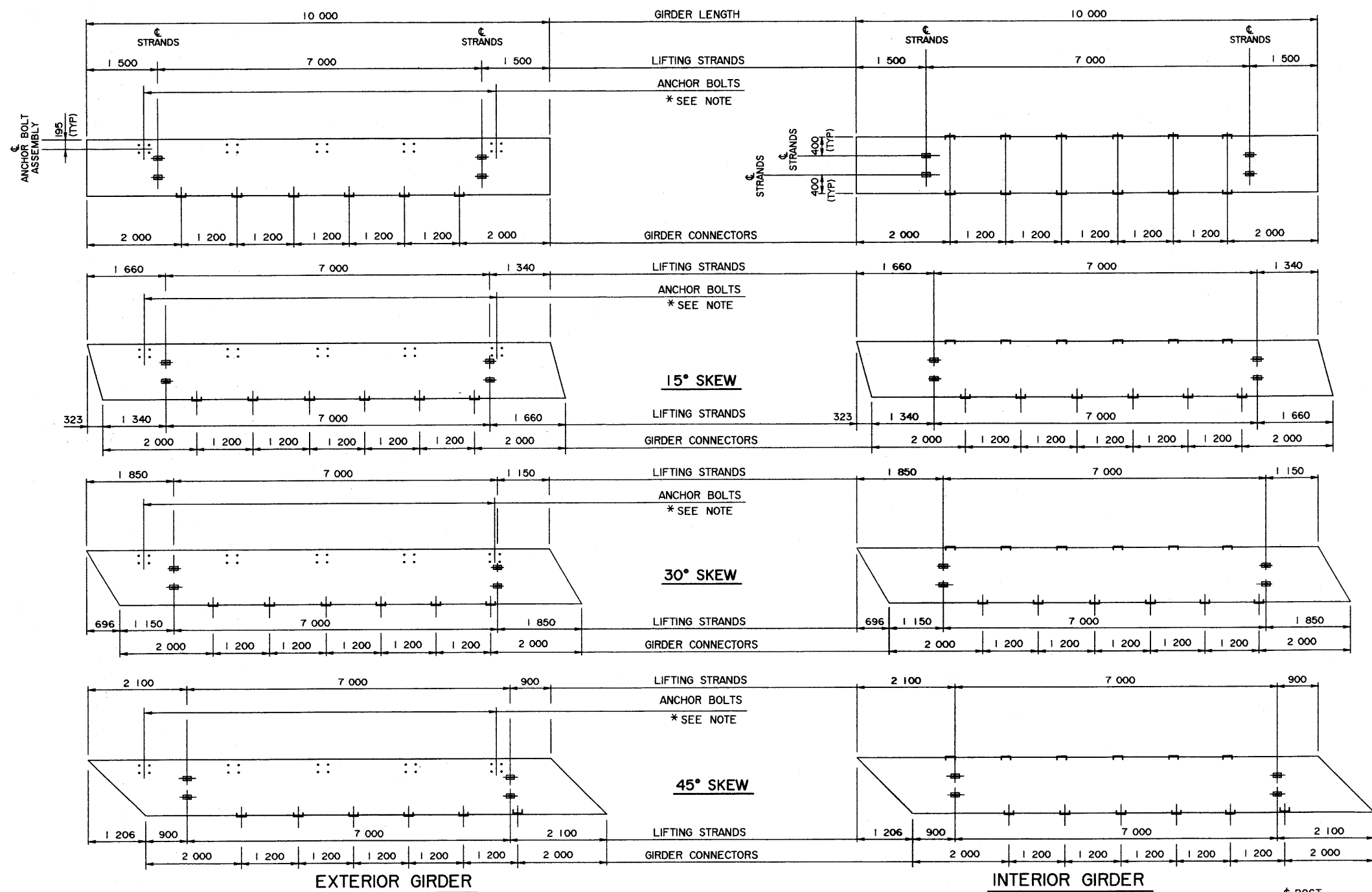


NOTE:
 • SHIFT SLAB BARS TO CLEAR LIFTING HOOK POCKETS WHERE REQUIRED.
 • SLAB BARS NOT DIMENSIONED ARE TIGHT AGAINST ADJACENT STIRRUP.
 • USE THIS ϵ DIMENSION TO IDENTIFY THIS STIRRUP (*) IN THE STIRRUP SERIES FOR A SQUARE ENDED UNIT.



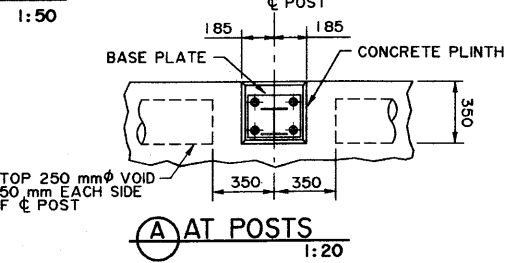
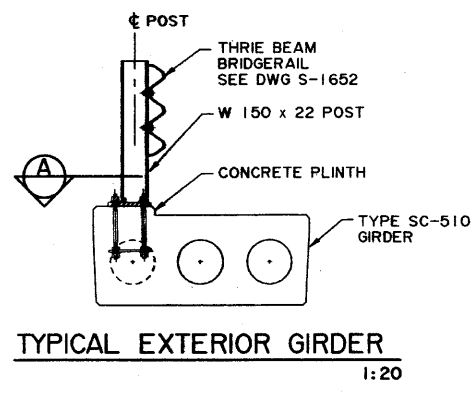
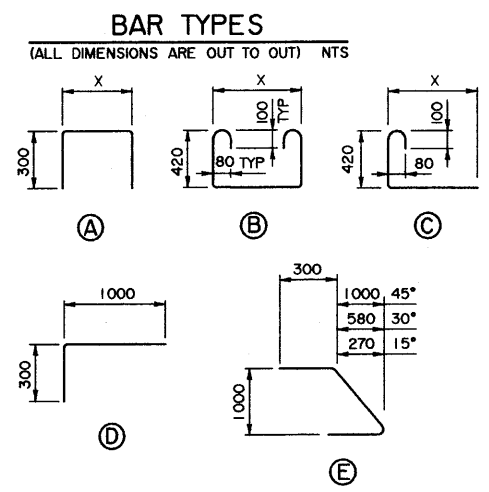
* NOTE: FOR NUMBER AND SPACING OF ANCHOR BOLTS, SEE BRIDGERAIL LAYOUT ON SITE SPECIFIC DRAWINGS.

EXTERIOR GIRDER
1:50

INTERIOR GIRDER
1:50

BAR LIST: — INTERIOR SKEWED GIRDER — EXTRA BARS FOR 2 ENDS

MARK	SIZE	TYPE	X	Y	LENGTH	15° SKEW		30° SKEW		45° SKEW	
						NO	MASS	NO	MASS	NO	MASS
G1013	10	B	1 165		2 260	6	11			2	4
G1014	10	B	1 300		2 390			6	11	2	4
G1015	10	B	1 590		2 680					6	13
G1016	10	A	1 165		1 765	6	8	2	3	2	3
G1017	10	A	1 300		1 900			6	9	2	3
G1018	10	A	1 590		2 190					6	10
G1019	10	D			1 280	2	2			6	6
G1020	10	C	1 000		1 520	6	7	10	12	12	14
G1021	10	E			1 585	2	2				
G1022	10	E			1 705			2	3		
G1023	10	E			1 965					2	3
G1025	10	C	120		670	20	11	24	13	36	19
TOTAL						kg	41	51	79		



INTERIOR GIRDER REINFORCING BARS
1:20

• SKEWS ARE SHOWN RIGHT HAND FORWARD.
 • LEFT HAND SKEWS ARE OPPOSITE AS SHOWN.
 • WORK THESE DRAWINGS TOGETHER : S-1660-01 AND S-1661-01

DESIGNER		CHECKER		DATE		BY		DATE	
DATE		REVISIONS		BY		DATE		DATE	
DATE		REVISIONS		BY		DATE		DATE	

RECOMMENDED DIRECTOR BRIDGE ENGINEERING

APPROVED EXECUTIVE DIRECTOR TECHNICAL STANDARDS BRANCH

Albarta TRANSPORTATION

PRESTRESSED CONCRETE
10 m TYPE SC-510
INTERIOR AND EXTERIOR GIRDER LAYOUTS

DATE 2001-04-12 SHEET 2 OF 2 DRAWING S-1661-01

S1661-01-101-11-11-01-2001-04-17