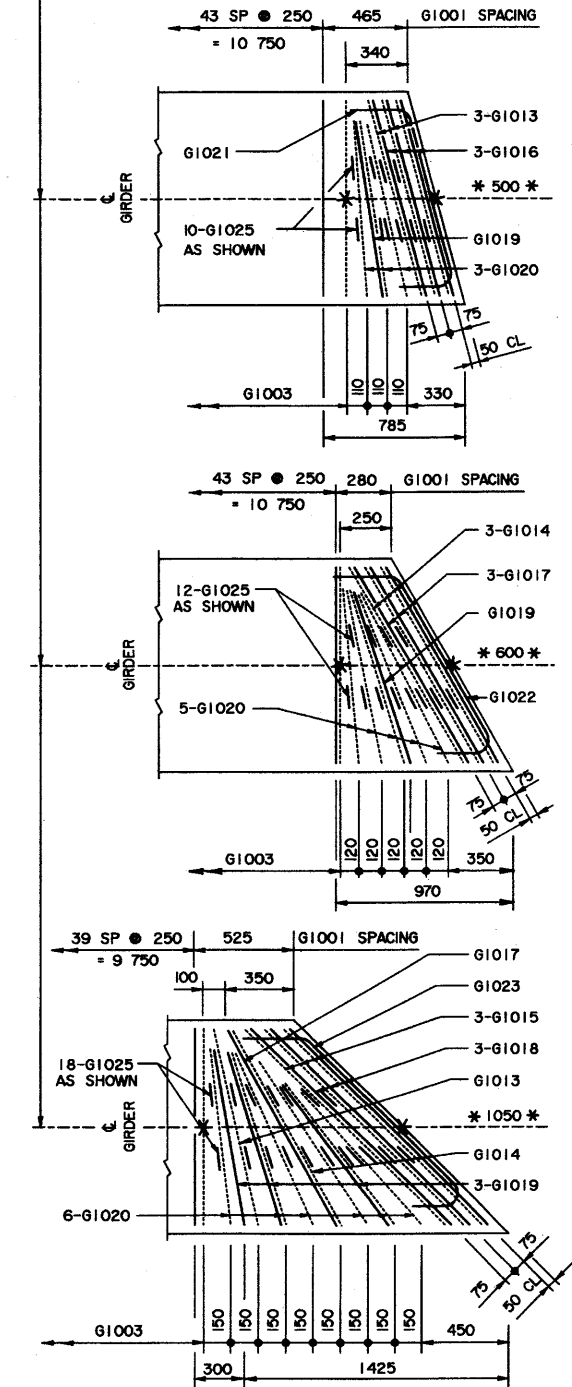


**NOTE:**

- SHIFT SLAB BARS TO CLEAR LIFTING HOOK POCKETS WHERE REQUIRED.
- SLAB BARS NOT DIMENSIONED ARE TIGHT AGAINST ADJACENT STIRRUP.
- USE THIS  $\phi$  DIMENSION TO IDENTIFY THIS STIRRUP (\*) IN THE STIRRUP SERIES FOR A SQUARE ENDED UNIT.



**SKREW GIRDER REINFORCING BARS**

- SKEWS ARE SHOWN RIGHT HAND FORWARD.
- LEFT HAND SKEWS ARE OPPOSITE AS SHOWN.

• WORK THESE DRAWINGS TOGETHER : S-1662-01 AND S-1663-01

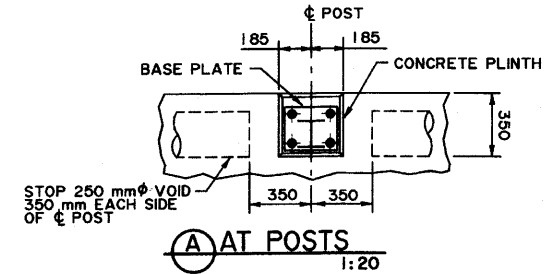
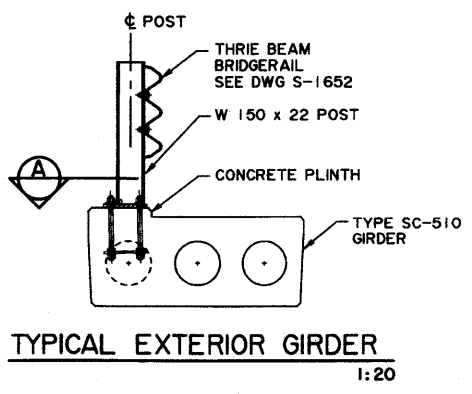
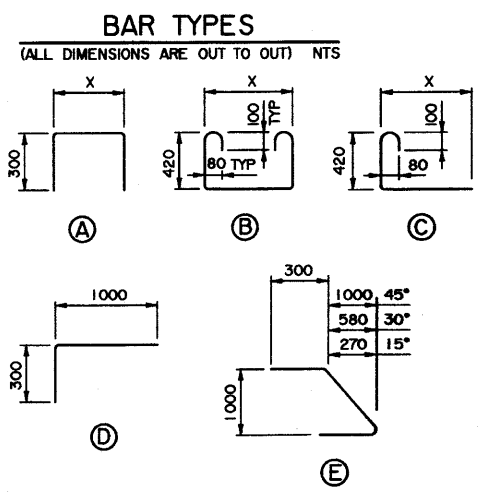
\* NOTE: FOR NUMBER AND SPACING OF ANCHOR BOLTS, SEE BRIDGERAIL LAYOUT ON SITE SPECIFIC DRAWINGS.

**EXTERIOR GIRDER**  
1:50

**INTERIOR GIRDER**  
1:50

**BAR LIST: — INTERIOR SKEWED GIRDER — EXTRA BARS FOR 2 ENDS**

MARK	SIZE	TYPE	X	Y	LENGTH	15° SKEW		30° SKEW		45° SKEW	
						NO	MASS	NO	MASS	NO	MASS
G1013	10	B	165		2 260	6	11			2	4
G1014	10	B	300		2 390			6	11	2	4
G1015	10	B	590		2 680					6	13
G1016	10	A	165		1 765	6	8				
G1017	10	A	300		1 900			6	9	2	3
G1018	10	A	590		2 190					6	10
G1019	10	D			1 280	2	2	2	2	6	6
G1020	10	C	1000		1 520	6	7	10	12	12	14
G1021	10	E			1 585	2	2				
G1022	10	E			1 705			2	3		
G1023	10	E			1 965					2	3
G1025	10	C	120		670	20	11	24	13	36	19
<b>TOTAL</b>						<b>kg</b>	<b>41</b>	<b>50</b>			<b>76</b>



DESIGNER	REVISIONS	BY	DATE
REVISIONS	CHECKER	DATE	

RECOMMENDED  
DIRECTOR BRIDGE ENGINEERING

APPROVED  
EXECUTIVE DIRECTOR  
TECHNICAL STANDARDS BRANCH

**Albarta TRANSPORTATION**

**PRESTRESSED CONCRETE**  
12 m TYPE SC-510  
INTERIOR AND EXTERIOR GIRDER LAYOUTS

DATE: 2001-04-12  
SHEET: 2 of 2  
DRAWING: S-1663-01

S1663-01.DWG PLOTTED 2001-04-17