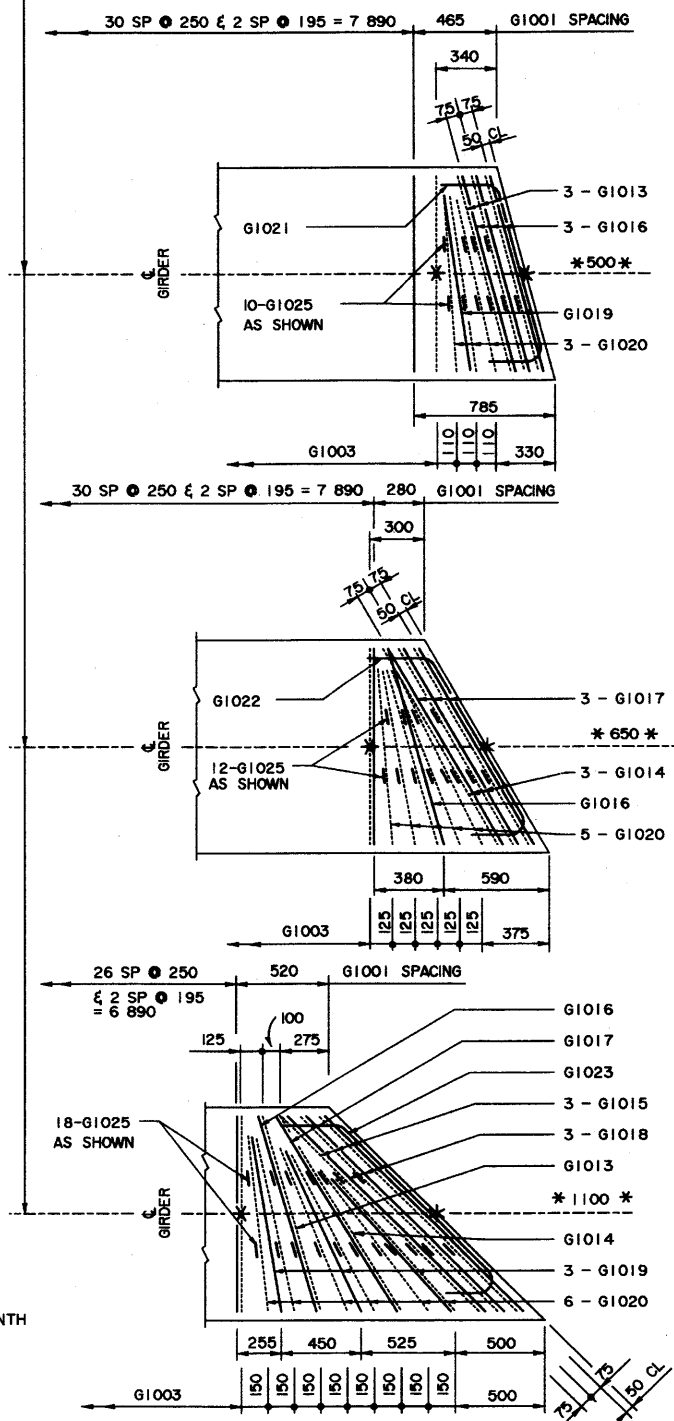


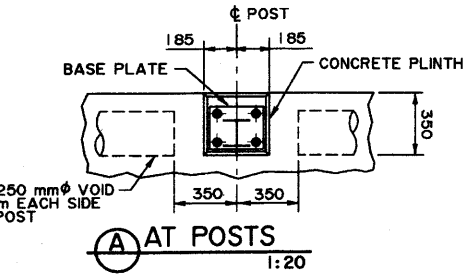
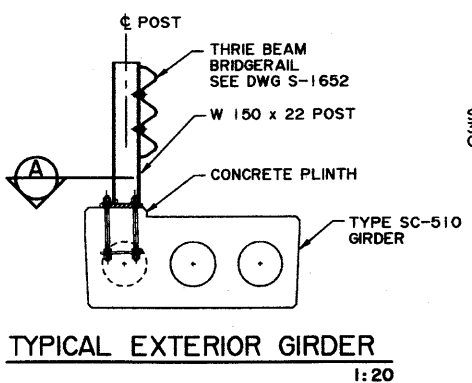
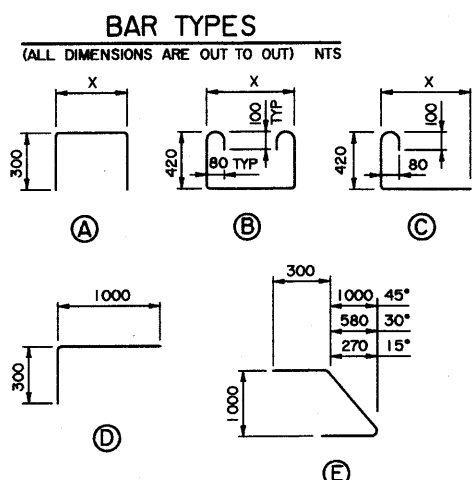
NOTE:

- SHIFT SLAB BARS TO CLEAR LIFTING HOOK POCKETS WHERE REQUIRED.
- SLAB BARS NOT DIMENSIONED ARE TIGHT AGAINST ADJACENT STIRRUP.
- USE THIS ϕ DIMENSION TO IDENTIFY THIS STIRRUP (*) IN THE STIRRUP SERIES FOR A SQUARE ENDED UNIT.



* NOTE: FOR NUMBER AND SPACING OF ANCHOR BOLTS, SEE BRIDGERAIL LAYOUT ON SITE SPECIFIC DRAWINGS.

BAR LIST: — INTERIOR SKEWED GIRDER — EXTRA BARS FOR 2 ENDS									
MARK	SIZE	TYPE	X	Y	LENGTH	15° SKEW NO	30° SKEW MASS	45° SKEW NO	MASS
G1013	10	B	1165		2260	6	11	2	4
G1014	10	B	1300		2390		6	11	2
G1015	10	B	1590		2680			6	13
G1016	10	A	1165		1765	6	8	2	3
G1017	10	A	1300		1900		6	9	2
G1018	10	A	1590		2190			6	10
G1019	10	D			1280	2	2		6
G1020	10	C	1000		1520	6	7	10	12
G1021	10	E			1585	2	2		
G1022	10	E			1705			2	3
G1023	10	E			1965				2
G1025	10	C	120		670	20	11	24	13
					TOTAL kg		41	51	79



INTERIOR GIRDER REINFORCING BARS

- SKEWS ARE SHOWN RIGHT HAND FORWARD.
- LEFT HAND SKEWS ARE OPPOSITE AS SHOWN.
- WORK THESE DRAWINGS TOGETHER : S-1668-01 AND S-1669-01

REV	DATE	REVISIONS	BY
DESIGNER		CHECKER	

RECOMMENDED
DIRECTOR BRIDGE ENGINEERING

APPROVED
EXECUTIVE DIRECTOR
TECHNICAL STANDARDS BRANCH

Alberta TRANSPORTATION

PRESTRESSED CONCRETE
9.14 m TYPE SC-510
INTERIOR AND EXTERIOR GIRDER LAYOUTS

DATE: 2001-04-30 SHEET: 2 of 2 DRAWING: S-1669-01

S:\66901.dwg PLOTTED 2001-04-30