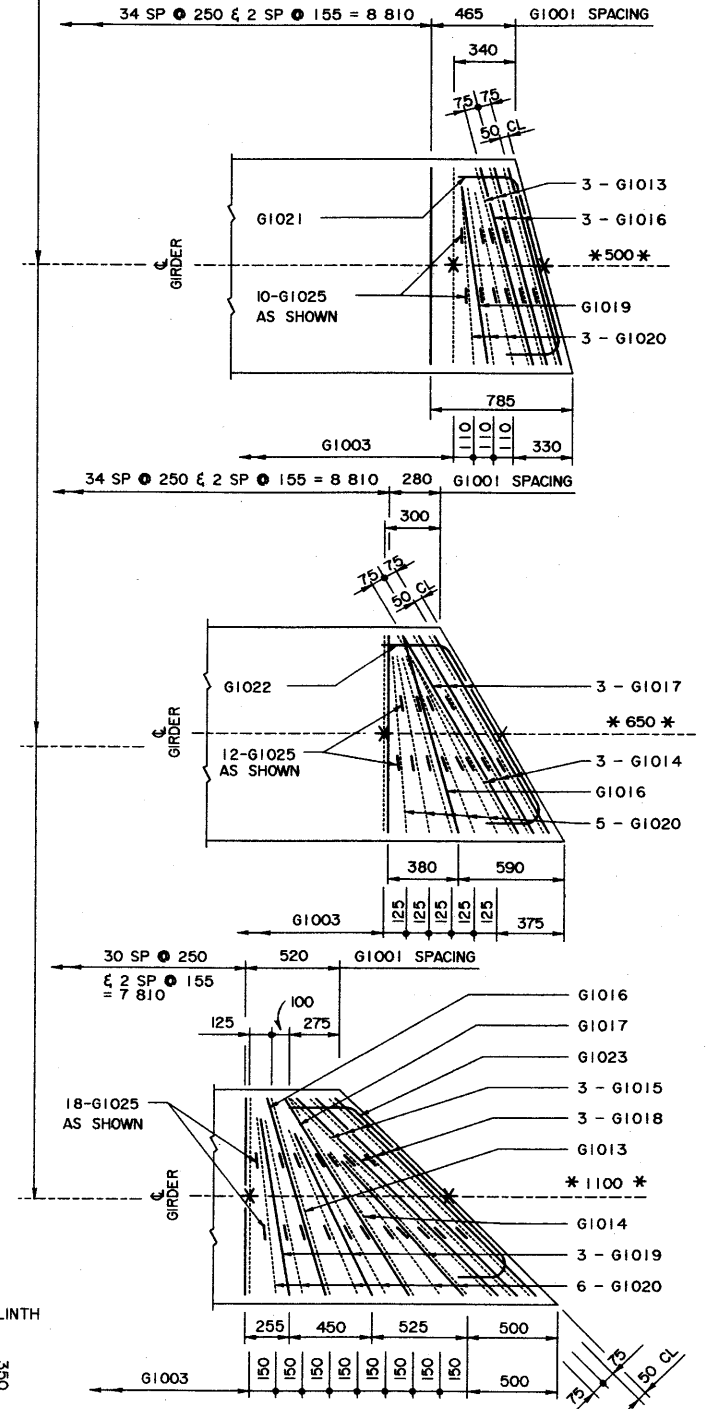


NOTE:

- SHIFT SLAB BARS TO CLEAR LIFTING HOOK POCKETS WHERE REQUIRED.
- SLAB BARS NOT DIMENSIONED ARE TIGHT AGAINST ADJACENT STIRRUP.
- USE THIS ϕ DIMENSION TO IDENTIFY THIS STIRRUP (*) IN THE STIRRUP SERIES FOR A SQUARE ENDED UNIT.



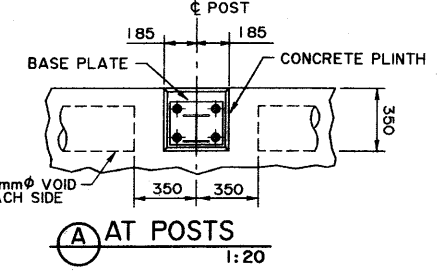
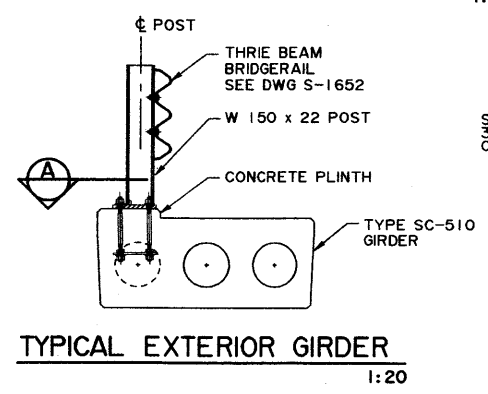
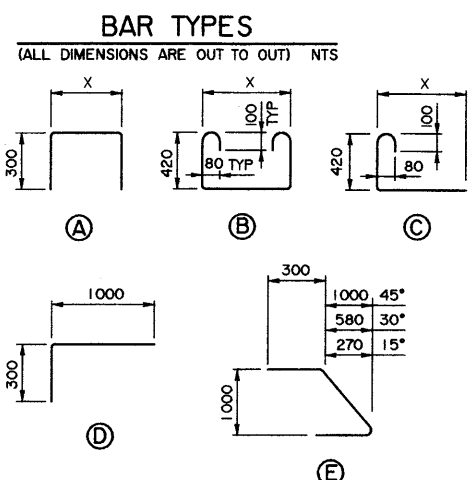
* NOTE: FOR NUMBER AND SPACING OF ANCHOR BOLTS, SEE BRIDGE RAIL LAYOUT ON SITE SPECIFIC DRAWINGS.

EXTERIOR GIRDER
1:50

INTERIOR GIRDER
1:50

BAR LIST: — INTERIOR SKEWED GIRDER — EXTRA BARS FOR 2 ENDS

MARK	SIZE	TYPE	X	Y	LENGTH	15° SKEW		30° SKEW		45° SKEW	
						NO	MASS	NO	MASS	NO	MASS
G1013	10	B	1 165		2 260	6	11			2	4
G1014	10	B	1 300		2 390			6	11	2	4
G1015	10	B	1 590		2 680					6	13
G1016	10	A	1 165		1 765	6	8	2	3	2	3
G1017	10	A	1 300		1 900			6	9	2	3
G1018	10	A	1 590		2 190					6	10
G1019	10	D			1 280	2	2			6	6
G1020	10	C	1 000		1 520	6	7	10	12	12	14
G1021	10	E			1 585	2	2				
G1022	10	E			1 705			2	3		
G1023	10	E			1 965					2	3
G1025	10	C	120		670	20	11	24	13	36	19
TOTAL kg							41		51		79



INTERIOR GIRDER REINFORCING BARS
1:20

- SKEWS ARE SHOWN RIGHT HAND FORWARD.
- LEFT HAND SKEWS ARE OPPOSITE AS SHOWN.
- WORK THESE DRAWINGS TOGETHER : S-1670-01 AND S-1671-01

RECOMMENDED DIRECTOR BRIDGE ENGINEERING	APPROVED EXECUTIVE DIRECTOR TECHNICAL STANDARDS BRANCH
DESIGNER	CHECKER
DATE	DATE
REVISIONS	BY

Alberta TRANSPORTATION

PRESTRESSED CONCRETE
10.06 m TYPE SC-510
INTERIOR AND EXTERIOR GIRDER LAYOUTS

DATE: 2001-04-30
SHEET: 2 of 2
DRAWING: S-1671-01

S1671-01-01 - 1:20 FEB 2001 - 04-30