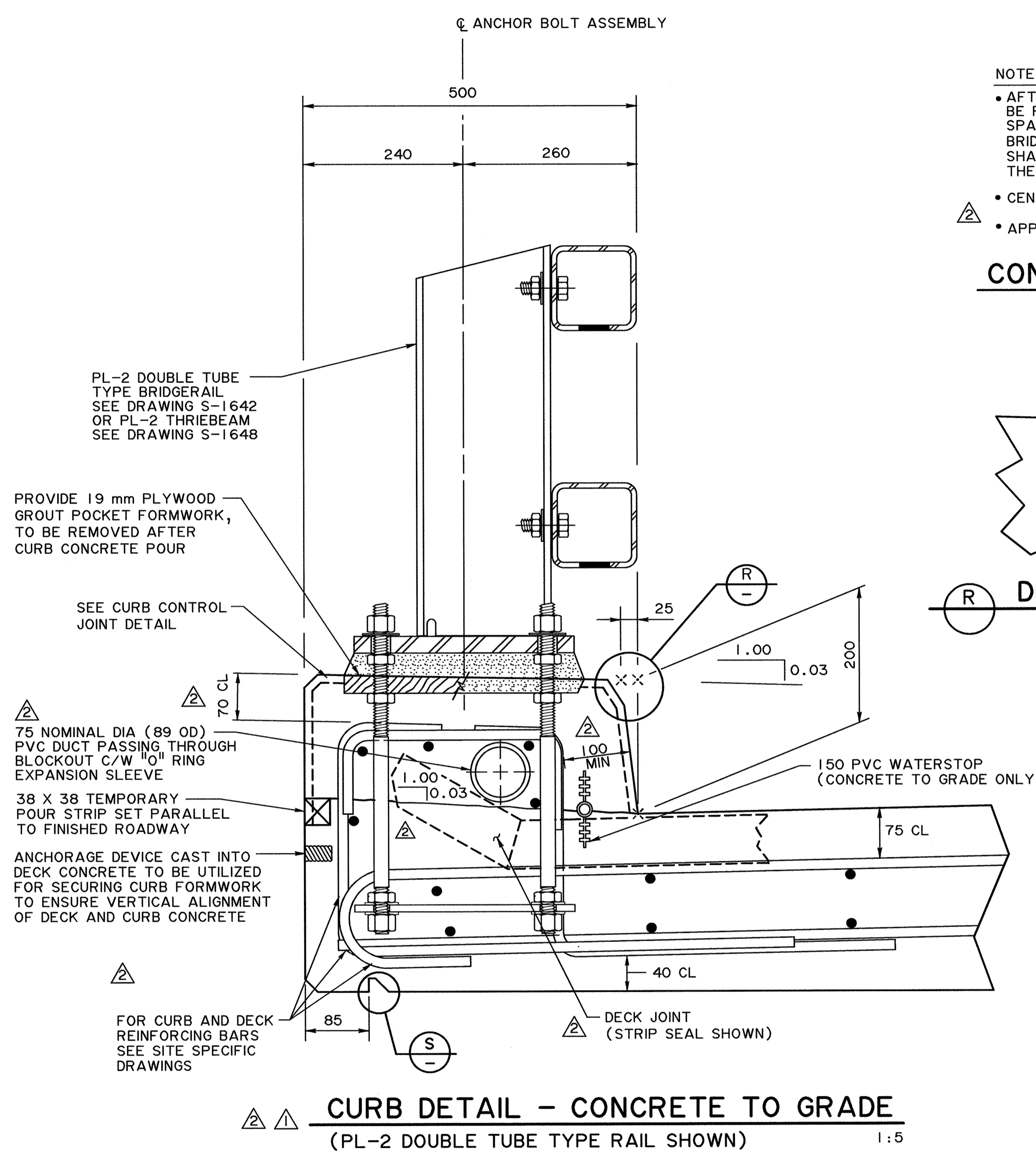
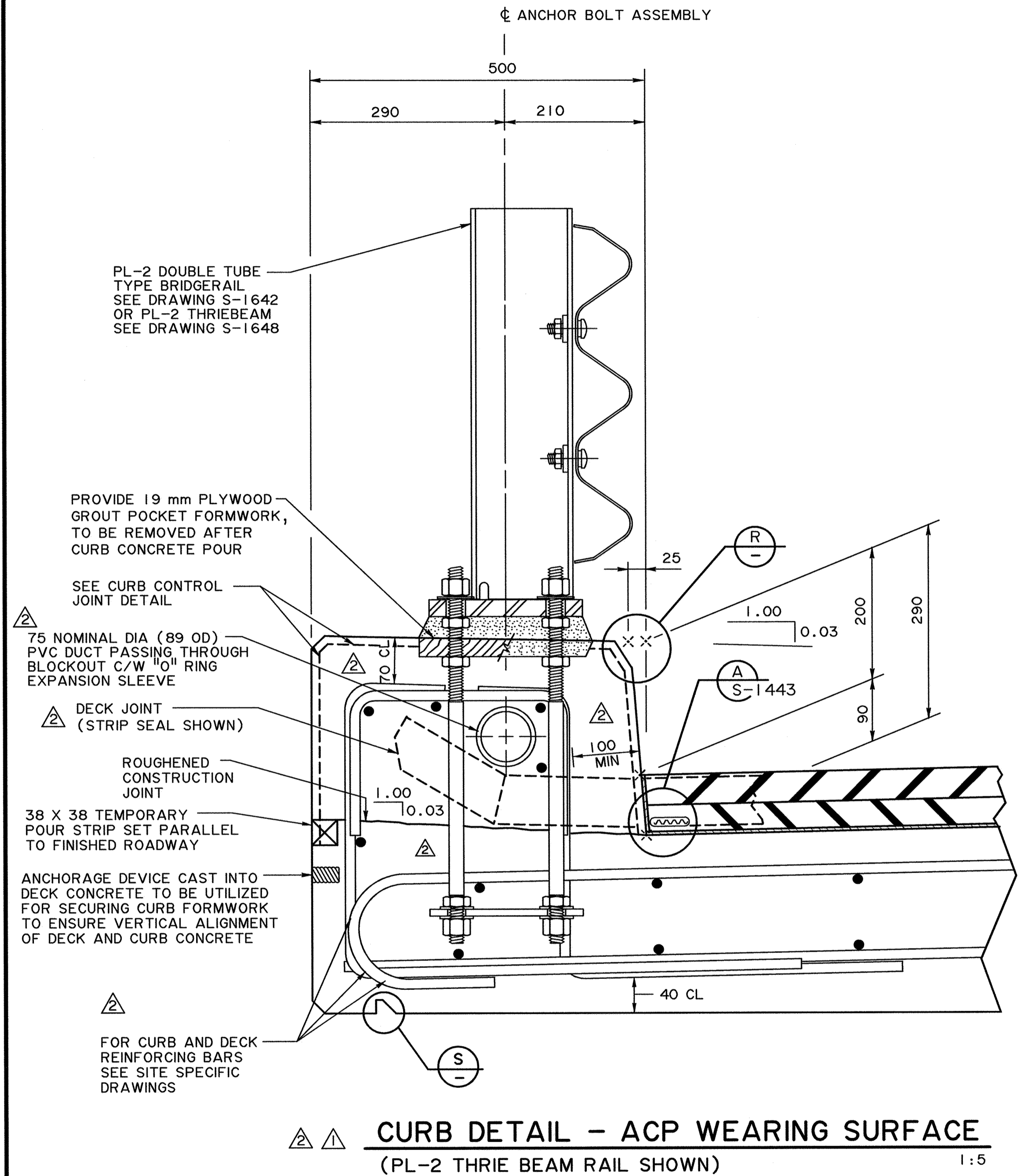
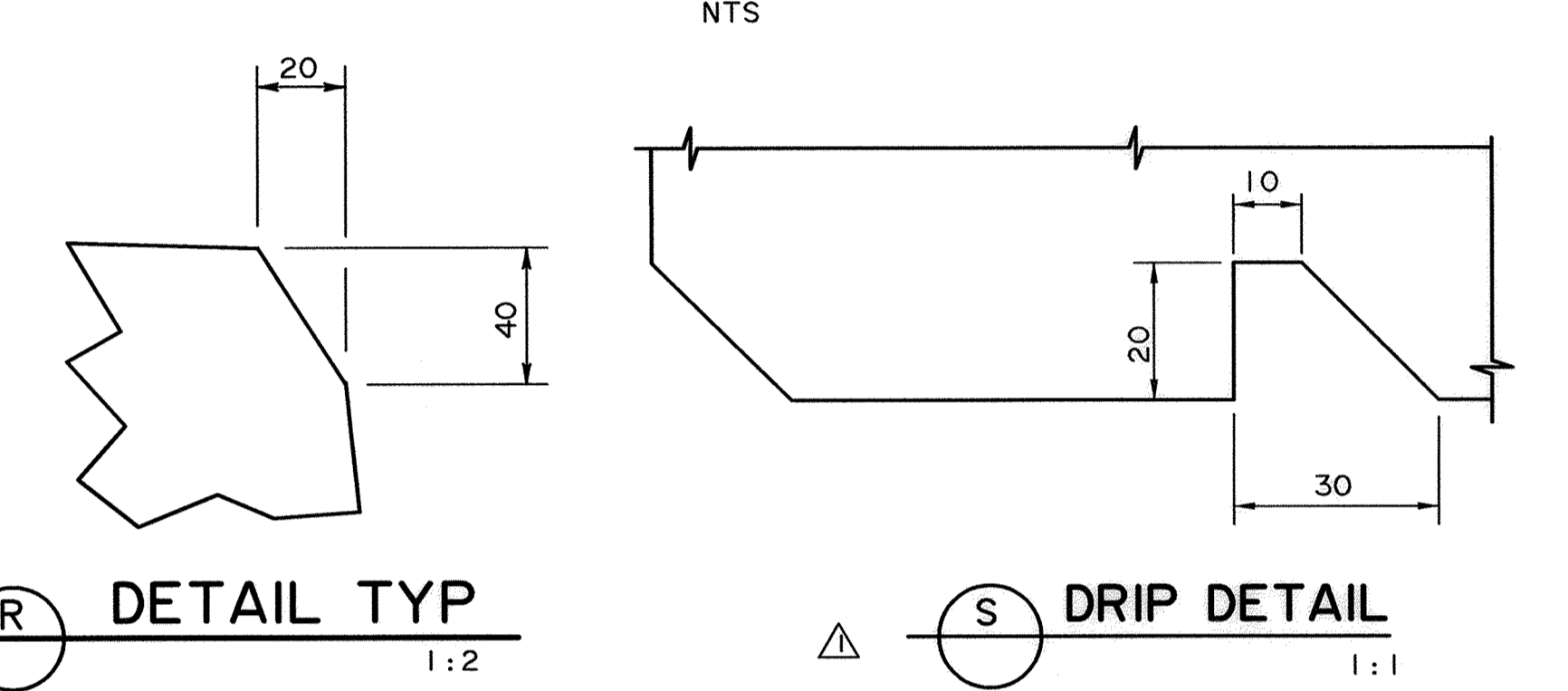


NOTE:

- AFTER THE ENTIRE DECK HAS BEEN CAST, THE CONCRETE BARRIER SHALL BE PLACED CONTINUOUSLY WITH FORMED CONTROL JOINTS AT 3000 mm SPACING. LAST BARRIER SECTION CAN BE LONGER THAN 3000 mm AT BRIDGE ENDS. AT CONTROL JOINTS, LONGITUDINAL REINFORCEMENT SHALL BE DISCONTINUOUS AND HAVE 50 mm CONCRETE COVER FROM THE CENTERLINE OF THE JOINTS.
- CENTER CONTROL JOINTS BETWEEN POSTS
- APPLY JOINT SEALANT AND ALLOW TO CURE PRIOR TO PLACING WATERPROOFING AND ACP

CONTROL JOINT DETAIL



GENERAL NOTES

- ALL DIMENSIONS ARE IN MILLIMETRES UNLESS NOTED OTHERWISE.
- ALL REINFORCING STEEL SHALL HAVE 50mm CLEAR COVER UNLESS NOTED OTHERWISE.
- ALL EXPOSED CORNERS SHALL HAVE A 20 mm CHAMFER.
- FOR CONCRETE FINISHES AND SEALERS SEE LATEST VERSION OF SPECIFICATIONS FOR BRIDGE CONSTRUCTION.

THIS DRAWING CONTAINS STANDARD DETAILS FOR USE BY DESIGN CONSULTANTS, HOWEVER, THE DRAWING IS NOT INTENDED TO BE DIRECTLY INCORPORATED INTO THE CONTRACT SET. APPLICABLE SITE SPECIFIC DETAILS ARE TO BE INCORPORATED AND REPRODUCED IN THE APPROPRIATE CONTRACT DRAWINGS.

RECOMMENDED DIRECTOR BRIDGE ENGINEERING		ORIGINAL SIGNED BY TOM LOO	
APPROVED EXECUTIVE DIRECTOR TECHNICAL STANDARDS BRANCH		ORIGINAL SIGNED BY ALLAN KWAN	
DESIGNER	RY	CHECKER	TJS
DATE	REVISIONS		BY
2012-01-18	CONTROL JOINT, REBAR COVER & PVC DUCT LOCATION		CM
2009-06-23	DRIP DETAIL ADDED		CM
DATE FEB 15, 2007		DRAWING S-1680-07	

WS 2012-01-18 S168007-RV2.DGN