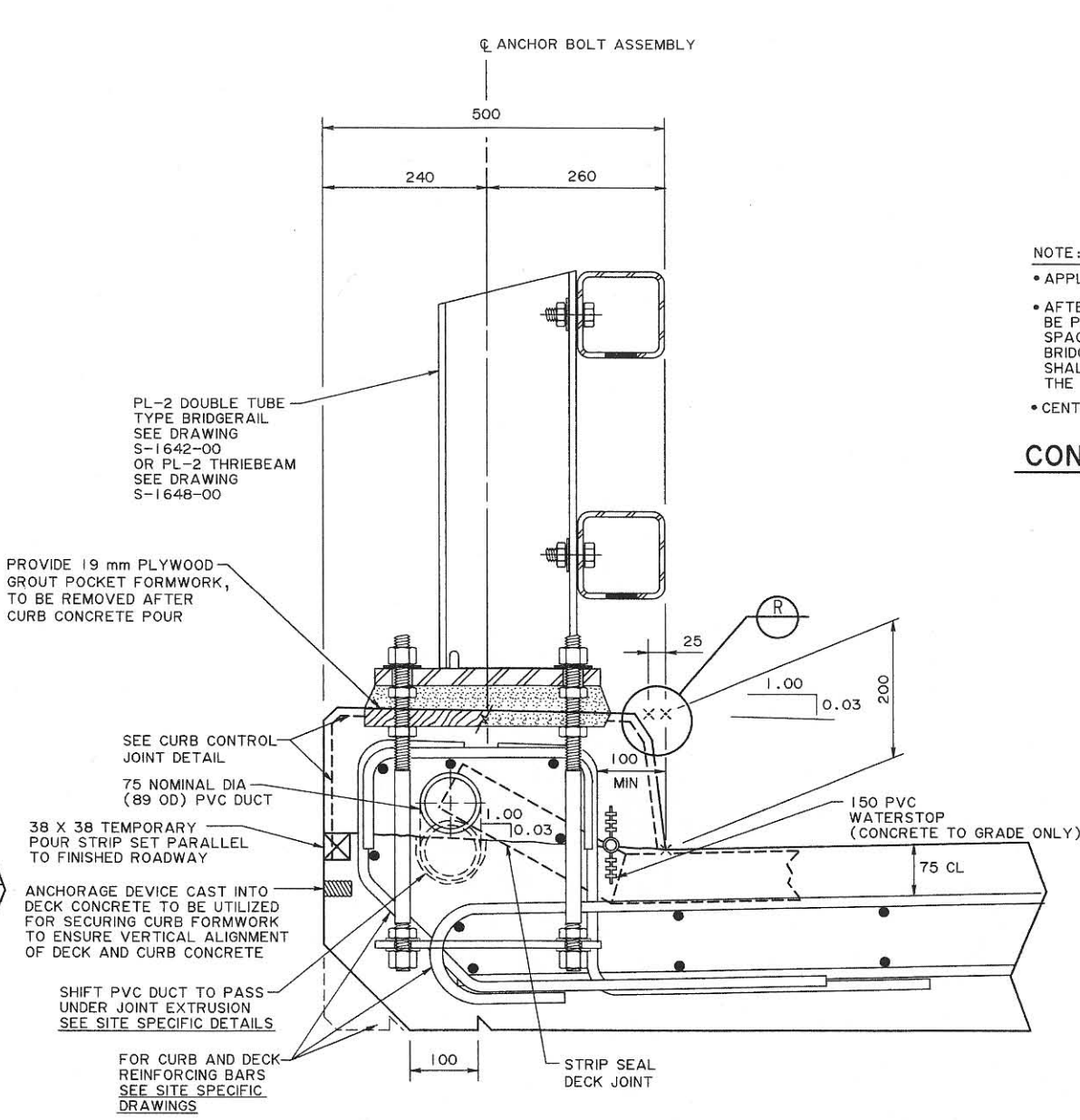
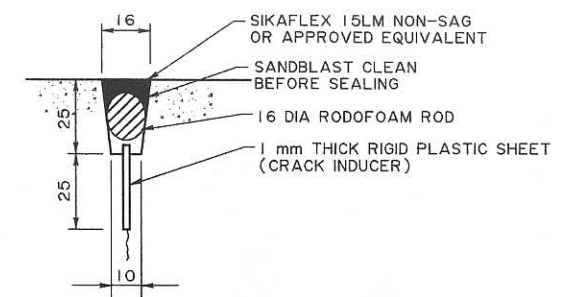


CURB DETAIL - ACP WEARING SURFACE
(PL-2 THRIE BEAM RAIL SHOWN) 1:5



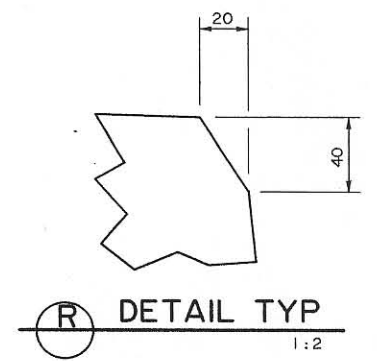
CURB DETAIL - CONCRETE TO GRADE
(PL-2 DOUBLE TUBE TYPE RAIL SHOWN) 1:5



NOTE:

- APPLY JOINT SEALANT PRIOR TO PLACING ACP.
- AFTER THE ENTIRE DECK HAS BEEN CAST, THE CONCRETE BARRIER SHALL BE PLACED CONTINUOUSLY WITH FORMED CONTROL JOINTS AT 3000 mm SPACING. LAST BARRIER SECTION CAN BE LONGER THAN 3000 mm AT BRIDGE ENDS. AT CONTROL JOINTS, LONGITUDINAL REINFORCEMENT SHALL BE DISCONTINUOUS AND HAVE 50 mm CONCRETE COVER FROM THE CENTERLINE OF THE JOINTS.
- CENTERED BETWEEN POSTS.

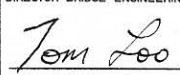
CONTROL JOINT DETAIL
NTS



GENERAL NOTES

- ALL DIMENSIONS ARE IN MILLIMETRES UNLESS NOTED OTHERWISE.
- ALL REINFORCING STEEL SHALL HAVE 50mm CLEAR COVER UNLESS NOTED OTHERWISE.
- ALL EXPOSED CORNERS SHALL HAVE A 20 mm CHAMFER.
- FOR CONCRETE FINISHES AND SEALERS SEE LATEST VERSION OF SPECIFICATIONS FOR BRIDGE CONSTRUCTION.

THIS DRAWING CONTAINS STANDARD DETAILS FOR USE BY DESIGN CONSULTANTS, HOWEVER, THE DRAWING IS NOT INTENDED TO BE DIRECTLY INCORPORATED INTO THE CONTRACT SET. APPLICABLE SITE SPECIFIC DETAILS ARE TO BE INCORPORATED AND REPRODUCED IN THE APPROPRIATE CONTRACT DRAWINGS.

RECOMMENDED DIRECTOR BRIDGE ENGINEERING	 APPROVED EXECUTIVE DIRECTOR TECHNICAL STANDARDS BRANCH		
DESIGNER	RY	CHECKER	T.J.S.F.
DATE	February 15, 2007	DATE	February 15, 2007

Alberta INFRASTRUCTURE AND TRANSPORTATION

STANDARD CURB DETAILS

DATE 2007-02-14 SHEET 1 OF 1 DRAWING S-1680-07