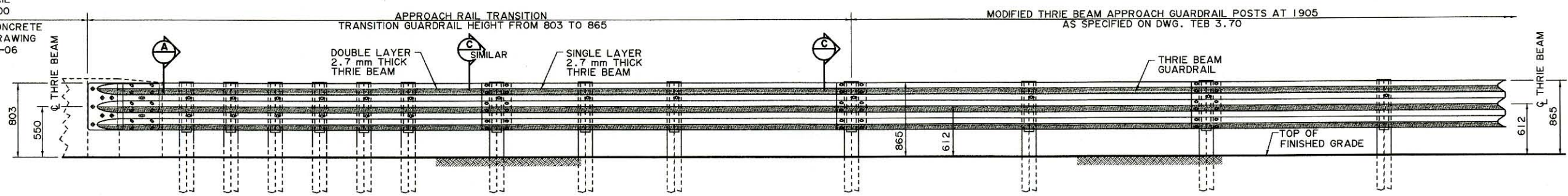


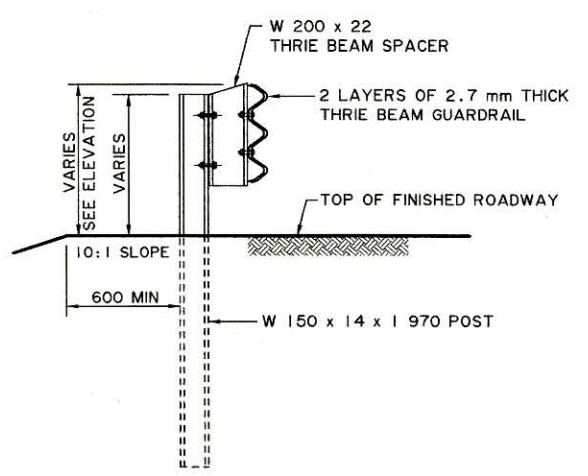
APPROACH RAIL TRANSITION PLAN
1:25

FOR CONNECTION TO PL2 DOUBLE TUBE BRIDGERAIL SEE DRAWING S-1643-00

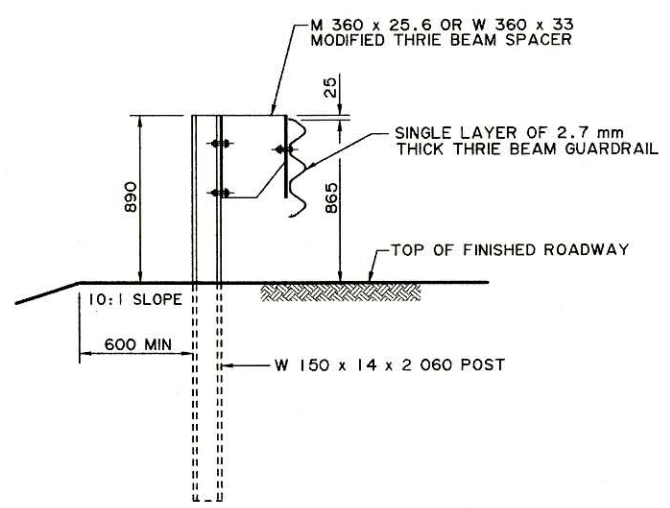
FOR CONNECTION TO CONCRETE BRIDGE BARRIER SEE DRAWING S-1651-00 OR S-1705-06



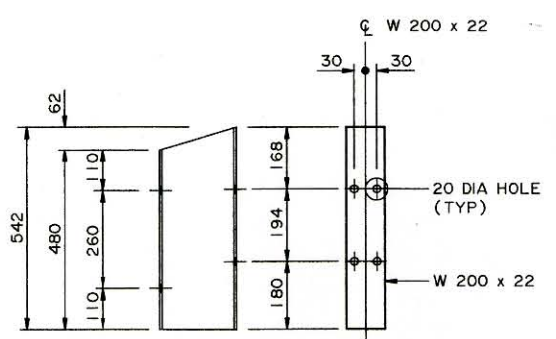
APPROACH RAIL TRANSITION ELEVATION
1:25



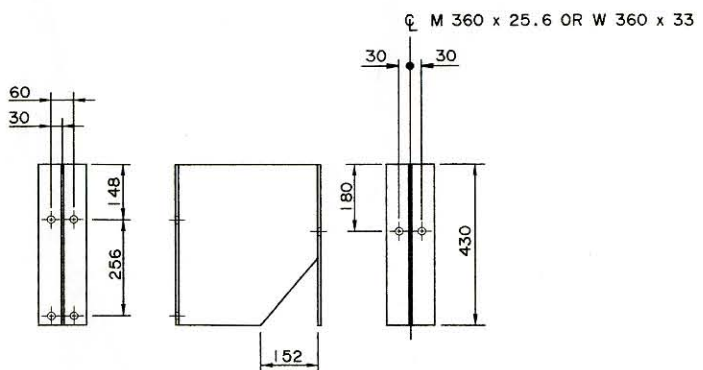
A SECTION
FOR REMAINING DETAILS SEE SECTION B ON DRAWING S-1643-00
1:20



C SECTION
FOR REMAINING DETAILS SEE DRAWING TEB 3.70
1:20



THRIE BEAM SPACER DETAIL
1:10



MODIFIED THRIE BEAM SPACER DETAIL
1:10

GENERAL NOTES

- ALL DIMENSIONS ARE IN MILLIMETRES UNLESS NOTED OTHERWISE.
- APPROACH RAIL TRANSITION SHALL CONFORM TO THE CURRENT REQUIREMENTS OF THE SPECIFICATIONS FOR BRIDGE CONSTRUCTION SECTION 14 - GUARDRAIL.
- ALL PLATE STEEL AND STRUCTURAL SHAPES SHALL CONFORM TO CSA G40.21 GRADE 300W, OR ASTM A36.
- ALL THRIE BEAM GUARDRAIL SHALL HAVE A MINIMUM YIELD STRENGTH OF 345 MPa.
- ALL MATERIALS SHALL BE HOT-DIP GALVANIZED AFTER FABRICATION IN ACCORDANCE WITH CSA G164 UNLESS NOTED OTHERWISE.
- LAP GUARDRAIL IN DIRECTION OF TRAFFIC TO PREVENT SNAG.
- ALL APPROACH RAIL AND TRANSITION RAIL POSTS SHALL BE VERTICAL.
- LINE AND ELEVATION OF RAIL SHALL BE SET BY INSTRUMENT.
- ANY GALVANIZED MATERIAL CUT OR DAMAGED IN THE FIELD SHALL BE TOUCHED UP WITH TWO COATS OF ZINC RICH PAINT.

RECOMMENDED DIRECTOR BRIDGE ENGINEERING	<i>Tom Leo</i>		
APPROVED EXECUTIVE DIRECTOR TECHNICAL STANDARDS BRANCH	<i>Moh Sabi</i>		
DESIGNER	CM CM	CHECKER	<i>Jay Fry</i>
DATE		REVISIONS	DATE 2007-07-24

Alberta INFRASTRUCTURE AND TRANSPORTATION

BRIDGERAIL TO MODIFIED THRIE BEAM TRANSITION DETAILS

DEPARTMENT BAR CODE:

DATE: 2007-07-24 | SHEET: 1 of 1 | DRAWING: S-1681-07

F875723

S:\681\07.DWG PLOTTED 2007-07-24