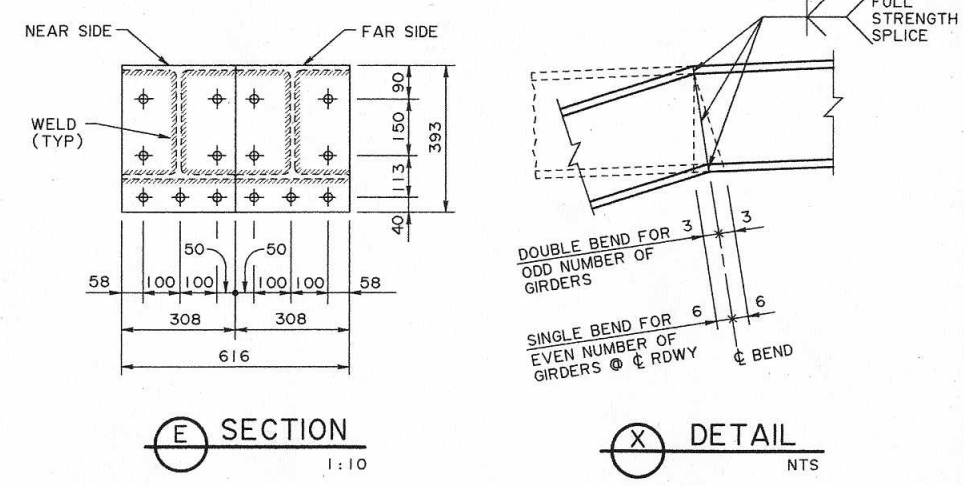
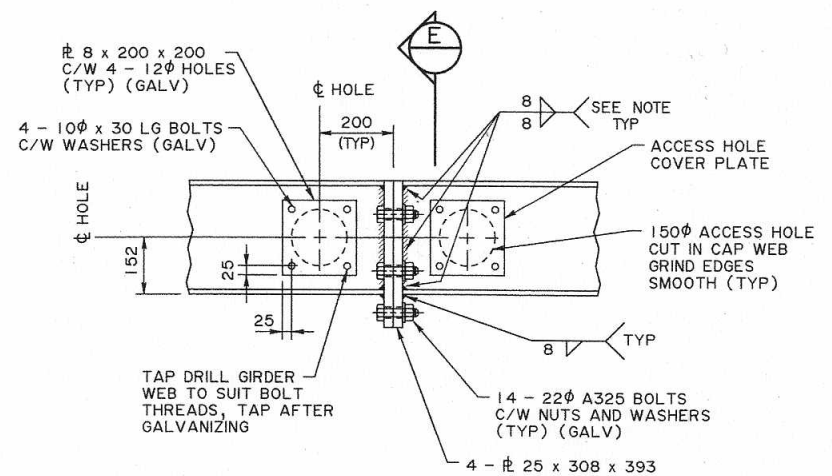
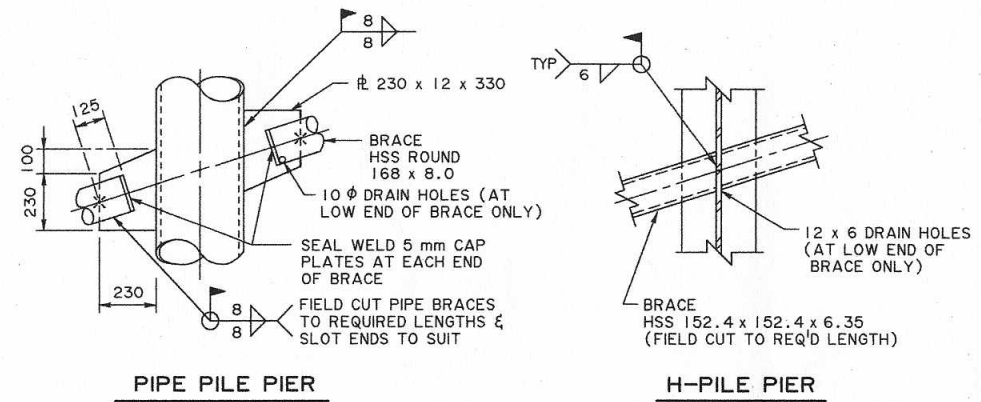
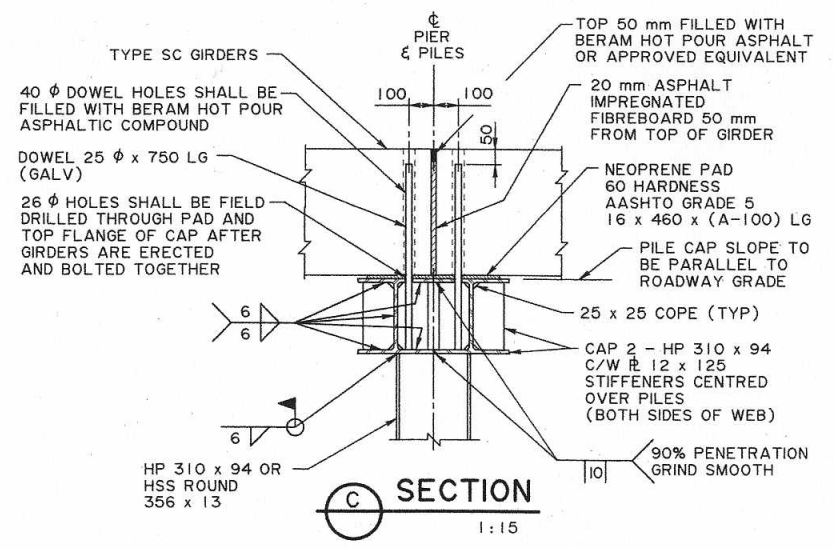
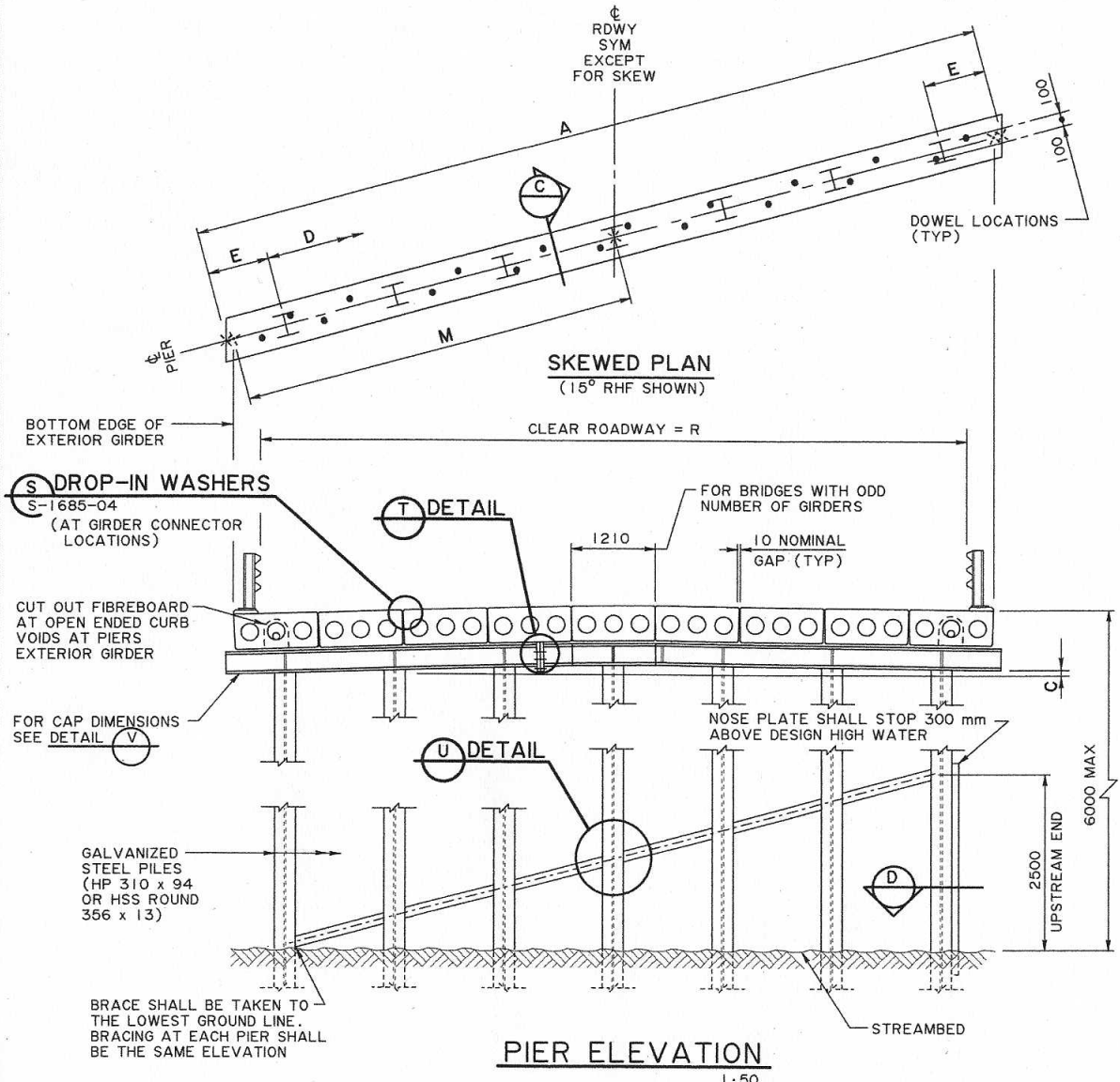
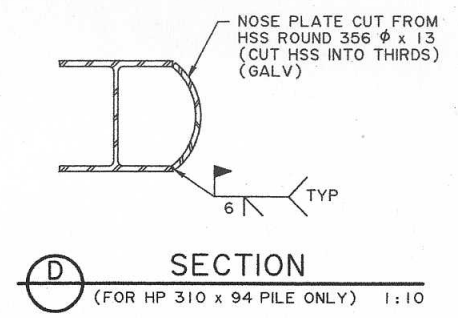


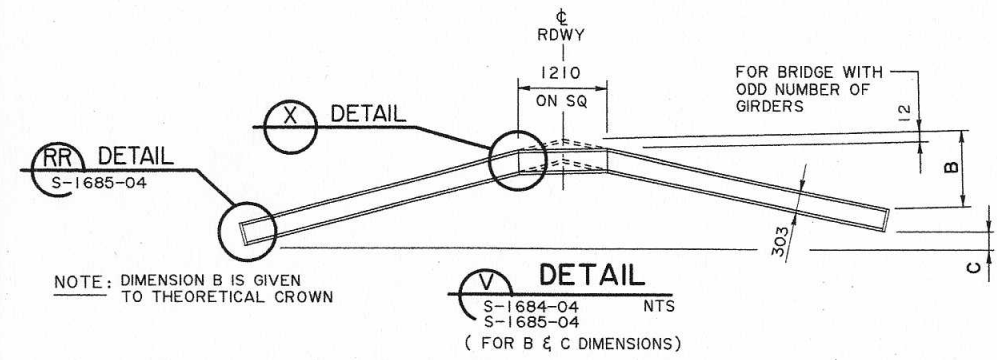
DATA FOR STANDARD SC PRECAST GIRDER BRIDGES - PIERS

CLEAR ROADWAY (GIRDERS / SPAN) R	8 940 (8)				10 160 (9)				11 370 (10)				12 590 (11)				13 810 (12)				15 020 (13)				
	0°	15°	30°	45°	0°	15°	30°	45°	0°	15°	30°	45°	0°	15°	30°	45°	0°	15°	30°	45°	0°	15°	30°	45°	
GENERAL																									
OVERALL LENGTH	A	9 920	10 270	11 455	14 029	11 140	11 533	12 863	15 754	12 350	12 786	14 261	17 466	13 570	14 049	15 669	19 191	14 790	15 312	17 078	20 916	16 000	16 564	18 475	22 627
CROWN	B	99	99	99	99	111	111	111	111	124	124	124	124	136	136	136	136	148	148	148	148	160	160	160	160
DIFFERENTIAL FOR ROADWAY GRADE OF	1% C	0	27	57	99	0	30	64	111	0	33	71	124	0	36	78	136	0	40	85	148	0	43	92	160
	2% C	0	53	115	198	0	60	129	223	0	66	143	247	0	73	157	271	0	79	171	296	0	86	185	320
	3% C	0	80	172	298	0	90	193	334	0	99	214	371	0	109	235	407	0	119	256	444	0	129	277	480
PILES																									
NUMBER		6	6	6	6	7	7	7	7	8	8	8	8	9	9	9	9	9	9	9	9	10	10	10	10
SPACING	D	1 642	1 700	1 896	2 322	1 572	1 627	1 815	2 223	1 520	1 574	1 755	2 150	1 482	1 534	1 711	2 096	1 635	1 693	1 888	2 312	1 588	1 644	1 834	2 246
END DISTANCES	E	855	885	987	1 209	855	885	987	1 209	855	885	987	1 209	855	885	987	1 209	855	885	987	1 209	855	885	987	1 209
NUMBER OF DOWELS PER LINE		8	8	8	8	9	9	9	9	10	10	10	10	11	11	11	11	12	12	12	12	13	13	13	13
CURB GIRDER LOCATION FROM BRIDGE	M	4 859	5 030	5 611	6 872	5 467	5 660	6 313	7 732	6 075	6 289	7 015	8 591	6 683	6 919	7 717	9 451	7 291	7 548	8 419	10 311	7 899	8 178	9 121	11 171



NOTE: PLATES TO BE WELDED TO HP SECTIONS PRIOR TO WELDING HP SECTIONS TOGETHER. FIT PLATES TO BEAR

T DETAIL - OPTIONAL FIELD SPLICE 1:10
S-1684-04
S-1685-04



SUPERSEDED BY S-1684-04 REVISION 2, 2007-02-14

	PERMIT TO PRACTICE MOST ENGINEERING (2001) LTD. Signature: <i>[Signature]</i> Date: Dec 2, 2004 PERMIT NUMBER: P 5778 The Association of Professional Engineers, Geologists and Geophysicists of Alberta	DESIGNER DATE: Dec 2, 2004	CHECKER DATE: Dec 2, 2004	RECOMMENDED DIRECTOR BRIDGE ENGINEERING 	APPROVED EXECUTIVE DIRECTOR TECHNICAL STANDARDS BRANCH 	AT BAR CODE DATE: 2004-11-29 SHEET: 2 OF 4 DRAWING: S-1684-04
	REDRAWN FROM S-1603-94 & S-1604-94 (REV 3) TO COMPLY WITH CAN/CSA-S6-00 & NEW CURB GIRDERS	WP DATE: Jan 7, 2005				