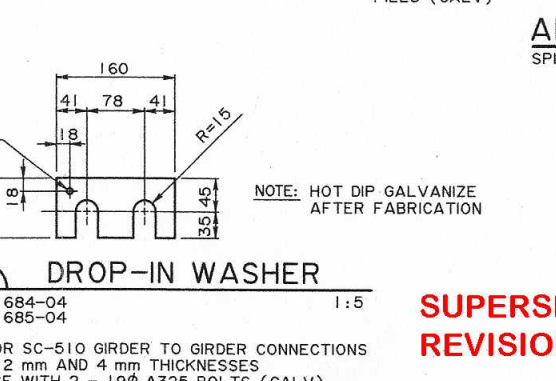
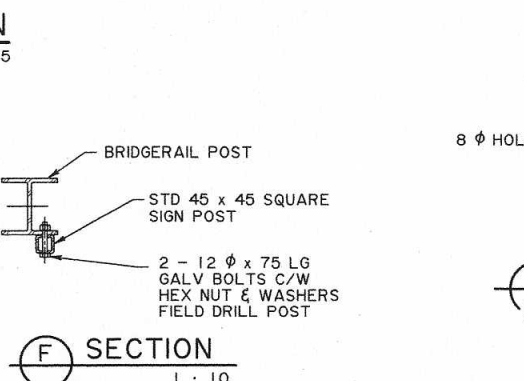
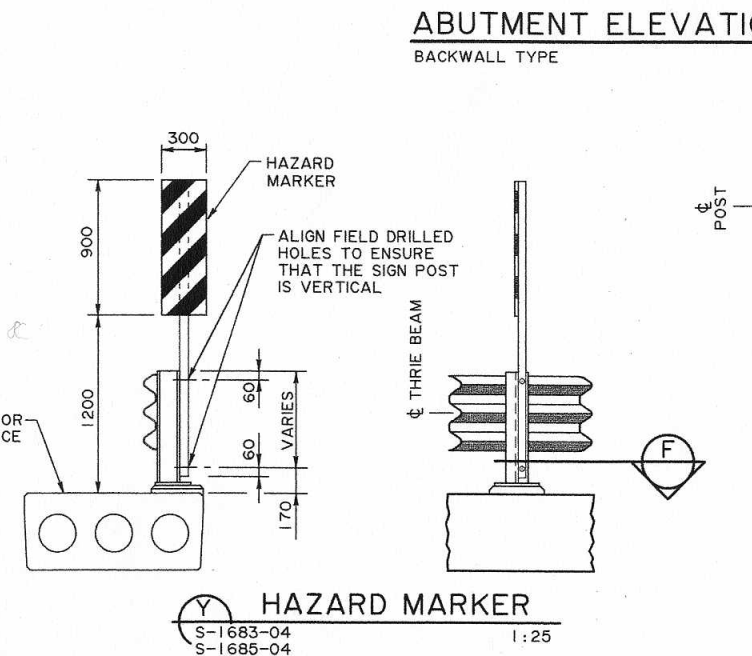
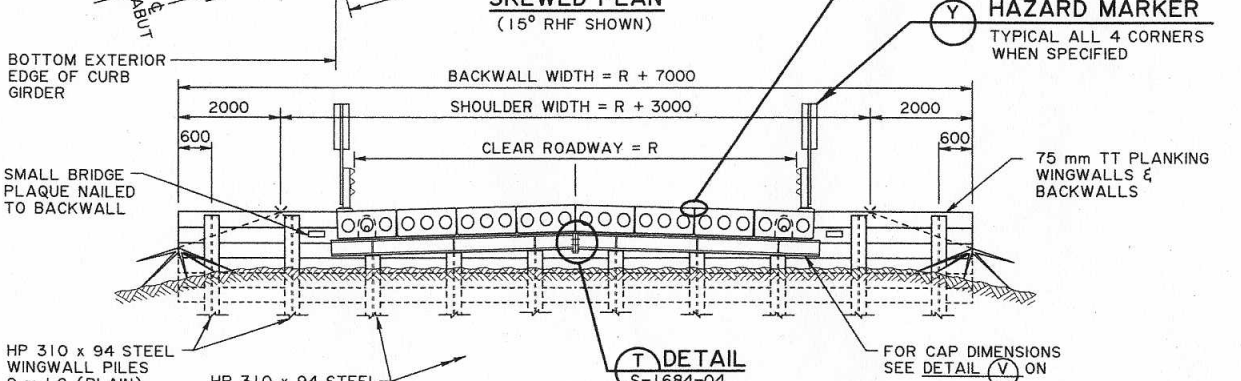
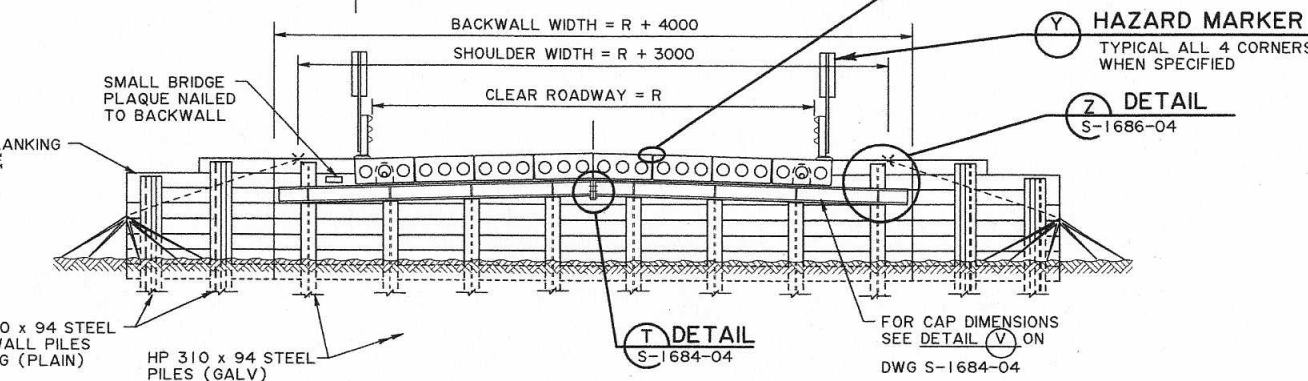
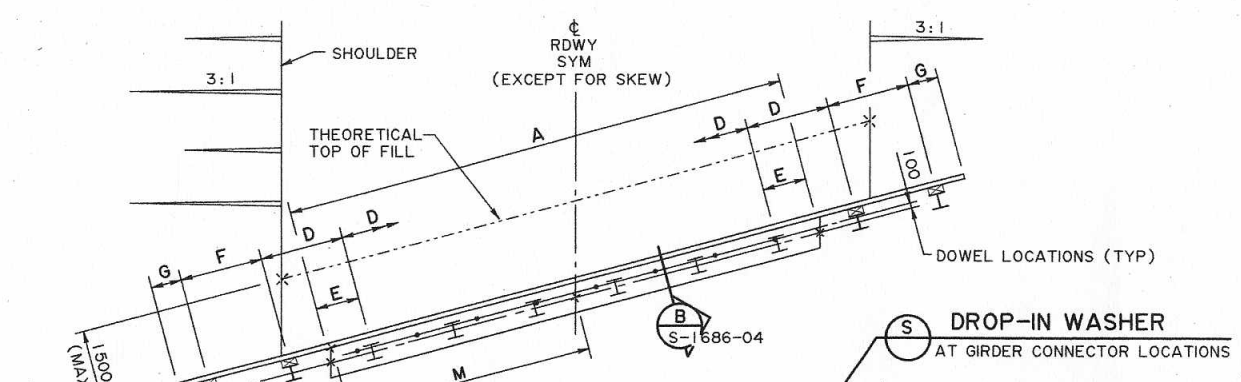
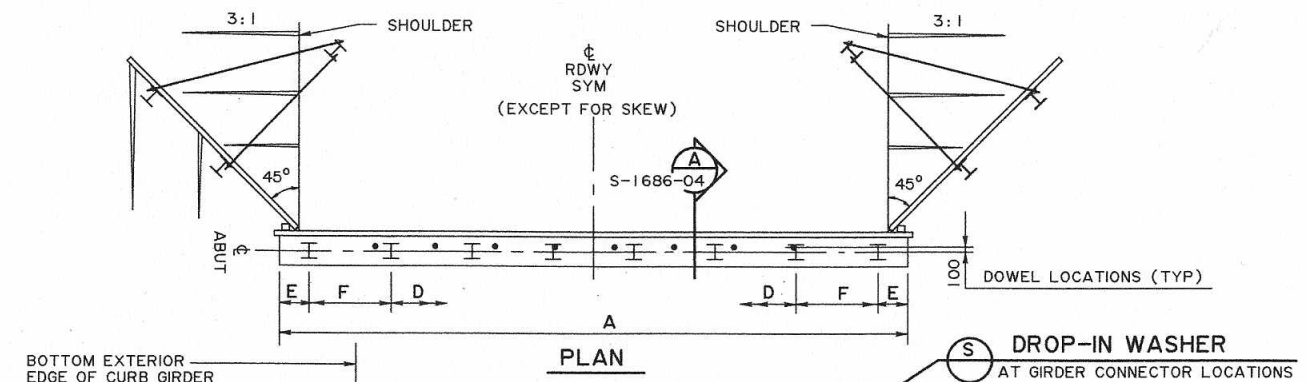


DATA FOR STANDARD SC PRECAST GIRDER BRIDGES - PIERS

CLEAR ROADWAY (GIRDERS / SPAN)	R	8 940 (8)					10 160 (9)					11 370 (10)					12 590 (11)					13 810 (12)					15 020 (13)				
		ABUTMENT TYPE	BACKWALL	SPILL THROUGH			BACKWALL	SPILL THROUGH			BACKWALL	SPILL THROUGH			BACKWALL	SPILL THROUGH			BACKWALL	SPILL THROUGH			BACKWALL	SPILL THROUGH							
GENERAL	SKUEW	0°	0°	15°	30°	45°	0°	0°	15°	30°	45°	0°	0°	15°	30°	45°	0°	0°	15°	30°	45°	0°	0°	15°	30°	45°	0°	0°	15°	30°	45°
OVERALL LENGTH	A	12 740	9 920	10 270	11 455	14 029	13 960	11 140	11 533	12 863	15 754	15 170	12 350	12 786	14 261	17 466	16 390	13 570	14 049	15 669	19 191	17 610	14 790	15 312	17 078	20 916	18 820	16 000	16 564	18 475	22 627
CROWN	B	127	99	99	99	99	140	111	111	111	111	152	124	124	124	164	136	136	136	136	176	148	148	148	148	188	160	160	160	160	
DIFFERENTIAL FOR ROADWAY GRADE OF	1% C	0	0	27	57	99	0	0	30	64	111	0	0	33	71	124	0	0	36	78	136	0	0	40	85	148	0	0	43	92	160
	2% C	0	0	53	115	198	0	0	60	129	223	0	0	66	143	247	0	0	73	157	271	0	0	79	171	296	0	0	86	185	320
	3% C	0	0	80	172	298	0	0	90	193	334	0	0	99	214	371	0	0	109	235	407	0	0	119	256	444	0	0	129	277	480
PILES	NUMBER - LOAD BEARING	6	6	6	6	6	7	7	7	7	7	8	8	8	8	8	9	9	9	9	9	9	9	9	9	10	10	10	10	10	
SPACING	D	1 642	1 642	1 700	1 896	2 322	1 572	1 572	1 627	1 815	2 223	1 520	1 520	1 574	1 755	2 150	1 482	1 482	1 534	1 711	2 096	1 635	1 635	1 693	1 888	2 312	1 588	1 588	1 644	1 834	2 246
END DISTANCES	E	600	855	885	987	1 209	600	855	885	987	1 209	600	855	885	987	1 209	600	855	885	987	1 209	600	855	885	987	1 209	600	855	885	987	1 209
WINGWALL PILE LOCATION	F	1 665	1 623	1 680	1 874	2 295	1 664	1 693	1 753	1 955	2 394	1 665	1 745	1 807	2 015	2 468	1 667	1 783	1 846	2 059	2 522	1 665	1 630	1 688	1 882	2 305	1 664	1 677	1 736	1 936	2 372
WINGWALL PROJECTION	G	N/A	600	621	693	849	N/A	600	621	693	849	N/A	600	621	693	849	N/A	600	621	693	849	N/A	600	621	693	849	N/A	600	621	693	849
NUMBER OF DOWELS PER LINE		8	8	8	8	8	9	9	9	9	9	10	10	10	10	10	11	11	11	11	11	12	12	12	12	13	13	13	13	13	
CURB GIRDER LOCATION FROM ϕ BRIDGE	M	4 859	4 859	5 030	5 611	6 872	5 467	5 467	5 660	6 313	7 732	6 075	6 075	6 289	7 015	8 591	6 683	6 683	6 919	7 717	9 451	7 291	7 291	7 548	8 419	10 311	7 899	7 899	8 178	9 121	11 171



	PERMIT TO PRACTICE MOST ENGINEERING (2001) LTD. Signature: <i>[Signature]</i> Date: Dec 2, 2004 PERMIT NUMBER: P 5778 The Association of Professional Engineers, Geologists and Geophysicists of Alberta.	DESIGNER 	CHECKER 	RECOMMENDED DIRECTOR BRIDGE ENGINEERING 	APPROVED EXECUTIVE DIRECTOR TECHNICAL STANDARDS BRANCH 	AT BAR CODE	DATE 2004-11-29	SHEET 3 of 4	DRAWING S-1685-04
	2004-11-29 REDRAWN FROM S-1603-94 & S-1604-94 (REV 3) TO COMPLY WITH CAN/CSA-S6-00 & NEW CURB GIRDERS	REV DATE REVISIONS	BY DATE Jan 7, 2005	Alberta TRANSPORTATION SC PRECAST GIRDER BRIDGES WITH STEEL SUBSTRUCTURES SHEET 3					

**SUPERSEDED BY S-1685-04
REVISION 2, 2007-02-14**