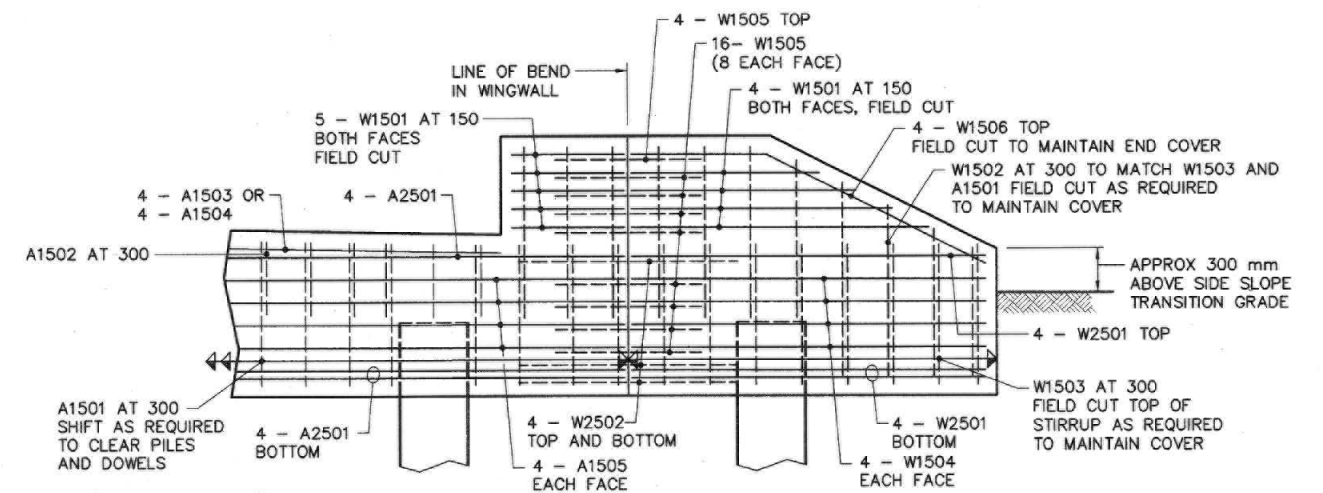


NOTES FOR THE DOWELS:  
 PROVIDE 38 mm DIA x 400 DEEP HOLES FOR THE DOWELS. HOLES SHALL BE DRILLED IN THE ABUTMENT SEAT WITHOUT DAMAGING THE REINFORCING STEEL AFTER THE GIRDERS HAVE BEEN ERECTED. SET DOWELS IN ABUTMENT SEAT AND GIRDER WITH SIKA 212 FLOWABLE GROUT OR APPROVED EQUIVALENT. PRE-WET HOLES AS PER SIKA 212 PRODUCT DATA SHEET.



NOTE:  
 FOR ABUTMENT VERTICAL DIMENSIONING DETAIL, SEE DWG S-1696-05.

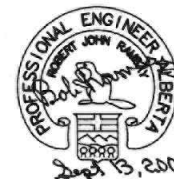
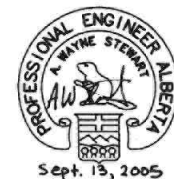
**ABUTMENTS**  
 1:50

**ELEVATION**  
 (ON SQUARE)

**TYPICAL WINGWALL ELEVATION**  
 1:25

UMA | AECOM

PERMIT TO PRACTICE  
 UMA ENGINEERING LTD.  
 Signature: [Signature]  
 Date: Sept 13, 2005  
 PERMIT NUMBER: P329  
 The Association of Professional Engineers,  
 Geologists and Geophysicists of Alberta



DESIGNER	CHECKER	RECOMMENDED	DATE	REVISIONS	BY
		DIRECTOR BRIDGE ENGINEERING	2005.09.13	DRAIN DETAILS	SP
		[Signature]			
		APPROVED			
		EXECUTIVE DIRECTOR			
		TECHNICAL STANDARDS BRANCH			
		[Signature]			
		DATE			

Albarta INFRASTRUCTURE AND TRANSPORTATION

SCC PRECAST GIRDER BRIDGES  
 WITH CAST-IN-PLACE  
 CONCRETE SUBSTRUCTURES - SHT 2

DEPARTMENT BAR CODE	DATE	SHEET	DRAWING
	2005-08-09	2 of 4	S-1697-05