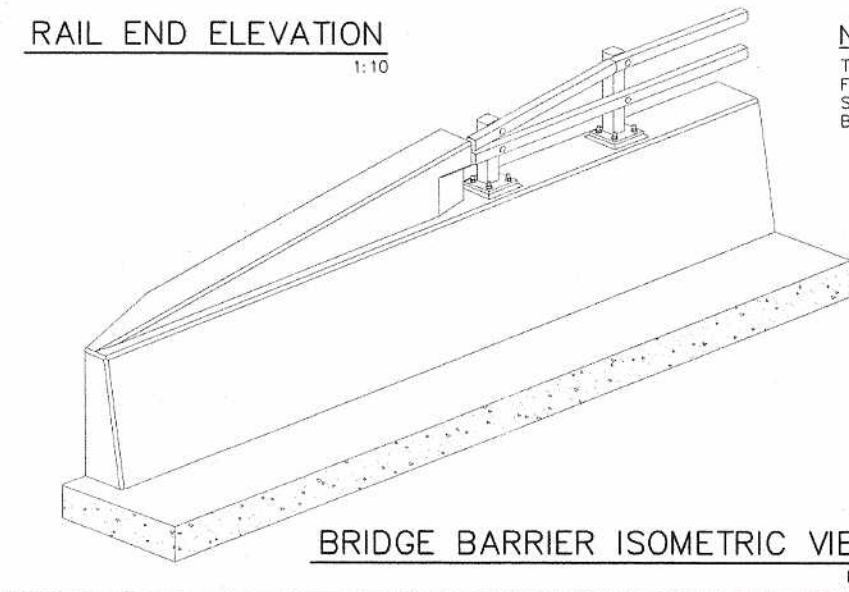
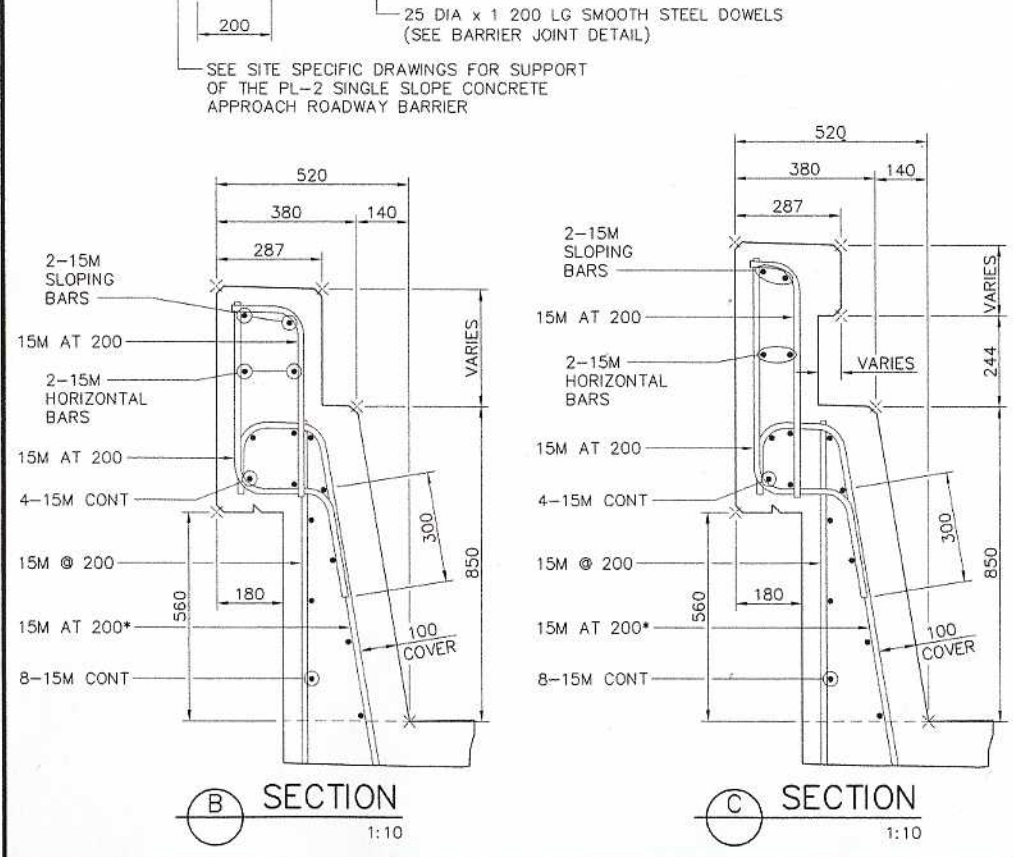
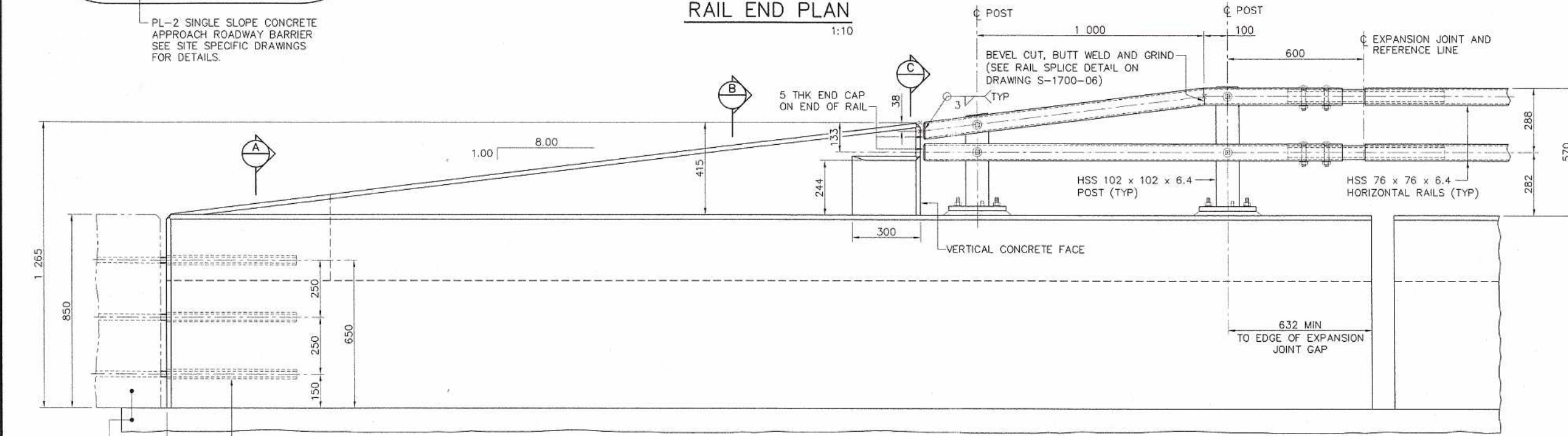
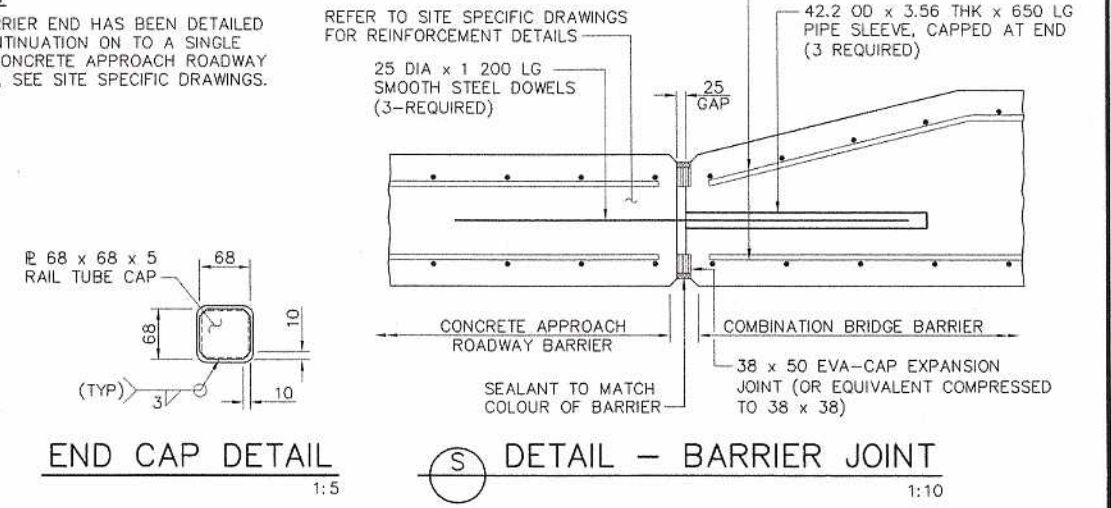


- ### GENERAL NOTES
1. ALL CONCRETE SHALL HAVE A MINIMUM 28 DAY COMPRESSIVE STRENGTH OF 45 MPa.
 2. ALL CONCRETE CORNERS SHALL HAVE A 20 mm CHAMFER OR FILLET UNLESS NOTED OTHERWISE.
 3. ALL REINFORCING STEEL SHALL HAVE A MINIMUM 50 mm CLEAR COVER UNLESS NOTED OTHERWISE.
 4. ALL REINFORCING STEEL SHALL BE EPOXY COATED AND CONFORM TO CAN/CSA-G30.18, GRADE 400.
 5. THE 8:1 SLOPE IS MEASURED WITH RESPECT TO THE ROADWAY GRADE.

PL-2 SINGLE SLOPE CONCRETE APPROACH ROADWAY BARRIER SEE SITE SPECIFIC DRAWINGS FOR DETAILS.



NOTE:
THE BARRIER END HAS BEEN DETAILED FOR CONTINUATION ON TO A SINGLE SLOPE CONCRETE APPROACH ROADWAY BARRIER, SEE SITE SPECIFIC DRAWINGS.



WORK THESE DRAWINGS TOGETHER: S-1700-06 AND S-1701-06

	PERMIT TO PRACTICE UMA ENGINEERING LTD. Signature: <i>J. Clever</i> Date: <i>May 8/06</i> PERMIT NUMBER: P329 The Association of Professional Engineers, Geologists and Geophysicists of Alberta.	DESIGNER 	CHECKER 	RECOMMENDED DIRECTOR BRIDGE ENGINEERING Signature: <i>Tom Leo</i>	APPROVED EXECUTIVE DIRECTOR TECHNICAL STANDARDS BRANCH Signature: <i>Allan...</i>	Alberta INFRASTRUCTURE AND TRANSPORTATION
	PL-2 COMBINATION BARRIER BARRIER END DETAILS	DATE: 4 MAY 2006 DATE: May 4, 2006	DATE: May 23, 2006	DATE: May 23, 2006	DATE: May 23, 2006	DATE: May 23, 2006
REV. DATE REVISIONS BY						DATE: 2005-11-01 SHEET: 2 of 2 DRAWING: S-1701-06