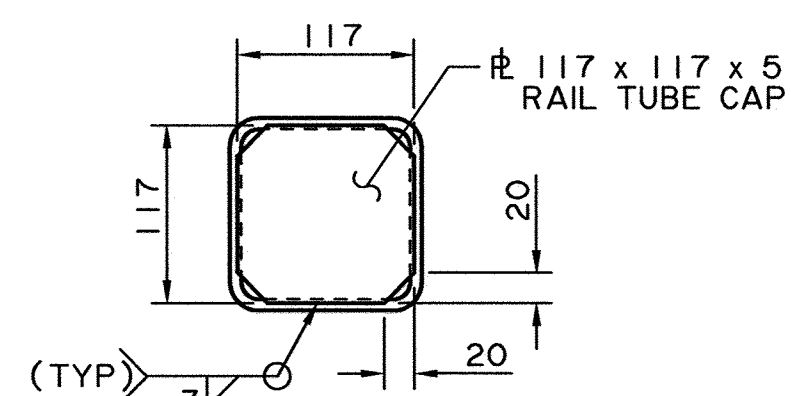
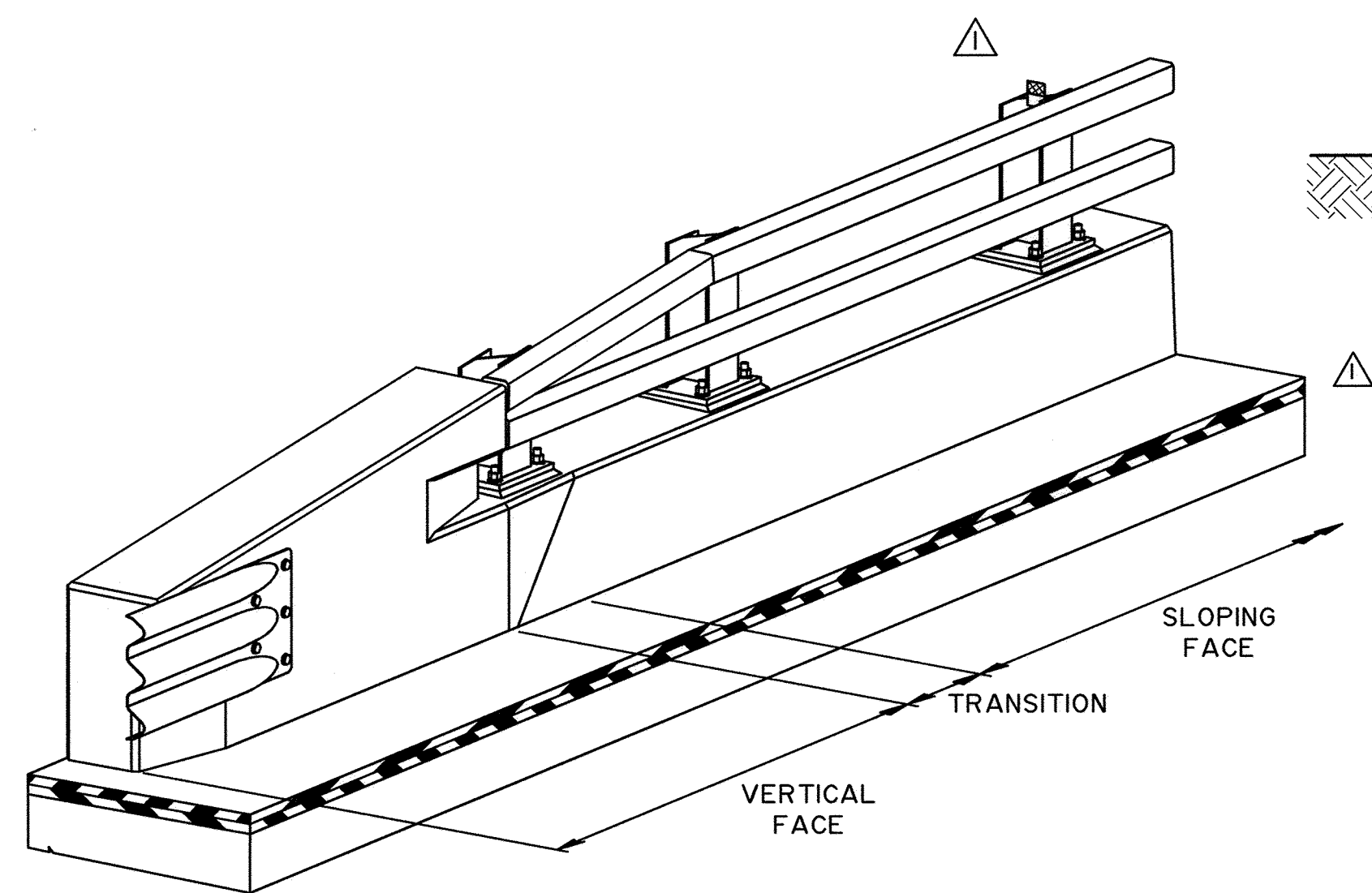


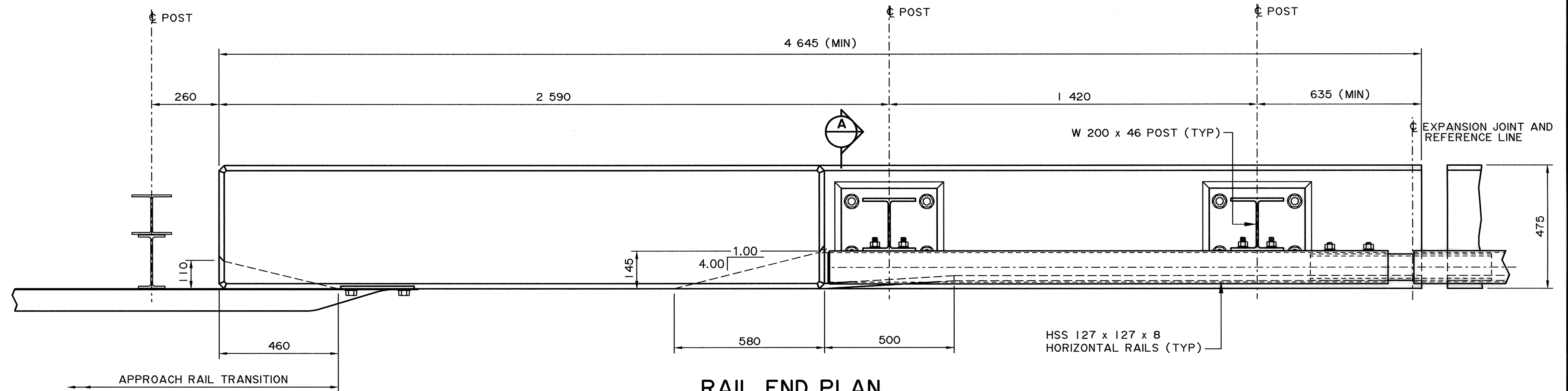
SECTION A
1:10



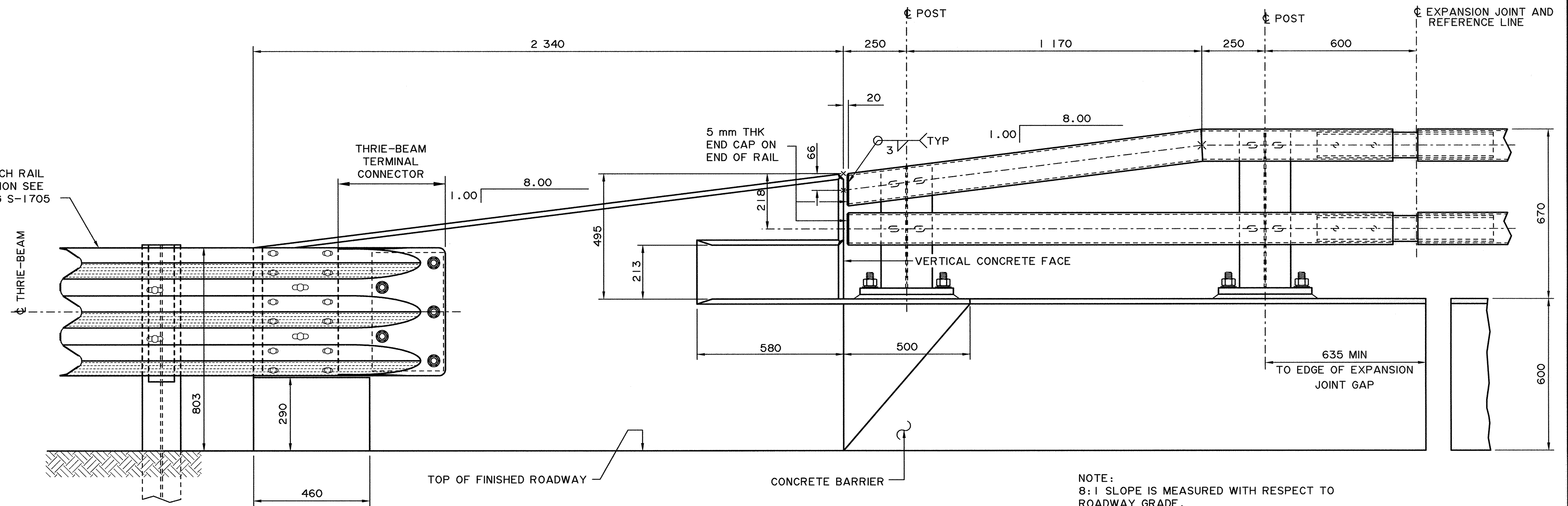
END CAP DETAIL
1:5



BRIDGE BARRIER ISOMETRIC VIEW
(EXPANSION JOINT NOT SHOWN)
N. T. S.



RAIL END PLAN
1:10



RAIL END ELEVATION
1:10

NOTE:
8:1 SLOPE IS MEASURED WITH RESPECT TO
ROADWAY GRADE.

• WORK THESE DRAWINGS TOGETHER: S-1702, S-1703, S-1704 AND S-1705

UMA AECOM	PERMIT TO PRACTICE UMA ENGINEERING LTD. PERMIT NUMBER: P 329 ORIGINAL STAMPED AND SIGNED BY: D. C. OLIVER ON: MAY 8, 2006 The Association of Professional Engineers, Geologists and Geophysicists of Alberta	DESIGNER ORIGINAL STAMPED AND SIGNED BY: D. A. NIJE ON: MAY 4, 2006	CHECKER ORIGINAL STAMPED AND SIGNED BY: R. J. RAMSAY ON: MAY 4, 2006	2012-01-18 DRIP EDGE, ACP AND REFLECTORS SHOWN	RECOMMENDED DIRECTOR BRIDGE ENGINEERING TOM LOO	Alberta INFRASTRUCTURE AND TRANSPORTATION PL-3 DOUBLE TUBE TYPE BRIDGERAIL BARRIER END DETAILS
	APPROVED EXECUTIVE DIRECTOR TECHNICAL STANDARDS BRANCH ALLAN KWAN DATE MAY 23, 2006	AI BAR CODE DATE 2005-11-01 SHEET 2 of 4 DRAWING S-1703-06				

WS 2012-01-18 S1703A06-RV1