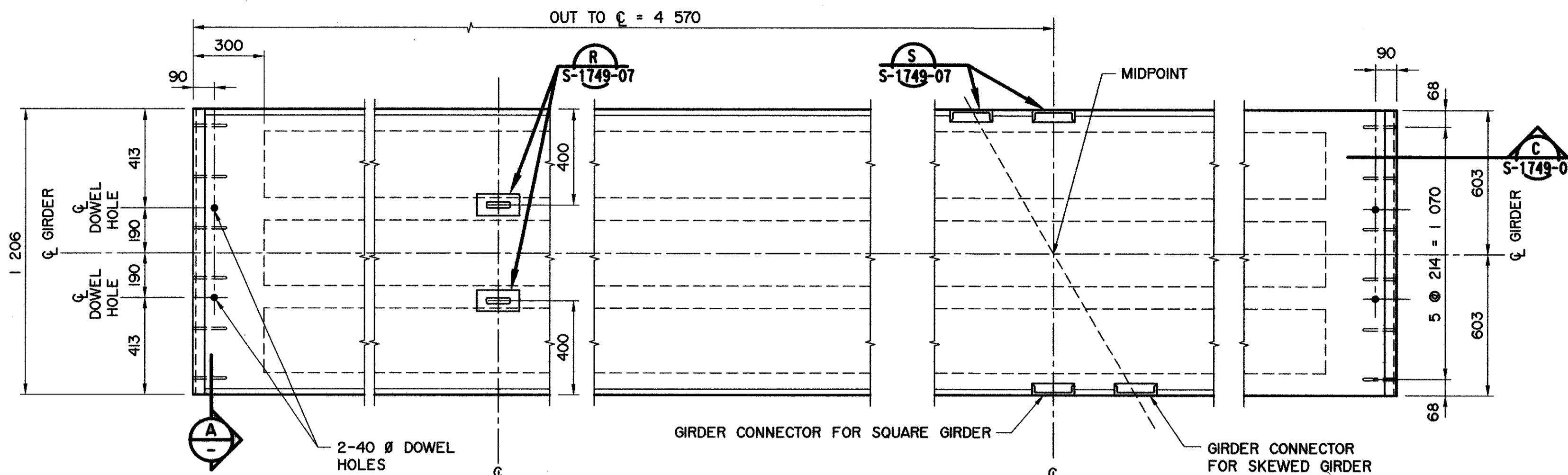


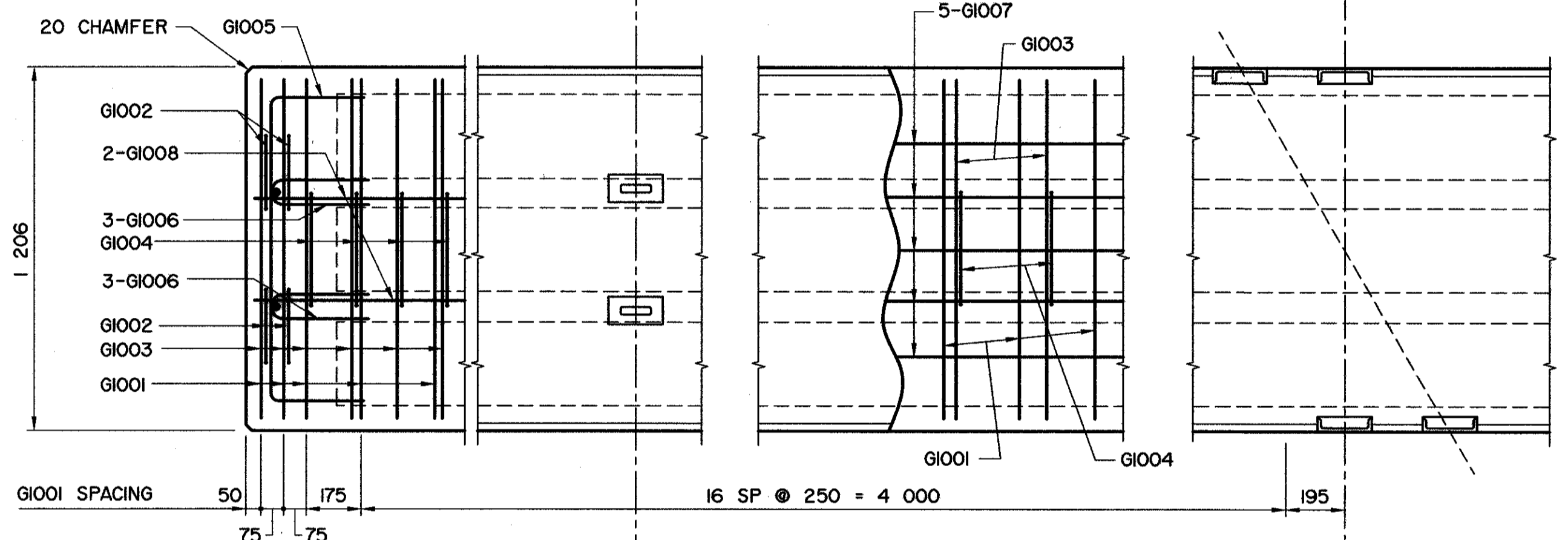
NOTE: FOR SKEWED END REINFORCING BAR DETAILS
SEE DWG S-1738-07

BAR LIST: FOR SQUARE GIRDER							
MARK	SIZE	No.	TYPE	X	Y	LENGTH	MASS
G1001	10	41	A	1 125	300	1 725	56
G1002	10	8	B	280		1 380	9
G1003	10	43	B	1 125		2 225	75
G1004	10	39	B	410		1 510	46
G1005	10	2	A	1 000	300	1 600	3
G1006	10	12	D			1 075	10
G1007	10	5	STR			9 040	35
G1008	10	2	STR			8 940	14
G1028	10	6	STR			1 100	5
G2501	25	4	A	9 000	350	9 700	152
TOTAL PLAIN kg:							405

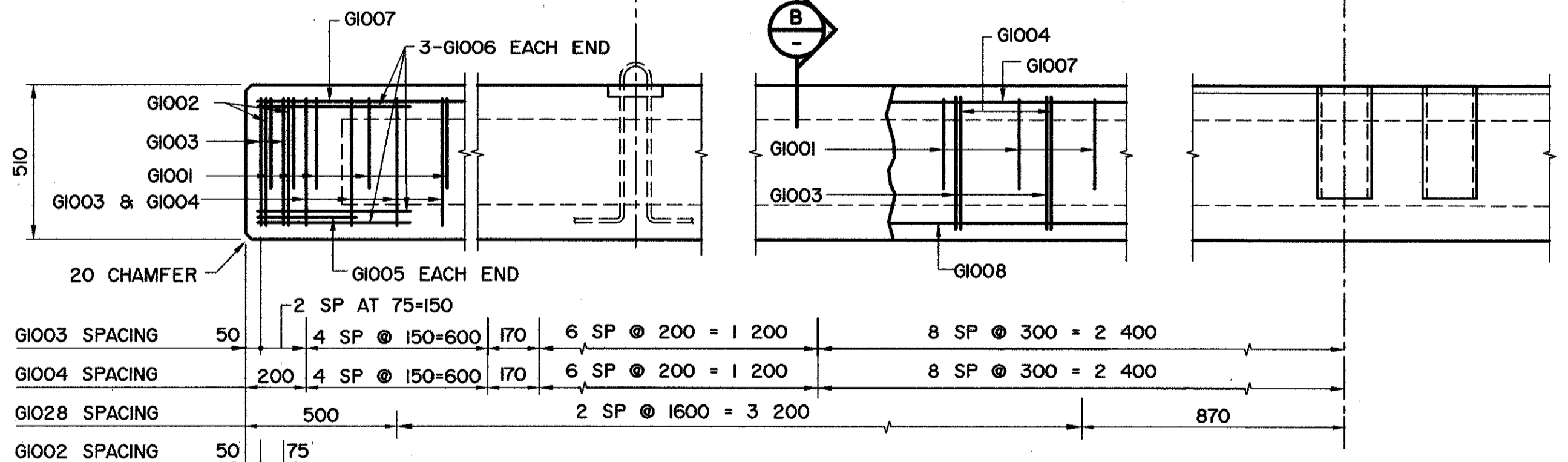


PLAN VIEW
1:15

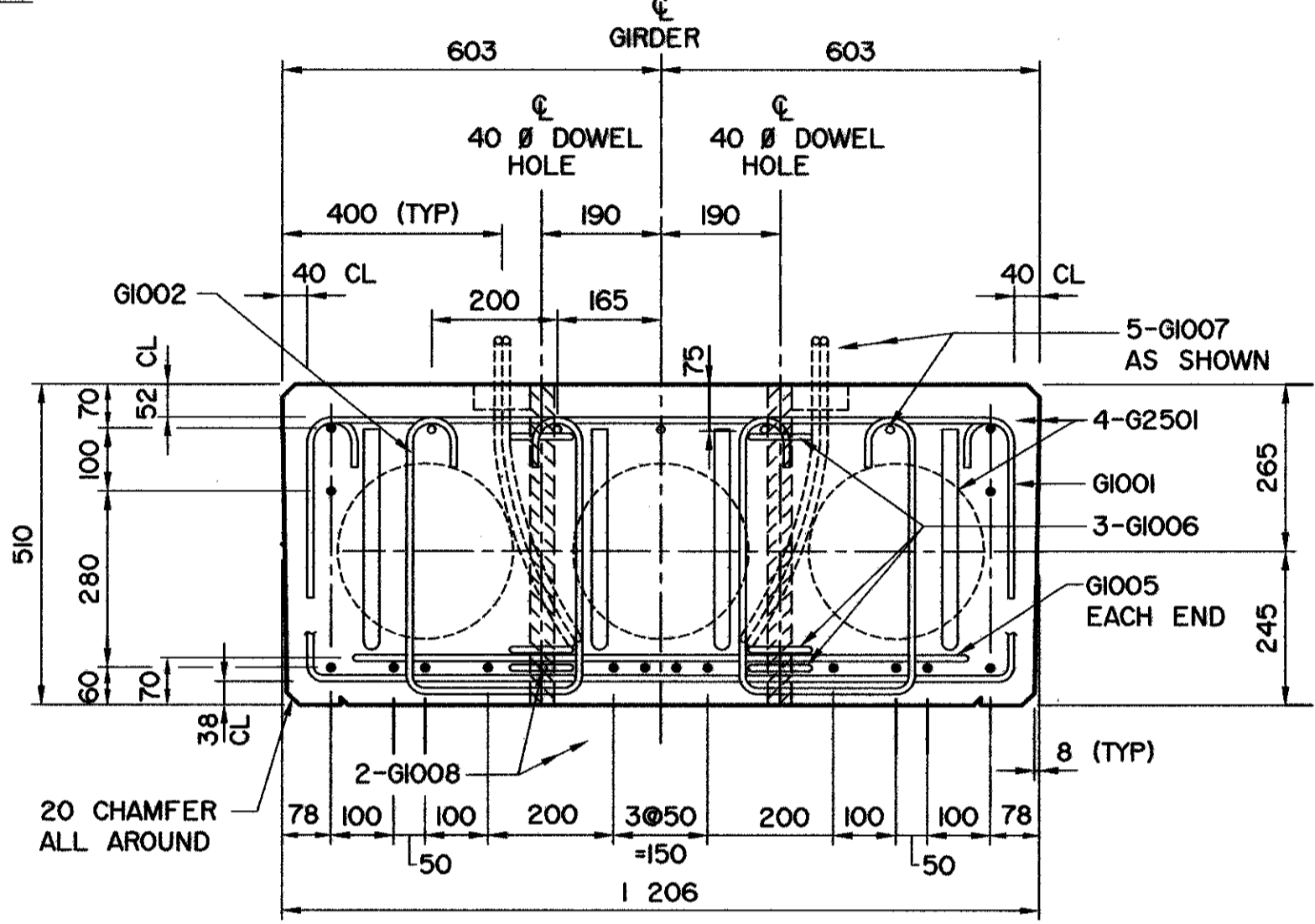
NOTE:
BEND REINFORCING BAR WHERE NECESSARY TO
ACCOMMODATE CHANNEL CONNECTORS. STIRRUP
SPACING TO BE MAINTAINED.



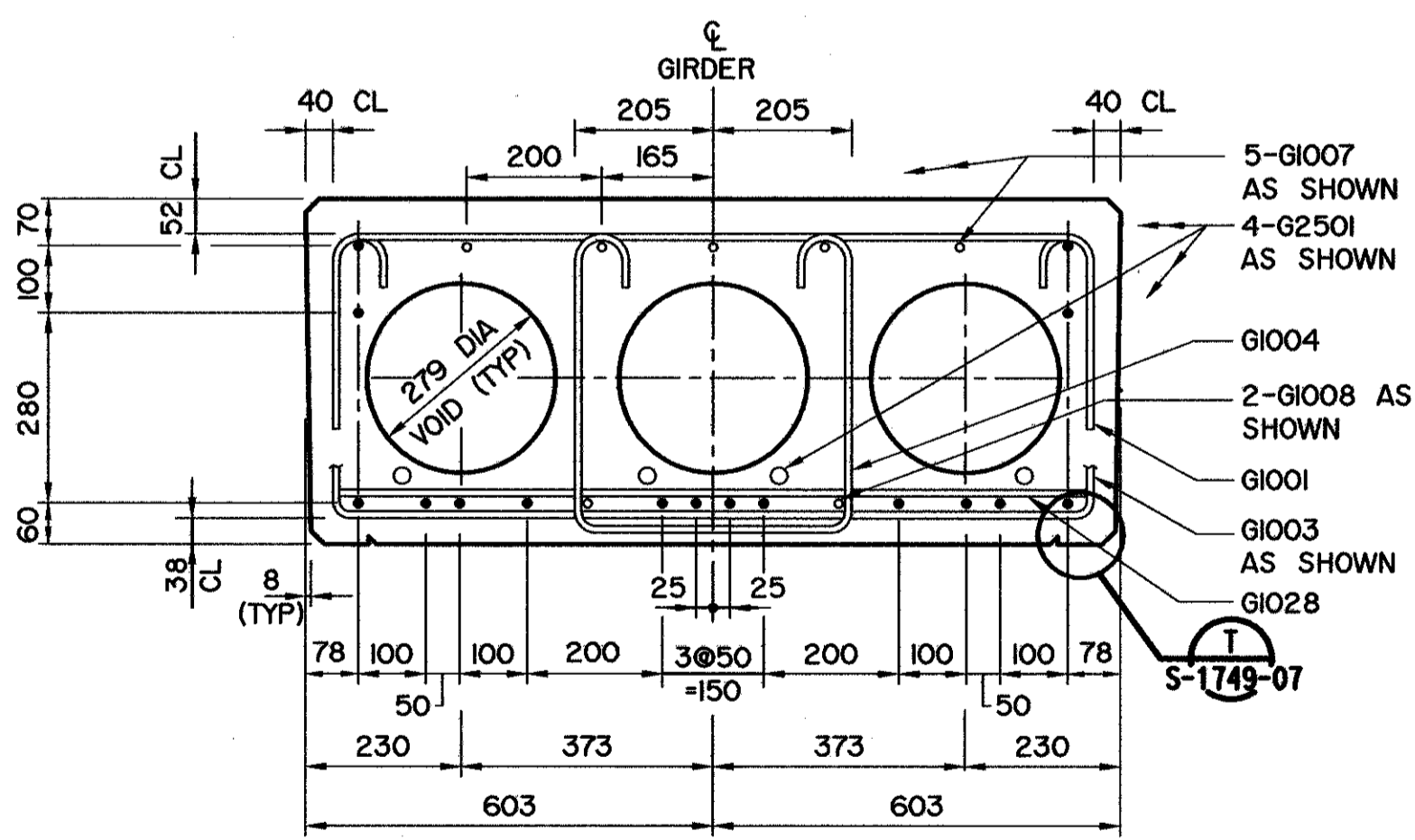
REINFORCEMENT PLAN
1:15



ELEVATION
1:15



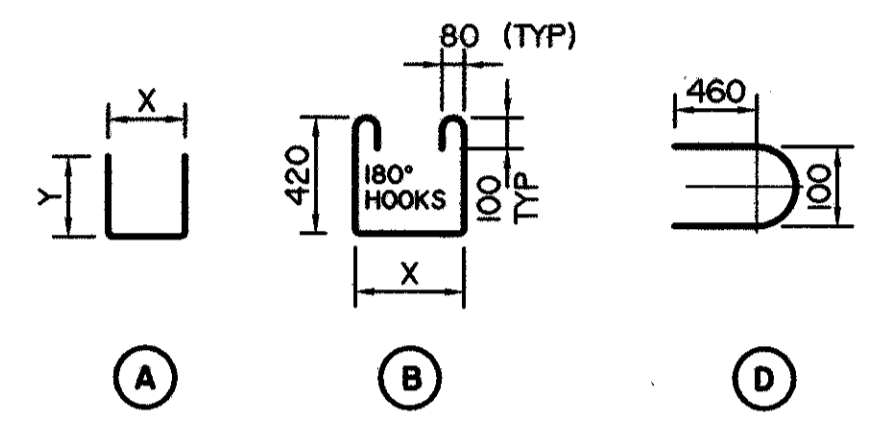
SECTION A-A
1:10



SECTION B-B
1:10

BAR TYPES

(ALL BAR DIMENSIONS ARE OUT TO OUT)



GENERAL NOTES

- FOR ADDITIONAL NOTES, REFER TO DWG S-1749-07.
- 16-15 # 7 WIRE STRANDS REQUIRED PER GIRDER.
- FORCE IN PRESTRESSING STEEL:
INITIAL TENSION BEFORE RELEASE = 195 kN/STRAND
DESIGN LOAD AFTER LOSSES = 150 kN/STRAND
- CALCULATED MASS OF ONE GIRDER = 10.03 TONNES

• WORK THESE DRAWINGS TOGETHER : S-1737-07; S-1738-07 AND S-1749-07

 BPTEC - DNW Engineering Ltd. Suite 200, 4220-98 St Edmonton, AB T6E 6A1 Ph: (780) 435-5376 Fax: (780) 435-4843 www.bptec-dnw.com 556-46	PERMIT TO PRACTICE BPTEC-DNW ENGINEERING LTD. Signature: <i>[Signature]</i> Date: <u>Aug 1, 2007</u> PERMIT NUMBER: PO132 The Association of Professional Engineers Geologists and Geophysicists of Alberta	DESIGNER CHECKER 	RECOMMENDED DIRECTOR BRIDGE ENGINEERING APPROVED EXECUTIVE DIRECTOR TECHNICAL STANDARDS BRANCH DATE: <u>Sept 17, 2007</u>	Alberta INFRASTRUCTURE AND TRANSPORTATION PRESTRESSED CONCRETE 9.14 m TYPE SL-510 INTERIOR GIRDER			
				DATE: _____ DATE: _____ REV: _____ DATE: _____ REVISIONS: _____ BY: _____	AI BAR CODE: _____ DATE: <u>2007-06-07</u> SHEET: <u>1 of 3</u> DRAWING: <u>S-1737-07</u>		