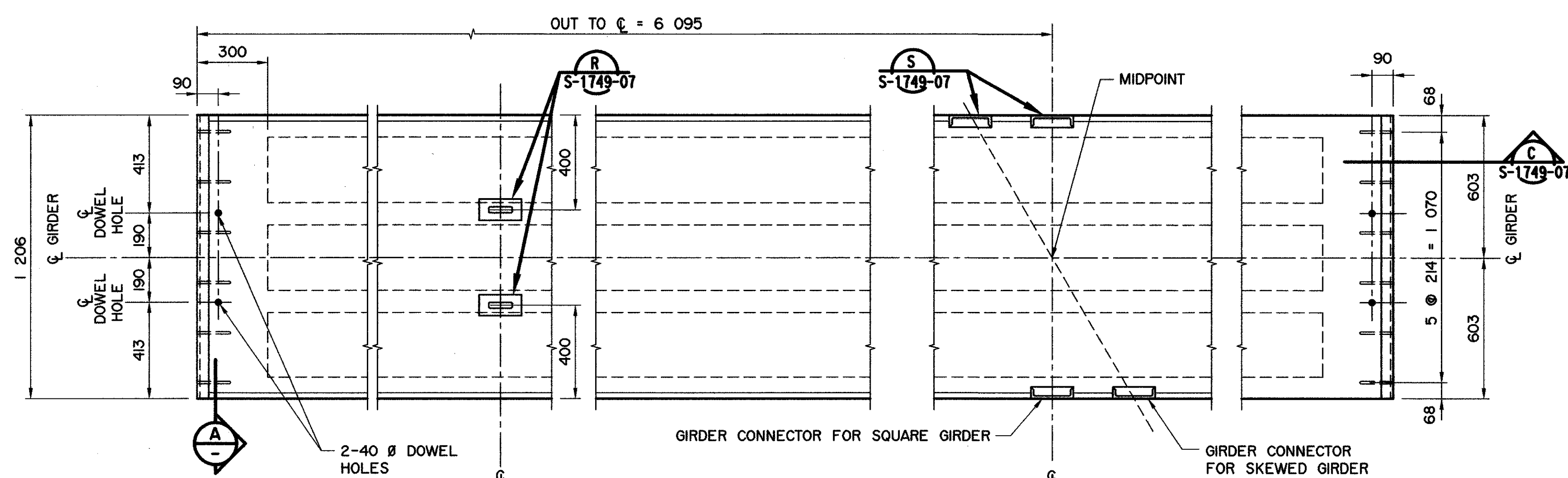


NOTE: FOR SKEWED END REINFORCING BAR DETAILS SEE DWG S-1746-07

BAR LIST: FOR SQUARE GIRDER

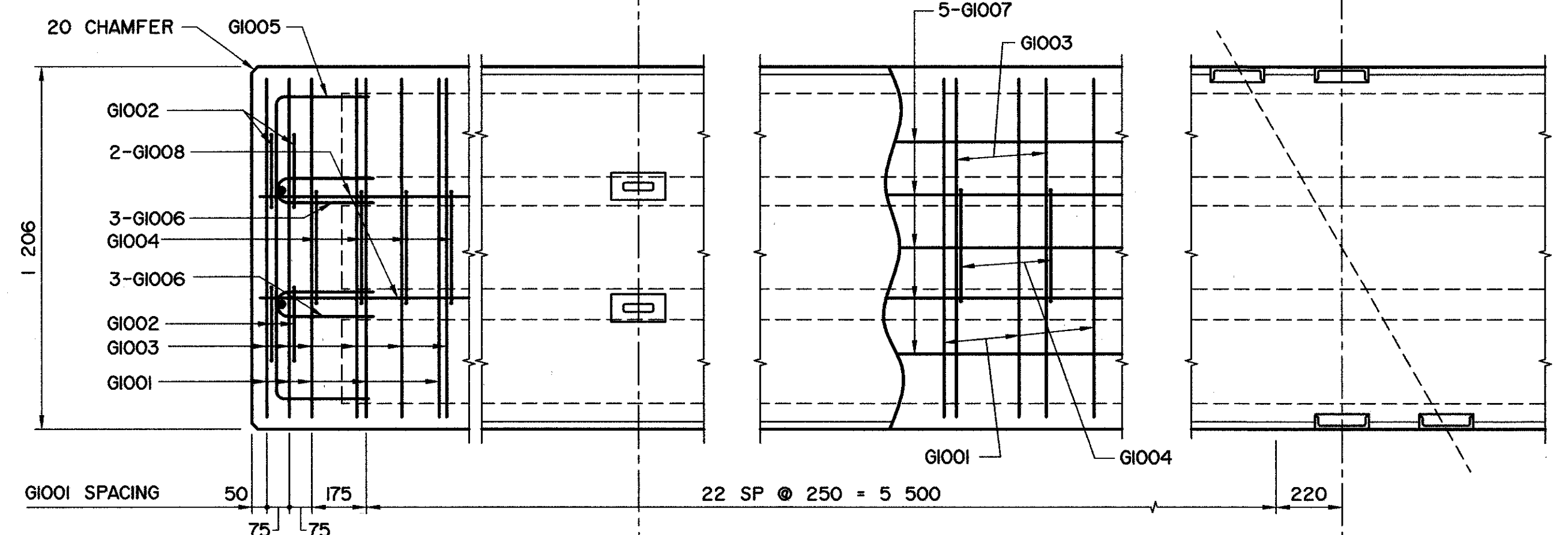
MARK	SIZE	No.	TYPE	X	Y	LENGTH	MASS
G1001	10	53	A	1 125	300	1 725	72
G1002	10	8	B	280		1 380	9
G1003	10	55	B	1 125		2 225	96
G1004	10	51	B	410		1 510	60
G1005	10	2	A	1 000	300	1 600	3
G1006	10	12	D			1 075	10
G1007	10	5	STR			12 090	47
G1008	10	2	STR			11 990	19
G1028	10	6	STR			1 100	5
G2501	25	4	A	12 040	350	12 740	200

TOTAL PLAIN kg: 521

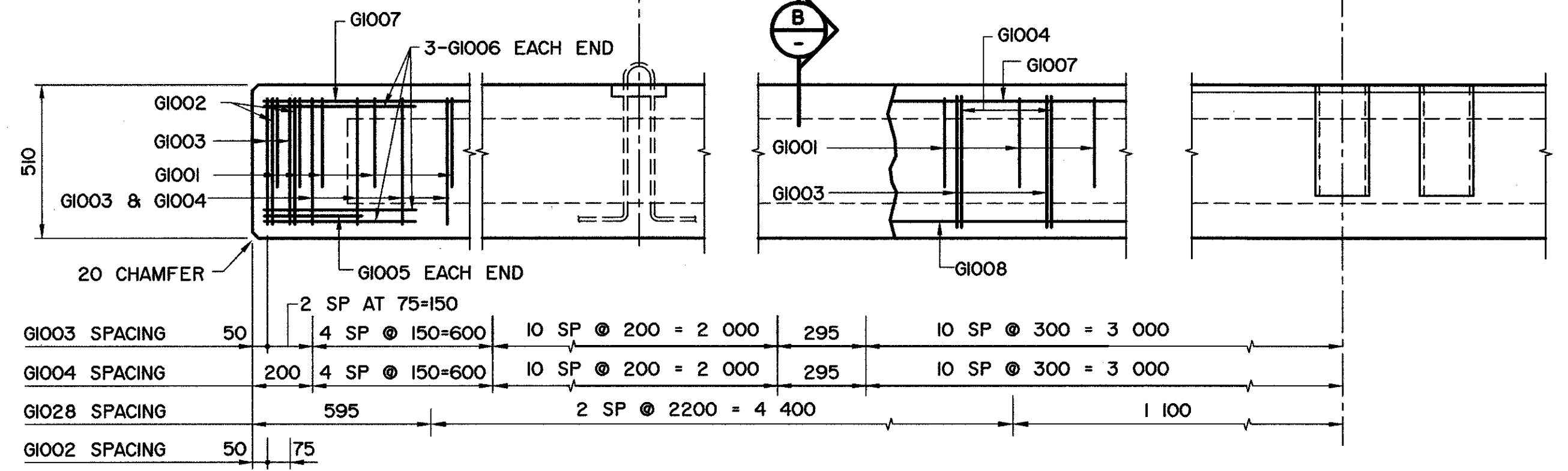


PLAN VIEW
1:15

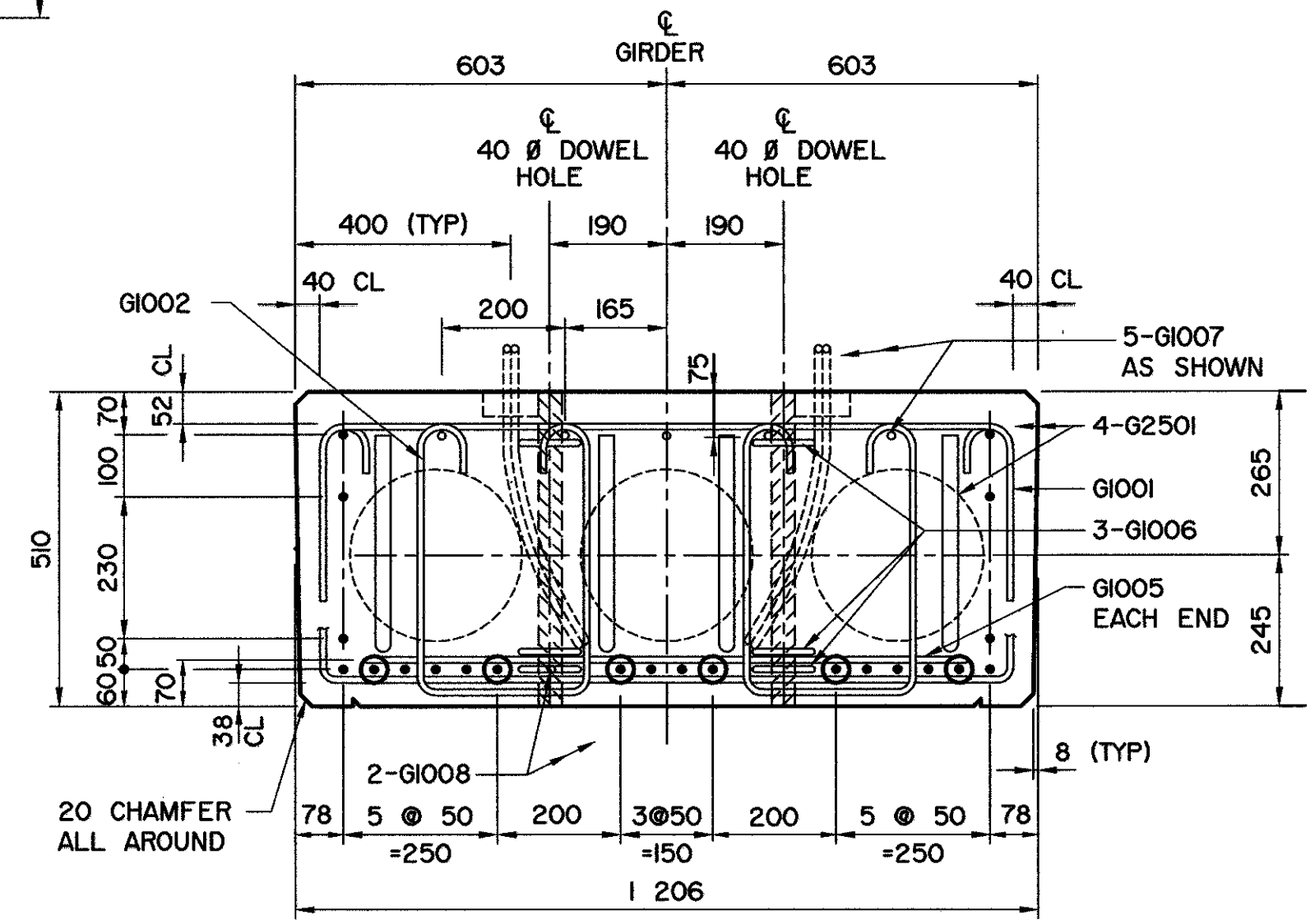
NOTE: BEND REINFORCING BAR WHERE NECESSARY TO ACCOMMODATE CHANNEL CONNECTORS. STIRRUP SPACING TO BE MAINTAINED.



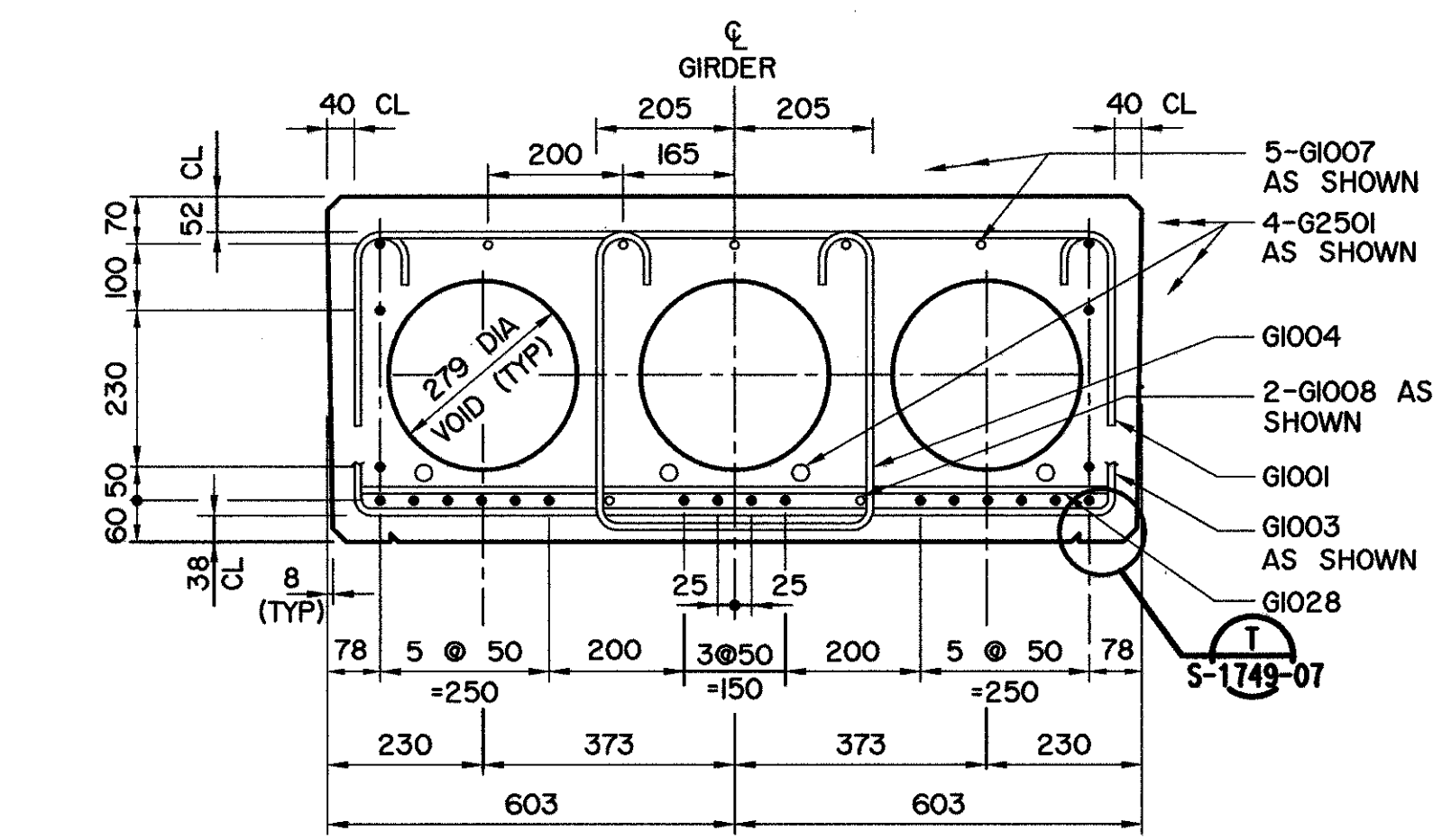
REINFORCEMENT PLAN
1:15



ELEVATION
1:15



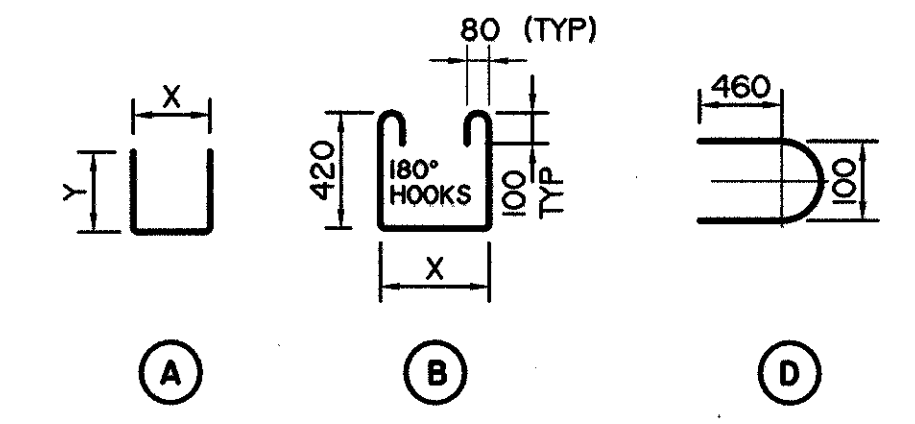
A SECTION
1:10



B SECTION
1:10

BAR TYPES

(ALL BAR DIMENSIONS ARE OUT TO OUT)



GENERAL NOTES

- FOR ADDITIONAL NOTES, REFER TO DWG S-1749-07.
- 22-15 # 7 WIRE STRANDS REQUIRED PER GIRDER.
- STRANDS MARKED ⊙ ARE TO BE DEBONDED FOR 1400 mm FROM THE GIRDER ENDS.
- FORCE IN PRESTRESSING STEEL:
INITIAL TENSION BEFORE RELEASE = 195 kN/STRAND
DESIGN LOAD AFTER LOSSES = 136 kN/STRAND
- CALCULATED MASS OF ONE GIRDER = 13.28 TONNES

• WORK THESE DRAWINGS TOGETHER : S-1745-07, S-1746-07 AND S-1749-07

 BPTec - DNW Engineering Ltd. Suite 200, 4229-98 St Edmonton, AB T6E 6A1 Ph: (780) 435-5375 Fax: (780) 435-4843 www.bptec-dnw.com 556-46	PERMIT TO PRACTICE BPTec-DNW ENGINEERING LTD. Signature: <i>[Signature]</i> Date: August 1, 2007 PERMIT NUMBER: PO132 The Association of Professional Engineers Geologists and Geophysicists of Alberta	DESIGNER DATE:	CHECKER DATE:	REVISIONS REV: DATE: REVISIONS: BY:	RECOMMENDED DIRECTOR BRIDGE ENGINEERING APPROVED EXECUTIVE DIRECTOR TECHNICAL STANDARDS BRANCH DATE: Sept 17, 2007	Alberta INFRASTRUCTURE AND TRANSPORTATION PRESTRESSED CONCRETE 12.19 m TYPE SL-510 INTERIOR GIRDER AI BAR CODE DATE SHEET DRAWING 2007-06-07 1 of 3 S-1745-07
				REV: DATE: REVISIONS: BY:		