

NOTE: FOR SKEWED END REINFORCING BAR DETAILS SEE DWG S-1748-07

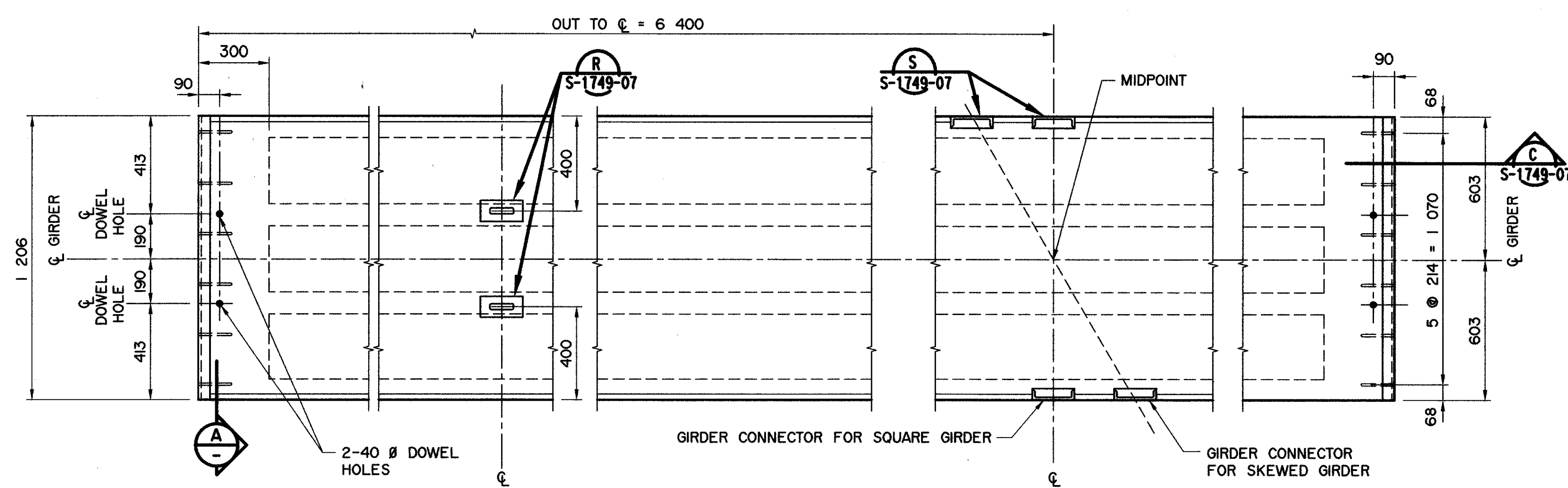
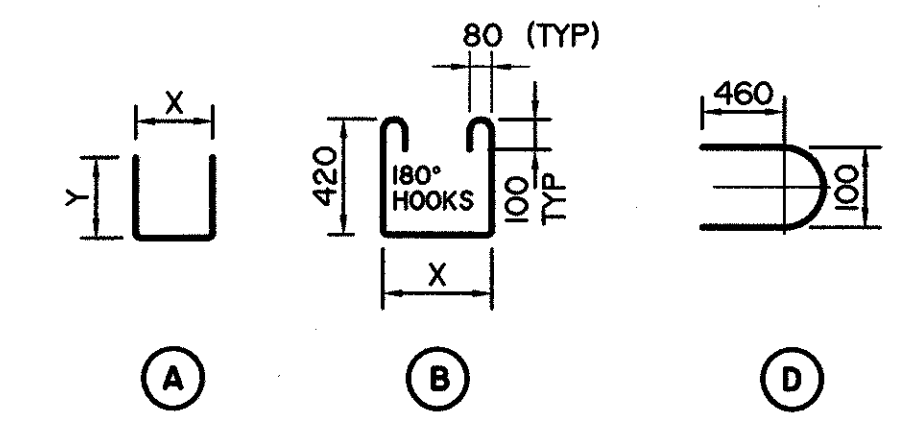
BAR LIST: FOR SQUARE GIRDER

MARK	SIZE	No.	TYPE	X	Y	LENGTH	MASS
G1001	10	57	A	1 125	300	1 725	77
G1002	10	8	B	280		1 380	9
G1003	10	57	B	1 125		2 225	100
G1004	10	53	B	410		1 510	63
G1005	10	2	A	1 000	300	1 600	3
G1006	10	12	D			1 075	10
G1007	10	5	STR			12 700	50
G1008	10	2	STR			12 600	20
G1028	10	6	STR			1 100	5
G2501	25	4	A	12 650	350	13 350	210

TOTAL PLAIN kg: 547

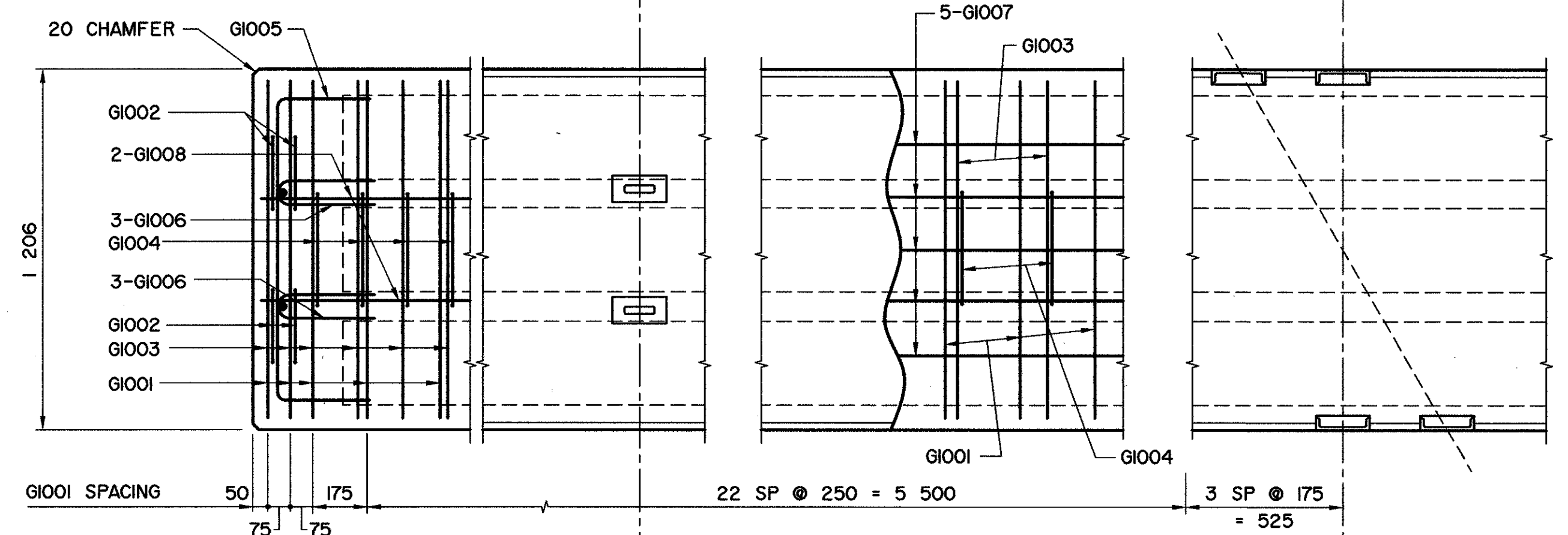
BAR TYPES

(ALL BAR DIMENSIONS ARE OUT TO OUT)

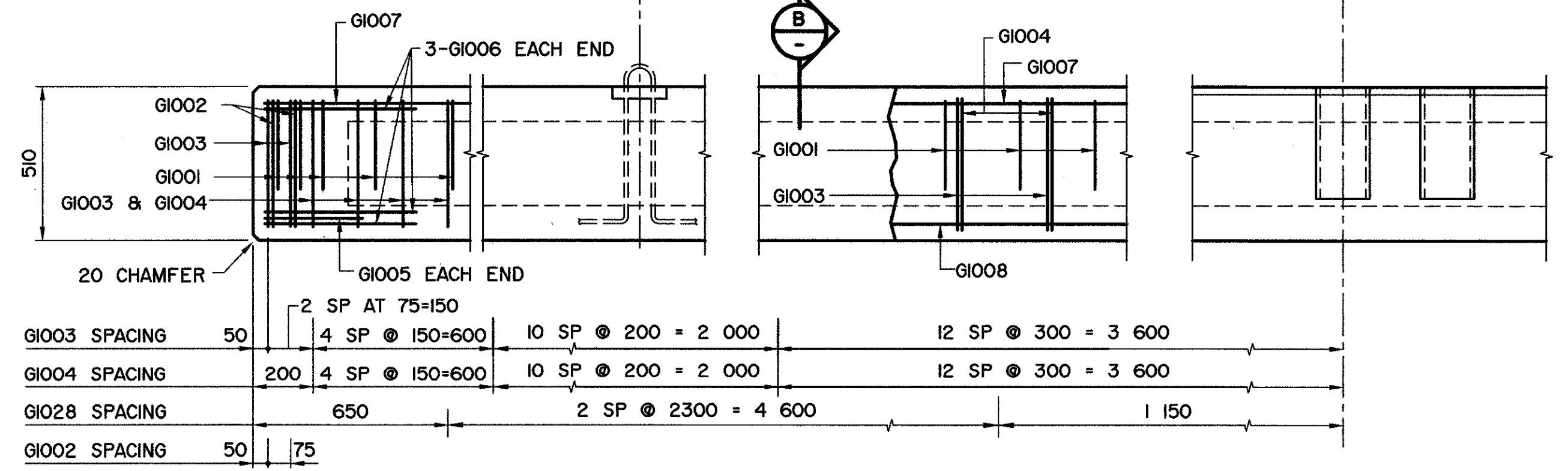


PLAN VIEW
1:15

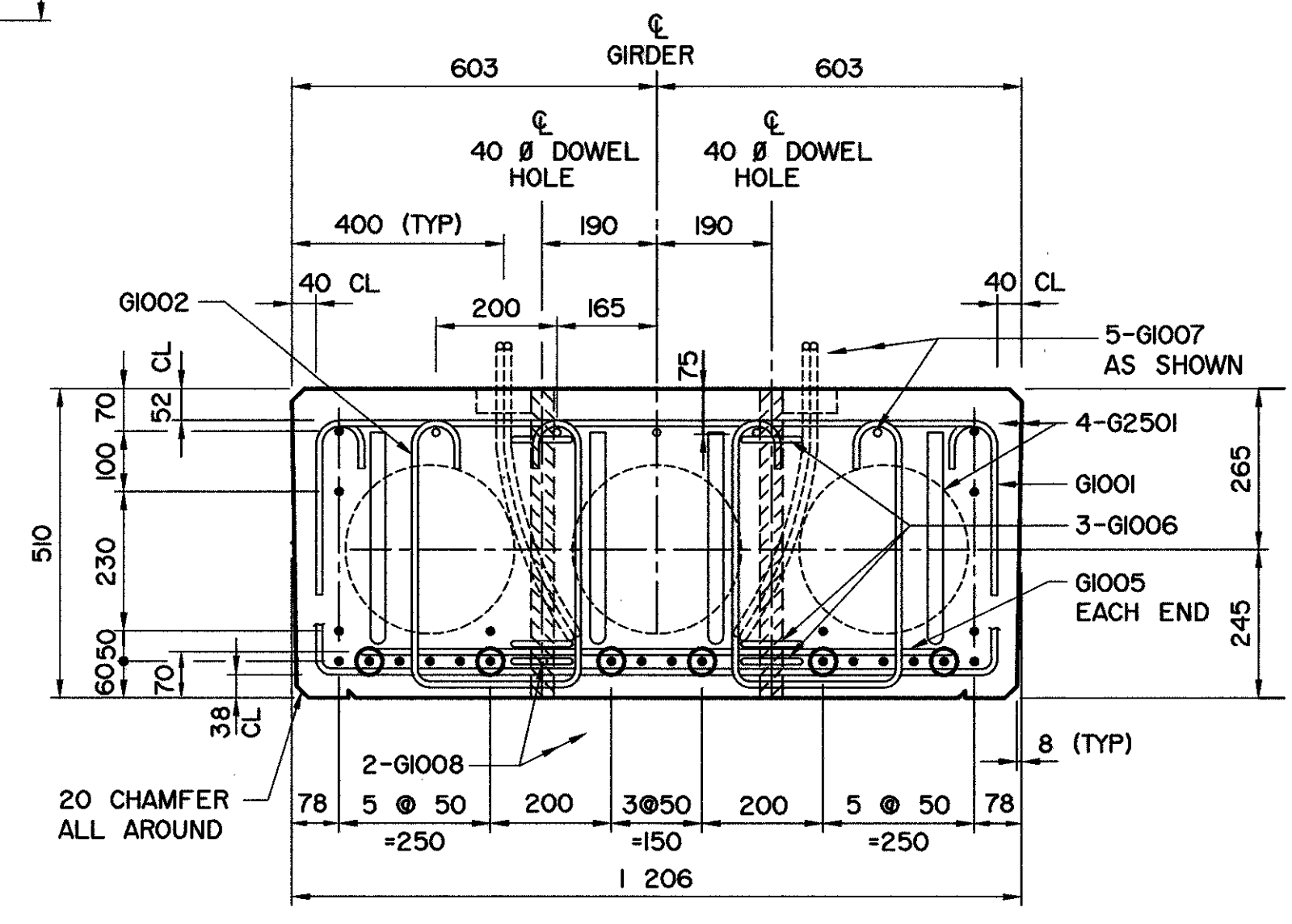
NOTE:
BEND REINFORCING BAR WHERE NECESSARY TO ACCOMMODATE CHANNEL CONNECTORS. STIRRUP SPACING TO BE MAINTAINED.



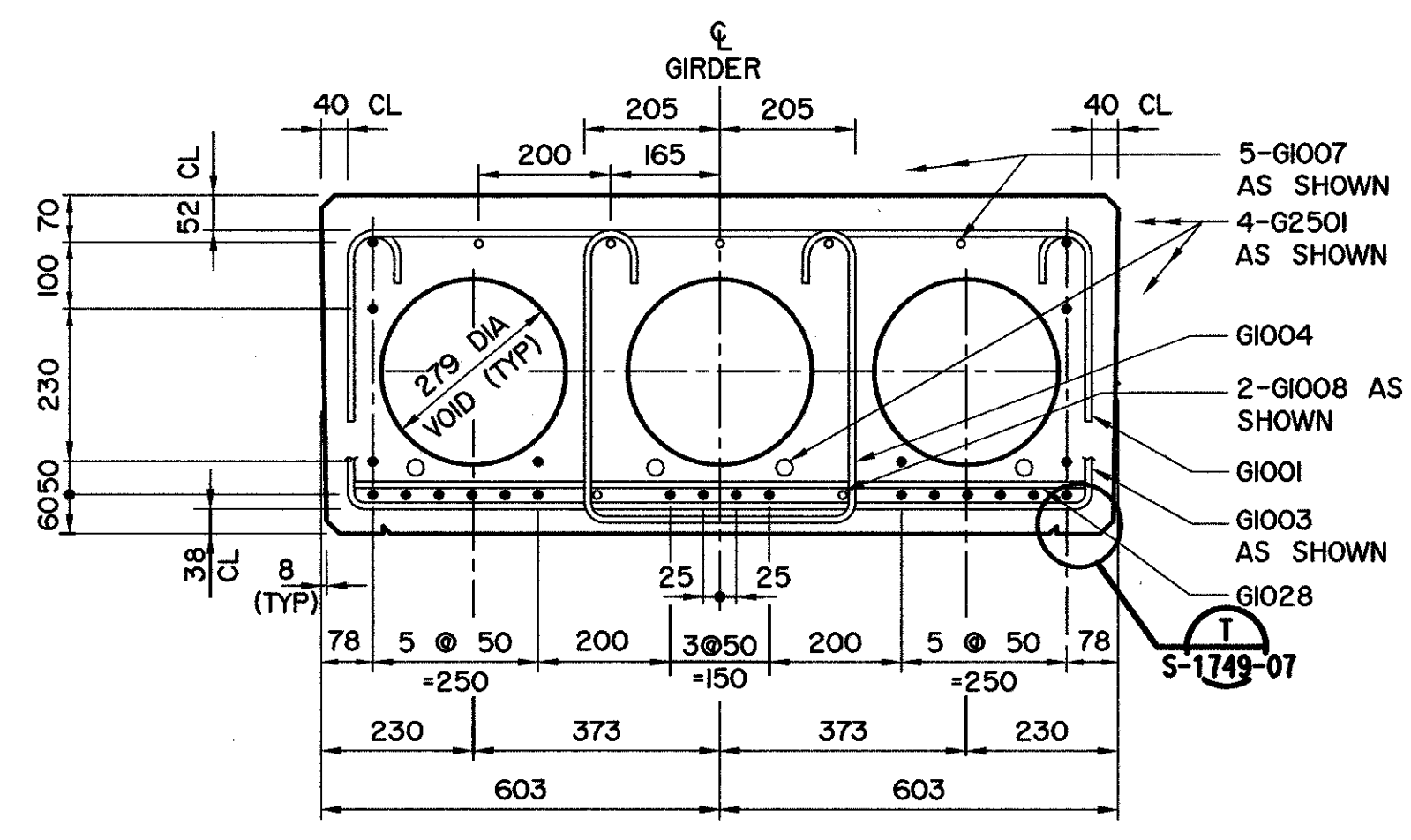
REINFORCEMENT PLAN
1:15



ELEVATION
1:15



A SECTION
1:10



B SECTION
1:10

GENERAL NOTES

- FOR ADDITIONAL NOTES, REFER TO DWG S-1749-07.
- 24-15 ̢ 7 WIRE STRANDS REQUIRED PER GIRDER.
- STRANDS MARKED Ⓞ ARE TO BE BONDED FOR 1400 mm FROM THE GIRDER ENDS.
- FORCE IN PRESTRESSING STEEL:
INITIAL TENSION BEFORE RELEASE = 195 kN/STRAND
DESIGN LOAD AFTER LOSSES = 132 kN/STRAND
- CALCULATED MASS OF ONE GIRDER = 13.93 TONNES

• WORK THESE DRAWINGS TOGETHER : S-1747-07, S-1748-07 AND S-1749-07

 BPTec - DNW Engineering Ltd. Suite 200, 4220-98 St Edmonton, AB T6E 6A1 Ph: (780) 435-5376 Fax: (780) 435-4843 www.bptec-dnw.com 556-46	PERMIT TO PRACTICE BPTec-DNW ENGINEERING LTD. Signature: [Signature] Date: August 1, 2007 PERMIT NUMBER: PO132 The Association of Professional Engineers Geologists and Geophysicists of Alberta	DESIGNER STUART D. SMITH	CHECKER ROBERT B. DONOHUE	RECOMMENDED DIRECTOR BRIDGE ENGINEERING Tom Lo	Alberta INFRASTRUCTURE AND TRANSPORTATION PRESTRESSED CONCRETE 12.80 m TYPE SL-510 INTERIOR GIRDER
				APPROVED EXECUTIVE DIRECTOR TECHNICAL STANDARDS BRANCH Allan Curran	