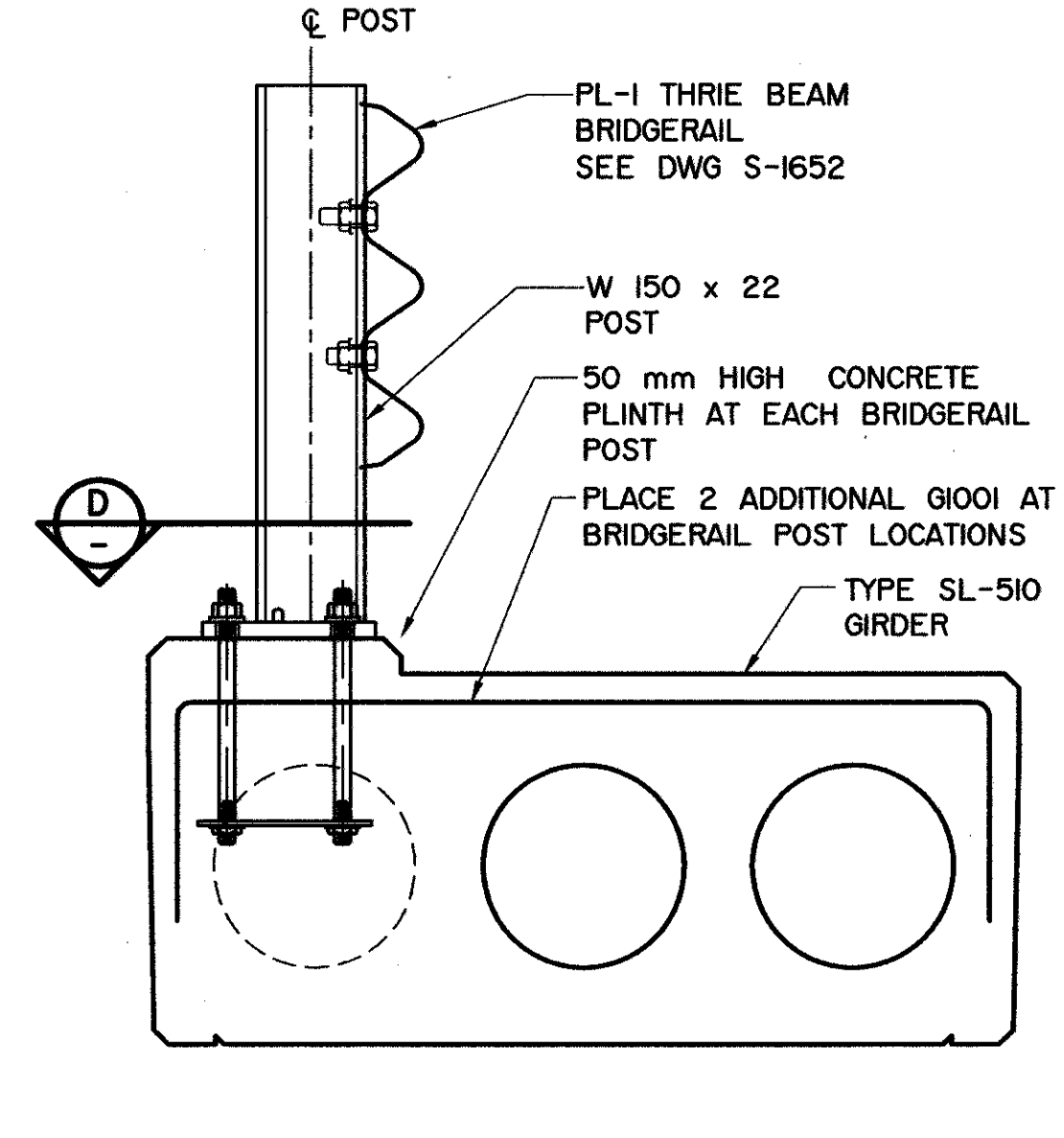


GIRDER SKEWED END PLAN DETAIL
1:15



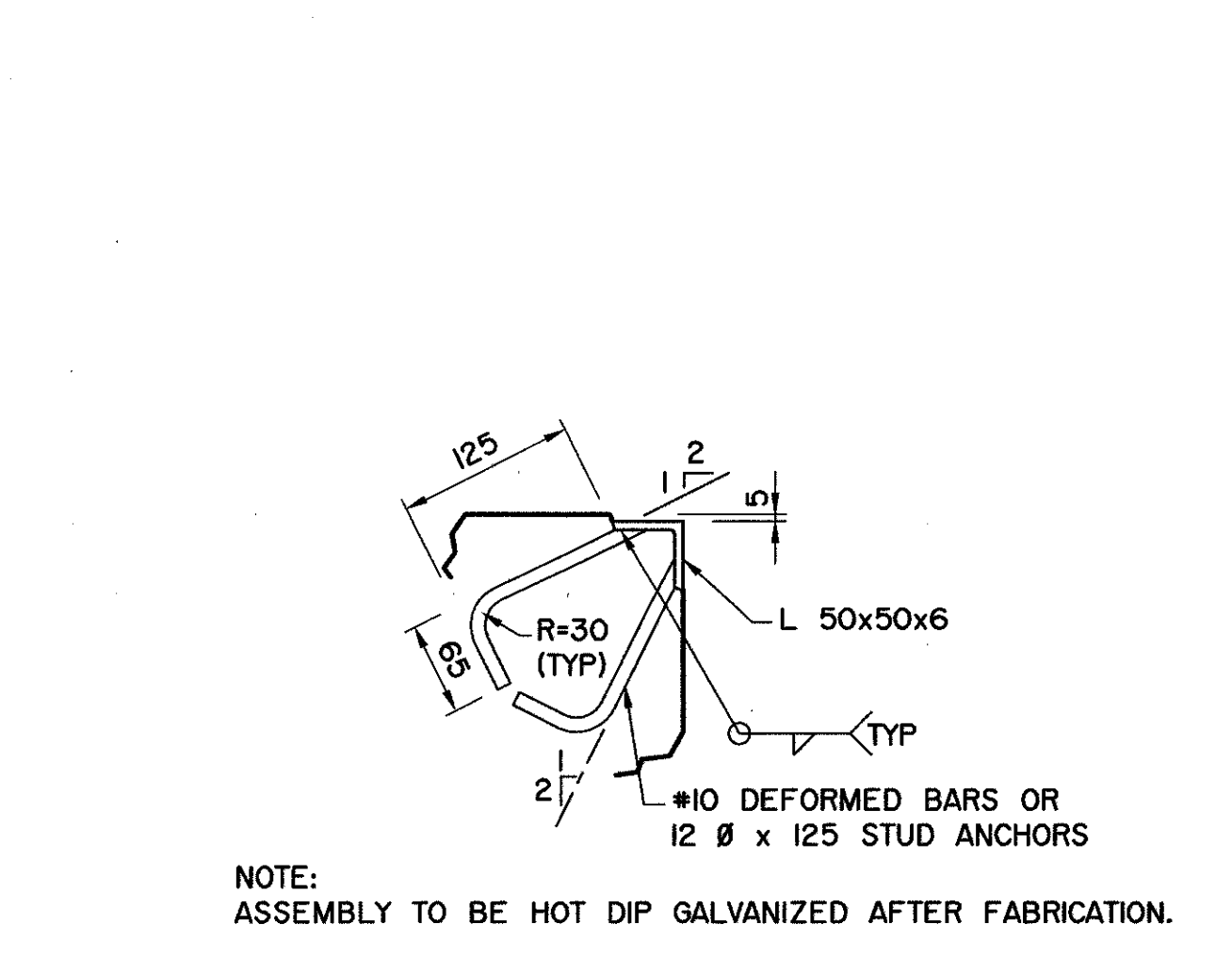
TYPICAL EXTERIOR GIRDER
1:10

- GENERAL NOTES**
- ALL DRAWING REFERENCES ARE TO CURRENT DRAWINGS.
 - DESIGN**
 - CAN/CSA-S6-06 SPECIFICATIONS EXCEPT AS MODIFIED BELOW:
 - ALLOWABLE TENSION IN BOTTOM FIBRE AT MIDSPAN = 2.0 MPa EXCEPT WHERE NOTED ON GIRDER SPECIFIC DRAWINGS.
 - NO TENSION ALLOWED IN DECK SURFACE.
 - LOADING:**
 - LIVE LOAD - CAN/CSA-S6-06: CL-800 - ONE WHEEL LINE PER GIRDER
 - DEAD LOAD - GIRDER = 1.16 t/m
 - ALLOWANCE FOR FUTURE WEARING SURFACE (90 mm ACP AND WATERPROOFING) = 0.26 t/m

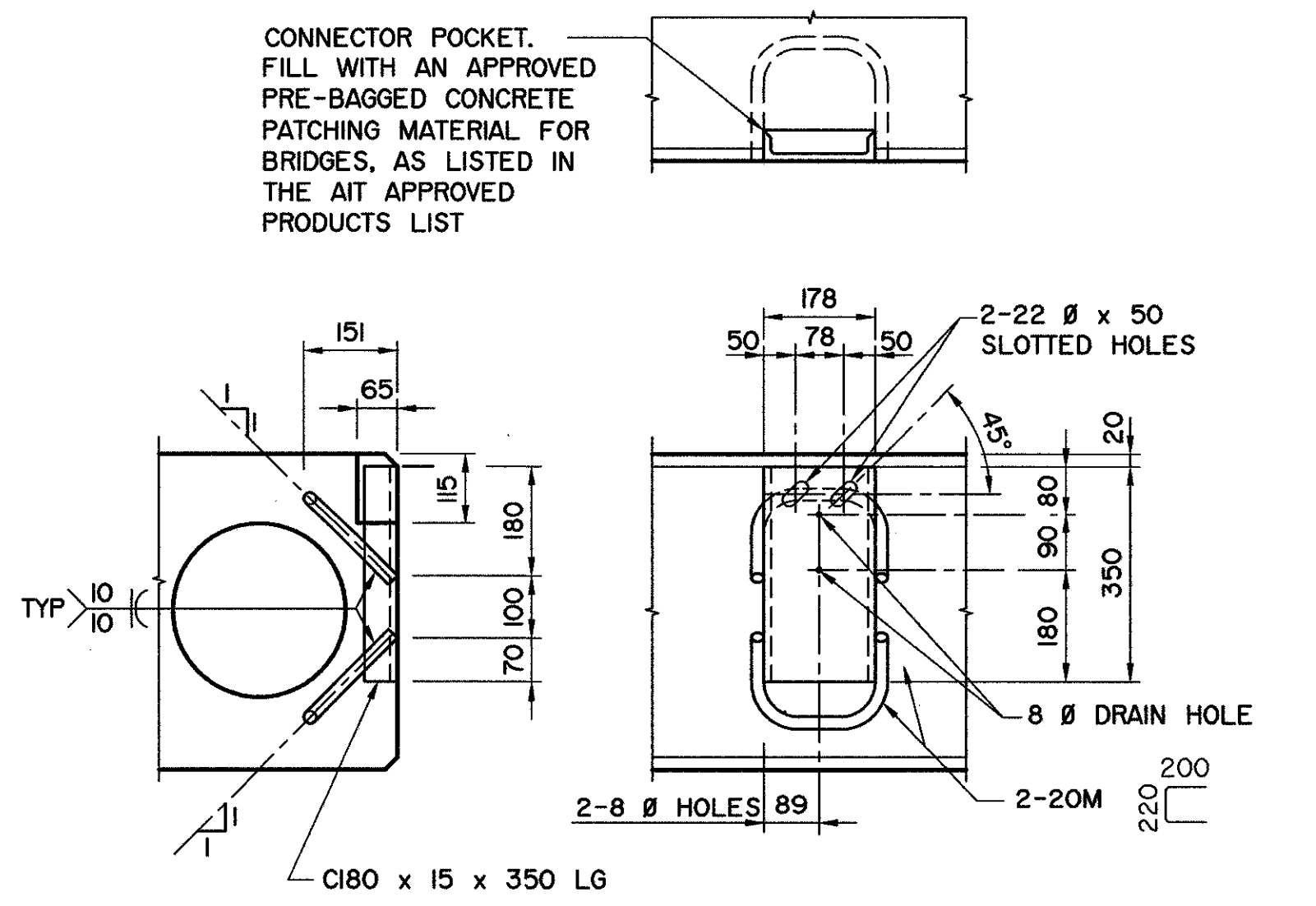
- MATERIALS**
- CONCRETE SHALL BE STANDARD WEIGHT, CONTAINING 10% SILICA FUME AND NOT LESS THAN 5% AIR ENTRAINMENT.
 - 28 DAY CONCRETE STRENGTH:
 - 50 MPa FOR ALL SPANS EXCEPT THE 14.0 m SPAN
 - 70 MPa FOR THE 14.0 m SPAN
 - CONCRETE RELEASE STRENGTH:
 - 35 MPa FOR ALL SPANS EXCEPT THE 14.0 m SPAN
 - 40 MPa FOR THE 14.0 m SPAN
 - PRESTRESSING STEEL SHALL BE 15 Ø, 7 WIRE LOW RELAXATION STRAND (fpu = 1860 MPa).
 - REINFORCING STEEL SHALL BE GRADE 400W. TACK WELDING OF REINFORCING SHALL NOT BE ALLOWED.

- FABRICATION**
- GIRDERS SHALL CONFORM TO THE CURRENT REQUIREMENTS OF THE SPECIFICATIONS FOR BRIDGE CONSTRUCTION SECTION 7 - PRECAST CONCRETE UNITS.
 - ALL GALVANIZING SHALL CONFORM TO CSA SPECIFICATION G164.
 - BEND OR SHIFT REINFORCING WHERE REQUIRED TO CLEAR GIRDER CONNECTORS AND LIFTING HOOK ASSEMBLIES. STIRRUP SPACING IS TO BE MAINTAINED.
 - ALL EXPOSED CONCRETE CORNERS SHALL HAVE A 20 mm CHAMFER OR FILLET UNLESS NOTED OTHERWISE.

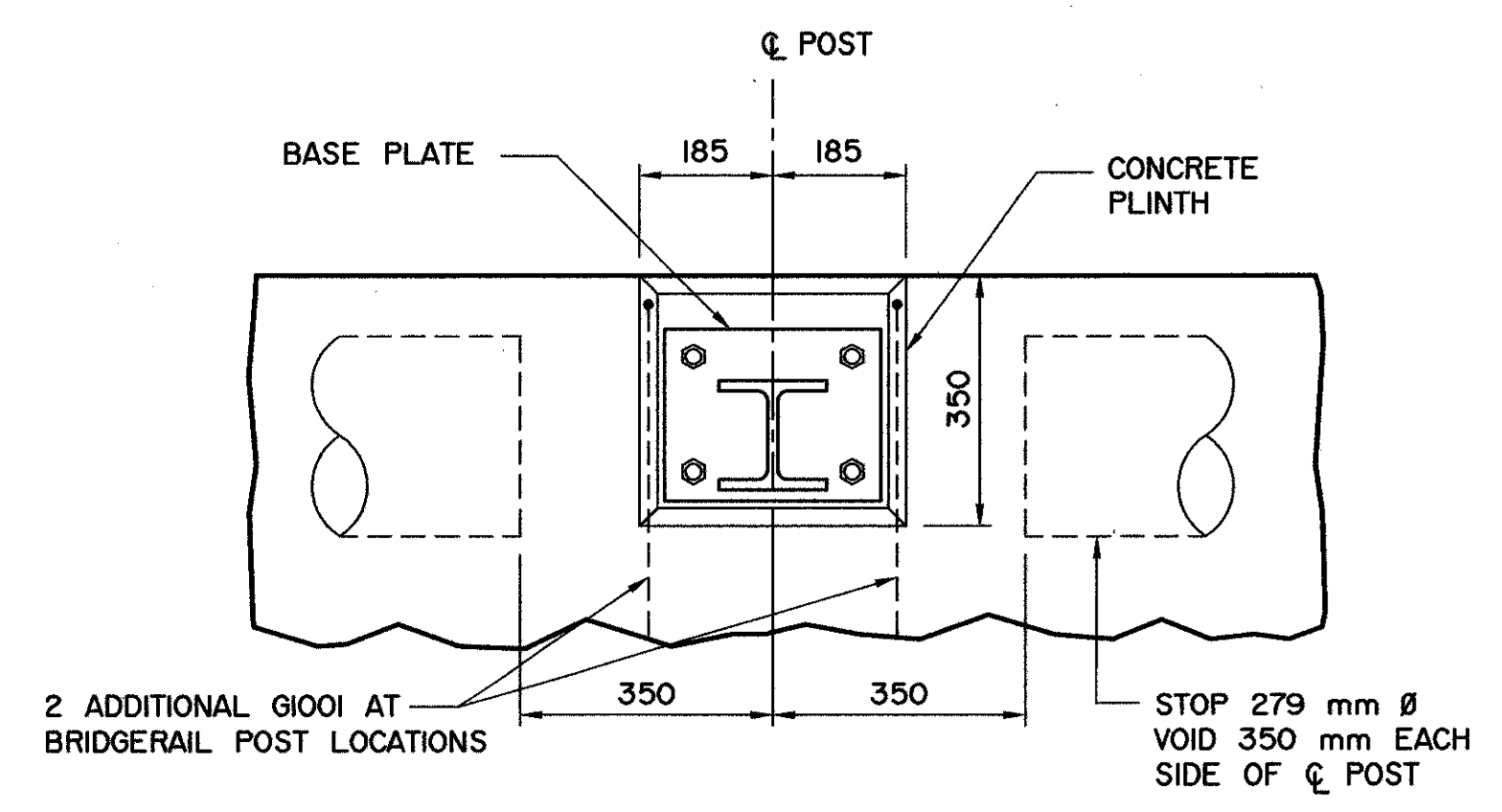
- ERECTION**
- LIFTING FORCE SHALL BE VERTICAL AT ALL TIMES.
 - GIRDERS SHALL BE MAINTAINED LEVEL AT ALL TIMES.
 - ANY FREE SPACE BETWEEN CONNECTORS SHALL BE FILLED WITH DROP-IN WASHERS.



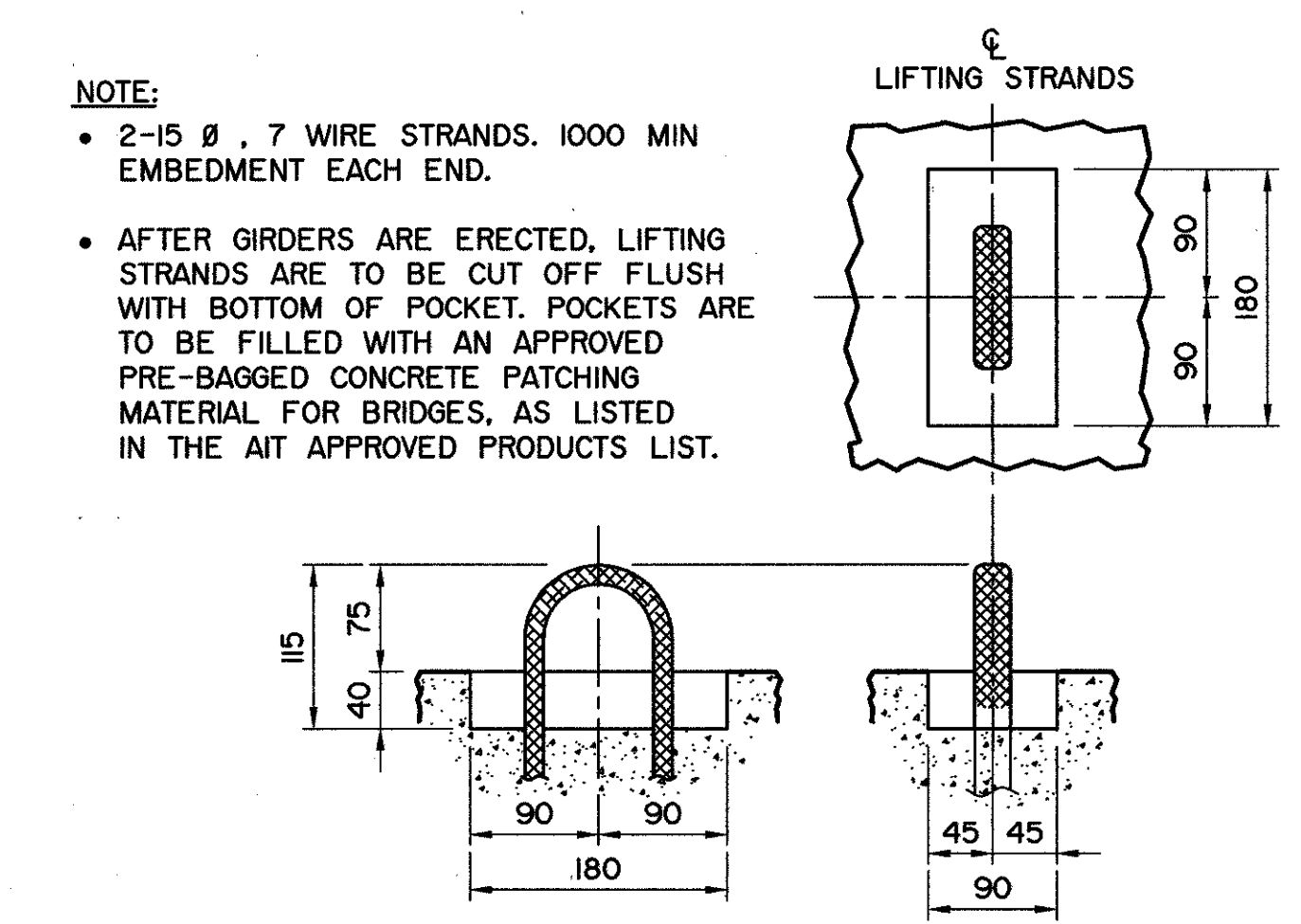
BUFFER ANGLE
1:5



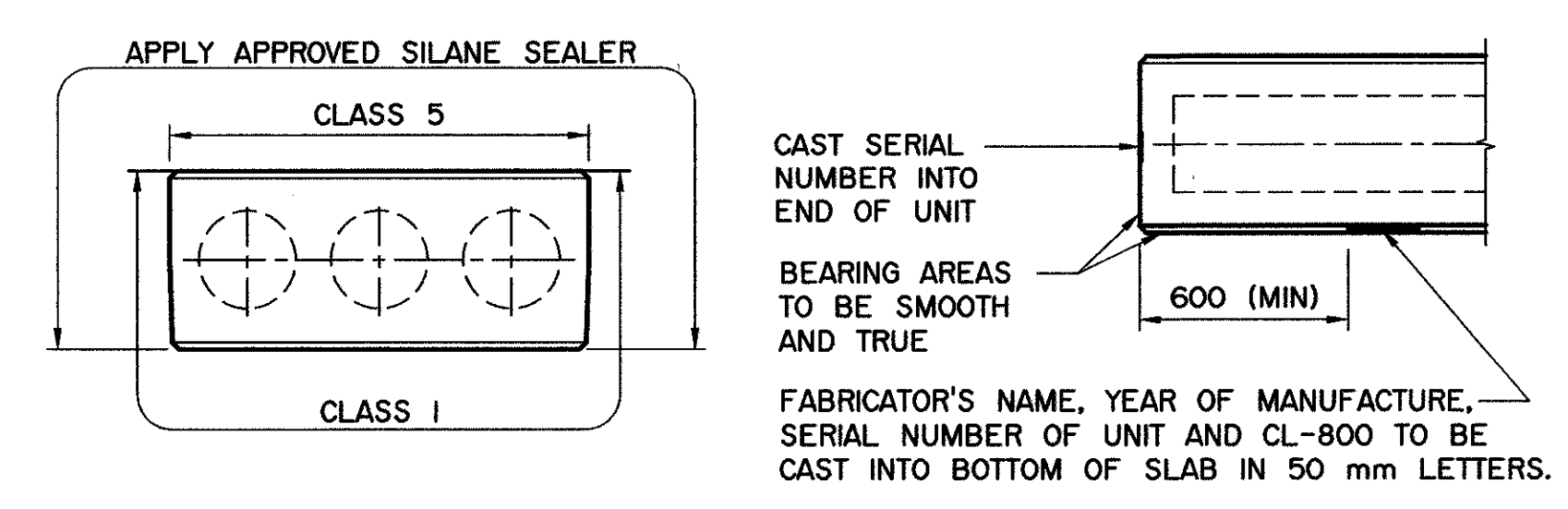
GIRDER CONNECTORS
1:10



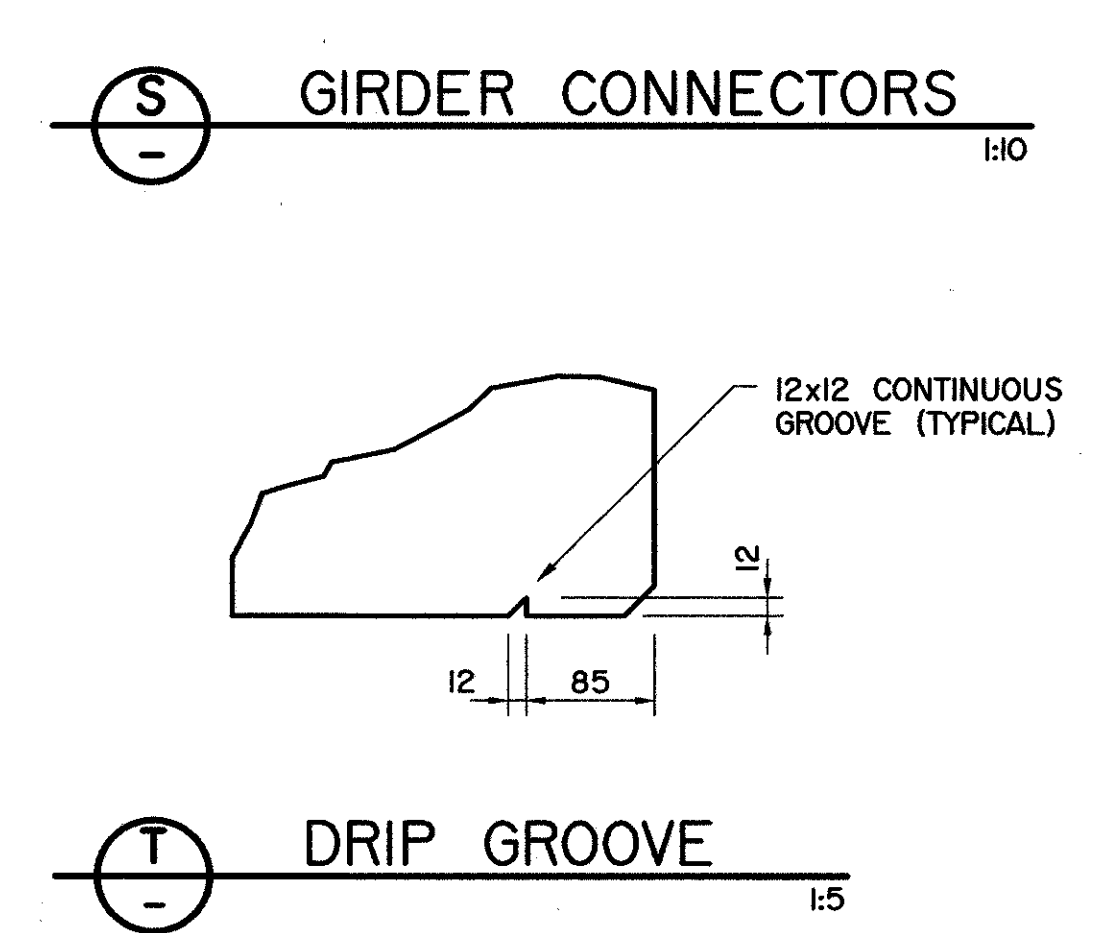
AT POSTS
1:10



LIFTING HOOK POCKET
1:5



GIRDER FINISHES
(BY FABRICATOR) 1:20



DRIP GROOVE
1:5

SUPERSEDED BY S-1749-07 REVISION 1, 2008-04-18

 BPTec - DNW Engineering Ltd. Suite 200, 4220-98 St. Edmonton, AB T6E 6A1 Ph: (780) 436-5376 Fax: (780) 435-4843 www.bptec-dnw.com 556-46	PERMIT TO PRACTICE BPTec-DNW ENGINEERING LTD. Signature: [Signature] Date: August 1, 2007 PERMIT NUMBER: PO132 The Association of Professional Engineers Geologists and Geophysicists of Alberta	DESIGNER ROBERT D. SMITH DATE:	CHECKER ROBERT B. DONALD DATE:	RECOMMENDED DIRECTOR BRIDGE ENGINEERING APPROVED EXECUTIVE DIRECTOR TECHNICAL STANDARDS BRANCH DATE: Sept 17, 2007	Alberta INFRASTRUCTURE AND TRANSPORTATION PRESTRESSED CONCRETE TYPE SL-510 GIRDER STANDARD DETAILS AI BAR CODE DATE SHEET DRAWING 2007-06-07 3 of 3 S-1749-07
	REV DATE REVISIONS BY				