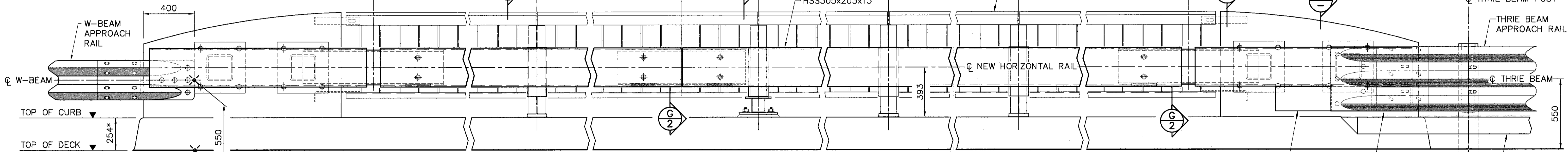


* TYPICAL DIMENSIONS FOR EXISTING VERTICAL BAR OR HORIZONTAL RAIL TYPE BRIDGERAILS. DIMENSIONS TO BE CONFIRMED ON A SITE SPECIFIC BASIS.

SEE GENERAL NOTES FOR DETAILS ON APPROACH RAIL

EXIT END FOR DIVIDED HWY

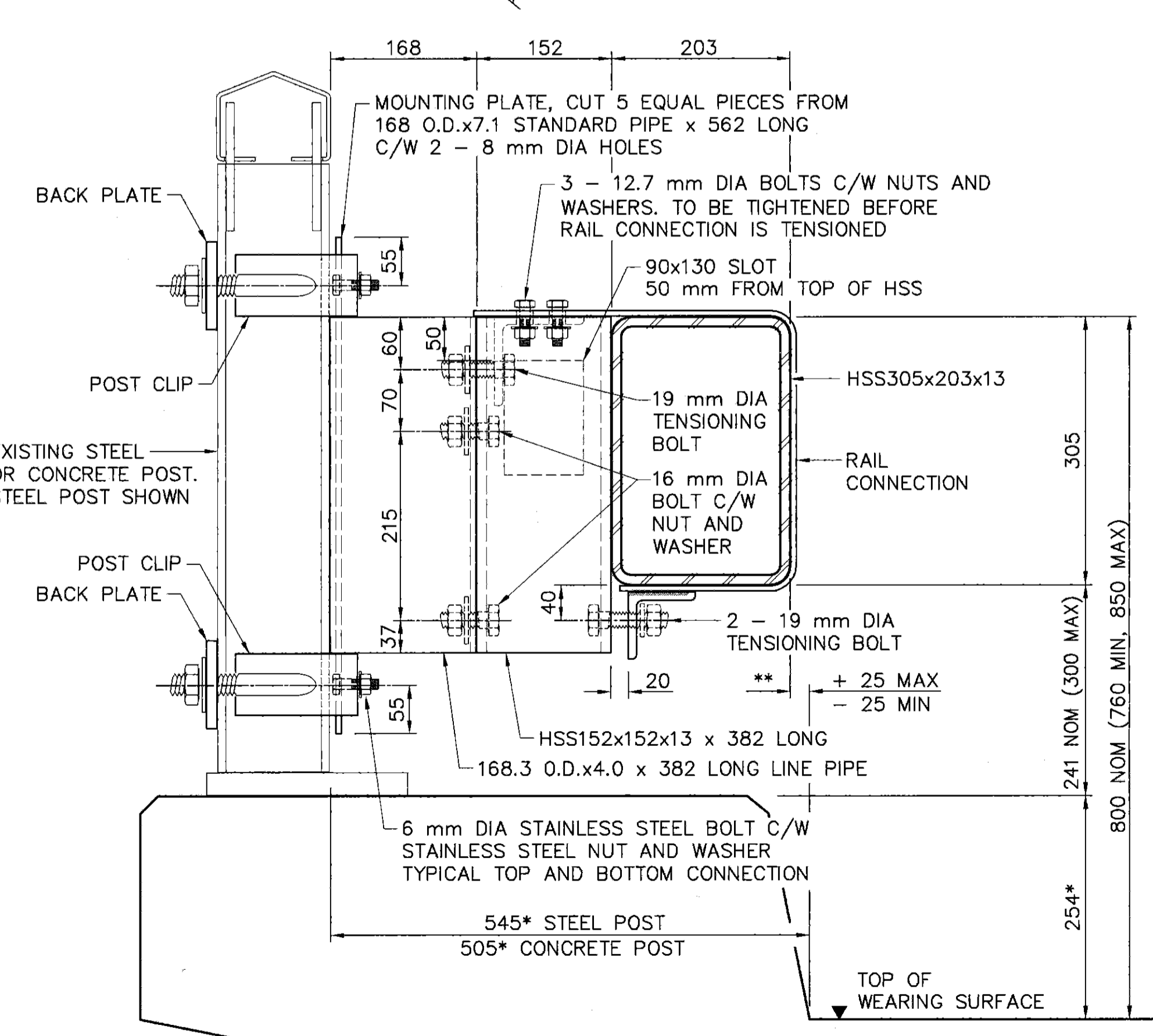
IF APPROACH RAIL IS REQUIRED AT THE EXIT CORNERS OF A DIVIDED HIGHWAY IT SHALL BE AS PER DWG S-1715-07 EXCEPT THAT THE FIRST BOLT HOLE FOR THE W-BEAM TO PARAPET CONNECTION SHALL BE 147 mm FROM THE END OF THE PARAPET RATHER THAN 541 mm AND THE FIRST TIMBER POST FOR THE APPROACH RAIL SHALL BE 2082 mm FROM END OF THE PARAPET RATHER THAN 1688 mm.



PLAN

1:15

NOTE: EXPANSION JOINTS SHALL BE PROVIDED AT ALL DECK JOINTS. SPACING BETWEEN EXPANSION JOINTS SHALL NOT EXCEED 45 m.



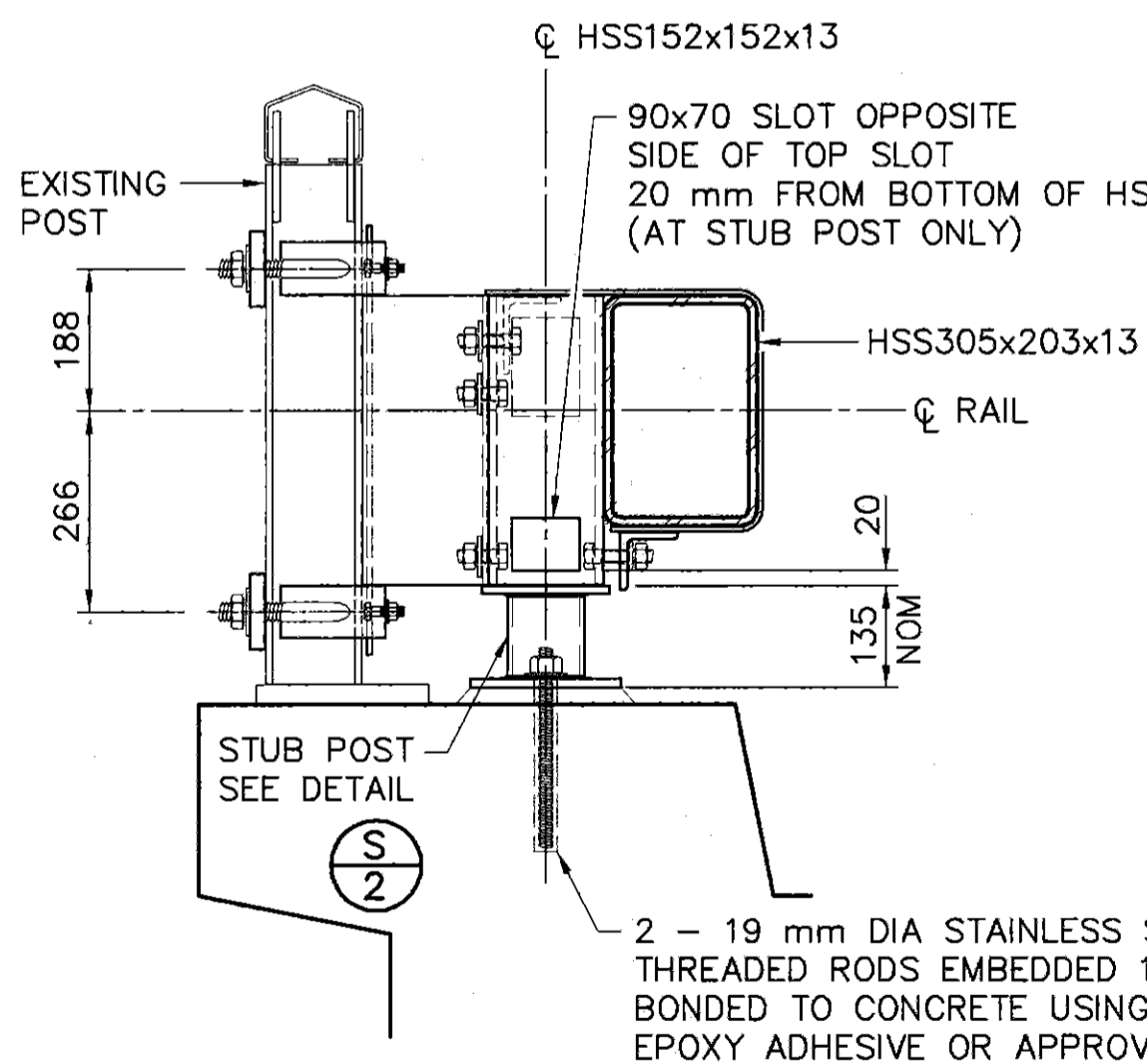
SECTION A

1:5

** FOR TYPICAL DIMENSIONS OF EXISTING BRIDGERAILS THE FACE OF THE NEW HORIZONTAL RAIL IS 22 mm INSIDE THE GUTTERLINE FOR STEEL POSTS AND 18 mm OUTSIDE THE GUTTERLINE FOR CONCRETE POSTS. DIMENSIONS TO BE CONFIRMED ON SITE SPECIFIC BASIS.

ELEVATION

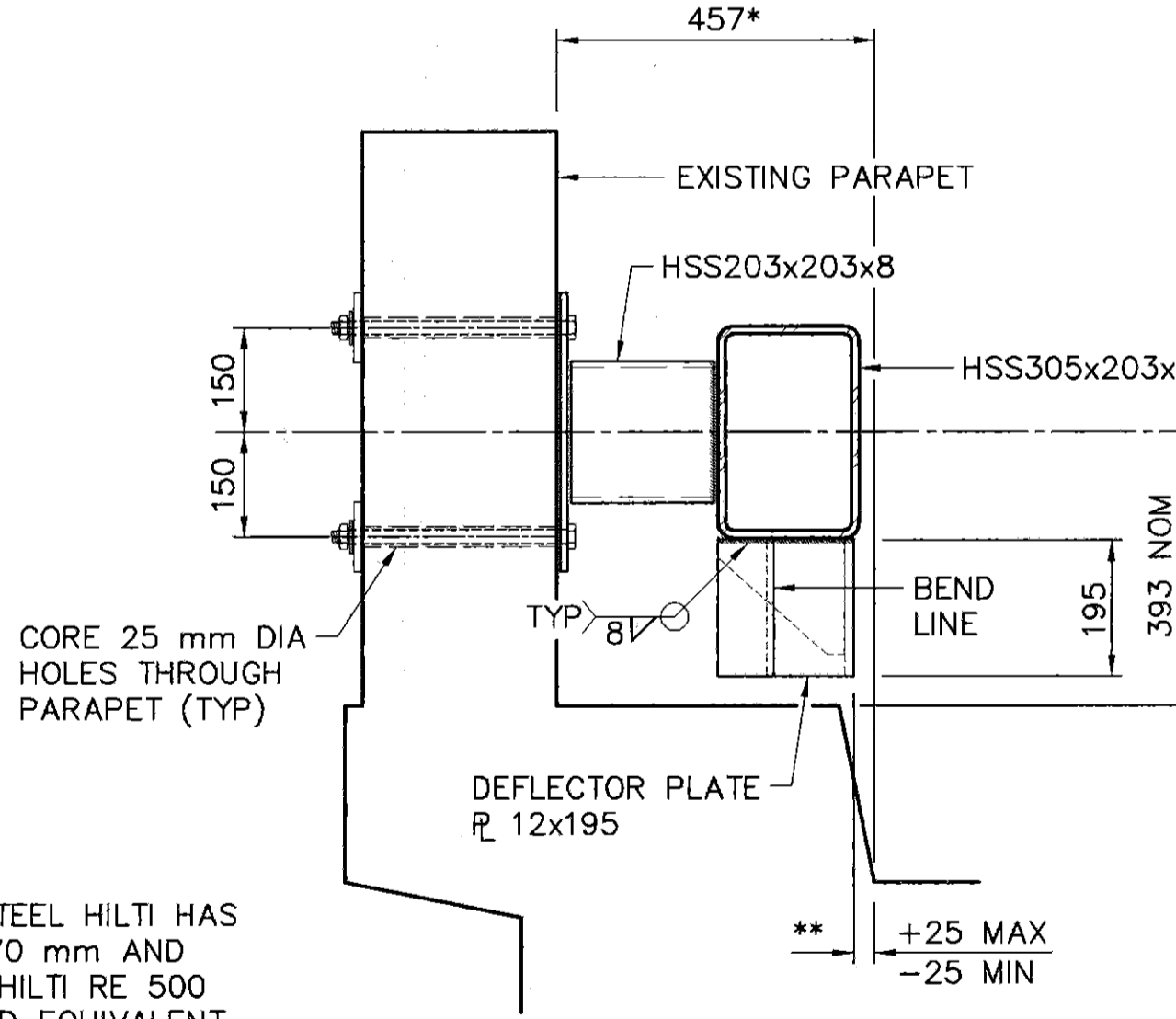
1:15



SECTION B

1:10

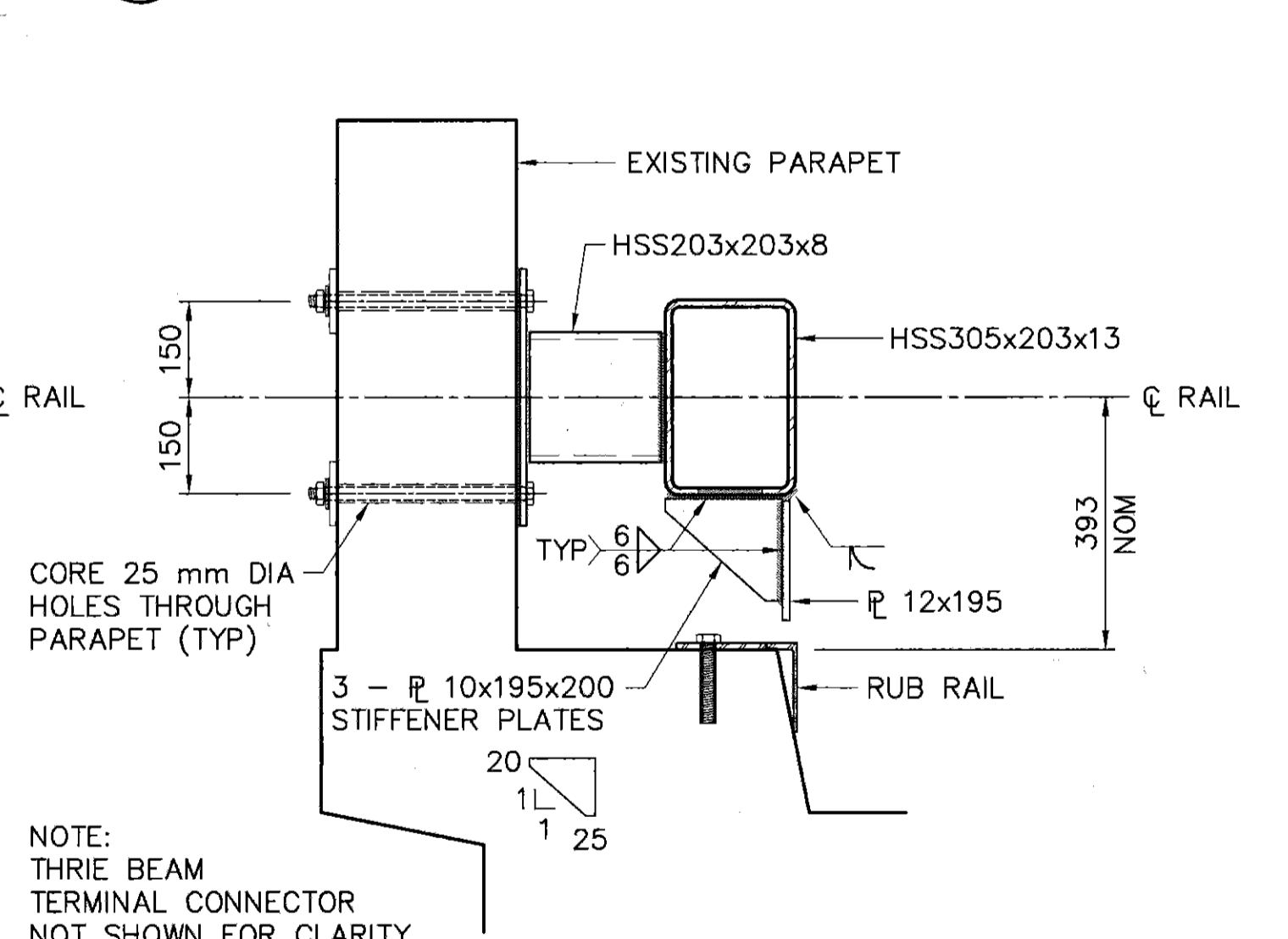
NEW STUB POST



SECTION C

1:10

DEFLECTOR PLATE



SECTION D

1:10

THRIE BEAM TRANSITION

FOR THRIE BEAM TERMINAL CONNECTION DETAIL, SEE DETAIL T 2

THRIE BEAM TERMINAL CONNECTOR

RUB RAIL FOR DETAILS, SEE DWG S-1752-07

● WORK THESE DRAWINGS TOGETHER: S-1750-07, S-1751-07 AND S-1752-07

JOB NO. 0705-190-00-00

	DESIGNER 	CHECKER 	RECOMMENDED DIRECTOR BRIDGE ENGINEERING 	
	PERMIT TO PRACTICE UMA ENGINEERING LTD. Signature: Date: Jan 9, 2008 PERMIT NUMBER: P329 The Association of Professional Engineers, Geologists and Geophysicists of Alberta.	DATE: Jan 9, 2008	APPROVED EXECUTIVE DIRECTOR TECHNICAL STANDARDS BRANCH 	
REV DATE REVISIONS BY			DATE: Feb 7, 2008	AI BAR CODE DATE: 2007-04-02 SHEET: 1 OF 3 DRAWING: S-1750-07