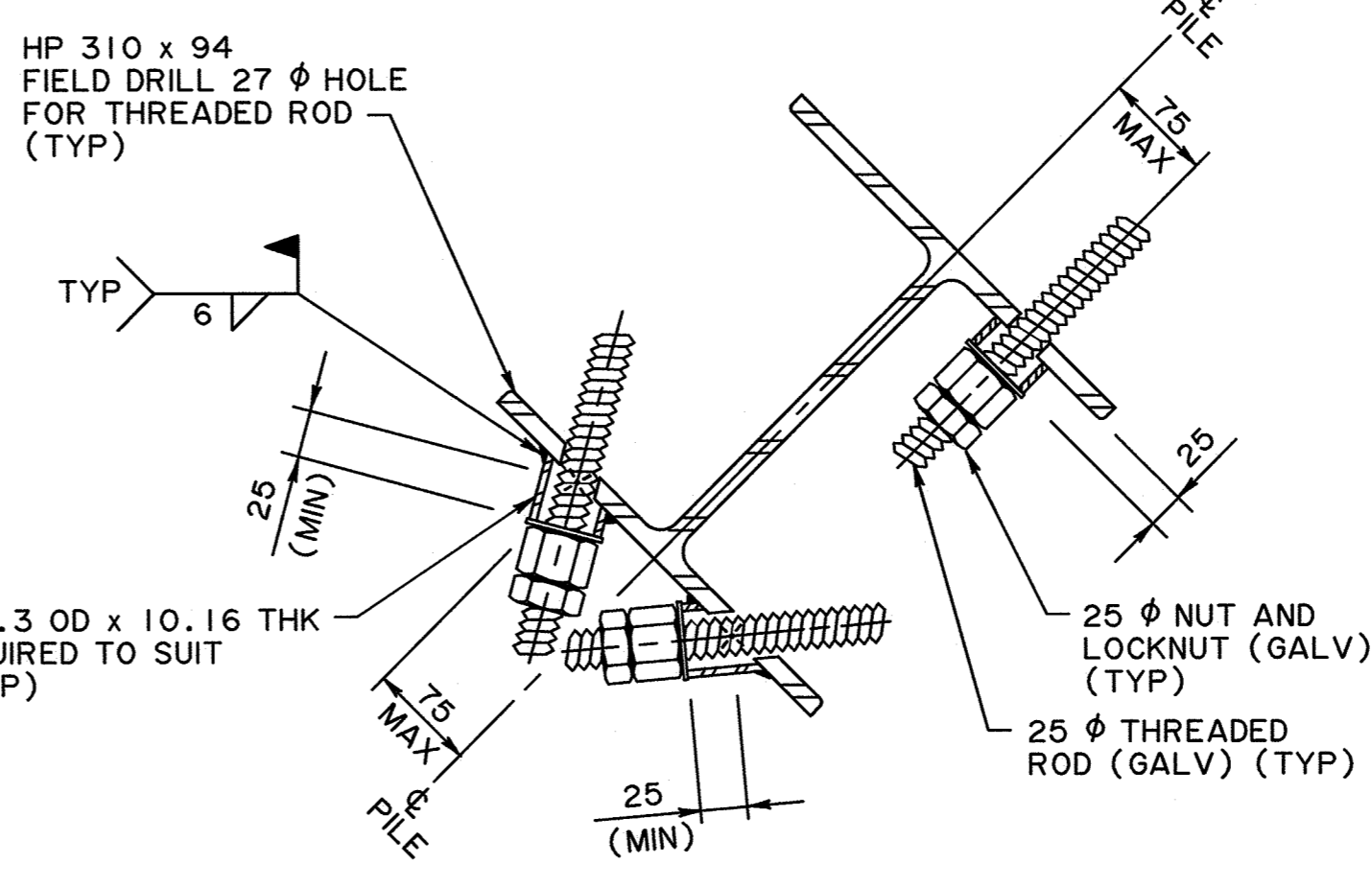
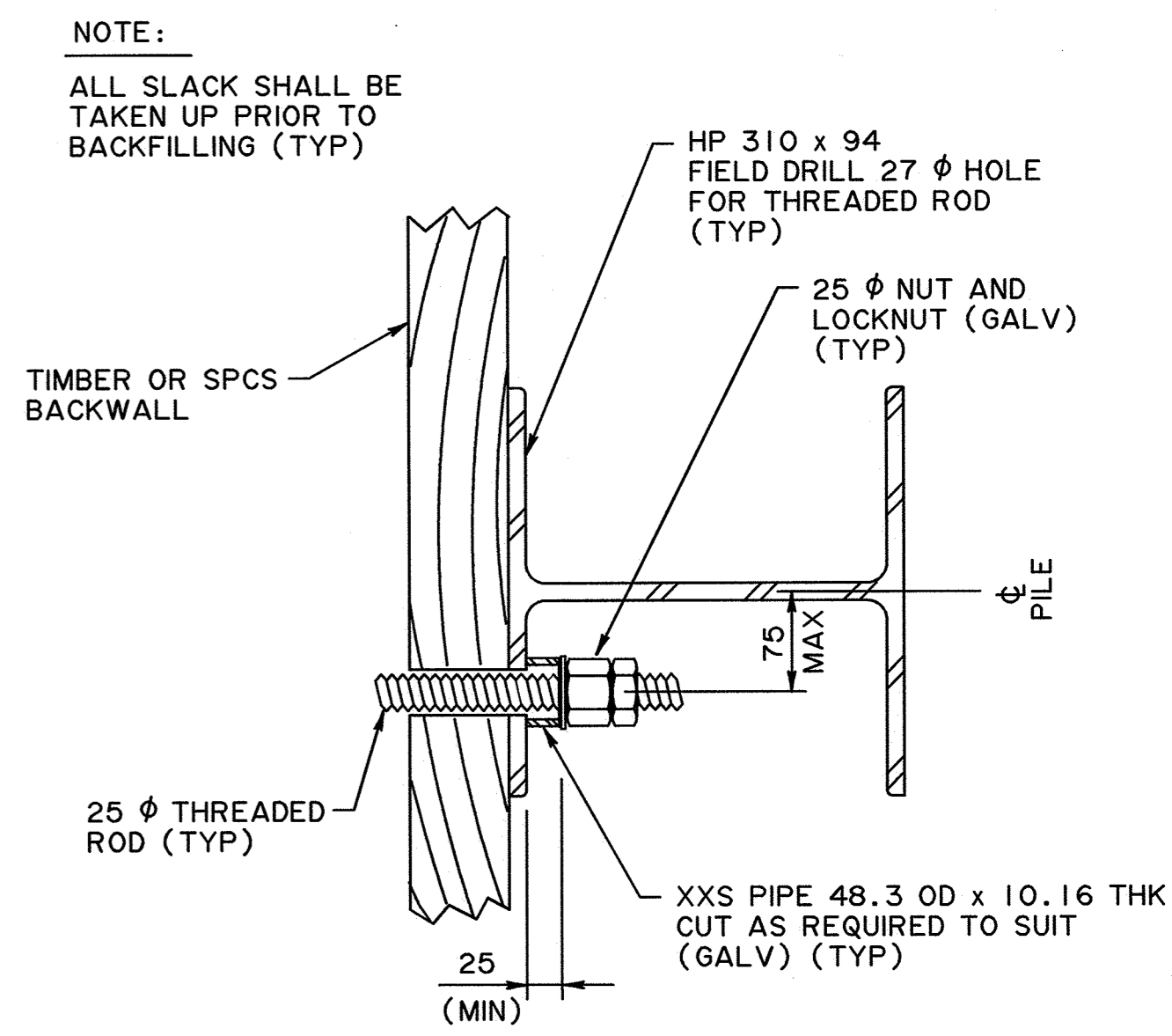


A BACKWALL - BACKWALL TYPE
 S-1753-08 (TREATED TIMBER PLANKING) 1:15
 S-1755-08

A BACKWALL - BACKWALL TYPE
 S-1753-08 (SPCS BACKWALL) 1:15
 S-1755-08

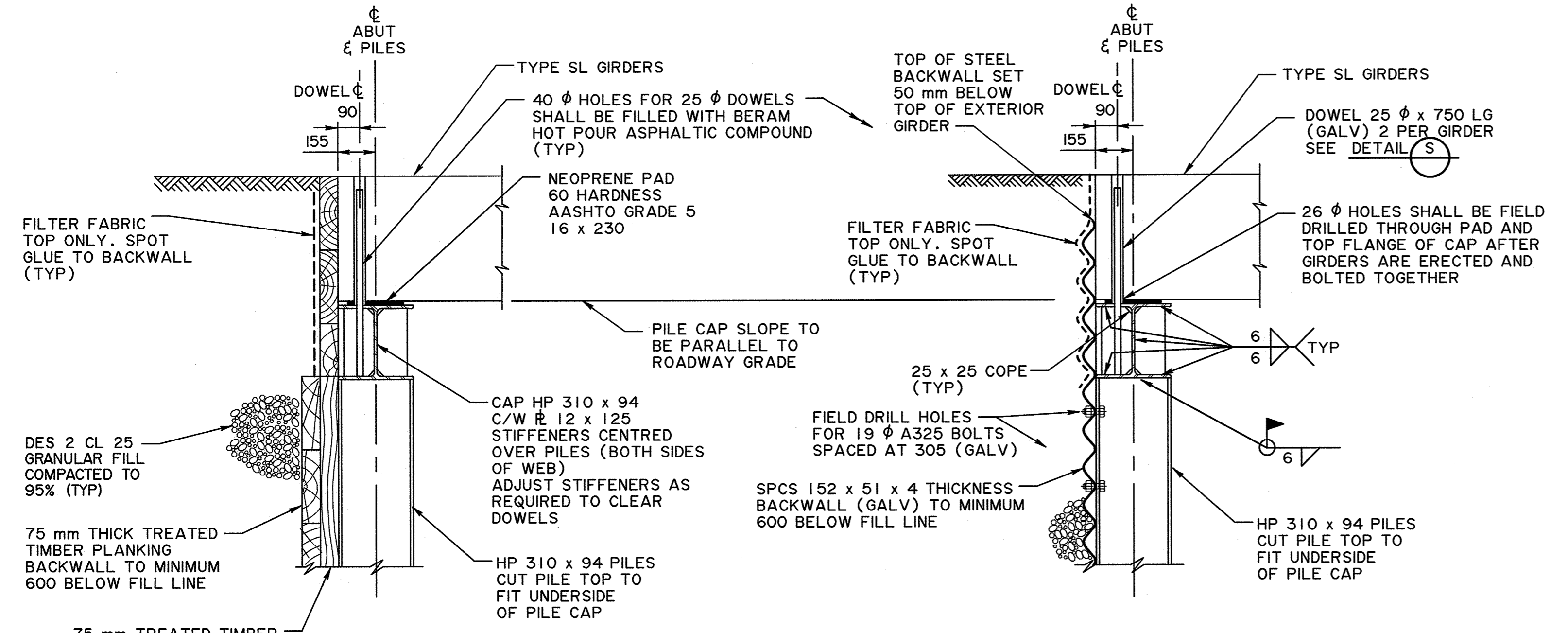


P DETAIL - ANCHOR PILE
 S-1753-08 1:5



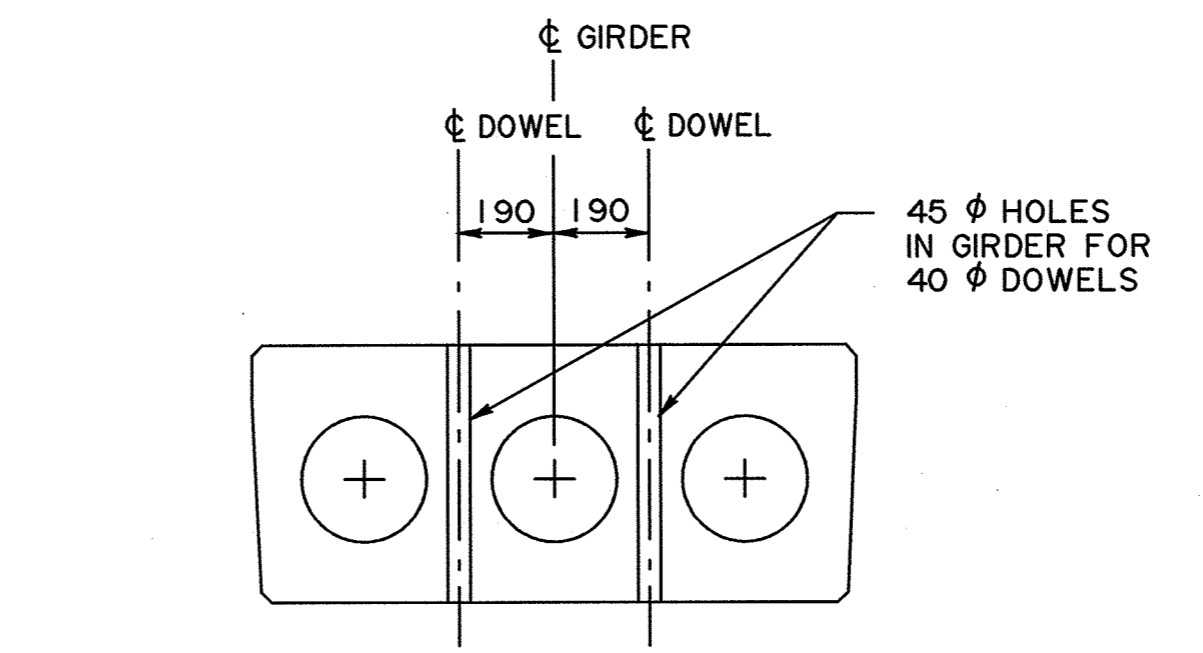
R DETAIL - WINGWALL PILE
 S-1753-08 1:5

NOTE:
 DOWEL HOLE LOCATION AND SIZE FOR BACKWALL TYPE ABUTMENTS DIFFER FROM THOSE SHOWN ON STANDARD DRAWINGS FOR SL GIRDERS

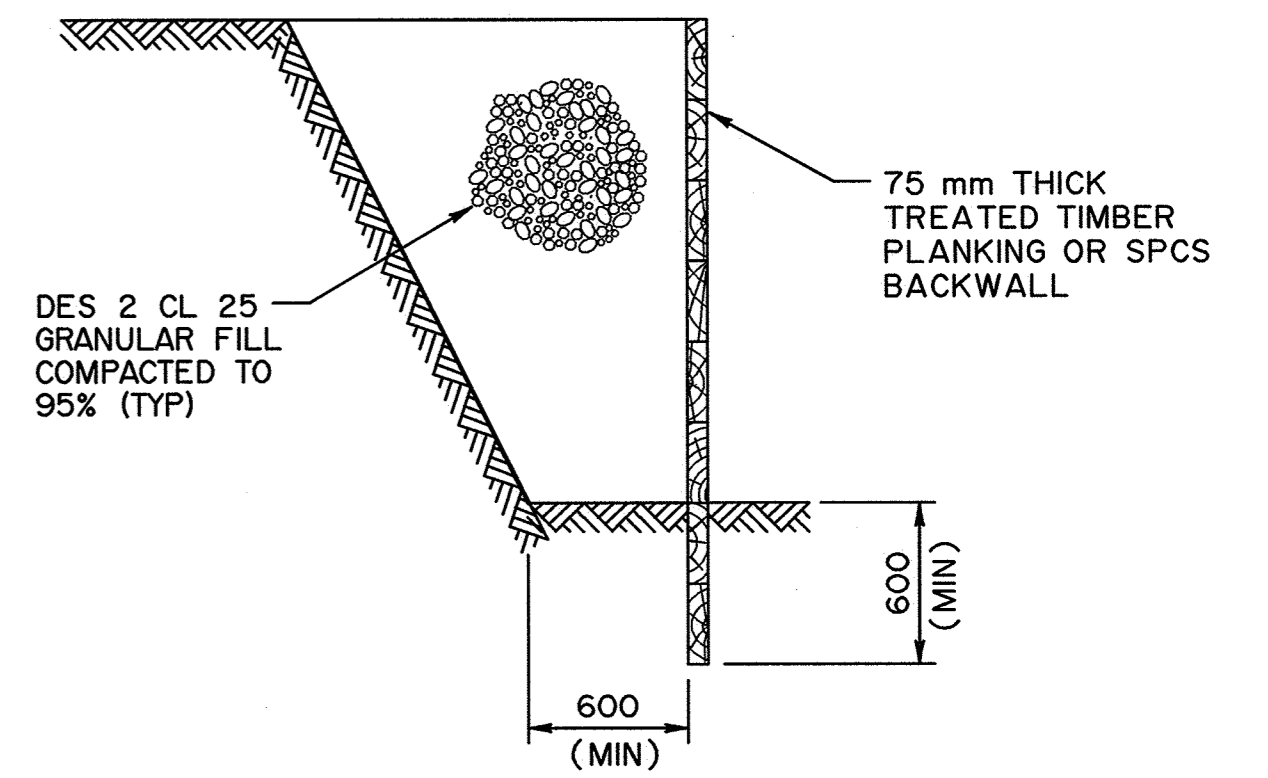


B BACKWALL - SPILL THROUGH TYPE
 S-1753-08 (TREATED TIMBER PLANKING) 1:15
 S-1755-08

B BACKWALL - SPILL THROUGH TYPE
 S-1753-08 (SPCS BACKWALL) 1:15
 S-1755-08



S DETAIL - SL GIRDER END VIEW
 (BACKWALL TYPE ABUTMENT) 1:15



BACKFILL DETAIL
 NTS

	PERMIT TO PRACTICE MOST ENGINEERING (2001) LTD. Signature: W. POLANICA Date: AUG. 15, 2008 PERMIT NUMBER: P 8859 The Association of Professional Engineers, Geologists and Geophysicists of Alberta	DESIGNER 	CHECKER 	2009-04-29 DOWEL HOLE REVISED AND NOTE ADDED CM	RECOMMENDED DIRECTOR BRIDGE ENGINEERING ORIGINAL SIGNED BY: TOM LOO APPROVED EXECUTIVE DIRECTOR TECHNICAL STANDARDS BRANCH ORIGINAL SIGNED BY: ALLAN KWAN	
	SL PRECAST GIRDER BRIDGES WITH STEEL SUBSTRUCTURES SHEET 4			AT BAR CODE DATE: 2008-08-18 SHEET: 4 OF 4 DRAWING: S-1756-08		