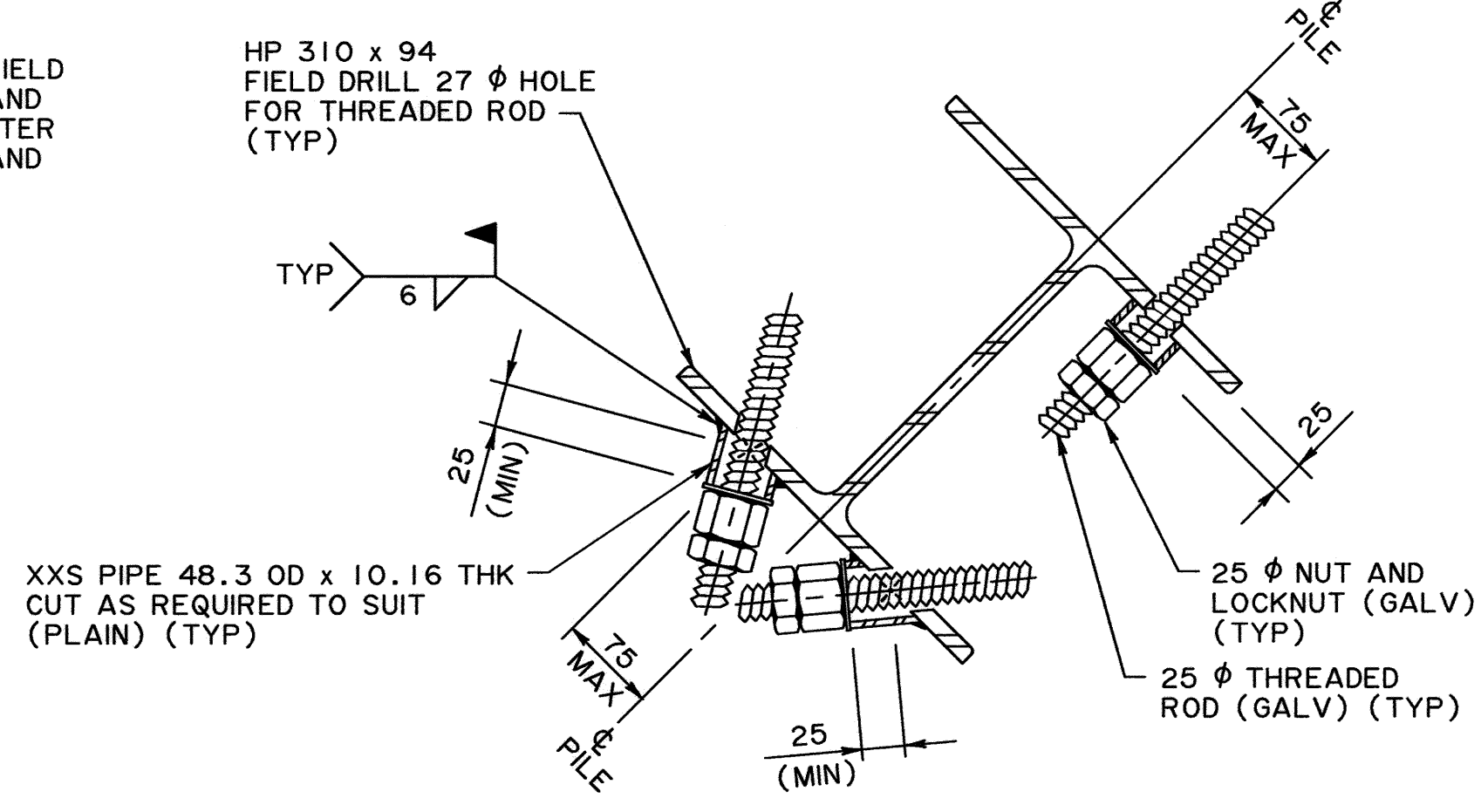


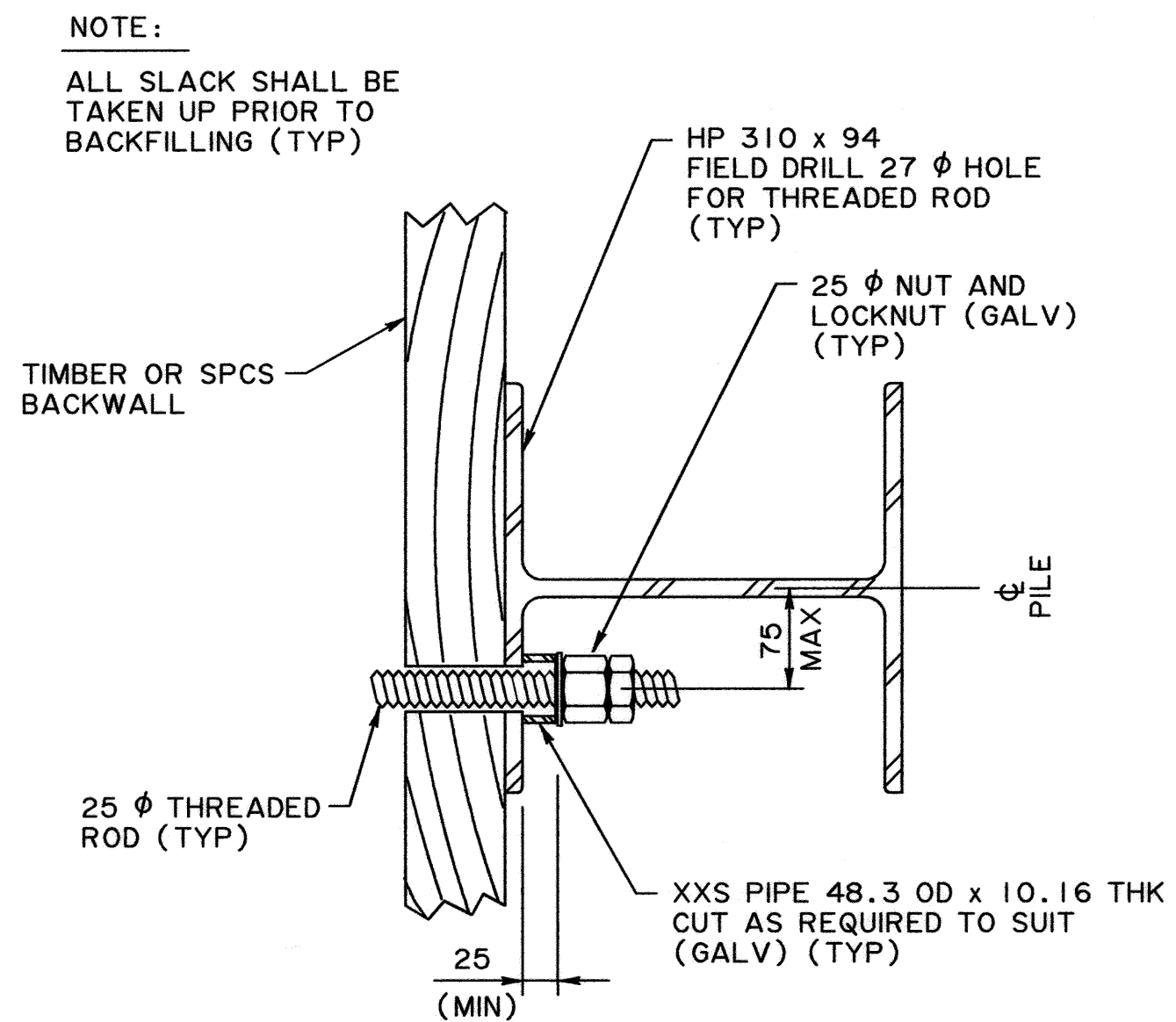
NOTE: TREATED TIMBER AND SPCS BACKWALL DETAILS SIMILAR EXCEPT AS NOTED

**A BACKWALL - BACKWALL TYPE**  
S-1753-08 (TREATED TIMBER PLANKING) 1:15  
S-1755-08

**A BACKWALL - BACKWALL TYPE**  
S-1753-08 (SPCS BACKWALL) 1:15  
S-1755-08

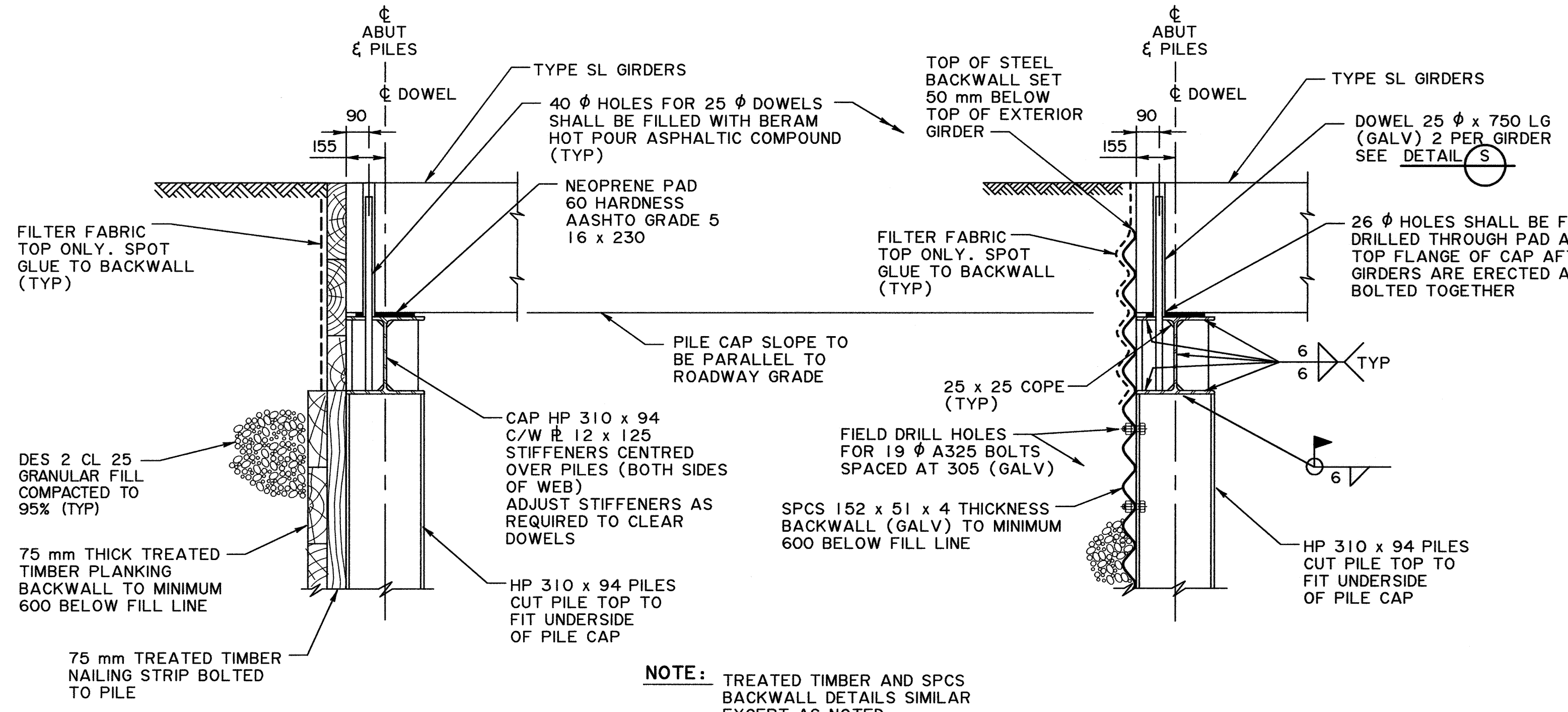


**P DETAIL - ANCHOR PILE**  
S-1753-08 1:5



**R DETAIL - WINGWALL PILE**  
S-1753-08 1:5

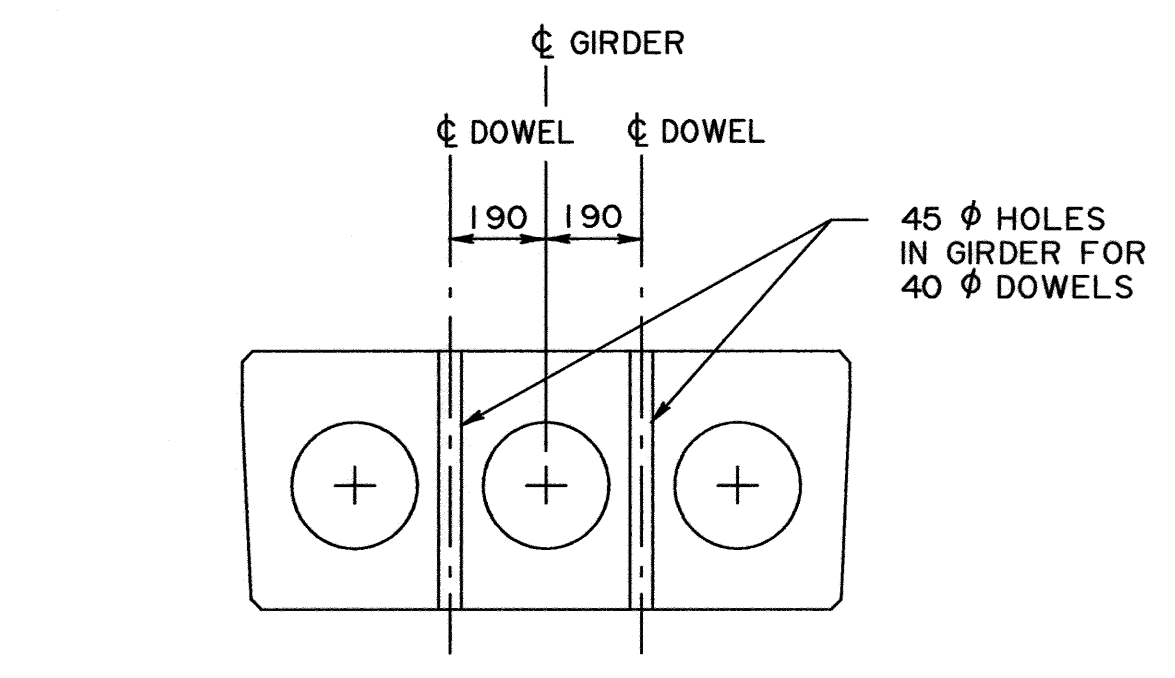
NOTE:  
ALL SLACK SHALL BE TAKEN UP PRIOR TO BACKFILLING (TYP)



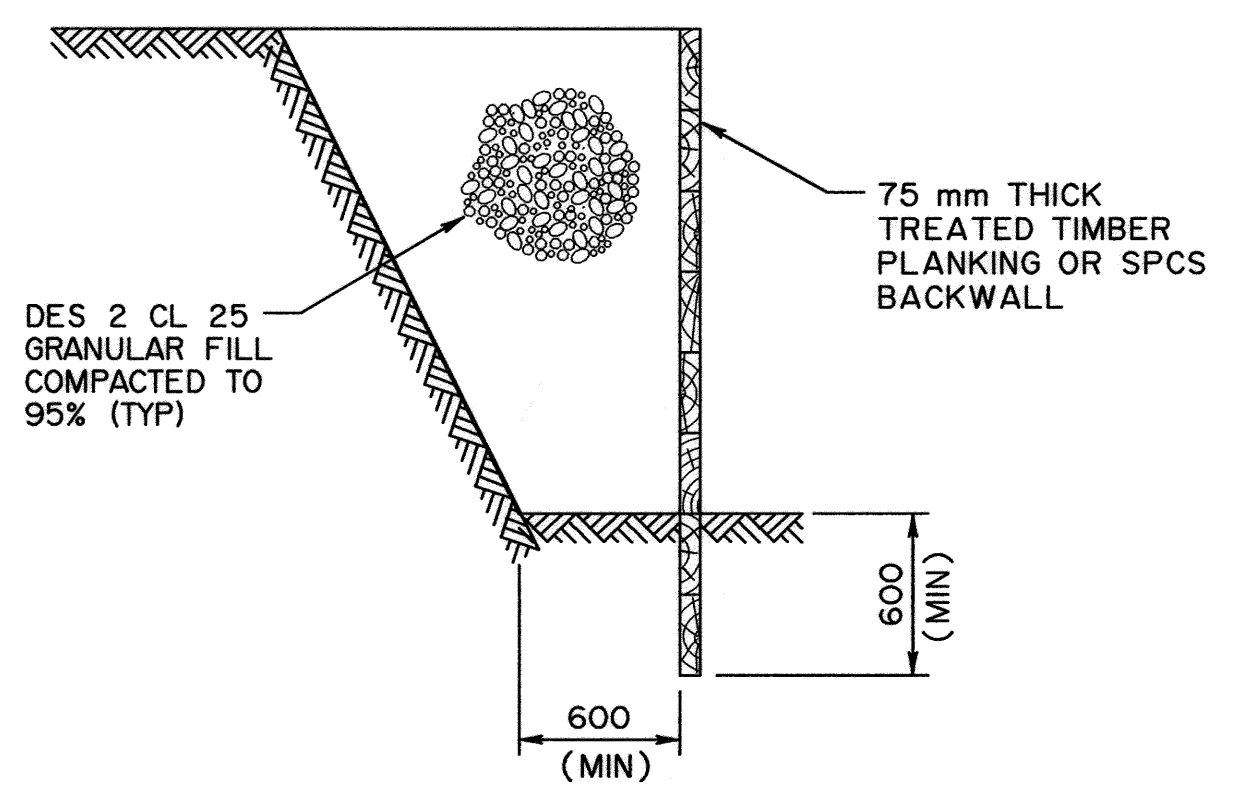
NOTE: TREATED TIMBER AND SPCS BACKWALL DETAILS SIMILAR EXCEPT AS NOTED

**B BACKWALL - SPILL THROUGH TYPE**  
S-1753-08 (TREATED TIMBER PLANKING) 1:15  
S-1755-08

**B BACKWALL - SPILL THROUGH TYPE**  
S-1753-08 (SPCS BACKWALL) 1:15  
S-1755-08



**S DETAIL - SL GIRDER END VIEW**  
(BACKWALL TYPE ABUTMENT) 1:15



**BACKFILL DETAIL**  
NTS

	PERMIT TO PRACTICE MOST ENGINEERING (2001) LTD. Signature: <i>[Signature]</i> Date: Aug 15, 2008 PERMIT NUMBER: P 8859 The Association of Professional Engineers, Geologists and Geophysicists of Alberta.	DESIGNER  DATE: Aug 15, 2008	CHECKER  DATE: 08/15/2008	RECOMMENDED DIRECTOR BRIDGE ENGINEERING 	APPROVED EXECUTIVE DIRECTOR TECHNICAL STANDARDS BRANCH  DATE: Sept 8/08	<b>Alberta Transportation</b>			
						<b>SL PRECAST GIRDER BRIDGES WITH STEEL SUBSTRUCTURES SHEET 4</b>			
		AT BAR CODE	DATE	SHEET	DRAWING				
			2008-08-18	4 of 4	S-1756-08				