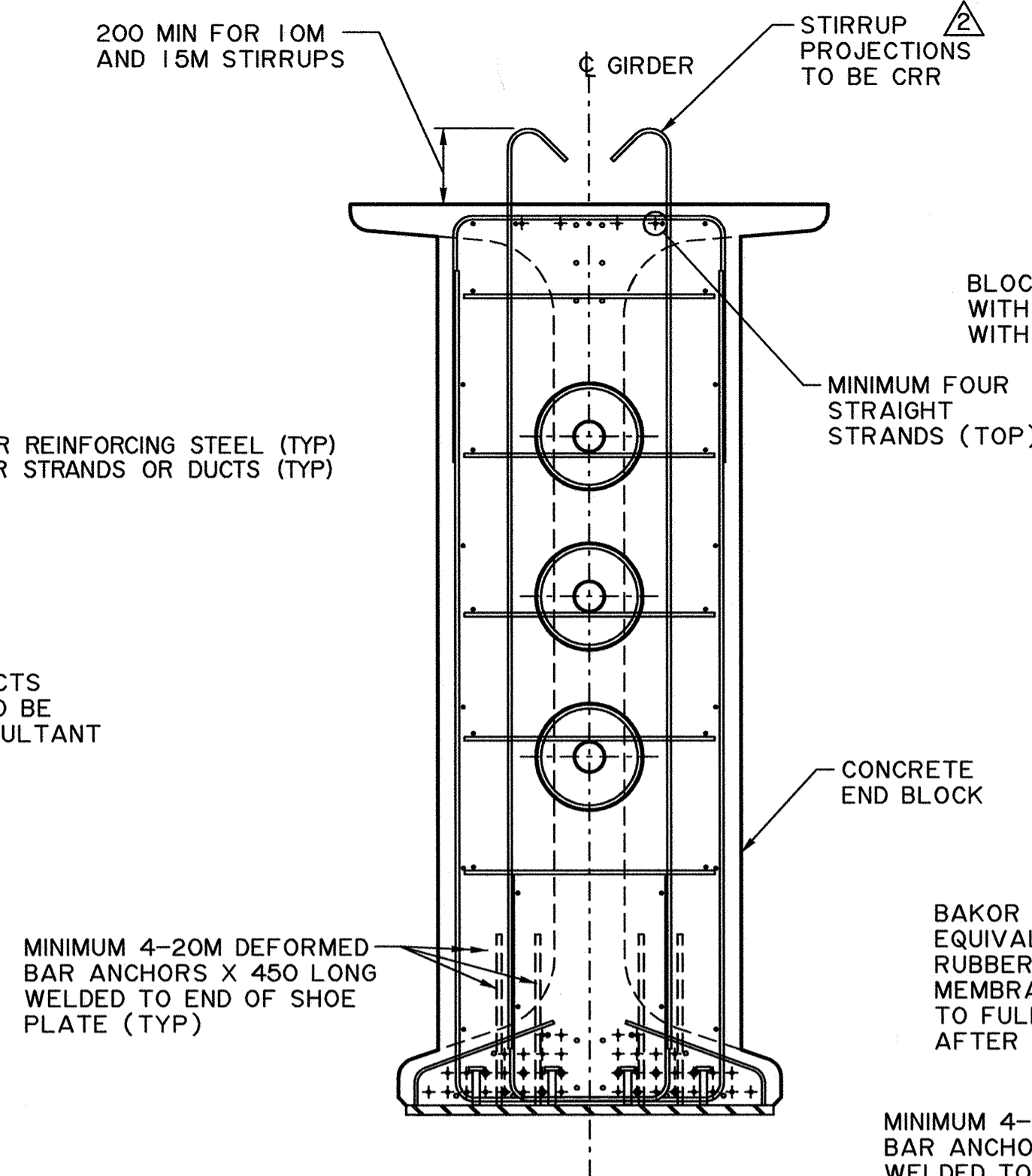
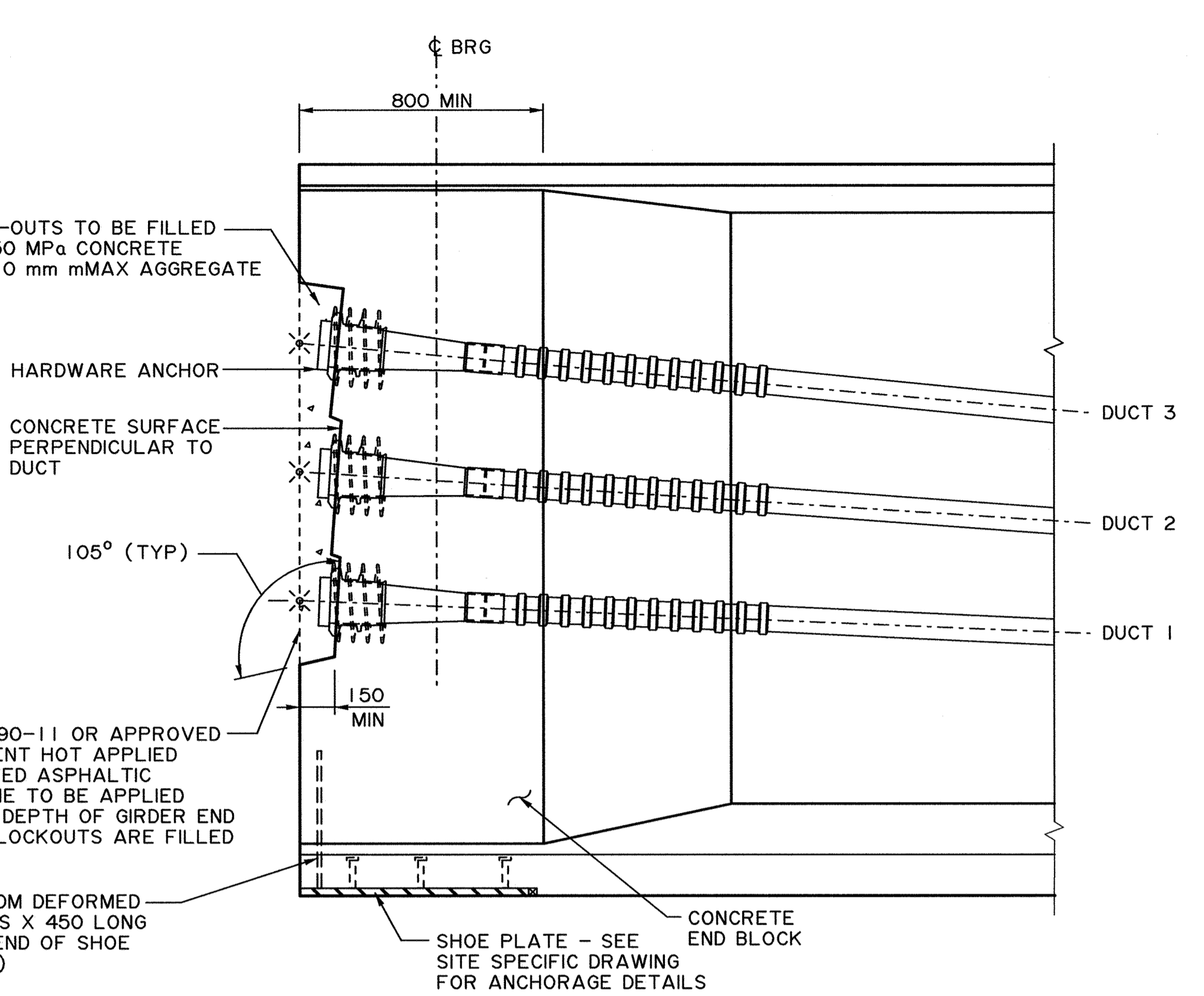


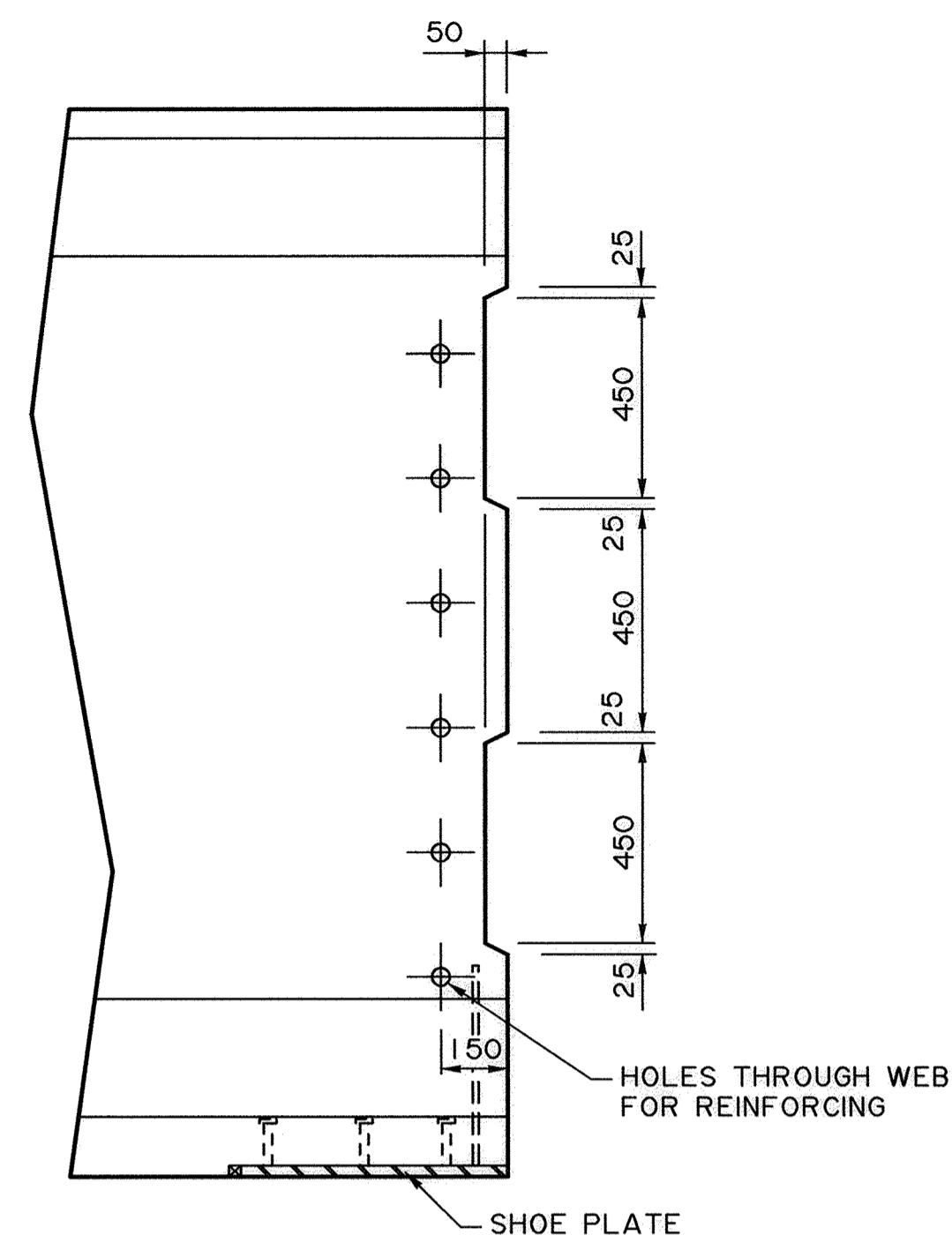
POST-TENSIONED GIRDER MIDSPAN SECTION
1:15



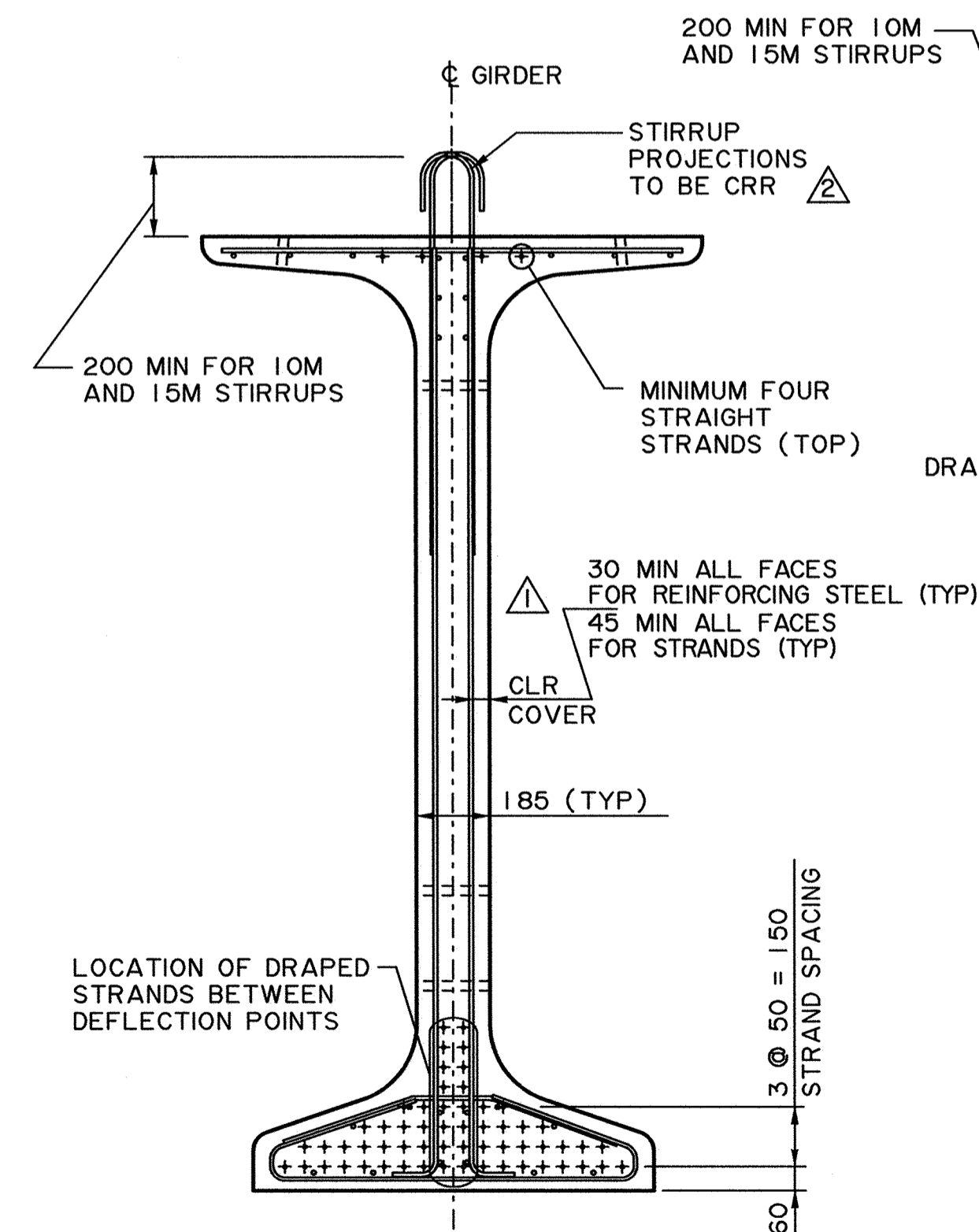
POST-TENSIONED GIRDER ABUTMENT END SECTION
1:15



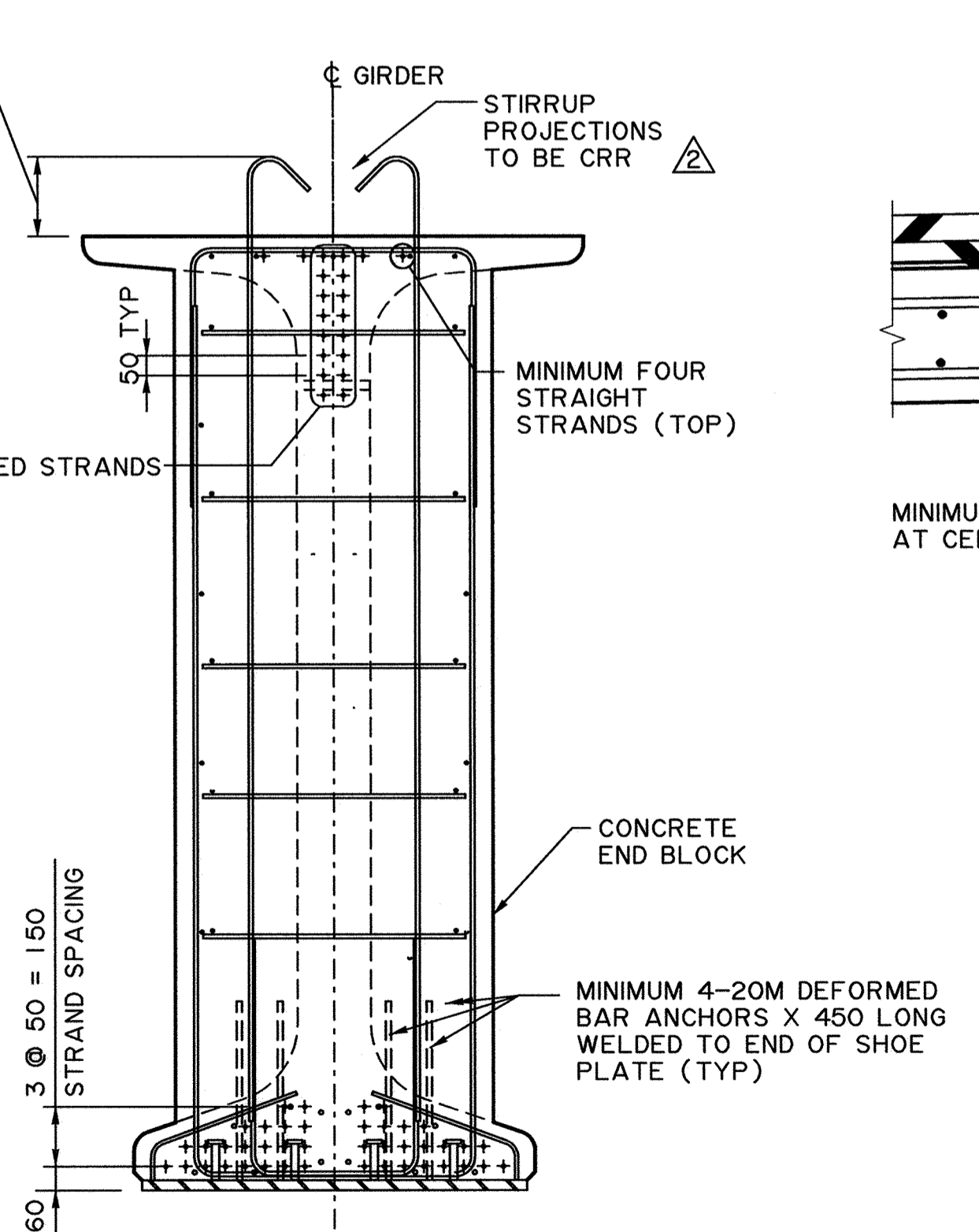
POST-TENSIONED AND PRE-TENSIONED GIRDER ABUTMENT END ELEVATION
(POST-TENSIONED GIRDER SHOWN)
1:15



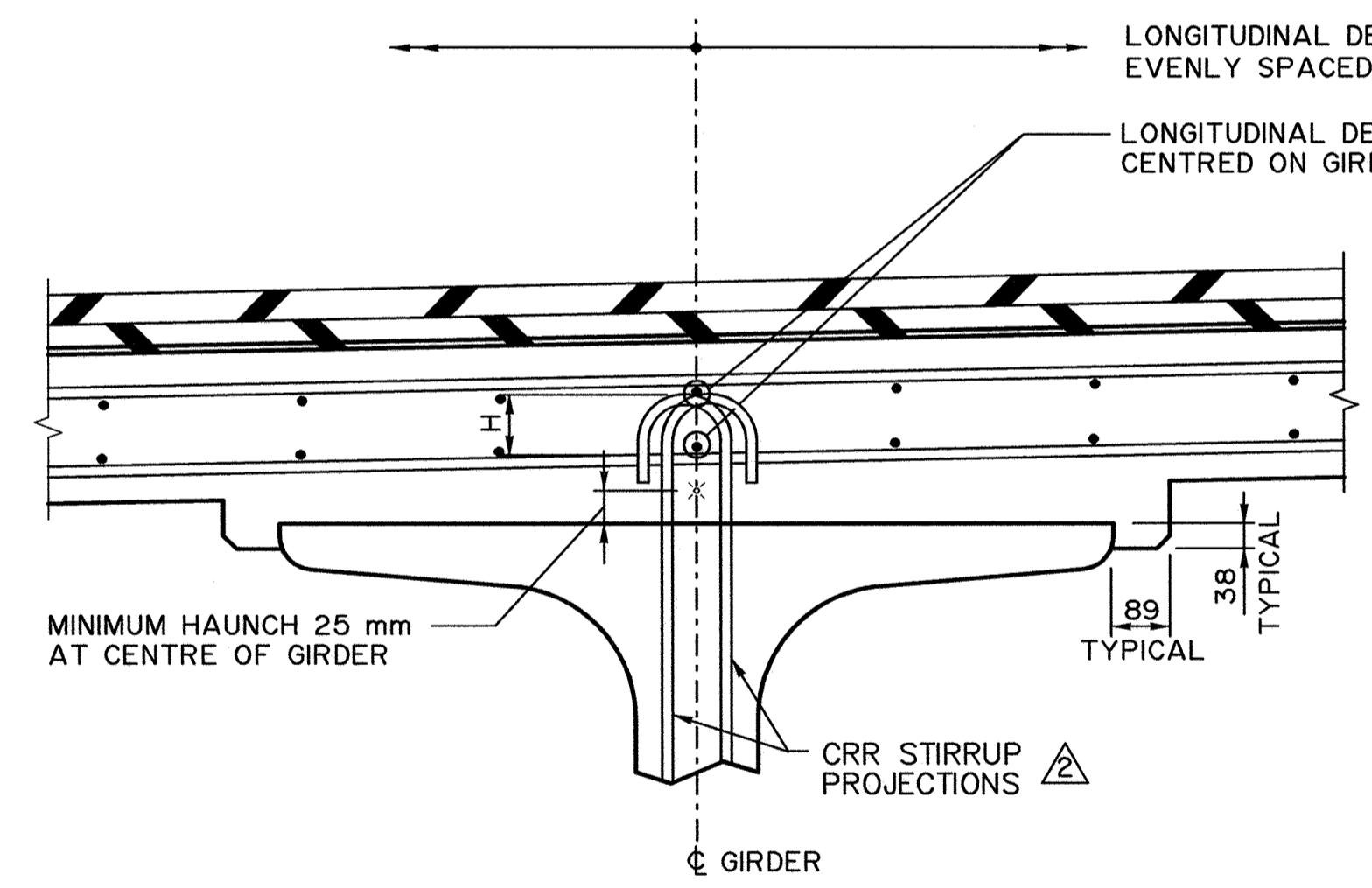
GIRDER END DETAIL FOR CASTING INTO DIAPHRAGM
1:15



PRE-TENSIONED GIRDER MIDSPAN SECTION
1:15

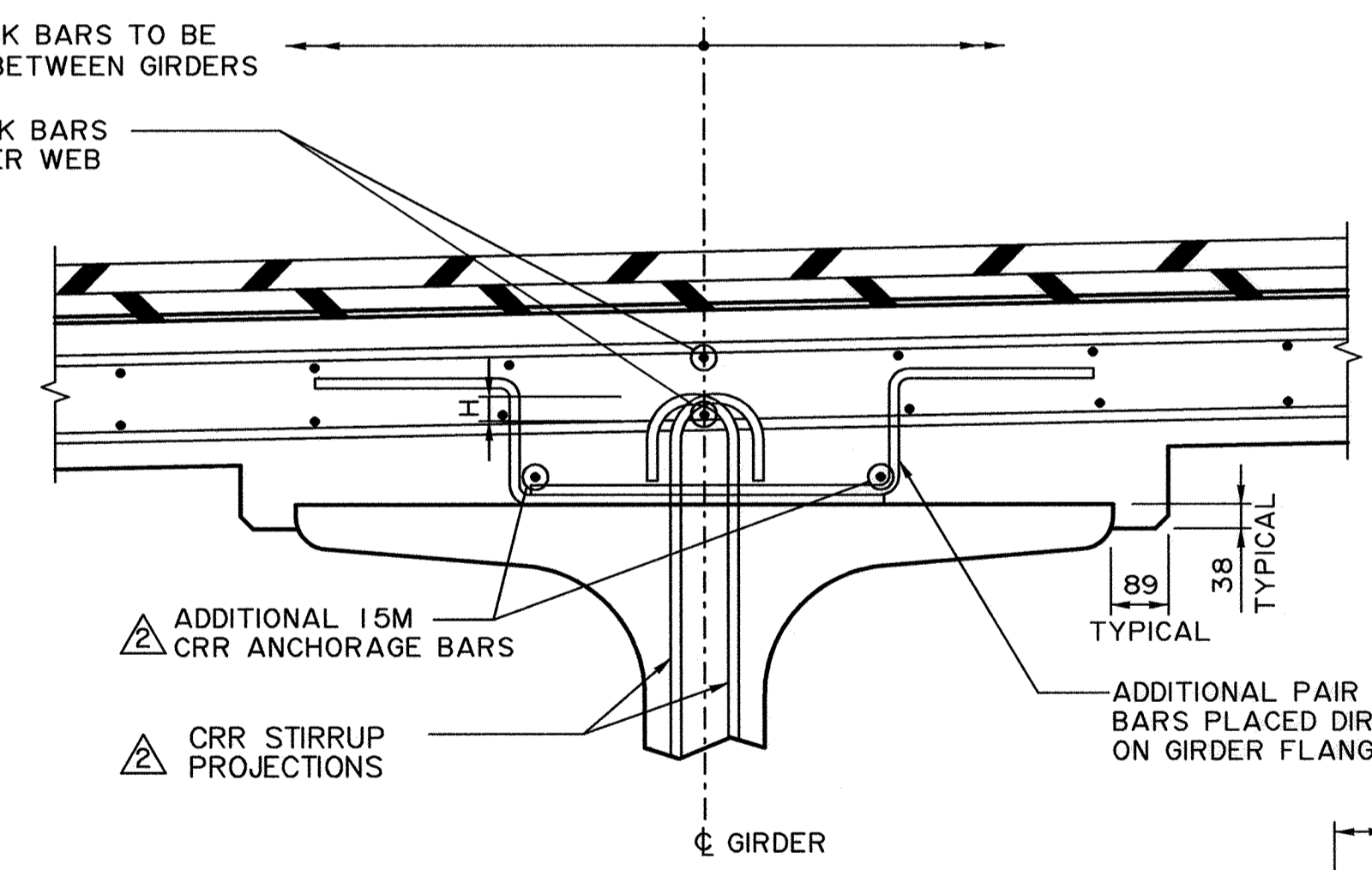


PRE-TENSIONED GIRDER CONVENTIONAL ABUTMENT END SECTION
1:15



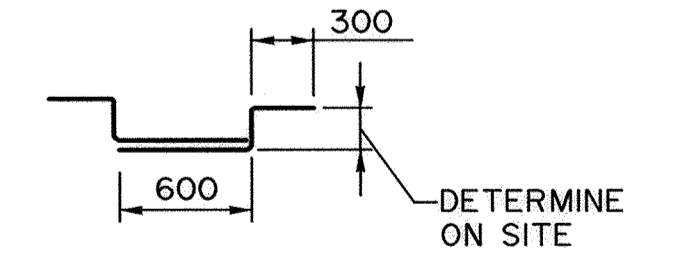
IF H ≥ 40 mm NO ADDITIONAL CRR HAIRPIN BARS REQUIRED

DECK HAUNCH DETAIL NO HAT BARS
1:10



IF H < 40 mm ADDITIONAL CRR HAIRPIN BARS REQUIRED

DECK HAUNCH DETAIL WITH HAT BARS
1:10



DETAILS SHOWN ARE CONCEPTUAL AND REPRESENT DEPARTMENT PRACTICES AS REFERENCED IN THE BRIDGE STRUCTURES DESIGN CRITERIA. FULL RESPONSIBILITY FOR DESIGN OF DETAILS REMAINS WITH THE CONSULTANT.

NOT FOR CONSTRUCTION

RECOMMENDED DIRECTOR BRIDGE ENGINEERING			
APPROVED EXECUTIVE DIRECTOR TECHNICAL STANDARDS BRANCH			
2012-01-18	CONCRETE END BLOCK & 180° CRR STIRRUP PROJECTIONS	CM	
2009-10-28	REBAR AND STRAND MINIMUM CLEARANCE	CM	
REV	DATE	REVISIONS	BY

Alberta Transportation

**NU GIRDER BRIDGES
TYPICAL DETAILS SHEET 2**

DATE	SHEET	DRAWING
2009-01-23	2 OF 5	S-1758-08

NH 2012-01-18 S-1758-08-RV2.DGN