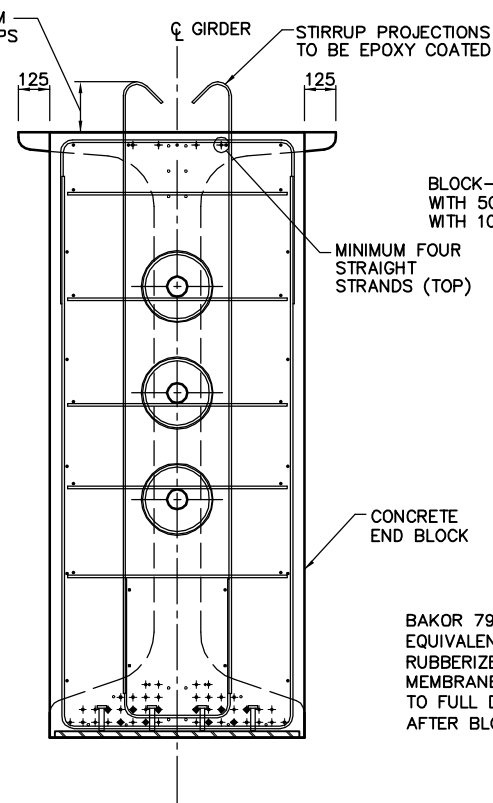


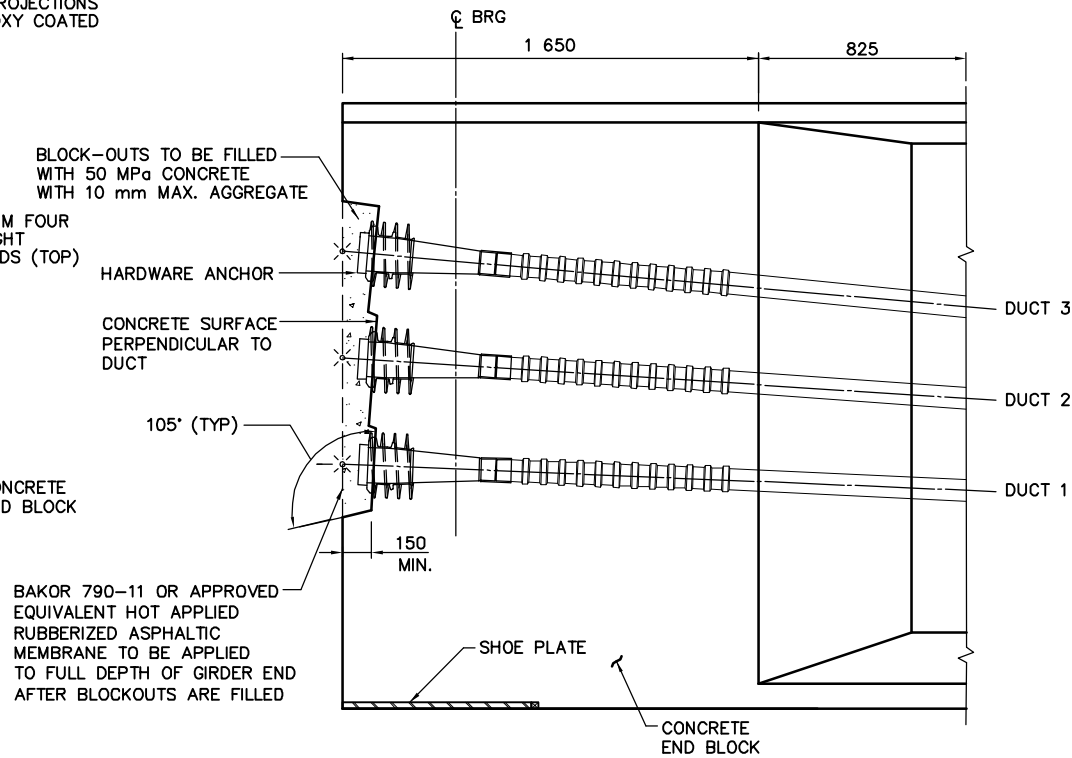
POST-TENSIONED GIRDER MIDSPAN SECTION

1:15



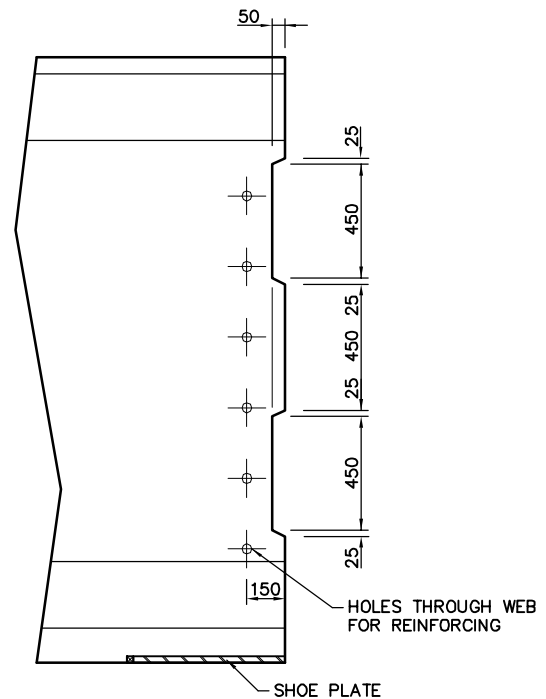
POST-TENSIONED GIRDER ABUTMENT END SECTION

1:15



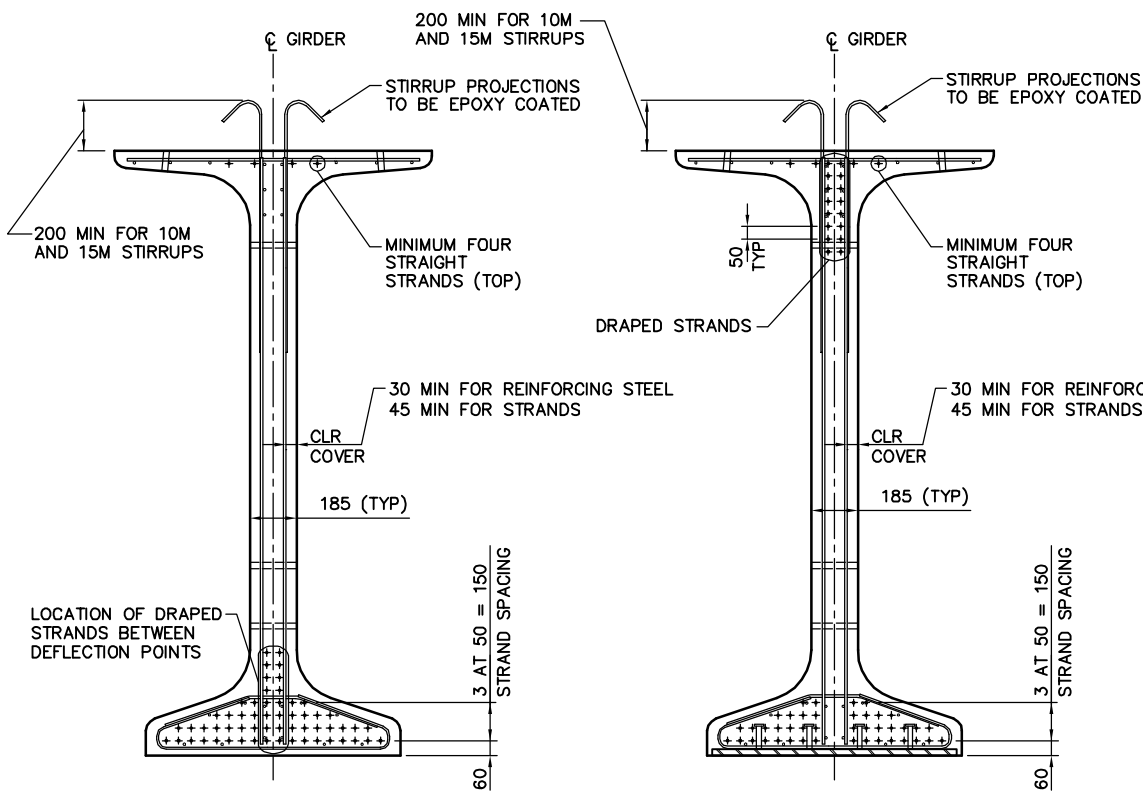
POST-TENSIONED GIRDER ABUTMENT END ELEVATION

1:15



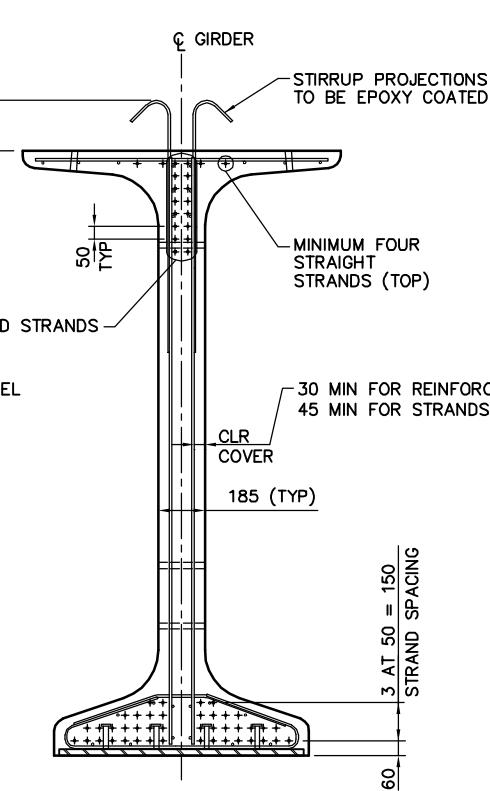
GIRDER END DETAIL FOR CASTING INTO DIAPHRAGM

1:15



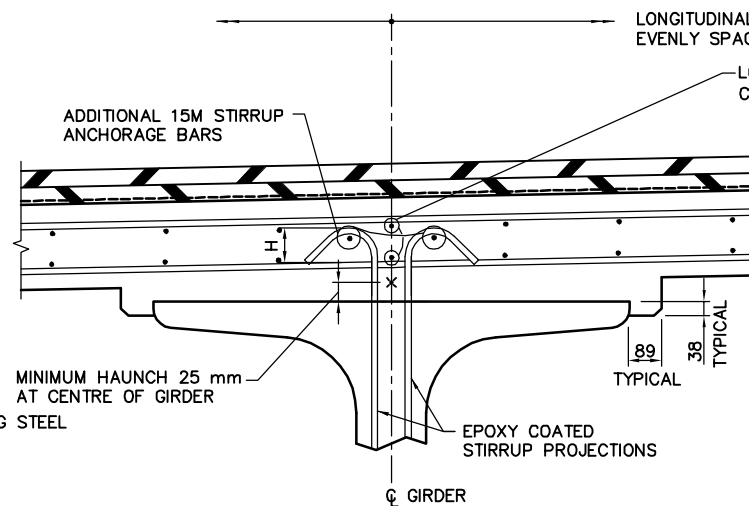
PRE-TENSIONED GIRDER MIDSPAN SECTION

1:15



PRE-TENSIONED GIRDER END SECTION

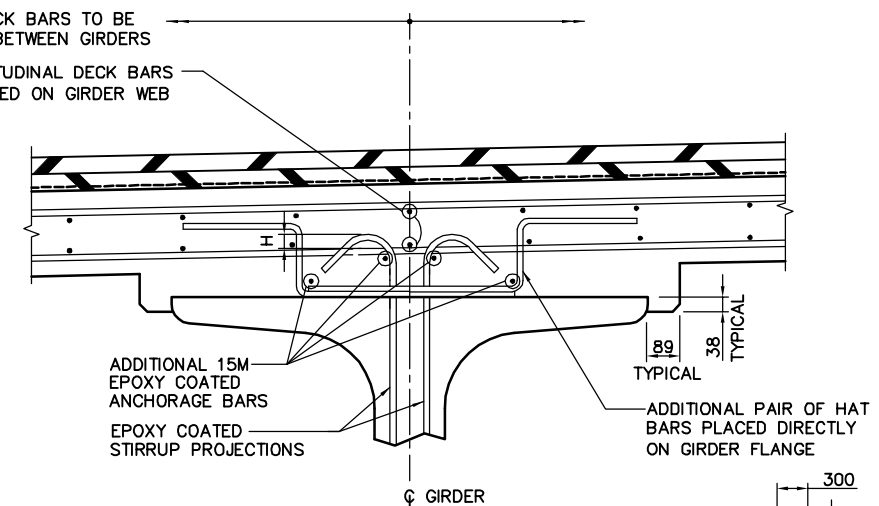
1:15



IF $H \geq 40$ mm NO ADDITIONAL EPOXY COATED HAIRPIN BARS REQUIRED

DECK HAUNCH DETAIL NO HAT BARS

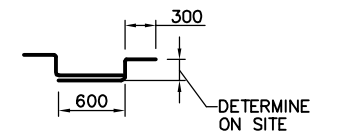
1:10



IF $H < 40$ mm ADDITIONAL EPOXY COATED HAIRPIN BARS REQUIRED

DECK HAUNCH DETAIL WITH HAT BARS

1:10



DETAILS SHOWN ARE CONCEPTUAL AND REPRESENT DEPARTMENT PRACTICES AS REFERENCED IN THE BRIDGE STRUCTURES DESIGN CRITERIA. FULL RESPONSIBILITY FOR DESIGN OF DETAILS REMAINS WITH THE CONSULTANT.

NOT FOR CONSTRUCTION

RECOMMENDED DIRECTOR BRIDGE ENGINEERING	
APPROVED EXECUTIVE DIRECTOR TECHNICAL STANDARDS BRANCH	
REV	DATE
REVISIONS	BY
DATE	DATE

Albarta Transportation

**NU GIRDER BRIDGES
TYPICAL DETAILS SHEET 2**

DATE 2009.01.23 SHEET 2 of 5 DRAWING S-1758-08