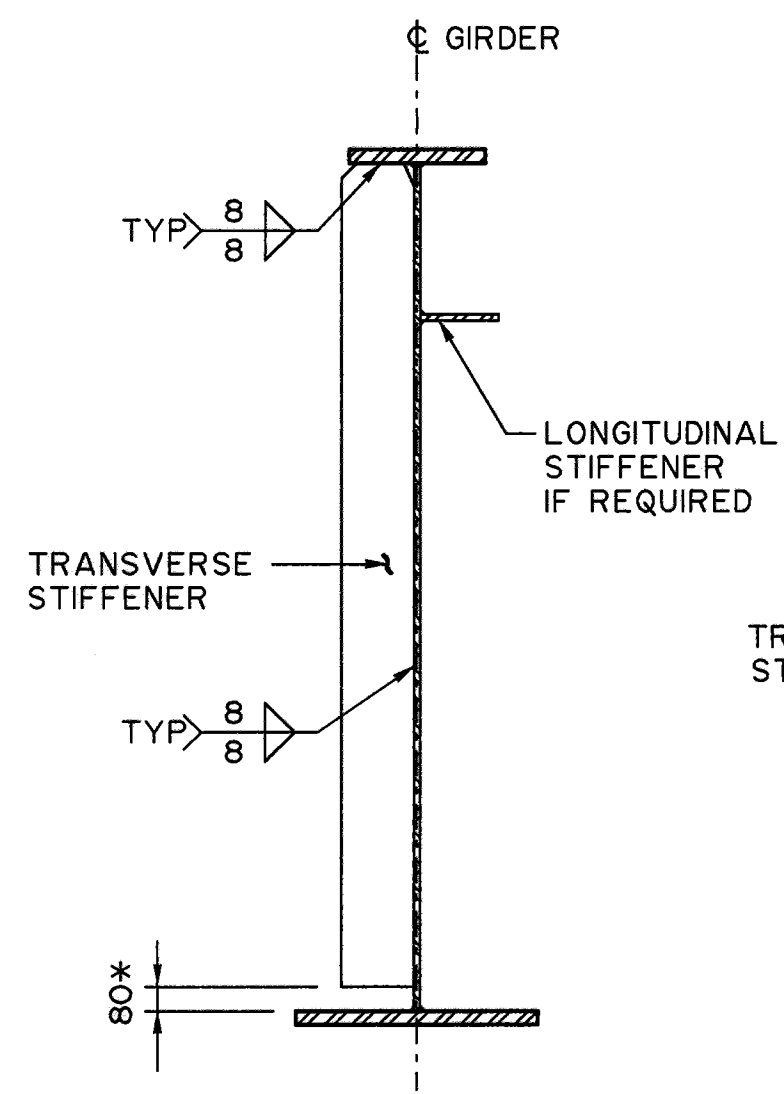
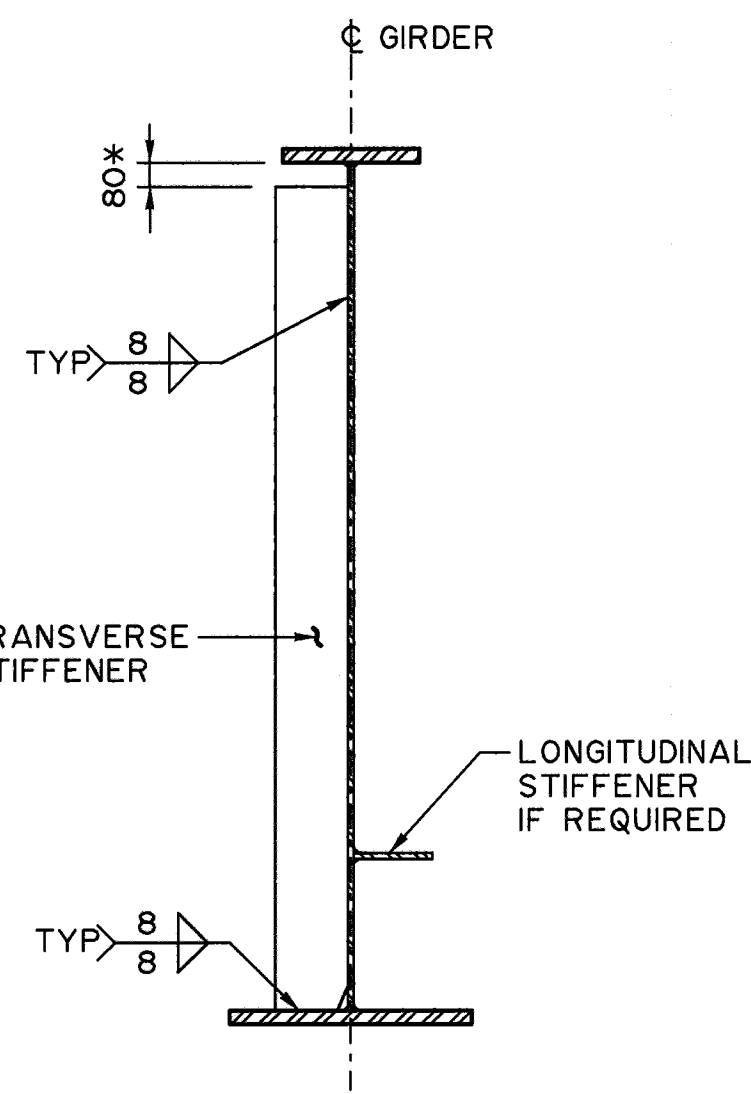


BEARING & JACKING STIFFENERS

1:25



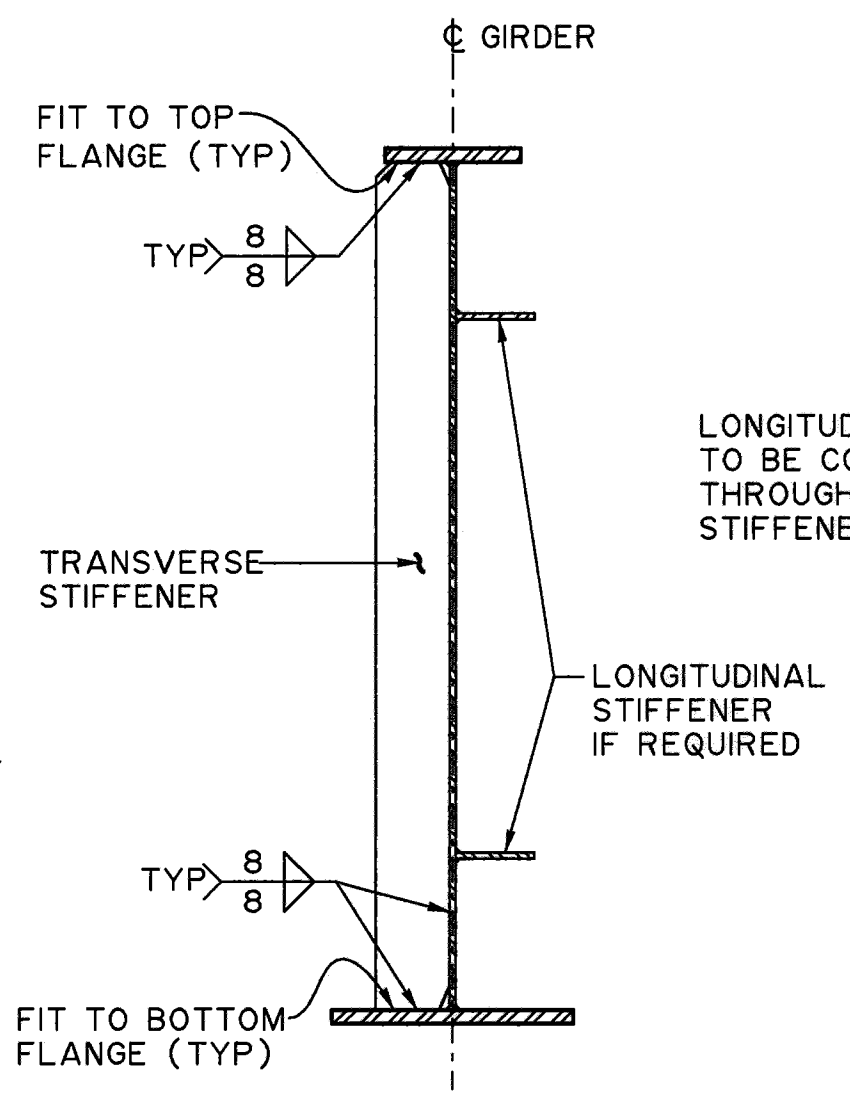
TOP FLANGE COMPRESSION REGION



BOTTOM FLANGE COMPRESSION REGION

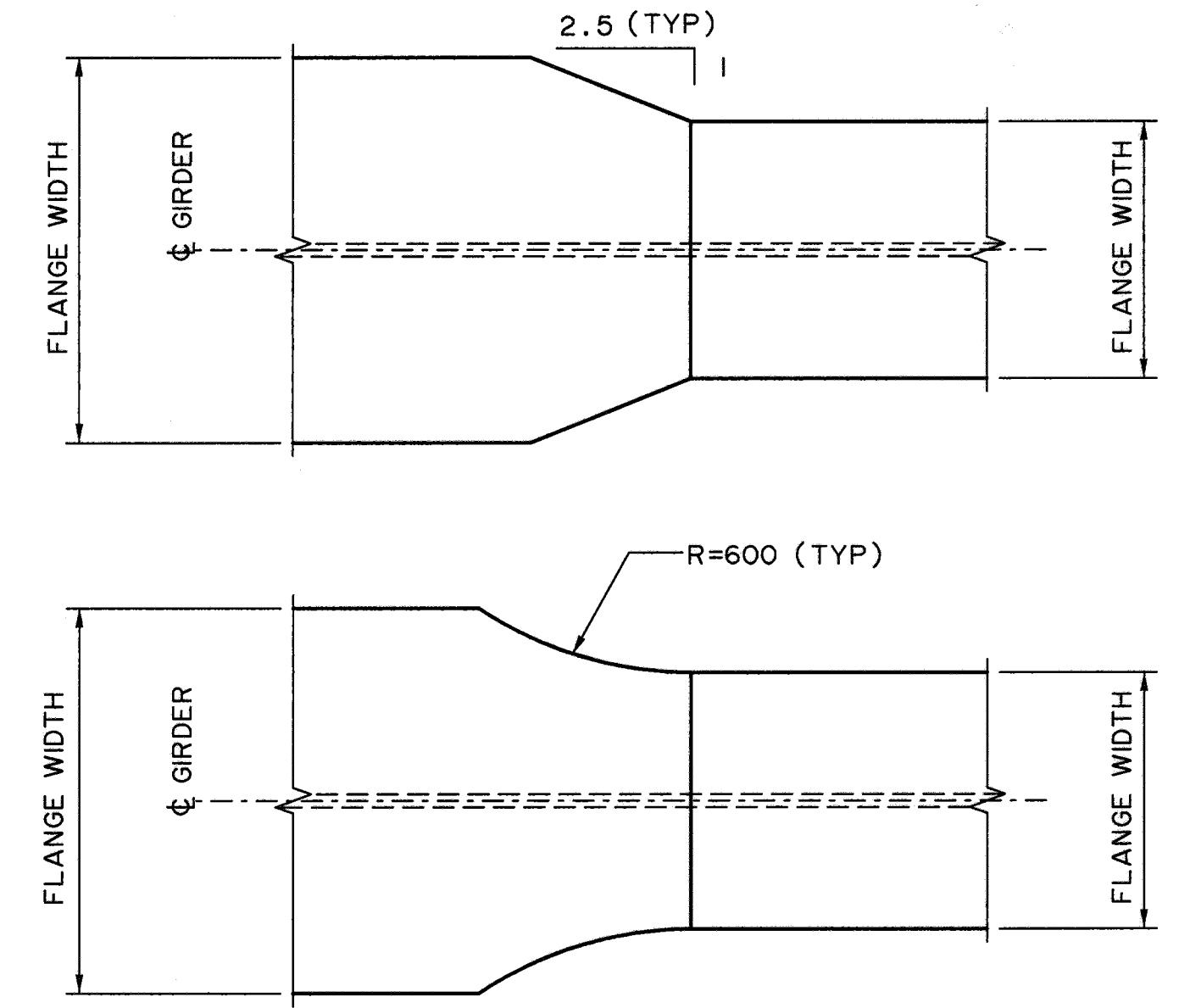
INTERMEDIATE STIFFENERS

1:25



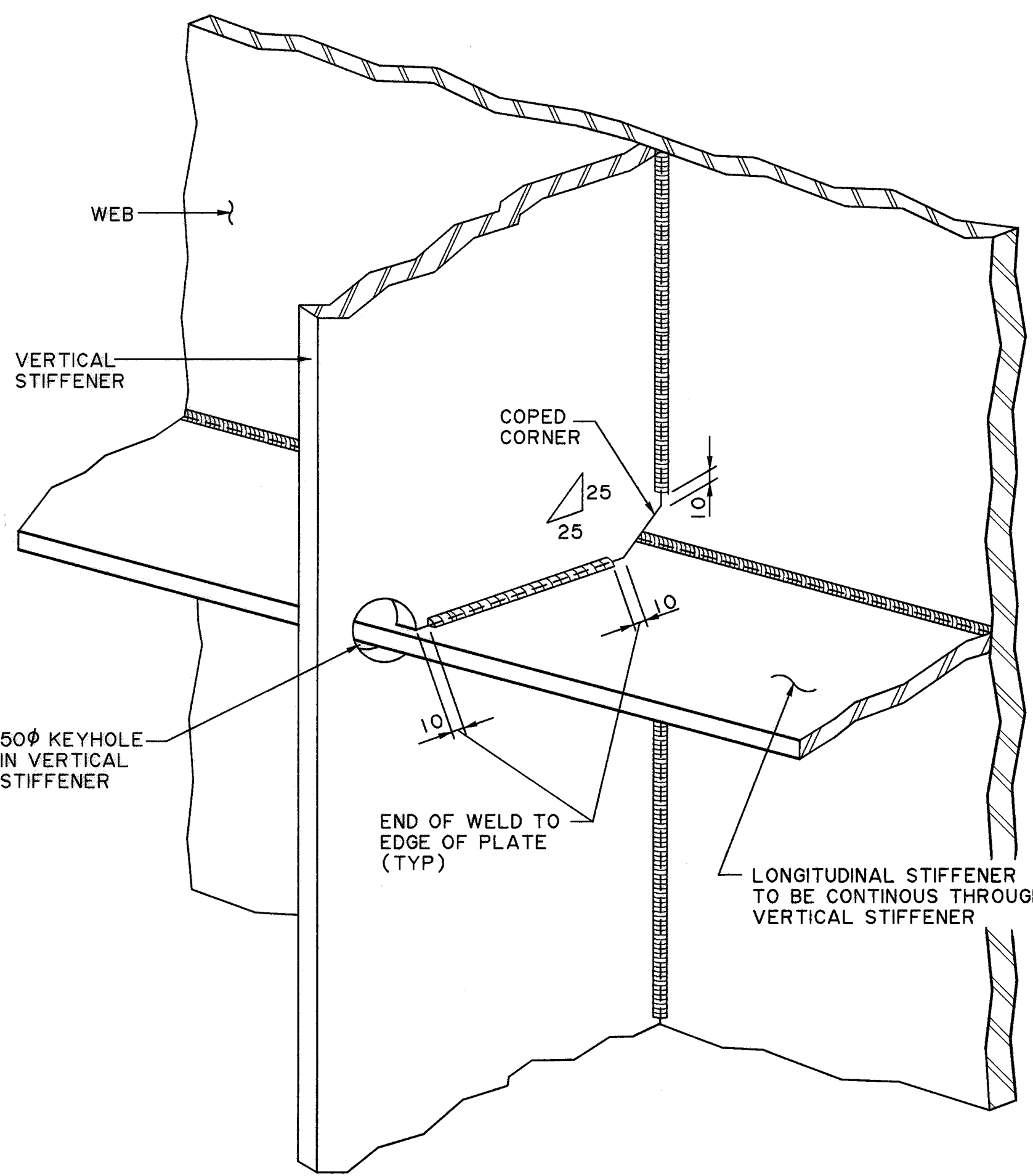
LONGITUDINAL STIFFENER AT DIAPHRAGM STIFFENER

1:25



TYPICAL FLANGE WIDTH TRANSITION DETAILS

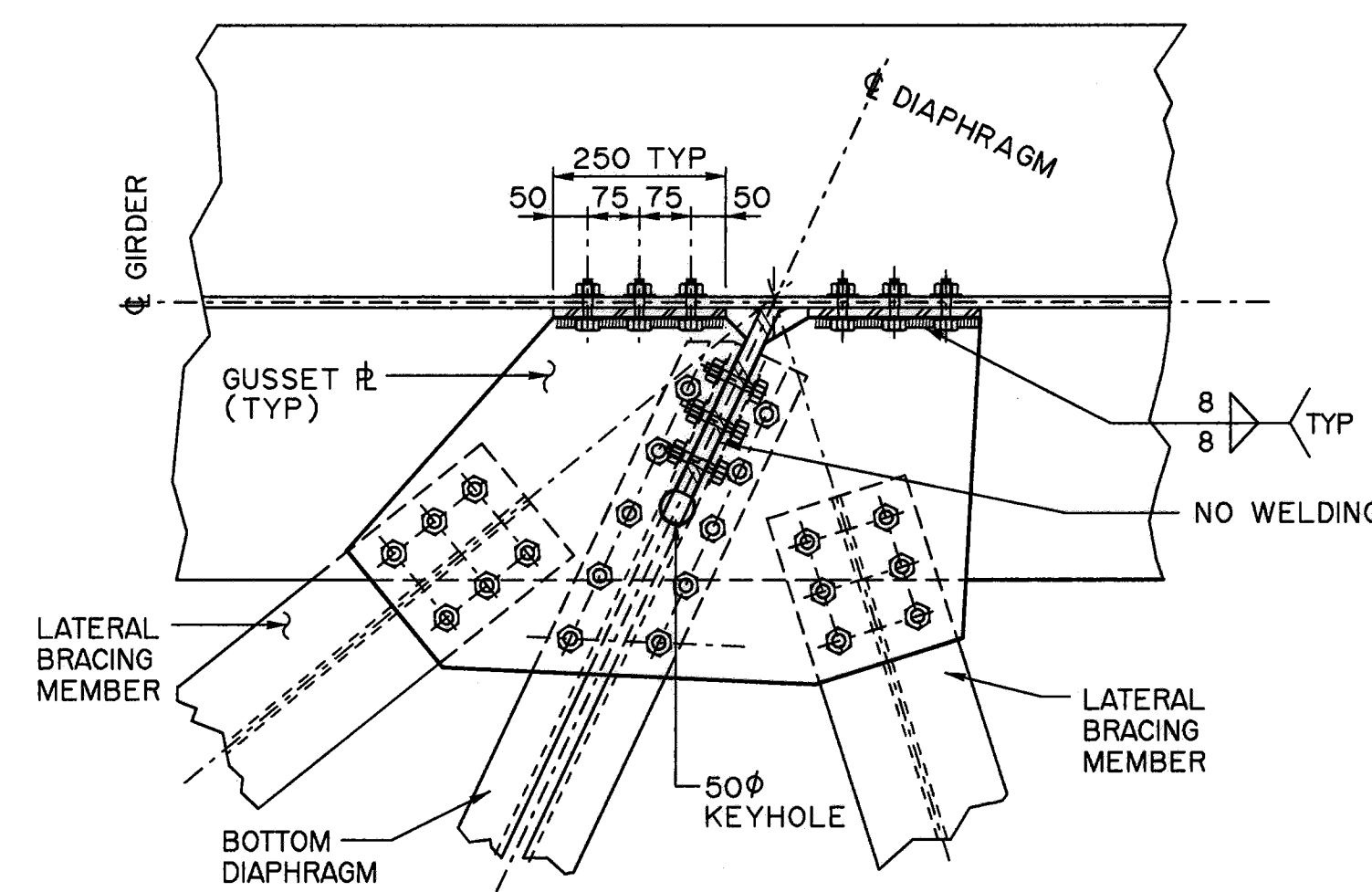
1:10



WELDED VERTICAL STIFFENER AT LONGITUDINAL STIFFENER

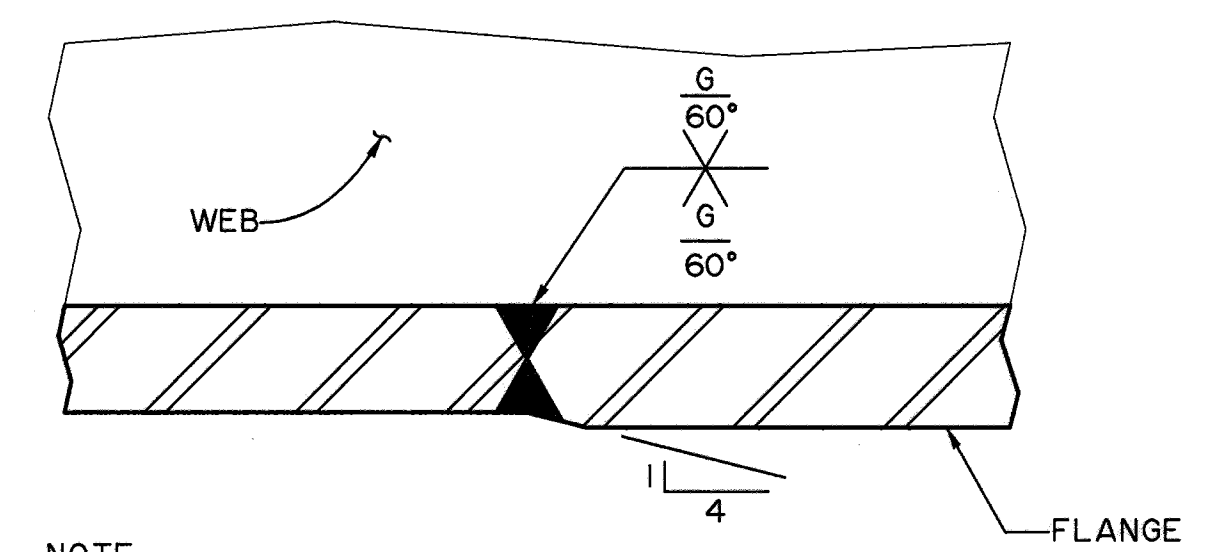
1:15

NOTE:
* 80 DIMENSION APPLICABLE FOR WEB THICKNESS $14 < t \leq 20$ mm



TYPICAL BOLTED GUSSET FOR LATERAL BRACING DETAIL

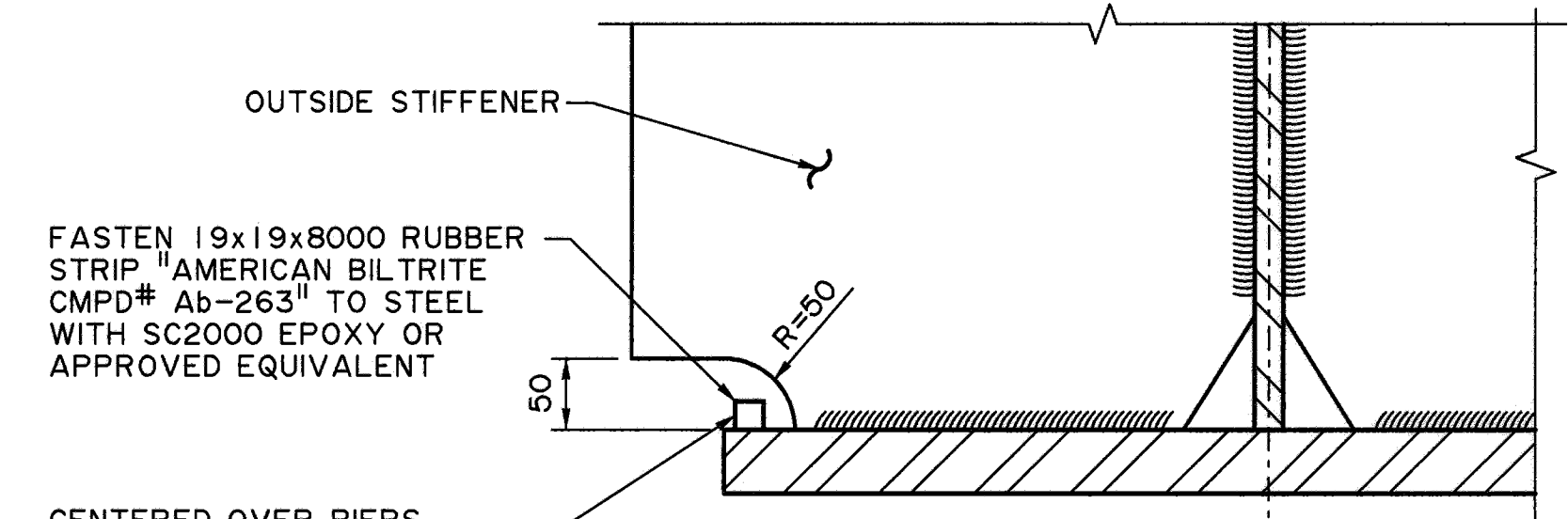
1:10



NOTE:
ALL FLANGE WELDS ARE TO BE FULL STRENGTH WELDS

TYPICAL FLANGE WELD

NTS

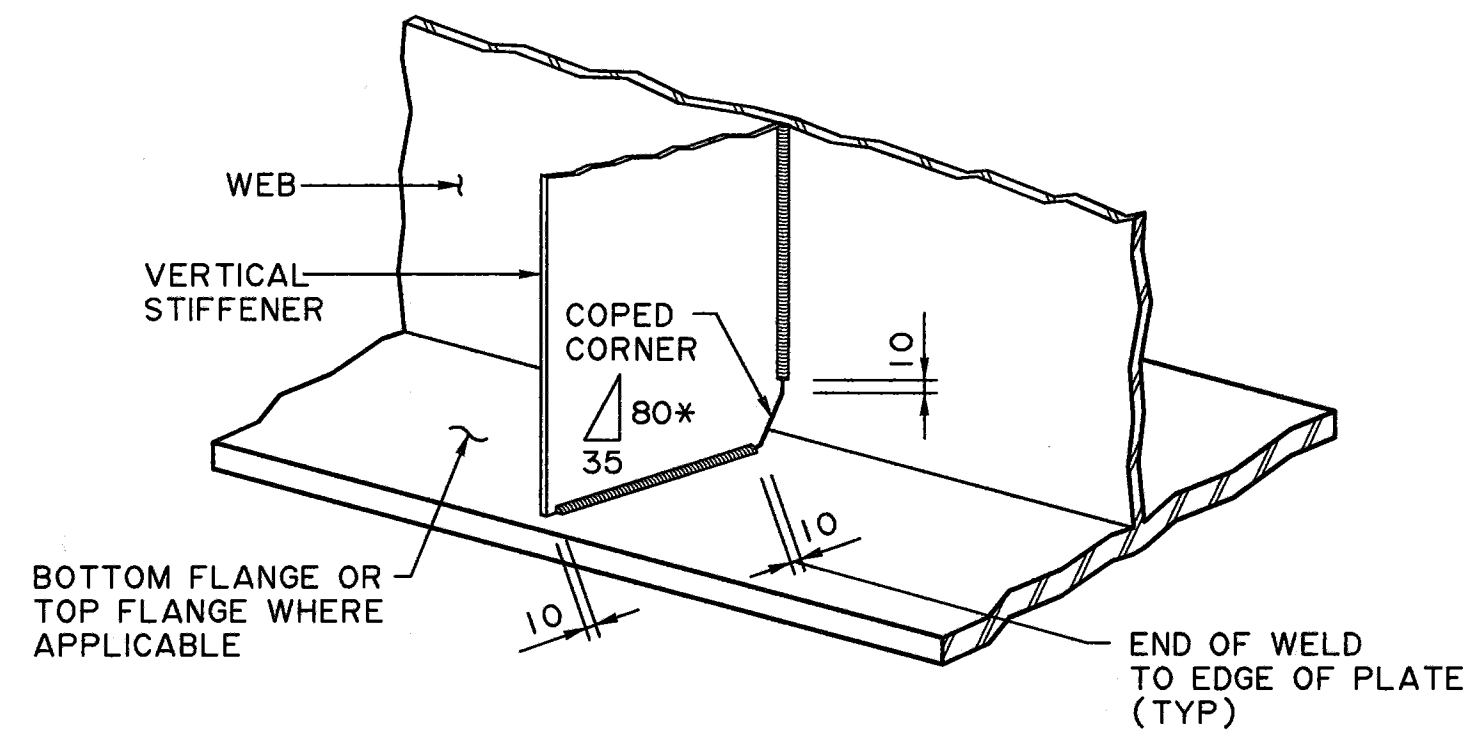


FASTEN 19x19x8000 RUBBER STRIP "AMERICAN BILTRITE CMPD# Ab-263" TO STEEL WITH SC2000 EPOXY OR APPROVED EQUIVALENT

CENTERED OVER PIERS, (OUTSIDE FLANGE OF EXTERIOR GIRDER ONLY)

DRIP STRIP DETAIL

1:5



WELDED ENDS OF VERTICAL STIFFENERS

1:10

DETAILS SHOWN ARE CONCEPTUAL AND REPRESENT DEPARTMENT PRACTICES AS REFERENCED IN THE BRIDGE STRUCTURES DESIGN CRITERIA. FULL RESPONSIBILITY FOR DESIGN OF DETAILS REMAINS WITH THE CONSULTANT.

NOT FOR CONSTRUCTION

RECOMMENDED DIRECTOR BRIDGE ENGINEERING			
APPROVED EXECUTIVE DIRECTOR TECHNICAL STANDARDS BRANCH			
REV	DATE	REVISIONS	BY
2012-06-28		REVISE COPE @ VERTICAL AND LONGITUDINAL STIFFENER INTERSECTION	CM CM
2012-01-18		VERTICAL STIFFENER & LATERAL BRACING DETAILS	CM

Alberta Transportation

**STEEL PLATE GIRDER BRIDGE
TYPICAL DETAILS SHEET 2**

DATE: 2009-01-23 SHEET: 4 OF 5 DRAWING: S-1760-08

NH 2012-01-18 S-1760-08-RVLDGN