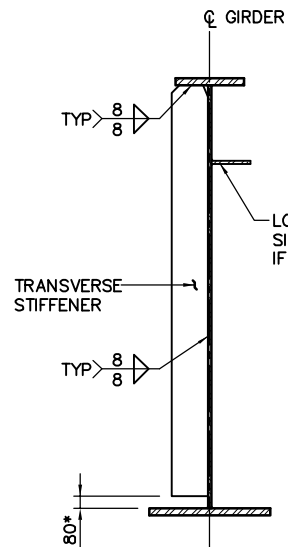
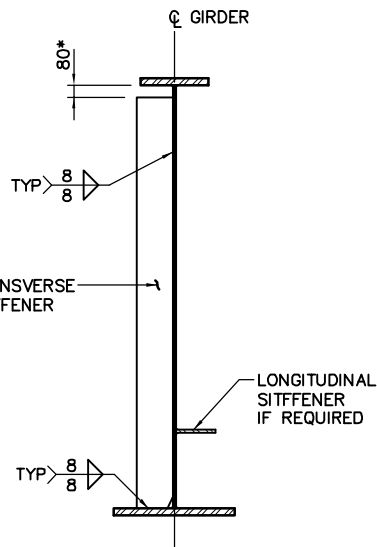


BEARING & JACKING STIFFENERS

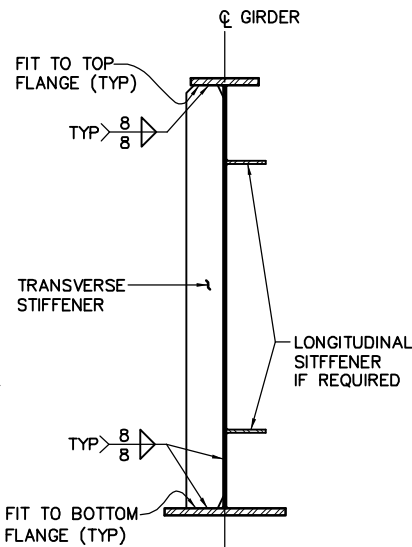
1:25



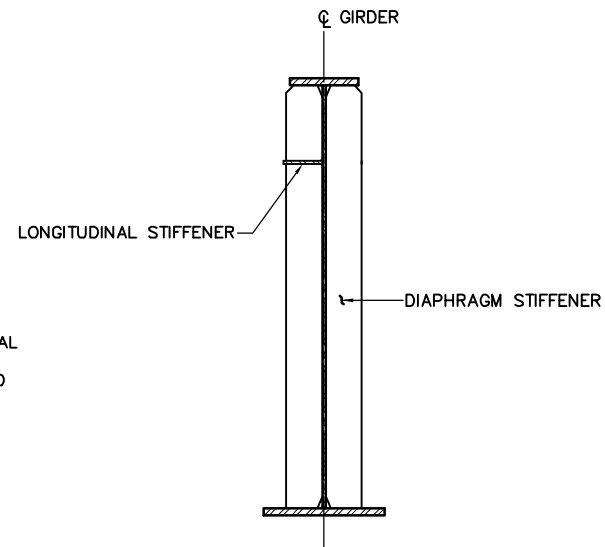
TOP FLANGE COMPRESSION REGION



BOTTOM FLANGE COMPRESSION REGION

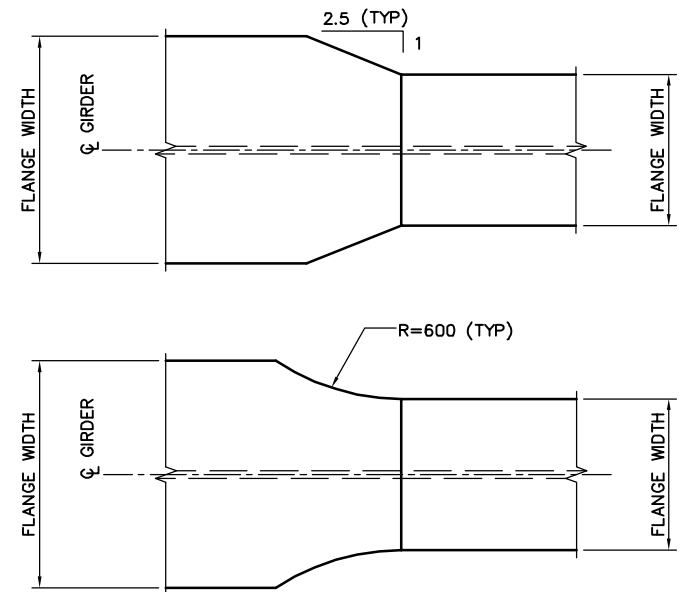


STRESS REVERSAL REGION



LONGITUDINAL STIFFENER AT DIAPHRAGM STIFFENER

1:25



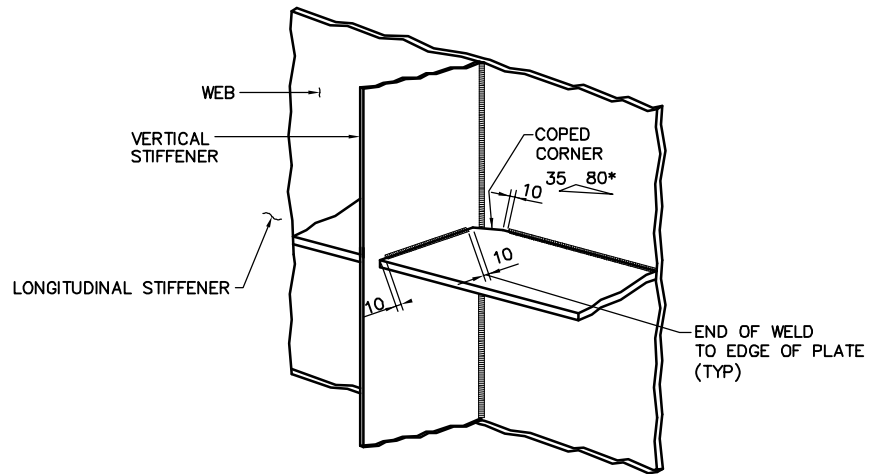
TYPICAL FLANGE WIDTH TRANSITION DETAILS

1:10

INTERMEDIATE STIFFENERS

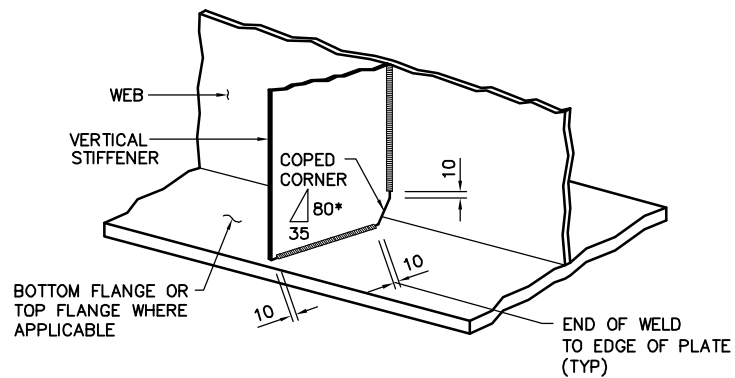
1:25

NOTE:
* 80 DIMENSION APPLICABLE FOR WEB THICKNESS $14 < t \leq 20$ mm



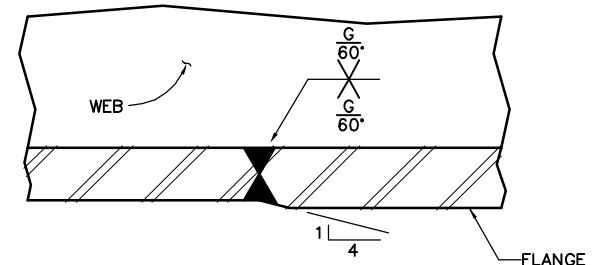
WELDED VERTICAL STIFFENER AT LONGITUDINAL STIFFENER

1:10



WELDED ENDS OF VERTICAL STIFFENERS

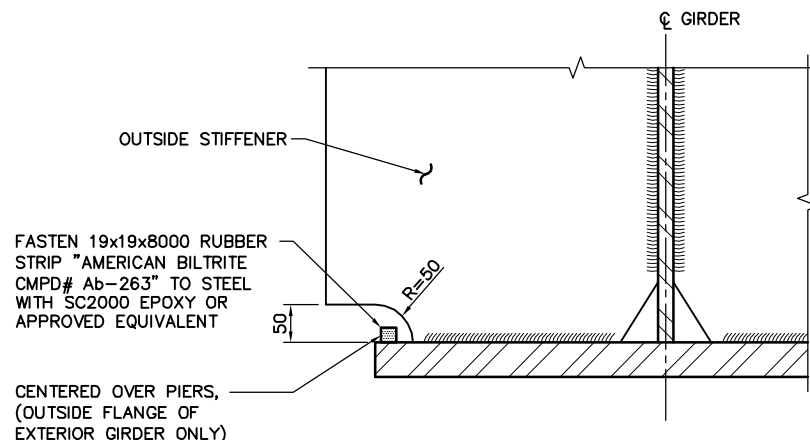
1:10



NOTE:
ALL FLANGE WELDS ARE TO BE FULL STRENGTH WELDS.

TYPICAL FLANGE WELD

N.T.S.



DRIP STRIP DETAIL

1:5

DETAILS SHOWN ARE CONCEPTUAL AND REPRESENT DEPARTMENT PRACTICES AS REFERENCED IN THE BRIDGE STRUCTURES DESIGN CRITERIA. FULL RESPONSIBILITY FOR DESIGN OF DETAILS REMAINS WITH THE CONSULTANT.

NOT FOR CONSTRUCTION

RECOMMENDED DIRECTOR BRIDGE ENGINEERING			
APPROVED EXECUTIVE DIRECTOR TECHNICAL STANDARDS BRANCH			
REV	DATE	REVISIONS	BY

Albarta Transportation

**STEEL PLATE GIRDER BRIDGE
TYPICAL DETAILS SHEET 2**

DATE: 2009.01.23
SHEET: 4 of 5
DRAWING: S-1760-08