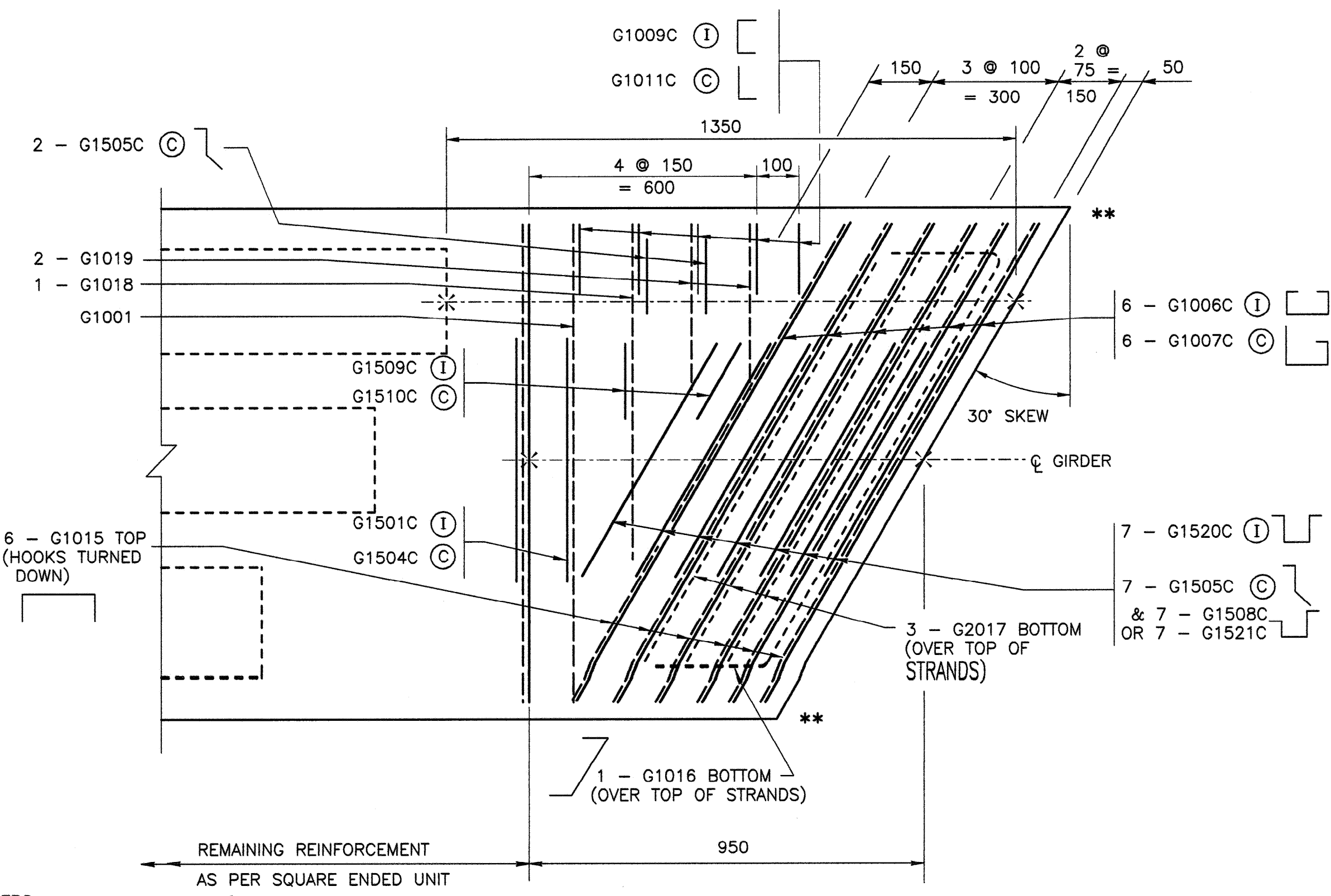


PLAN - 15° SKEW GIRDER END DETAIL
NTS



PLAN - 30° SKEW GIRDER END DETAIL
NTS

****NOTE**

- BARS G1516 AT ENDS OF GIRDERS NOT SHOWN IN THE INTERESTS OF CLARITY (TYP FOR ALL SKEWS)
- FOR INTERIOR GIRDERS SEE DWG S-1774
- FOR CURB GIRDERS SEE DWG S-1775

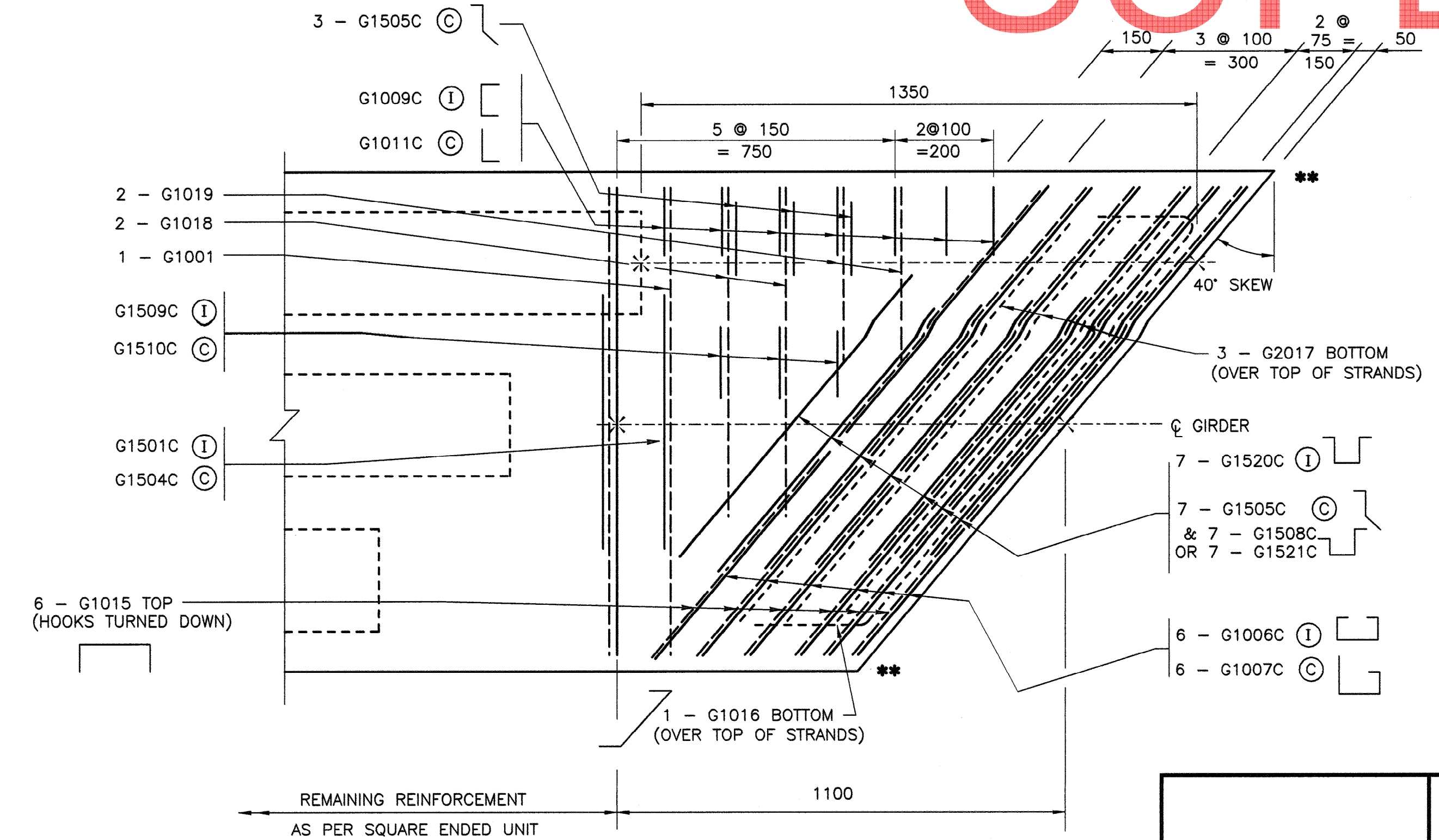
SUPERSEDED

GIRDER NOTES:

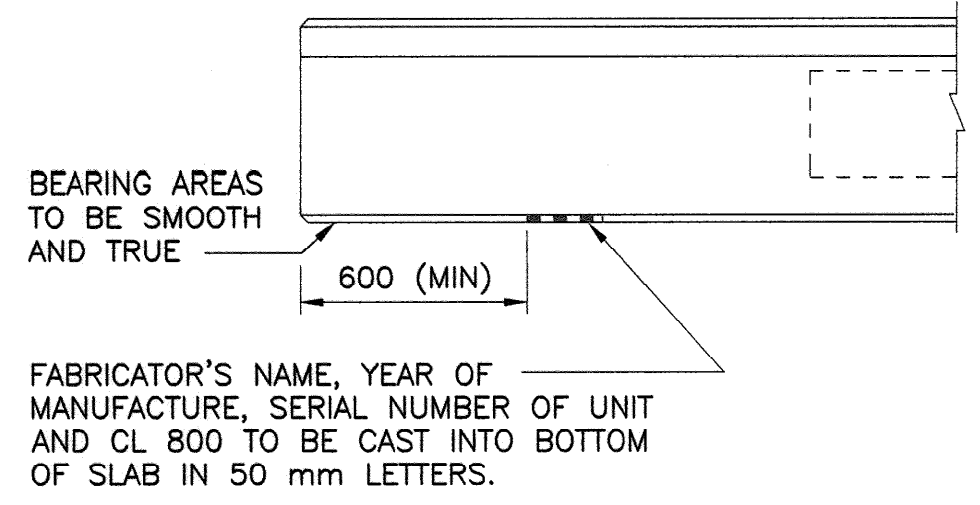
- (C) DENOTES CURB GIRDERS
- (I) DENOTES INTERIOR GIRDERS
- STIRRUPS ARE SHOWN AS SOLID LINES, OTHER BARS ARE SHOWN DASHED.

NOTE:

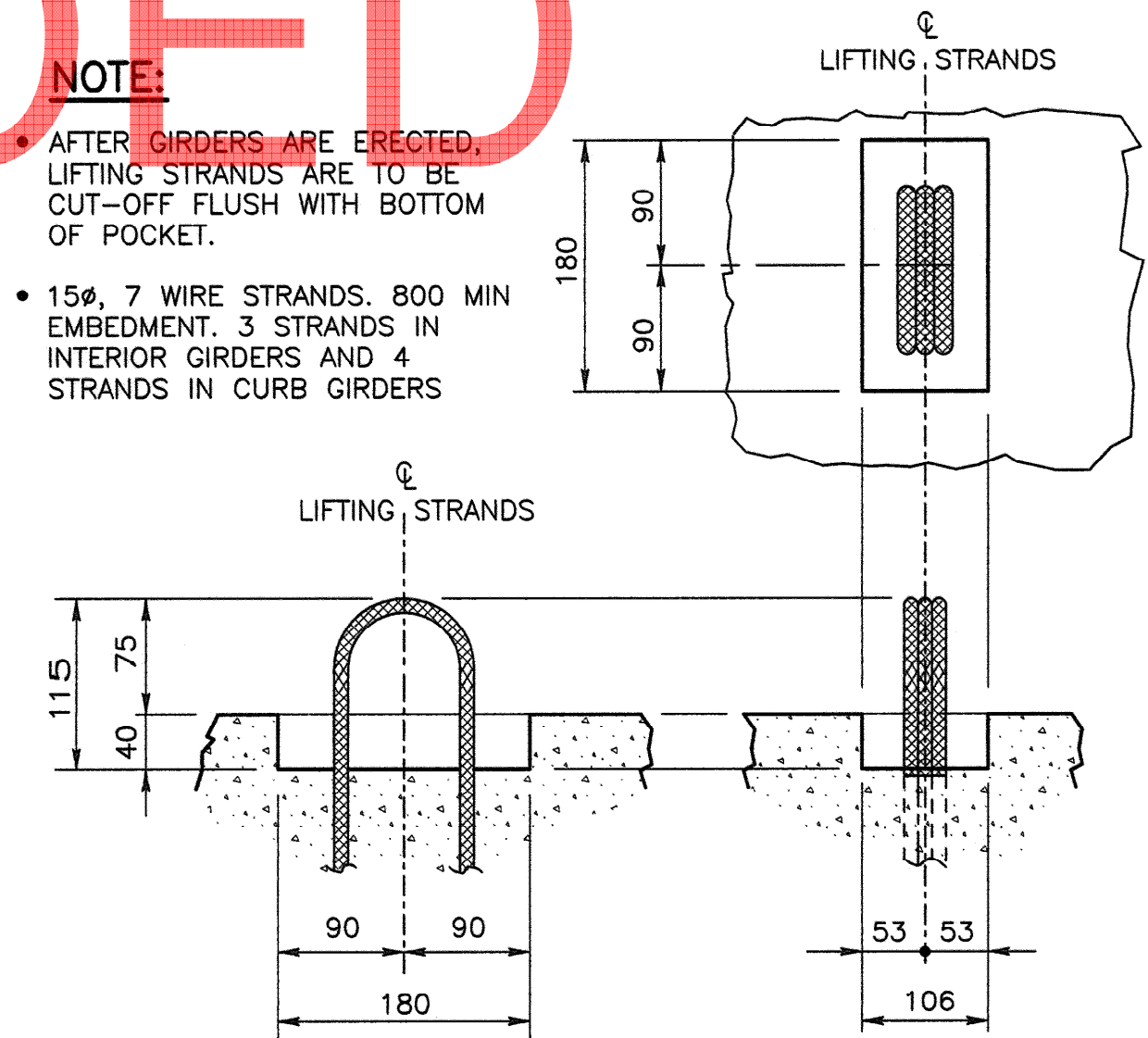
- AFTER GIRDERS ARE ERECTED, LIFTING STRANDS ARE TO BE CUT-OFF FLUSH WITH BOTTOM OF POCKET.
- 15# 7 WIRE STRANDS. 800 MIN EMBEDMENT. 3 STRANDS IN INTERIOR GIRDERS AND 4 STRANDS IN CURB GIRDERS



PLAN - 40° SKEW GIRDER END DETAIL
NTS



FABRICATOR'S NAME, YEAR OF MANUFACTURE, SERIAL NUMBER OF UNIT AND CL 800 TO BE CAST INTO BOTTOM OF SLAB IN 50 mm LETTERS.



LIFTING HOOK POCKET
1:5

BAR LIST: GIRDER END - 15° SKEW

MARK	SIZE	TYPE	X	Y	LENGTH
G1006C	10	B	1165		2575
G1007C	10	C	1165		2645 (2710)
G1009C	10	N	550	155	1005
G1011C	10	P	775 (840)		1075 (1140)
G1015	10	A	1165	390	1945
G1016	10	M	1000	270	1630
G1018	10	L	800	390	1190
G1019	10	L	400	390	790
G1505C	15	Q	VARIABLES	VARIABLES	VARIABLES
G1508C	15	W	420		1730
G1509C	15	N	550	170	1020
G1510C	15	N	420	170	890
G1520C	15	K	420		1860
G1521C	15	D	420		2262 (2327)
G2017	20	STR			980

BAR LIST: GIRDER END - 30° SKEW

MARK	SIZE	TYPE	X	Y	LENGTH
G1006C	10	B	1300		2710
G1007C	10	C	1300		2780 (2845)
G1009C	10	N	550	155	1005
G1011C	10	P	775 (840)		1075 (1140)
G1015	10	A	1300	390	2080
G1016	10	M	1000	577	1755
G1018	10	L	800	390	1190
G1019	10	L	400	390	790
G1505C	15	Q	VARIABLES	VARIABLES	VARIABLES
G1508C	15	W	468		1778
G1509C	15	N	550	170	1020
G1510C	15	N	420	170	890
G1520C	15	K	468		1908
G1521C	15	D	468		2310 (2375)
G2017	20	STR			1095

BAR LIST: GIRDER END - 40° SKEW

MARK	SIZE	TYPE	X	Y	LENGTH
G1006C	10	B	1470		2880
G1007C	10	C	1470		2950 (3015)
G1009C	10	N	550	155	1005
G1011C	10	P	775 (840)		1075 (1140)
G1015	10	A	1470	390	2250
G1016	10	M	1000	840	1905
G1018	10	L	800	390	1190
G1019	10	L	400	390	790
G1505C	15	Q	VARIABLES	VARIABLES	VARIABLES
G1508C	15	W	529		1839
G1509C	15	N	550	170	1020
G1510C	15	N	420	170	890
G1520C	15	K	529		1969
G1521C	15	D	529		2371 (2436)
G2017	20	STR			1240

-SUFFIX LETTER "C" ON BAR MARK DENOTES EPOXY COATED BARS.
 -MIN EPOXY COATED BEND: 10M = 80# , 15M = 120#
 -FOR BAR TYPES SEE DRAWING S-1774
 -FOR DIMENSIONS THAT VARY WITH CURB HEIGHT, DIMENSIONS ARE GIVEN AS:
 XXX FOR 350 CURB
 (XXX) FOR 415 CURB

• FOR GENERAL NOTES SEE DWG S-1771 AND S-1775

NH AUG 18, 2008 S-1776-08.DWG -DRAWN-BY-RWK-

	<p>PERMIT TO PRACTICE ISL Engineering and Land Services Ltd. Signature: [Signature] Date: Aug 15, 2008 PERMIT NUMBER: P 4741 The Association of Professional Engineers, Geologists and Geophysicists of Alberta</p>	<p>DESIGNER [Signature] DATE: Aug 15 108</p>	<p>CHECKER [Signature] DATE: AUG 15, 2008</p>	<p>RECOMMENDED DIRECTOR BRIDGE ENGINEERING [Signature] APPROVED EXECUTIVE DIRECTOR TECHNICAL STANDARDS BRANCH [Signature] DATE: August 22, 2008</p>	<p>Alberta Transportation</p> <p>STANDARD SLC COMPOSITE BRIDGES SLC510 PRESTRESSED CONCRETE GIRDERS GIRDER END DETAILS</p>
		<p>DATE: Aug 15 108</p>	<p>DATE: AUG 15, 2008</p>	<p>DATE: August 22, 2008</p>	<p>DEPARTMENT BAR CODE: -</p> <p>DATE: 2008-06-30</p> <p>SHEET: 6 OF 7</p> <p>DRAWING: S-1776-08</p>