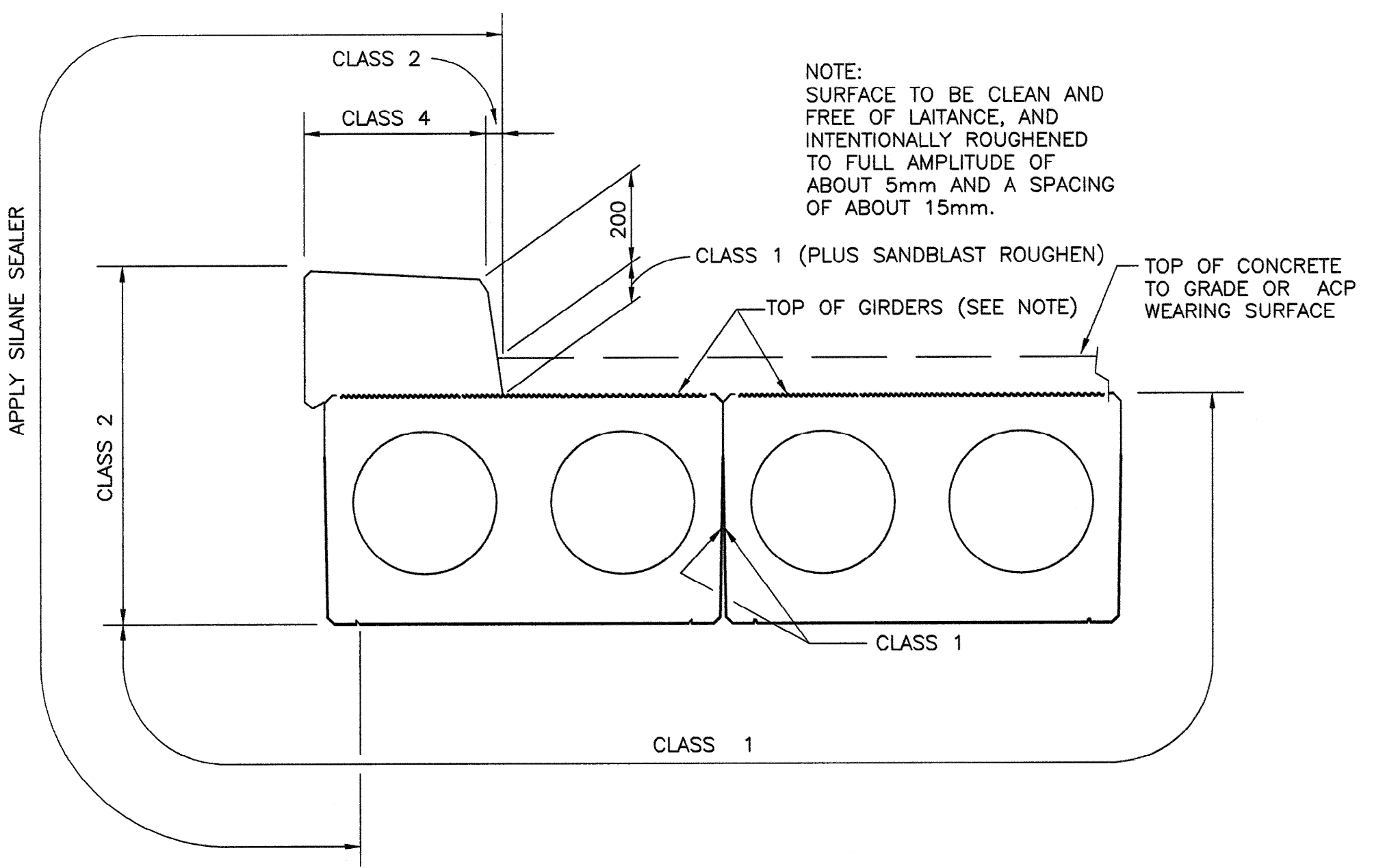
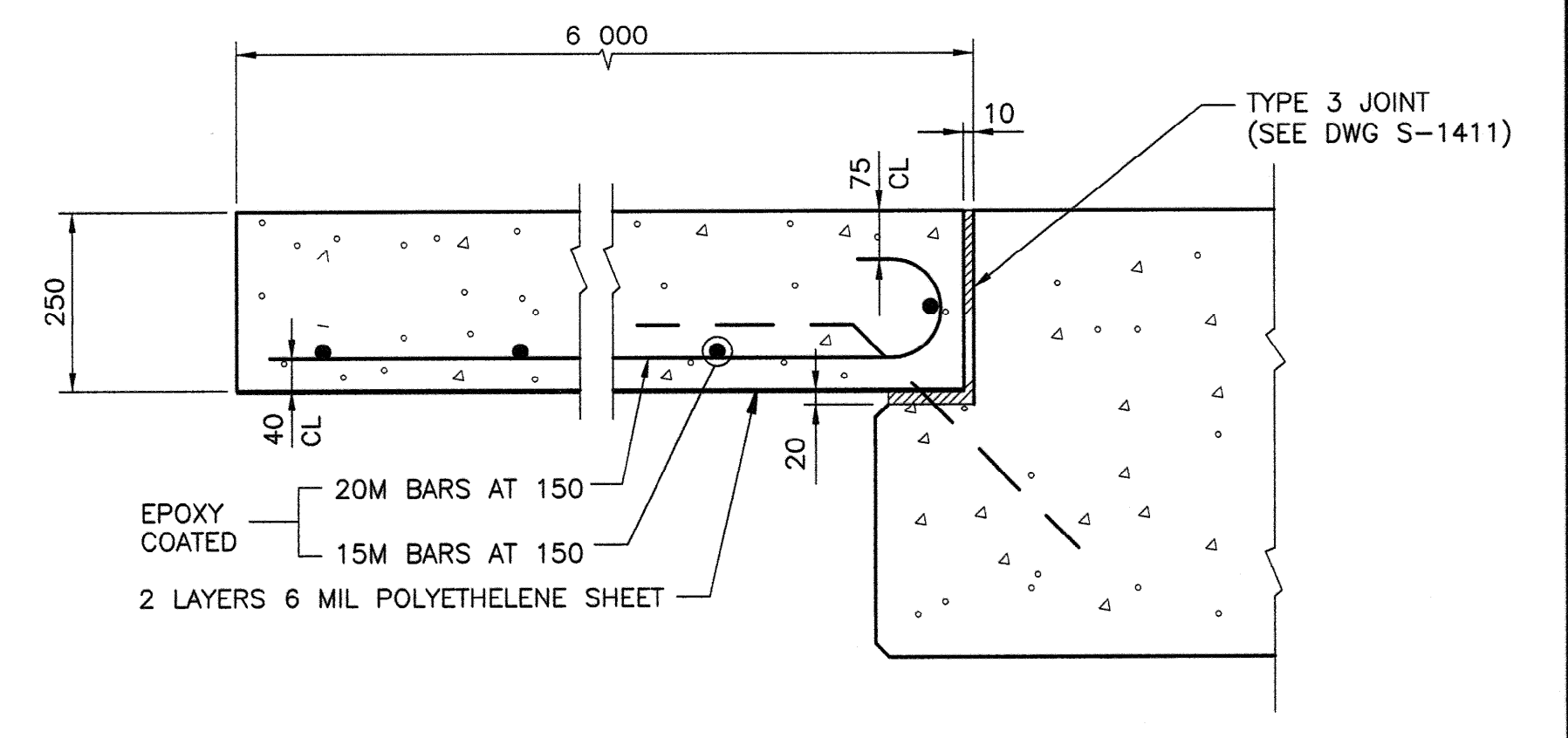


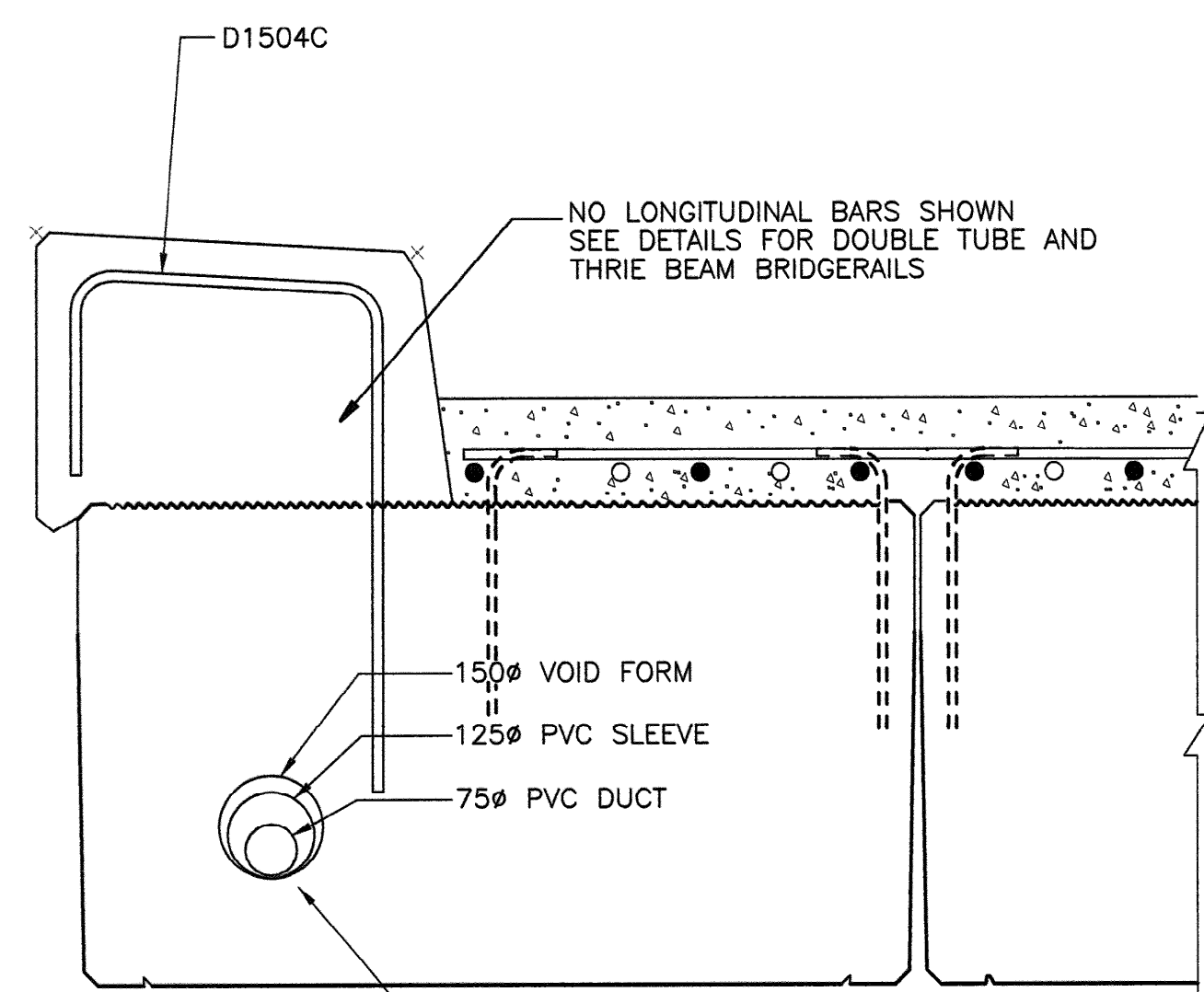
CURB BLOCKOUT AT PIERS
NTS



PRECAST GIRDER FINISHES
NTS

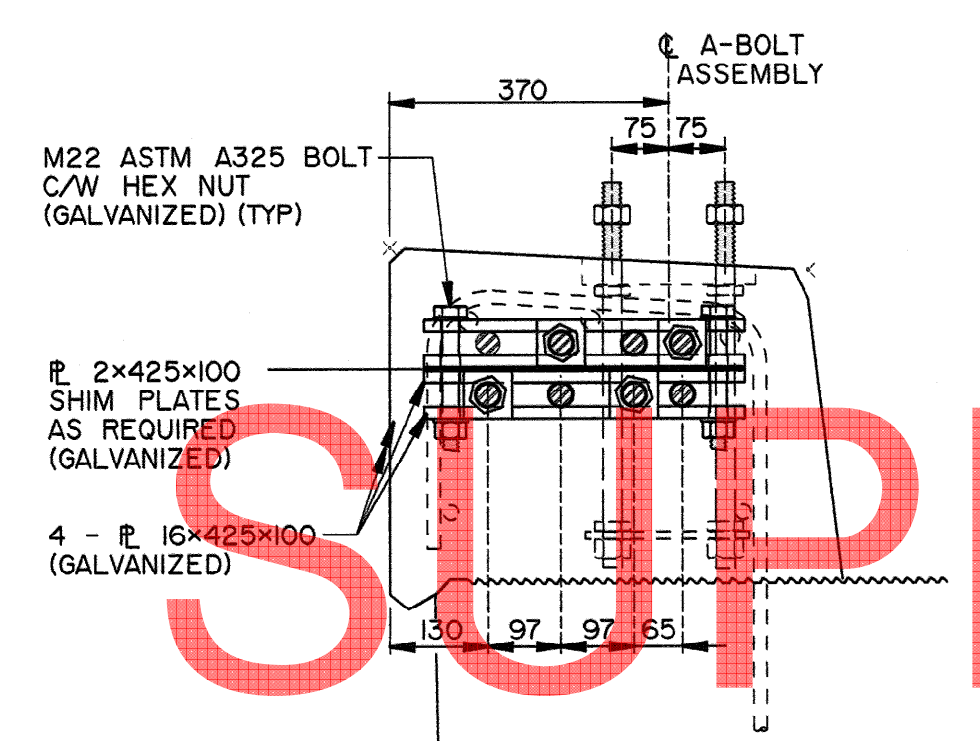


BRIDGE END DETAIL - CONCRETE TO GRADE
1:10

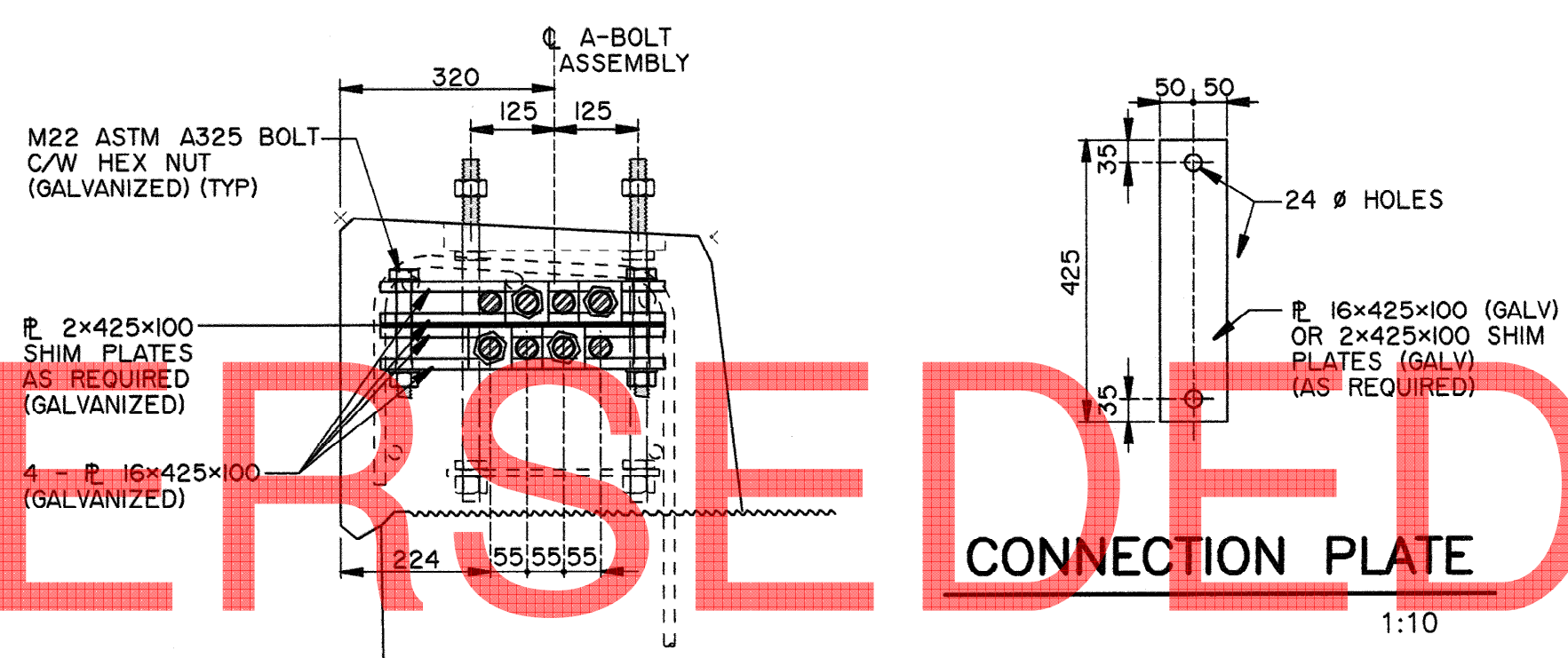


FOR CURB GIRDERS ONLY
150Ø CONTINUOUS VOID FORM FULL LENGTH OF GIRDER
125Ø x 600 LG RIGID PVC SLEEVE THROUGH PIER DIAPHRAGMS
75Ø CONTINUOUS RIGID PVC DUCT C/W PULL WIRE AND ONE EXPANSION SLEEVE PER GIRDER

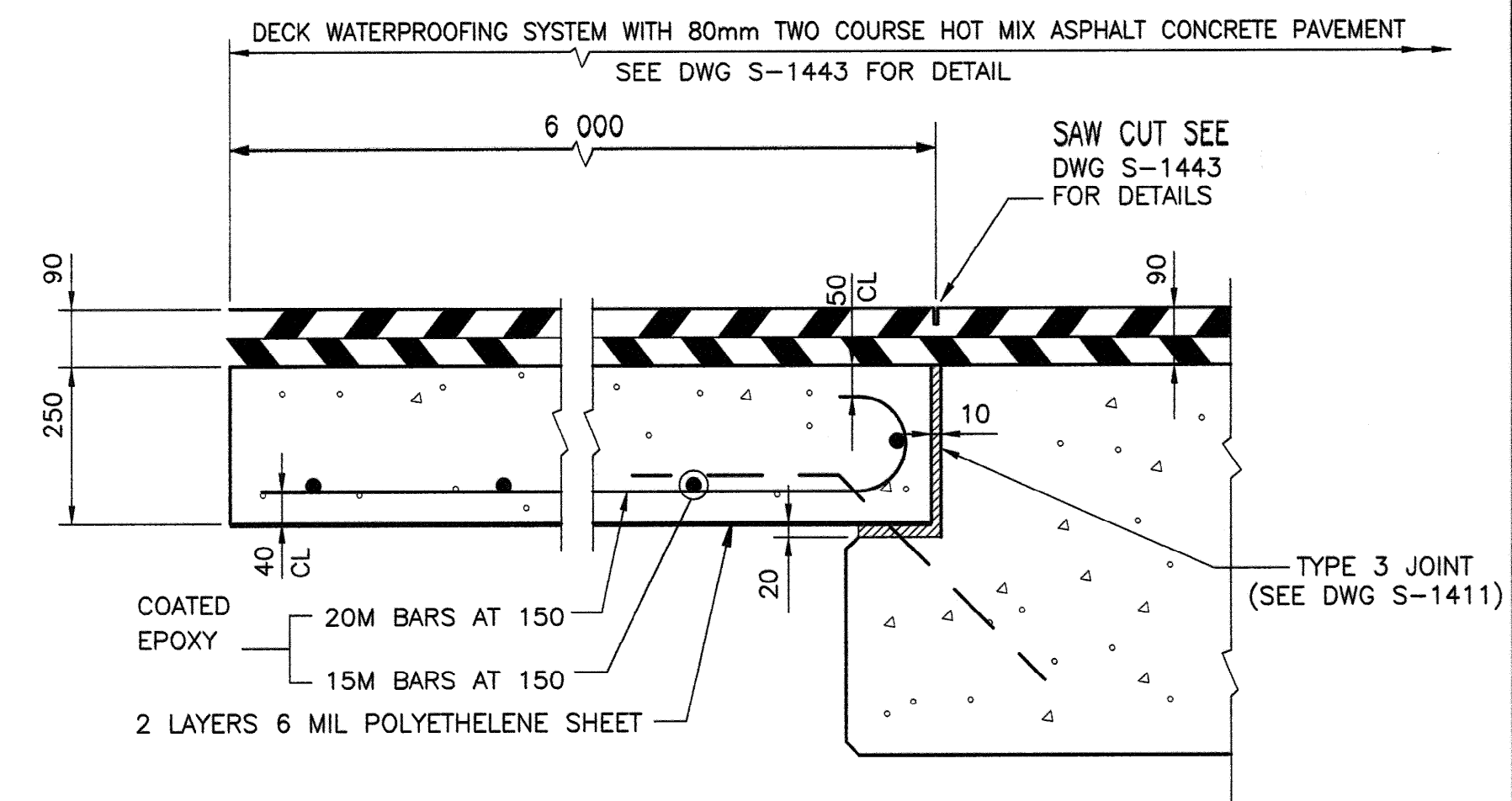
C SECTION
S-1782, S-1784 1:10



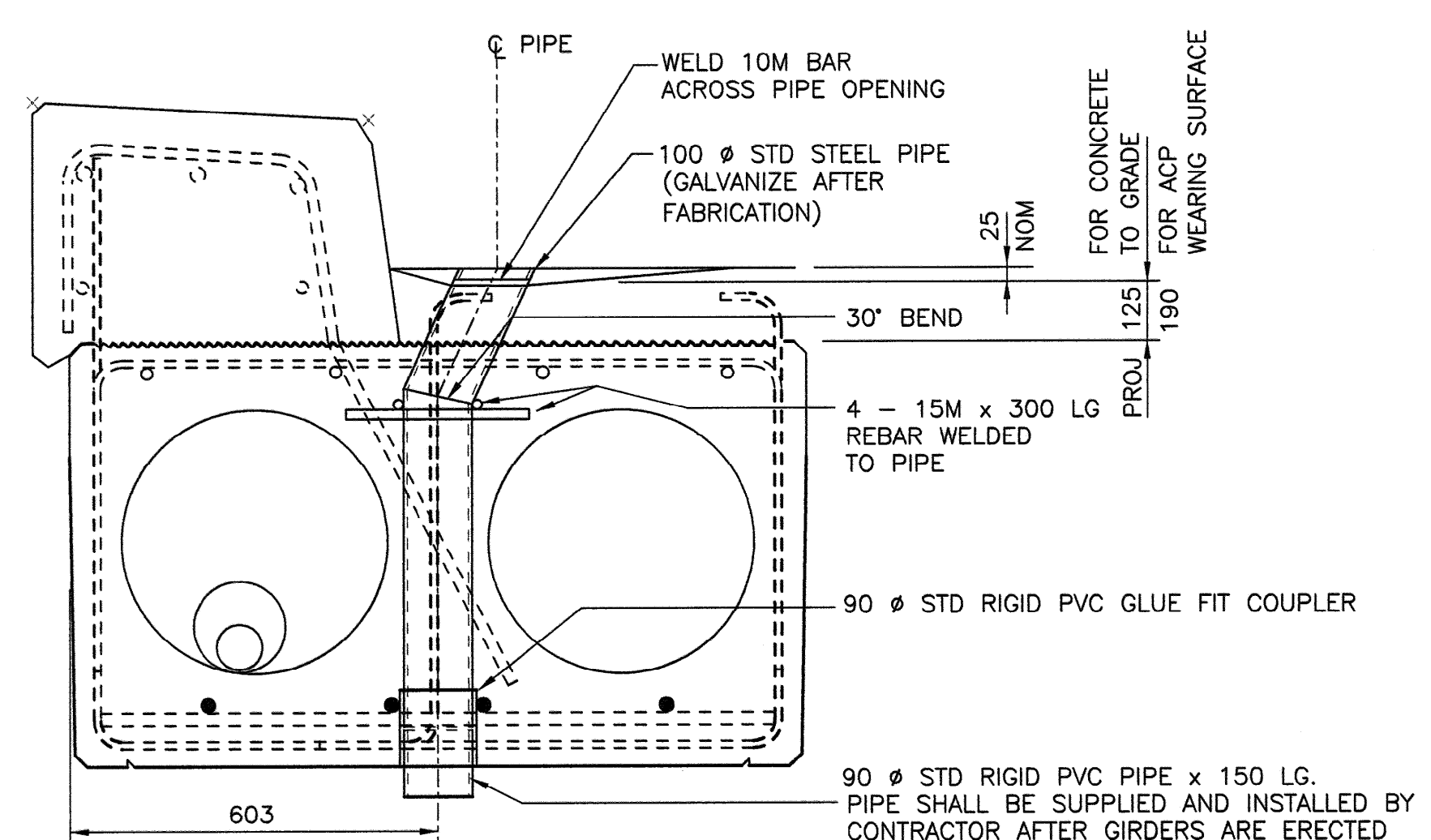
THRIE BEAM BRIDGERAIL
1:10



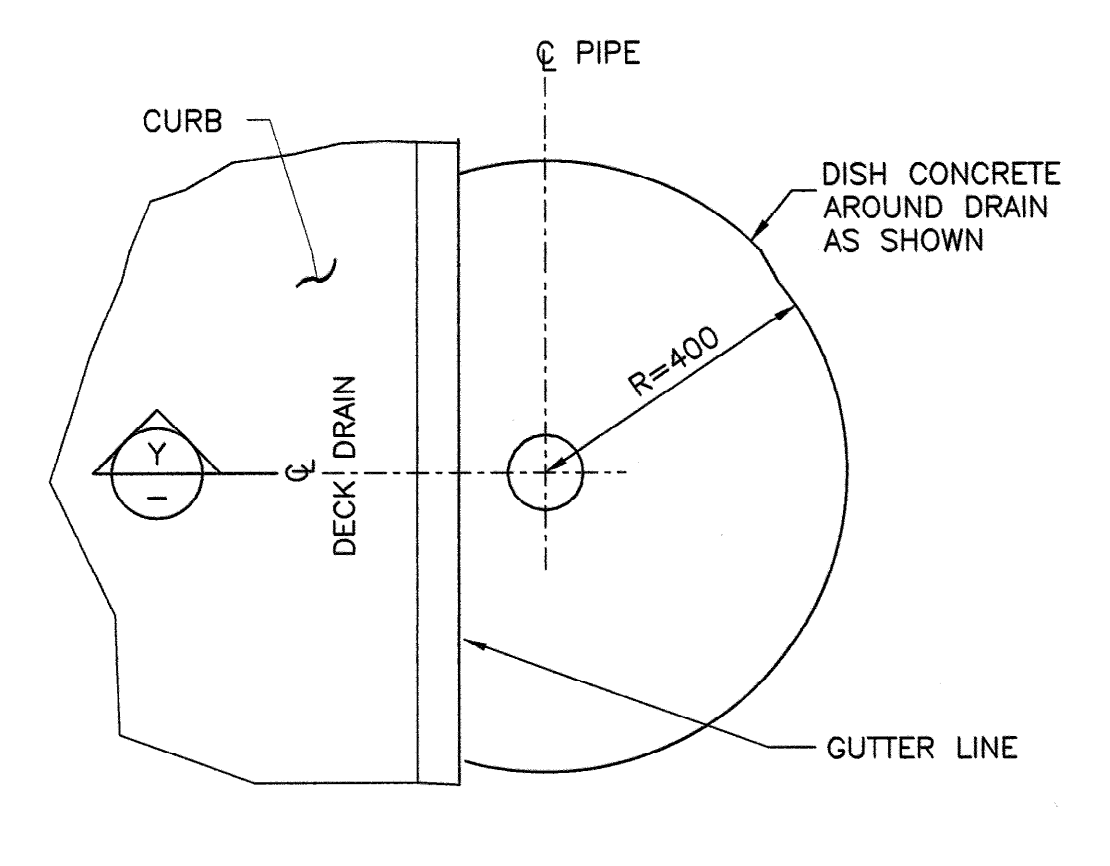
DOUBLE TUBE BRIDGERAIL
1:10



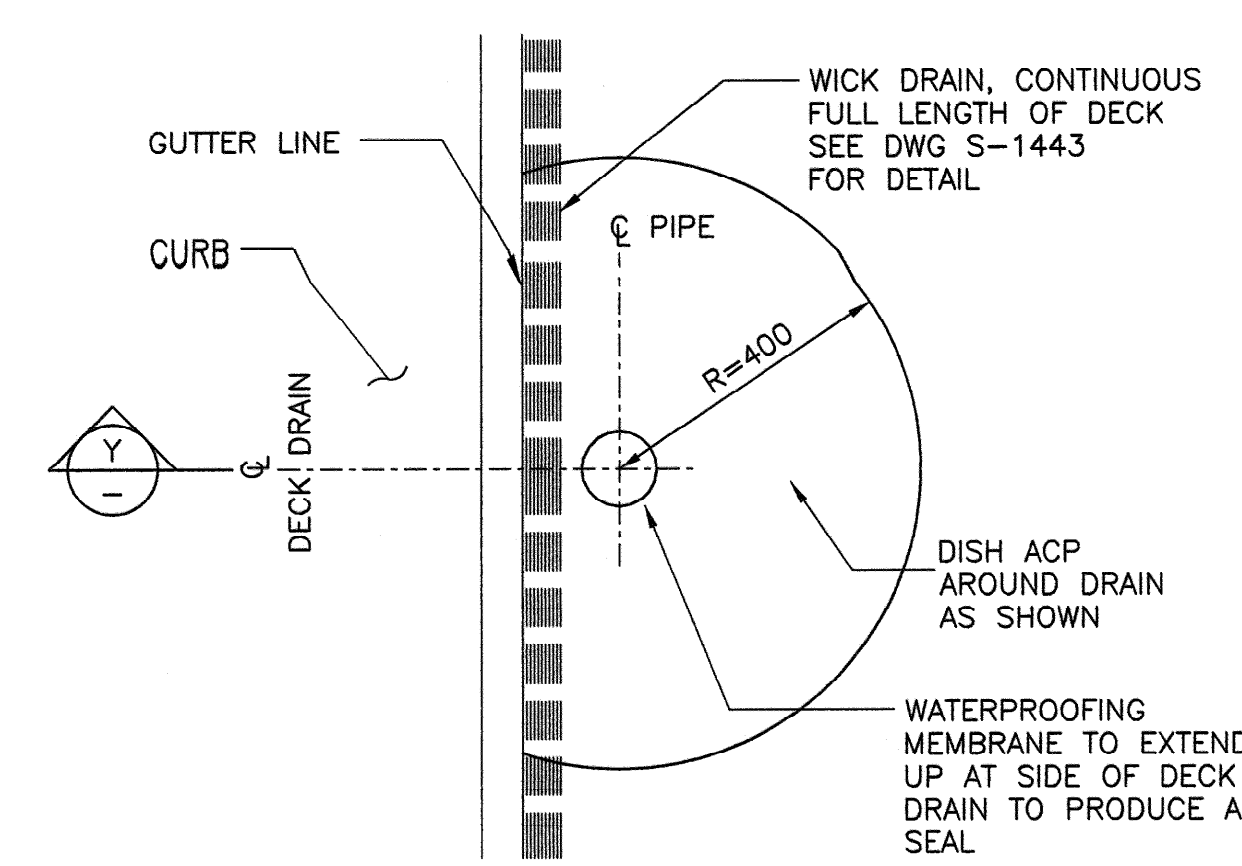
BRIDGE END DETAIL - ACP WEARING SURFACE
1:10



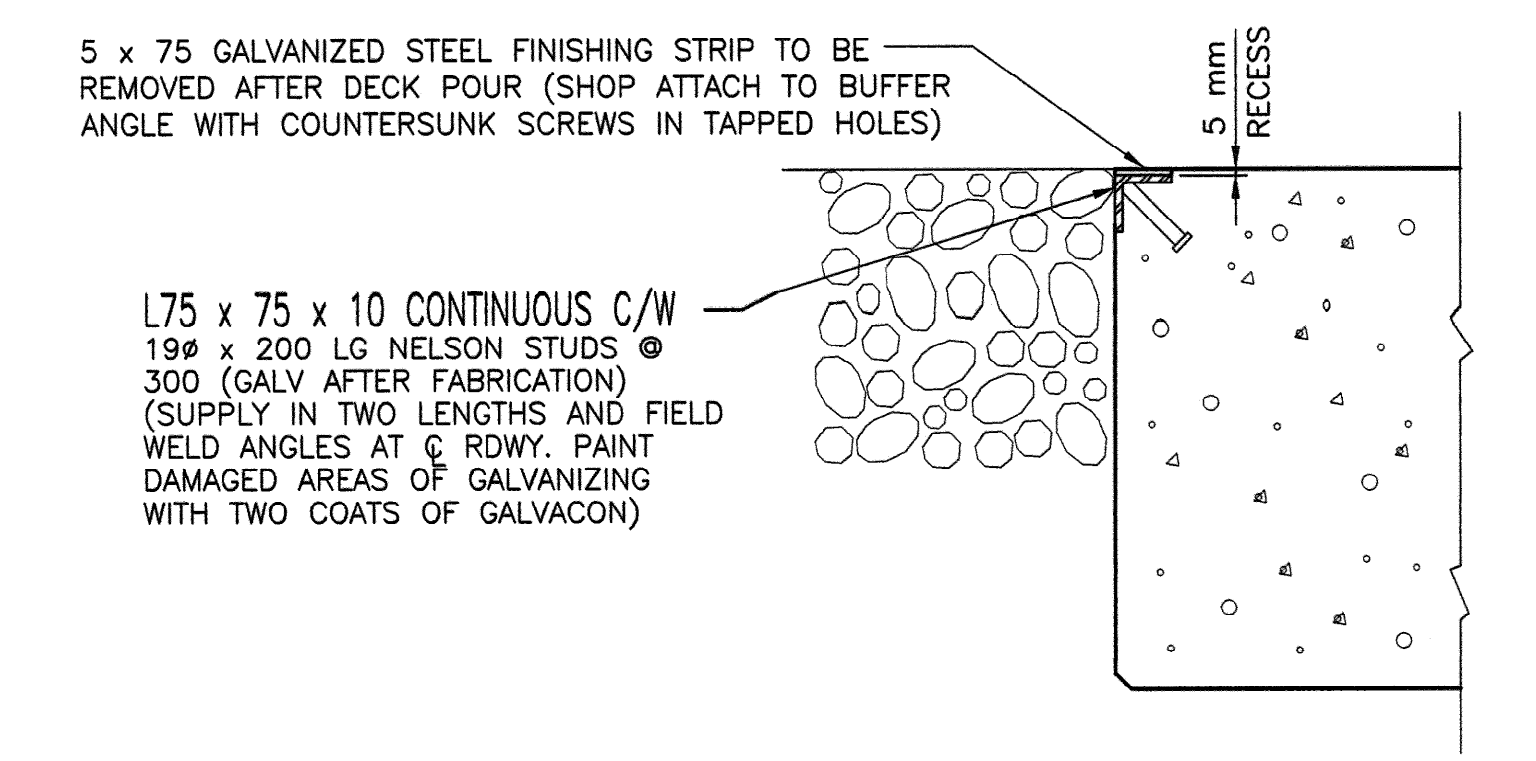
DECK DRAIN - SECTION
1:10



R DECK DRAIN - PLAN
S-1783 (FOR CONCRETE TO GRADE) 1:10



S DECK DRAIN - PLAN
S-1783 (FOR ACP WEARING SURFACE) 1:10



BRIDGE END DETAIL - NO APPROACH SLAB
1:10

• FOR GENERAL NOTES SEE DWG. S-1782

NH AUG 15, 2008 S-1784-08.DWG -DRAWN-BY-RWK-

	PERMIT TO PRACTICE ISL Engineering and Land Services Ltd. Signature: [Signature] Date: AUG 15, 2008 PERMIT NUMBER: P 4741 The Association of Professional Engineers, Geologists and Geophysicists of Alberta	DESIGNER 	CHECKER 	RECOMMENDED DIRECTOR BRIDGE ENGINEERING 	Alberta Transportation STANDARD SLC COMPOSITE BRIDGES SLC700 PRESTRESSED CONCRETE GIRDERS DECK DETAILS - SHEET 2
		APPROVED EXECUTIVE DIRECTOR TECHNICAL STANDARDS BRANCH 	DEPARTMENT BAR CODE: - DATE: 2008-06-30 SHEET: 3 OF 7 DRAWING: S-1784-08		