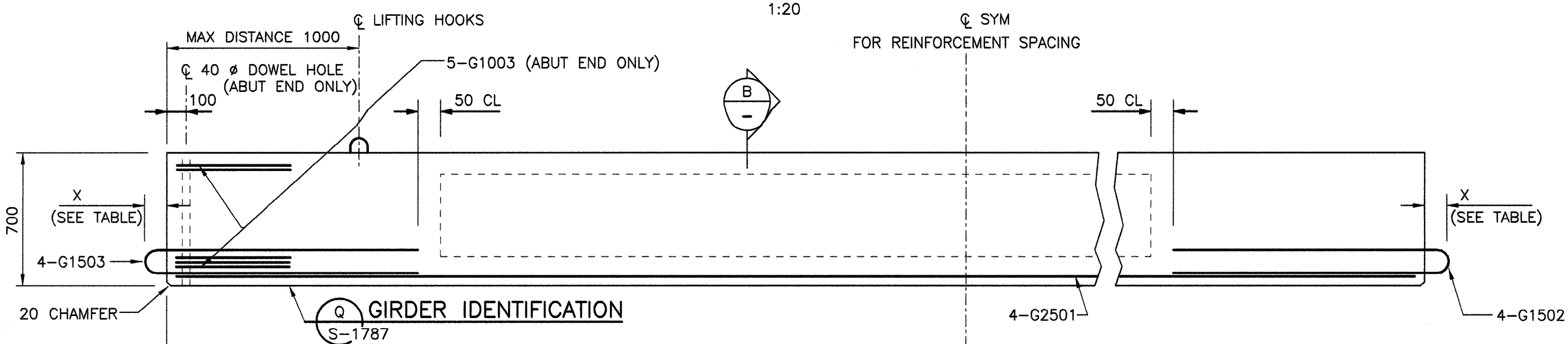
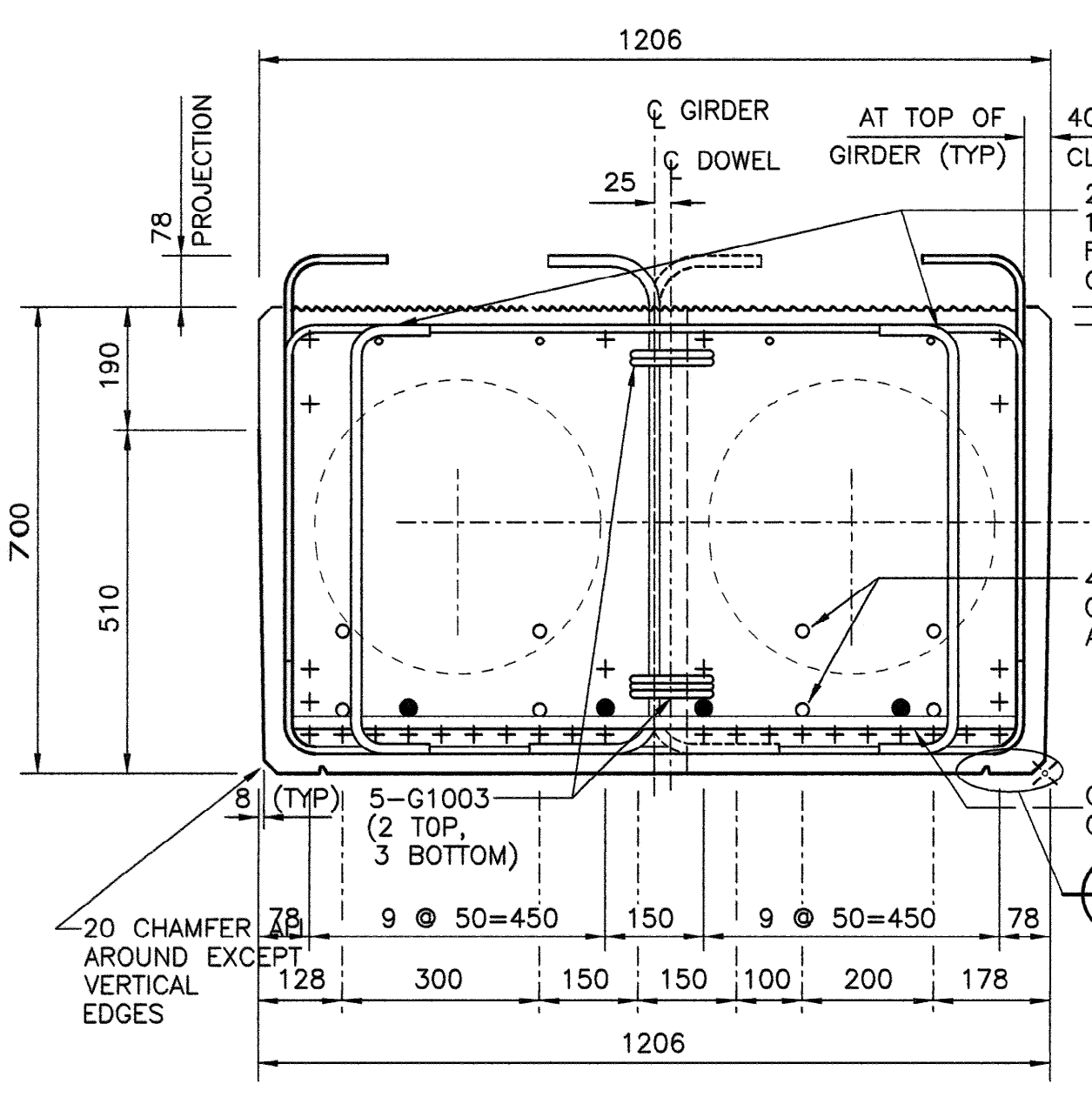


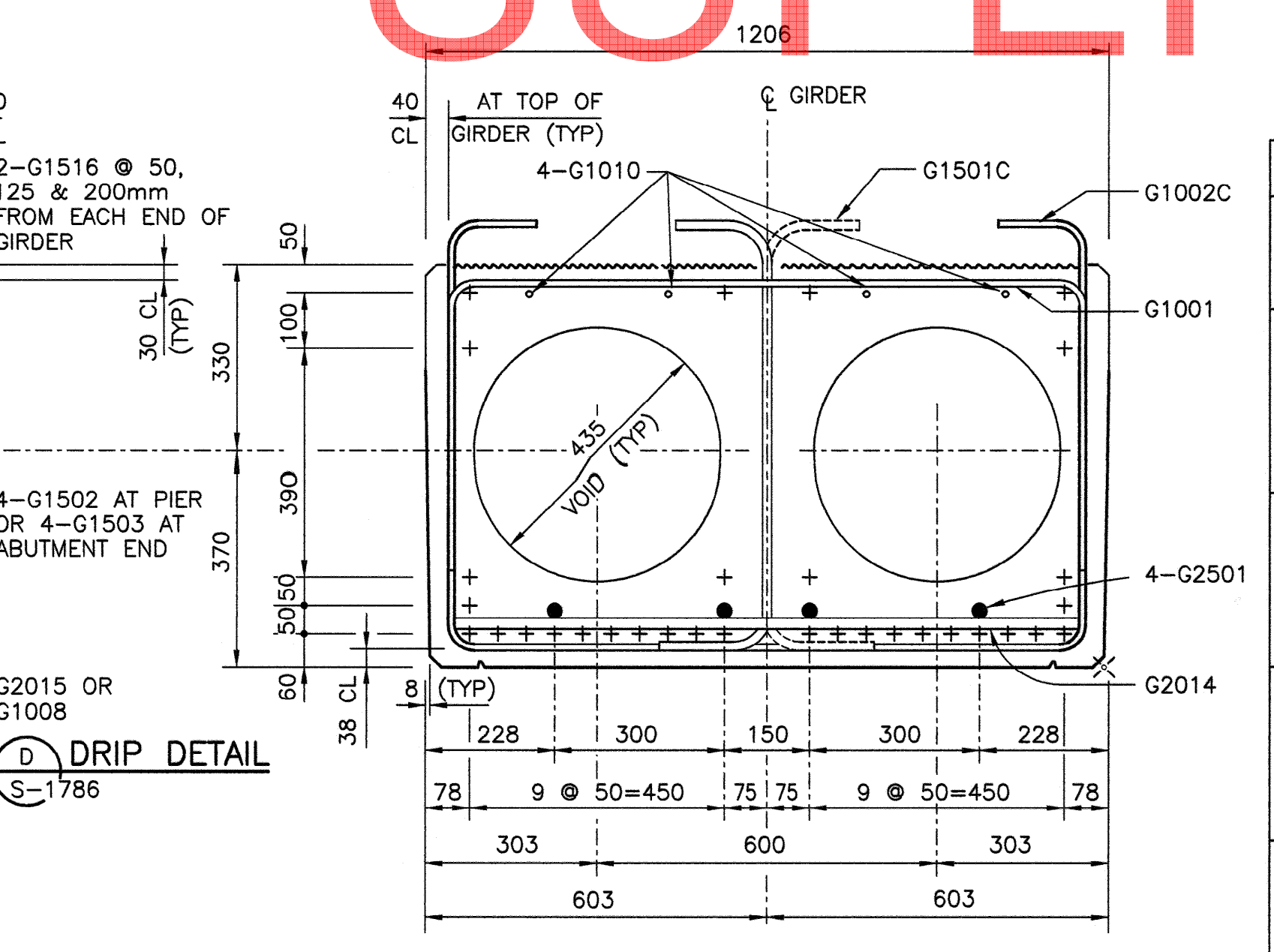
PLAN  
1:20



ELEVATION  
1:20



SECTION A  
1:10

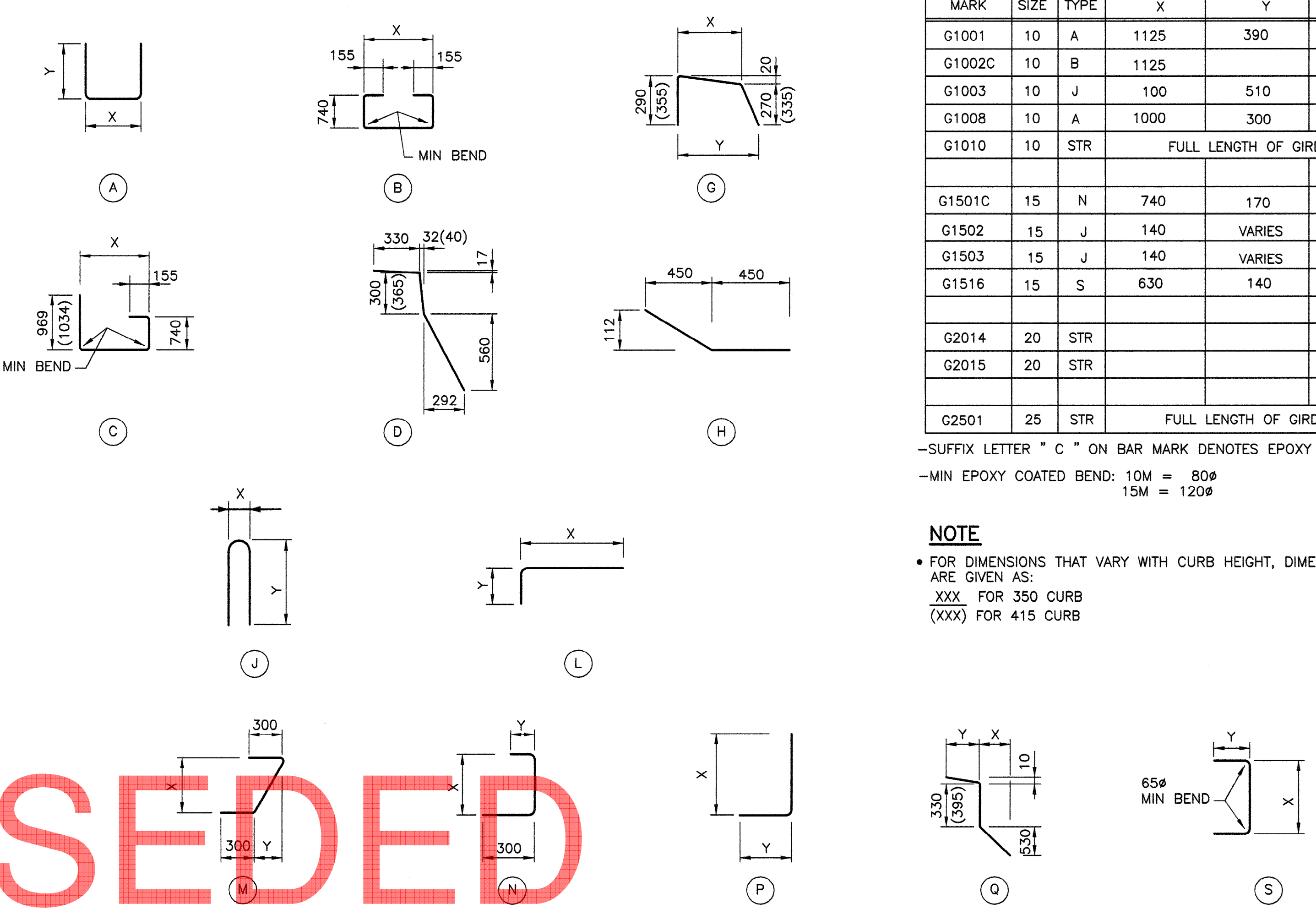


SECTION B  
1:10

SKEW	HOOK PROJECTION			
	0°	15°	30°	40°
X	200	210	230	260

NOTE: STAGGER HOOKS ON OPPOSING GIRDERS

BAR TYPES  
(ALL BAR DIMENSIONS ARE OUT TO OUT)



BAR LIST: INTERIOR GIRDER					
MARK	SIZE	TYPE	X	Y	LENGTH
G1001	10	A	1125	390	1905
G1002C	10	B	1125		2915
G1003	10	J	100	510	1080
G1008	10	A	1000	300	1600
G1010	10	STR	FULL LENGTH OF GIRDER		
G1501C	15	N	740	170	1210
G1502	15	J	140	VARIABLE	VARIABLE
G1503	15	J	140	VARIABLE	VARIABLE
G1516	15	S	630	140	910
G2014	20	STR			1100
G2015	20	STR			950
G2501	25	STR	FULL LENGTH OF GIRDER		

-SUFFIX LETTER "C" ON BAR MARK DENOTES EPOXY COATED BARS.  
-MIN EPOXY COATED BEND: 10M = 80°  
15M = 120°

NOTE  
• FOR DIMENSIONS THAT VARY WITH CURB HEIGHT, DIMENSIONS ARE GIVEN AS:  
XXX FOR 350 CURB  
XXX FOR 415 CURB

**SUPERSEDED**

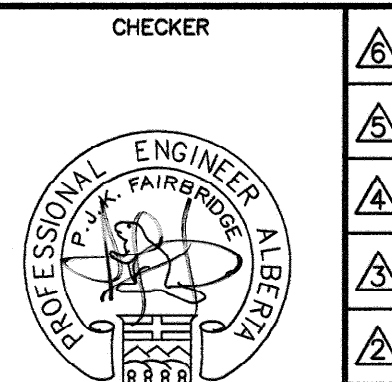
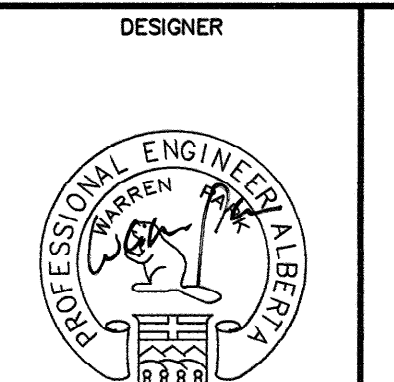
GIRDER LENGTH L	THEORETICAL GIRDER WEIGHT (tonnes) INTERIOR/415CURB/350CURB	FORCE PER STRAND (kN) INITIAL/FINAL	STRAND PATTERN (N = TOTAL NO. OF STRANDS)				STIRRUP SPACING S (mm)	G2014 SPACING Q (mm)
			INTERIOR GIRDER		CURB GIRDER			
			INTERIOR GIRDER	CURB GIRDER	INTERIOR GIRDER	CURB GIRDER		
14m	21.0/29.6/28.3	182/162	N=18	N=16	ND=2 D=1400	ND=2 D=1400	50, 2@75, 3@100, 11@150, 6@200, 3@250, 5@300, 4@350	500 2@2200 2100
16m	23.7/33.6/32.1	182/158	N=24	N=22	ND=2 D=1600	ND=2 D=1600	50, 2@75, 3@100, 10@150, 10@200, 3@250, 5@300, 5@350	500 3@2200 900
18m	26.4/37.6/35.8	182/155	N=28	N=26	ND=4 D=1800	ND=4 D=1800	50, 2@75, 3@100, 11@150, 4@200, 5@250, 9@300, 6@350	500 3@2200 1900
20m	29.1/41.5/39.6	182/153	N=32	N=30	ND=6 D=2000	ND=6 D=2000	50, 2@75, 3@100, 11@150, 6@200, 3@250, 15@300, 4@350	500 4@2200 700

• FOR GENERAL NOTES, SEE DWG S-1782 AND S-1786

SPAN (m)	INTERIOR GIRDER (kN/m)			CURB GIRDER (415mm) (kN/m)		CURB GIRDER (350mm) (kN/m)	
	GIRDER	125mm DECK	90mm ACP	GIRDER	125mm DECK	90mm ACP	GIRDER 150mm DECK
14	14.71			20.79			19.84
16	14.50			20.61			19.66
18	14.39	4.40	2.60	20.47	2.46	1.46	19.52
20	14.30			20.37			19.41



PERMIT TO PRACTICE  
ISL Engineering and Land Services Ltd.  
Signature: [Signature]  
Date: Aug 15, 2008  
PERMIT NUMBER: P 4741  
The Association of Professional Engineers, Geologists and Geophysicists of Alberta



REV	DATE	REVISIONS	BY

RECOMMENDED DIRECTOR BRIDGE ENGINEERING  
[Signature]  
APPROVED EXECUTIVE DIRECTOR TECHNICAL STANDARDS BRANCH  
[Signature]

Alberta Transportation  
STANDARD SLC COMPOSITE BRIDGES  
SLC700 PRESTRESSED CONCRETE GIRDERS  
INTERIOR GIRDER

DEPARTMENT BAR CODE	DATE	SHEET	DRAWING
-	2008-06-30	4 OF 7	S-1785-08

NH AUG 12, 2008 S-1785-08.DWG -DRAWN-BY-RWK-