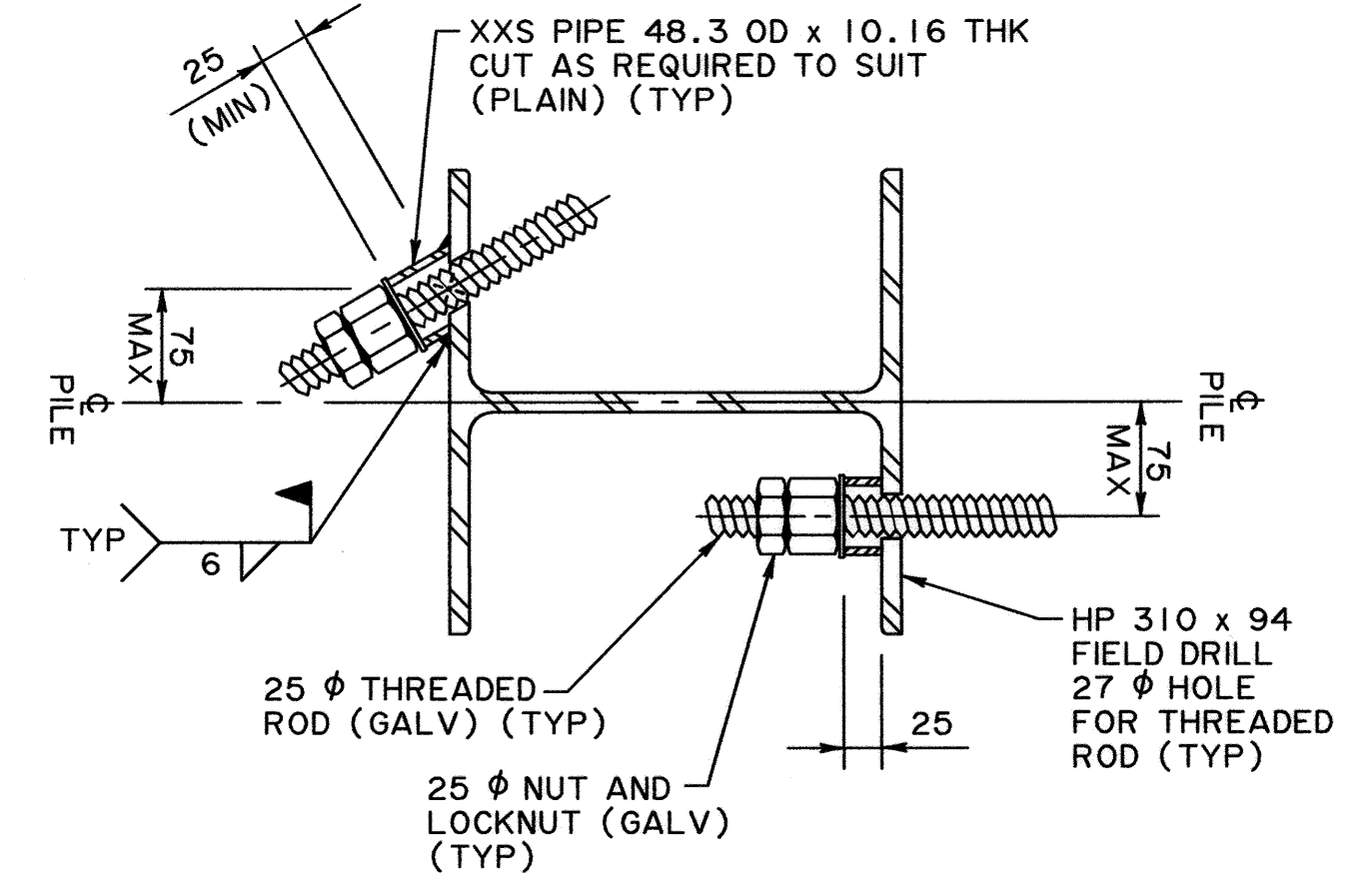
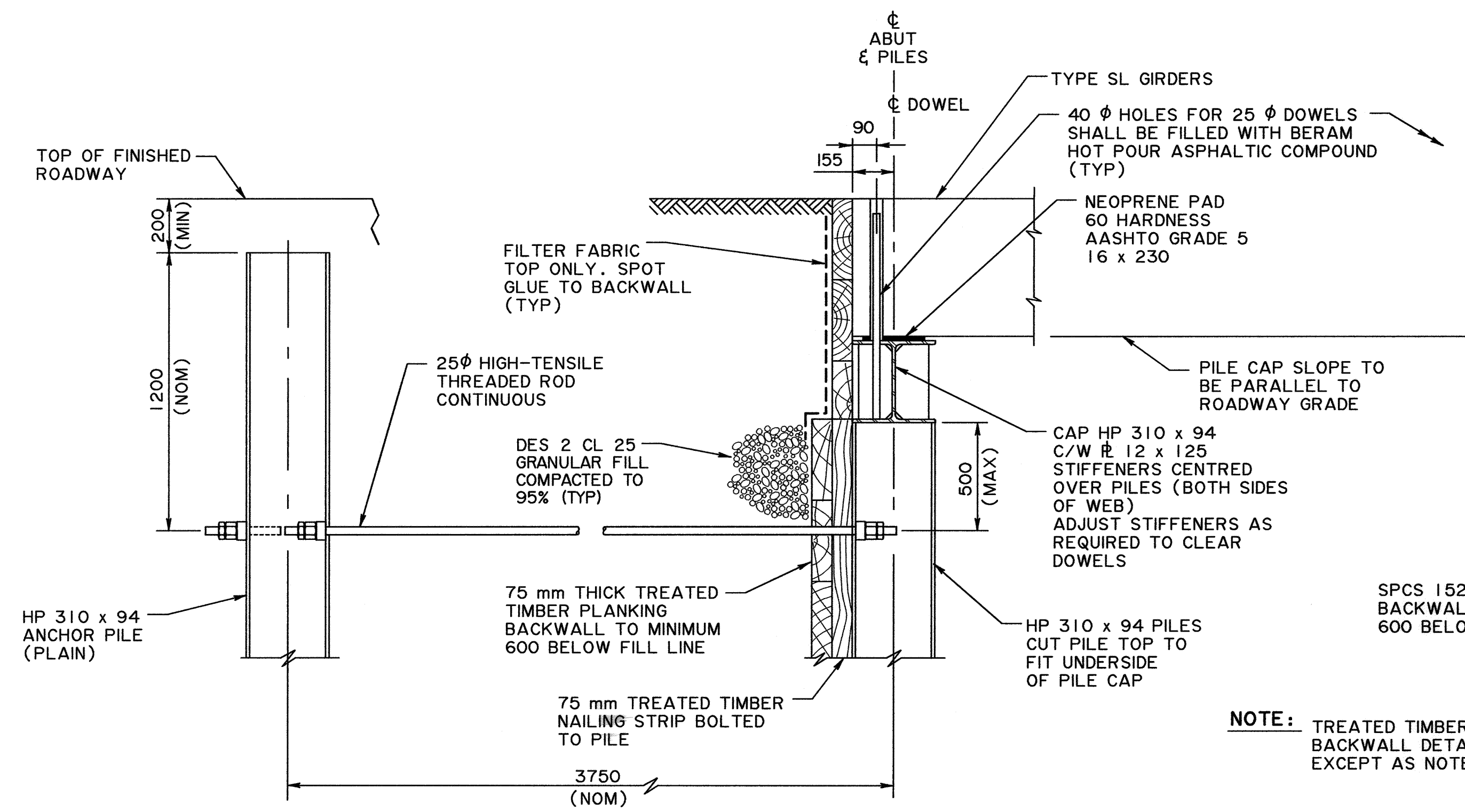


DATA FOR STANDARD SKEWED SL PRECAST GIRDER BRIDGES

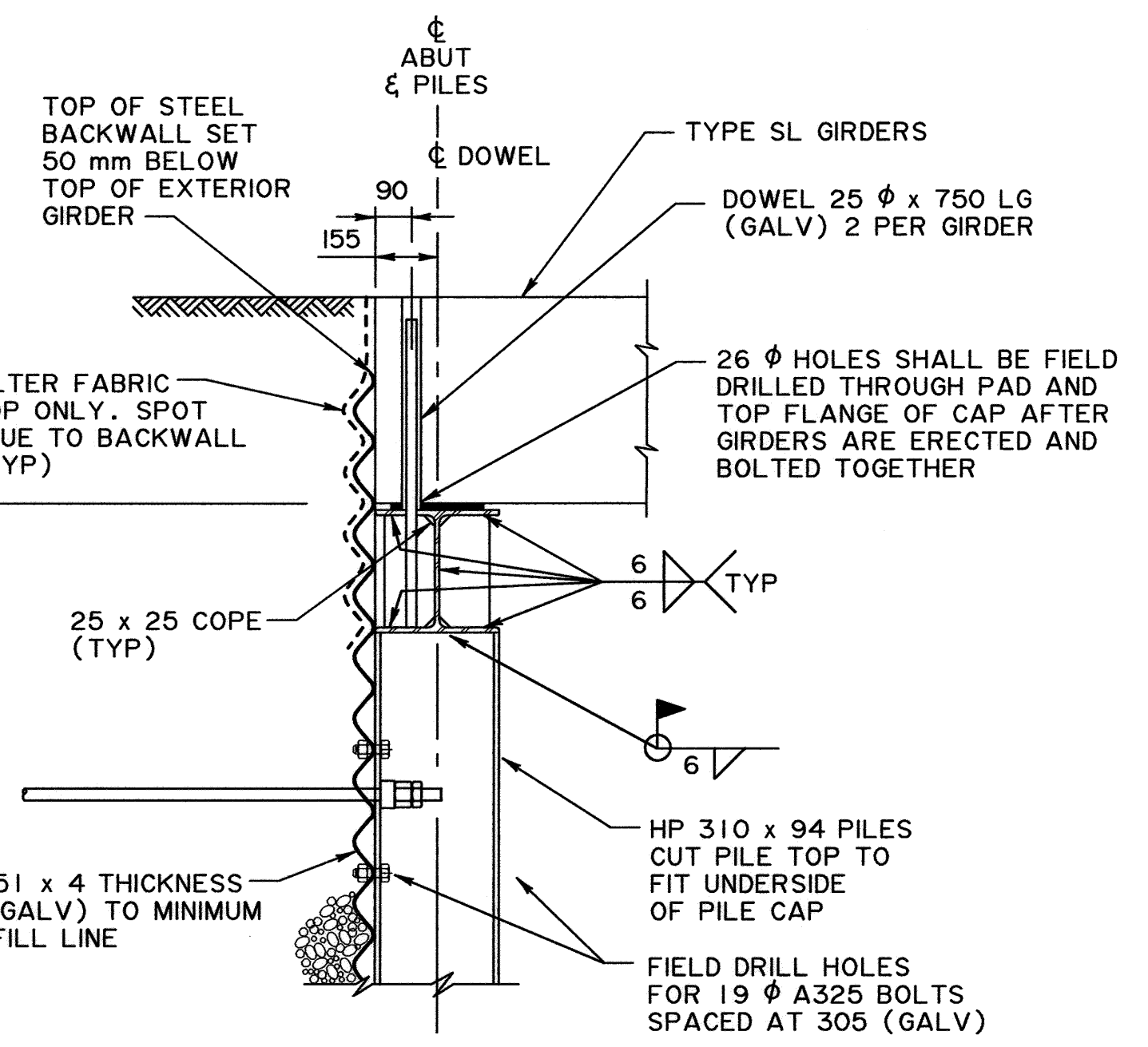
CLEAR ROADWAY (GIRDERS / SPAN) R	8 940 (8)				10 160 (9)				11 370 (10)				12 590 (11)				13 810 (12)				15 020 (13)				
	SKEW	0°	15°	30°	45°	0°	15°	30°	45°	0°	15°	30°	45°	0°	15°	30°	45°	0°	15°	30°	45°	0°	15°	30°	45°
OVERALL LENGTH	W	12 740	13 190	14 710	18 017	13 960	14 452	16 120	19 742	15 170	15 705	17 517	21 454	16 390	16 969	18 926	23 179	17 610	18 231	20 334	24 904	18 820	19 484	21 731	26 615
PILE CAP LENGTH	A	9 920	10 270	11 455	14 030	11 140	11 533	12 863	15 754	12 350	12 786	14 261	17 466	13 570	14 049	15 669	19 191	14 790	15 312	17 078	20 916	16 000	16 564	18 475	22 627
CROWN	B	99	99	99	99	111	111	111	111	124	124	124	124	136	136	136	136	148	148	148	148	160	160	160	160
DIFFERENTIAL FOR ROADWAY GRADE OF	1% C	0	27	57	99	0	30	64	111	0	33	71	124	0	36	78	136	0	40	85	148	0	43	92	160
	2% C	0	53	115	198	0	60	129	223	0	66	143	247	0	73	157	271	0	79	171	296	0	86	185	320
	3% C	0	80	172	298	0	90	193	334	0	99	214	371	0	109	235	407	0	119	256	444	0	129	277	480
NUMBER - LOAD BEARING		6	7	8	9	7	8	8	10	8	8	9	12	9	9	10	13	9	10	11	14	10	11	12	15
SPACING	D	1 642	1 445	1 435	1 630	1 572	1 419	1 636	1 640	1 520	1 589	1 606	1 498	1 482	1 556	1 584	1 517	1 635	1 524	1 567	1 533	1 588	1 496	1 551	1 546
END DISTANCES	E	855	800	705	495	855	800	705	495	855	800	705	495	855	800	705	495	855	800	705	495	855	800	705	495
NUMBER OF DOWELS PER LINE		16	16	16	16	18	18	18	18	20	20	20	20	22	22	22	22	24	24	24	24	26	26	26	26
EXTERIOR GIRDER LOCATION FROM ϕ BRIDGE	M	4 859	5 030	5 611	6 872	5 467	5 660	6 313	7 732	6 075	6 289	7 015	8 591	6 683	6 919	7 717	9 451	7 291	7 548	8 419	10 311	7 899	8 178	9 121	11 171



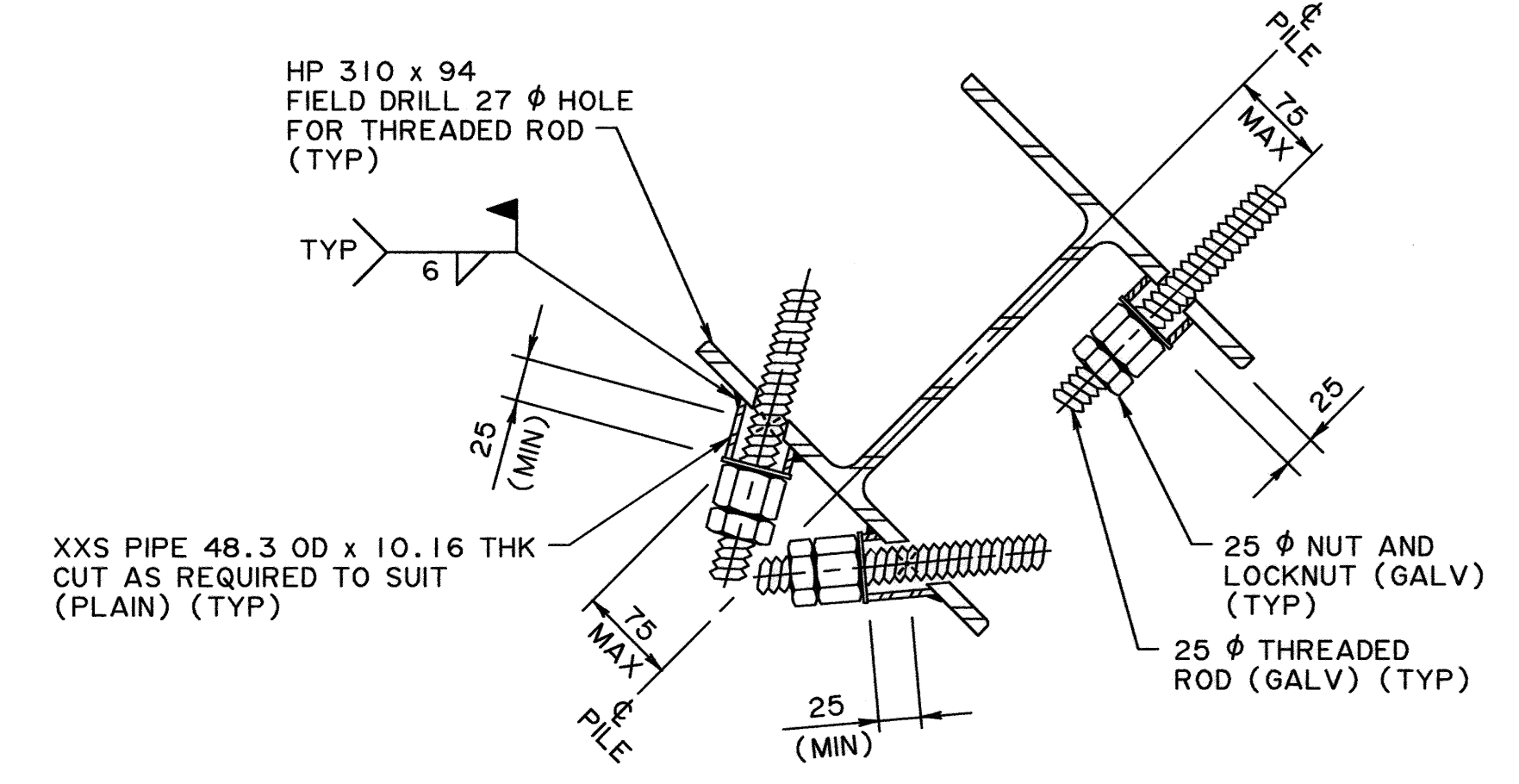
P DETAIL - ANCHOR PILE
S-1793-08 1:5



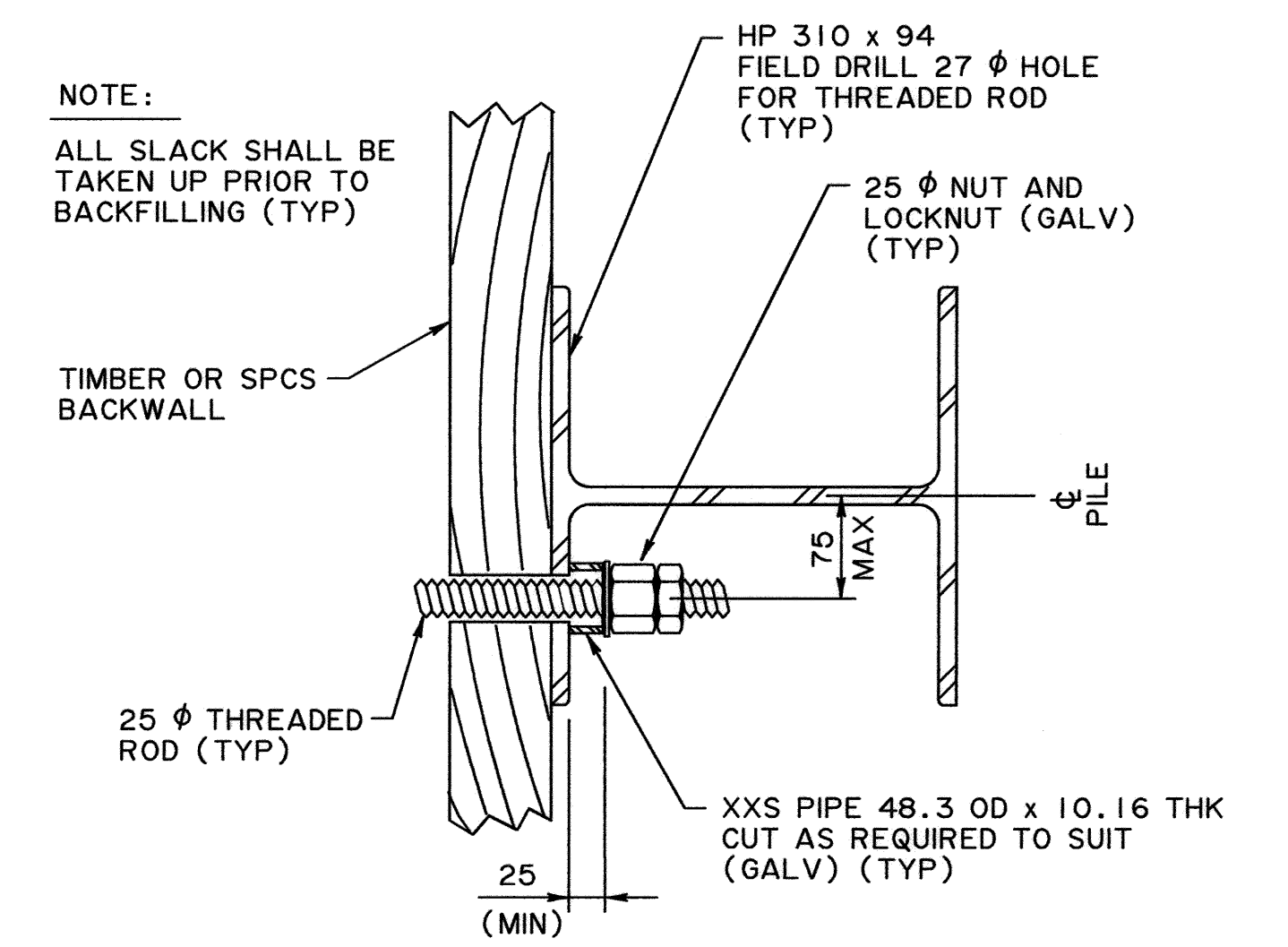
A BACKWALL
S-1793-08 (TREATED TIMBER PLANKING) 1:15
S-1794-08



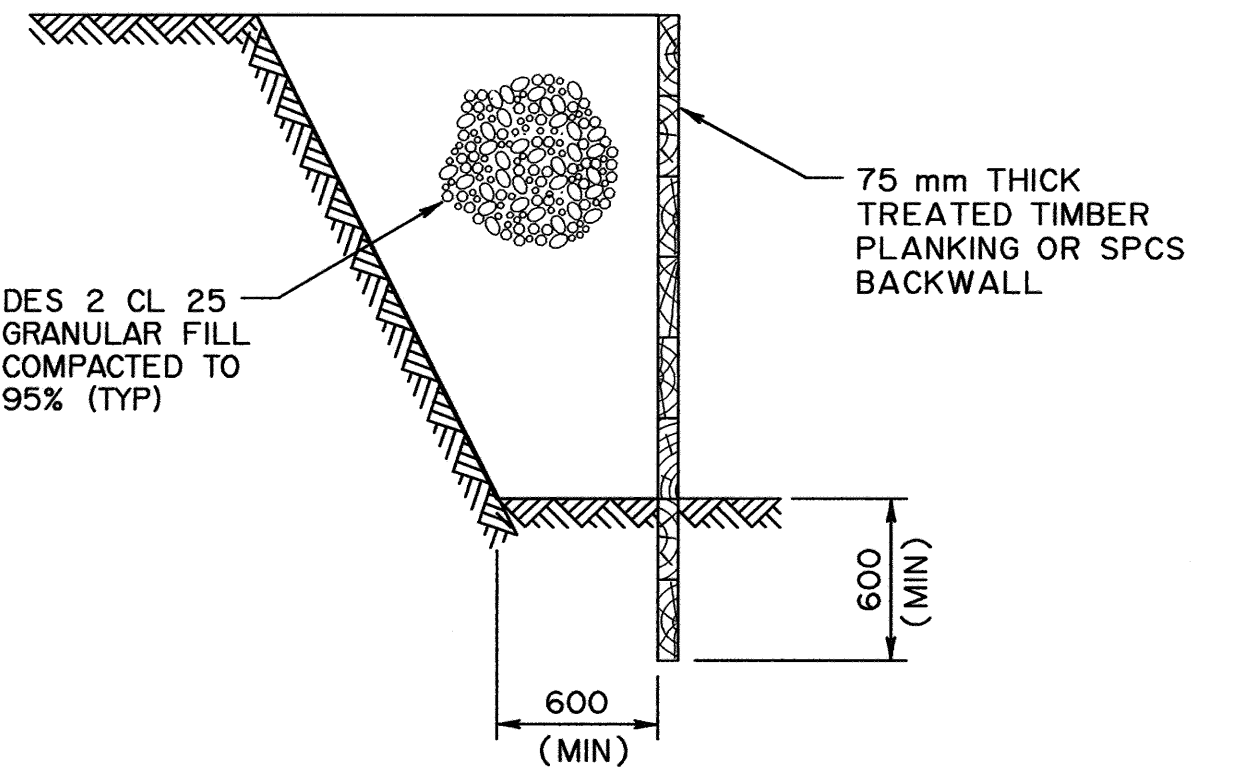
A BACKWALL
S-1793-08 (SPCS BACKWALL) 1:15
S-1794-08



P DETAIL - WINGWALL ANCHOR PILE
S-1793-08 1:5



R DETAIL - WINGWALL PILE
S-1793-08 1:5



BACKFILL DETAIL
NTS

	PERMIT TO PRACTICE MOST ENGINEERING (2001) LTD. Signature: <i>[Signature]</i> Date: Aug 15, 2008 PERMIT NUMBER: P 8959 The Association of Professional Engineers, Geologists and Geophysicists of Alberta	DESIGNER 	CHECKER 	RECOMMENDED DIRECTOR BRIDGE ENGINEERING <i>Tom Loo</i>	
		DATE: Aug 15, 2008	DATE: 08/15/2008	APPROVED EXECUTIVE DIRECTOR TECHNICAL STANDARDS BRANCH <i>Allan Owen</i>	
AT BAR CODE		DATE: 2008-08-18	SHEET: 3 of 4	DRAWING: S-1795-08	