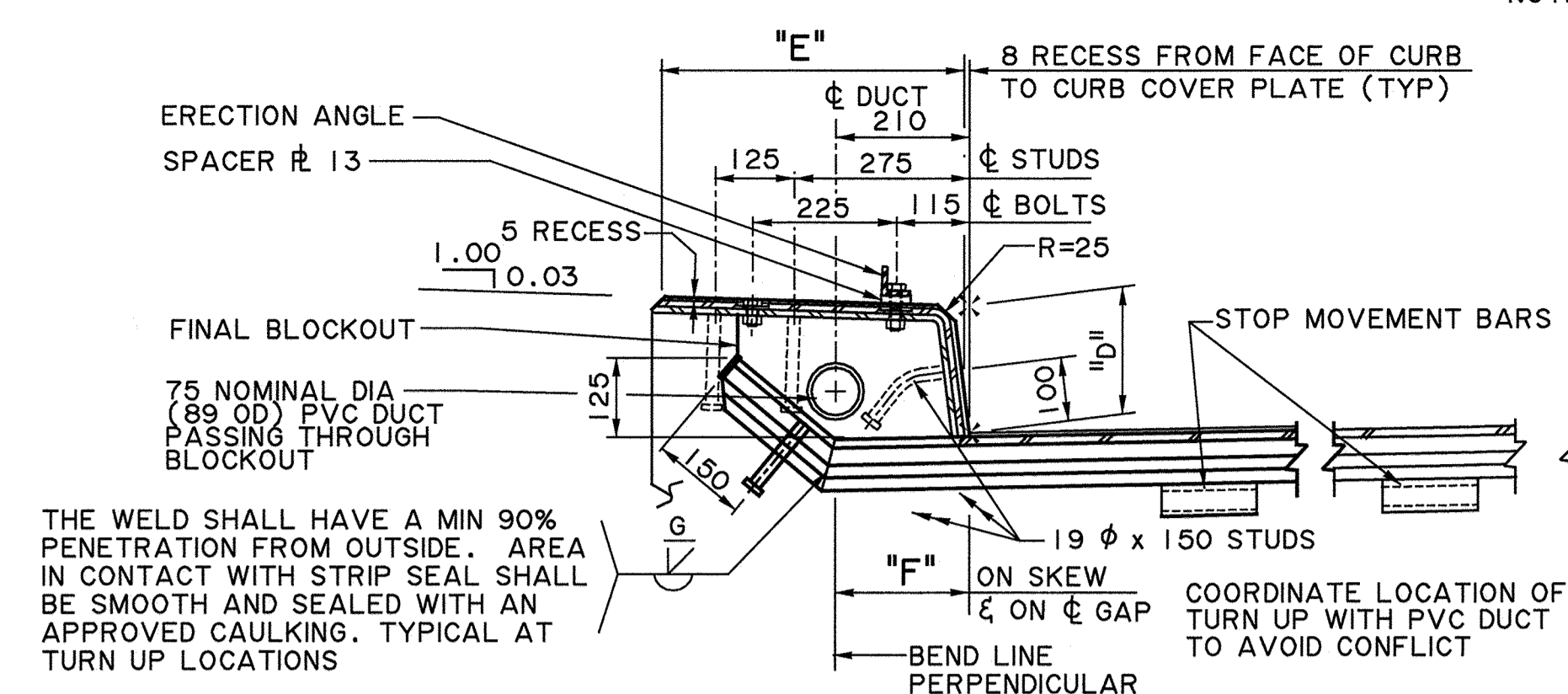
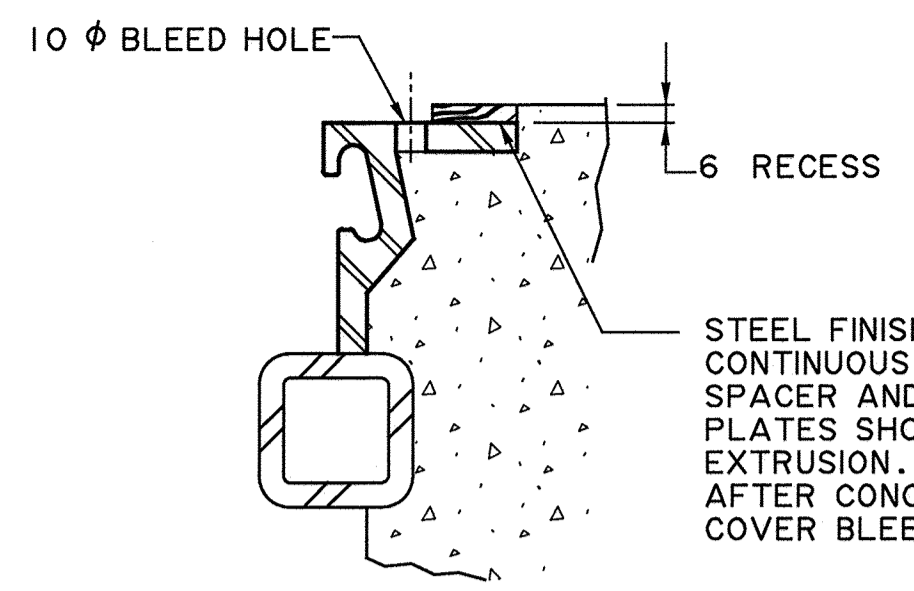


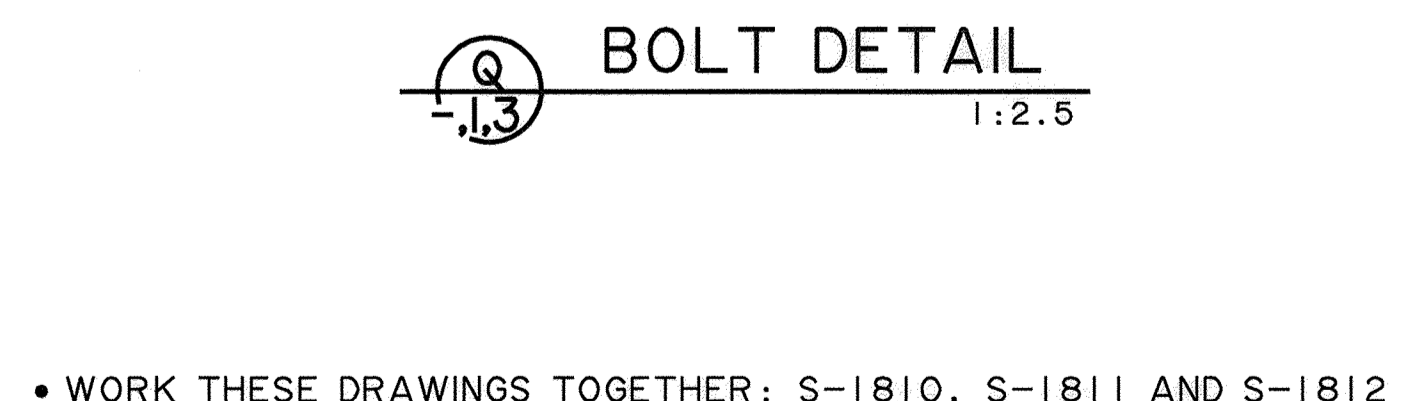
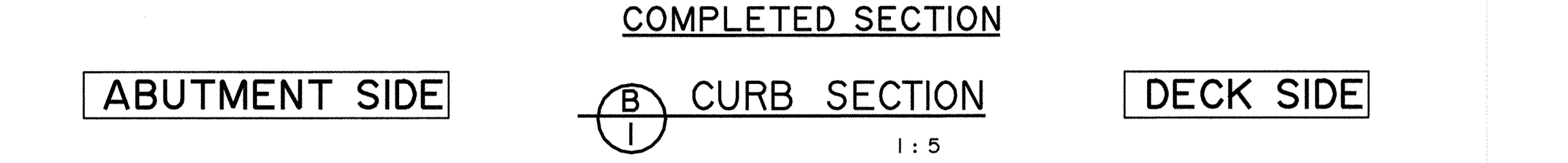
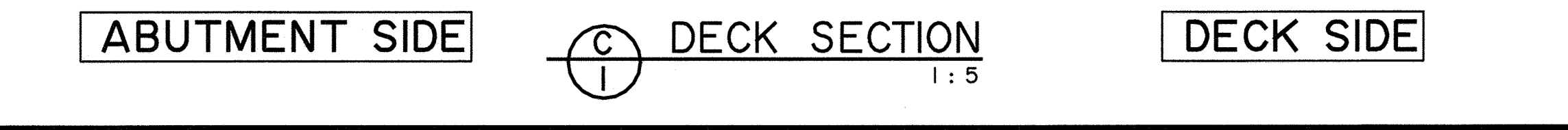
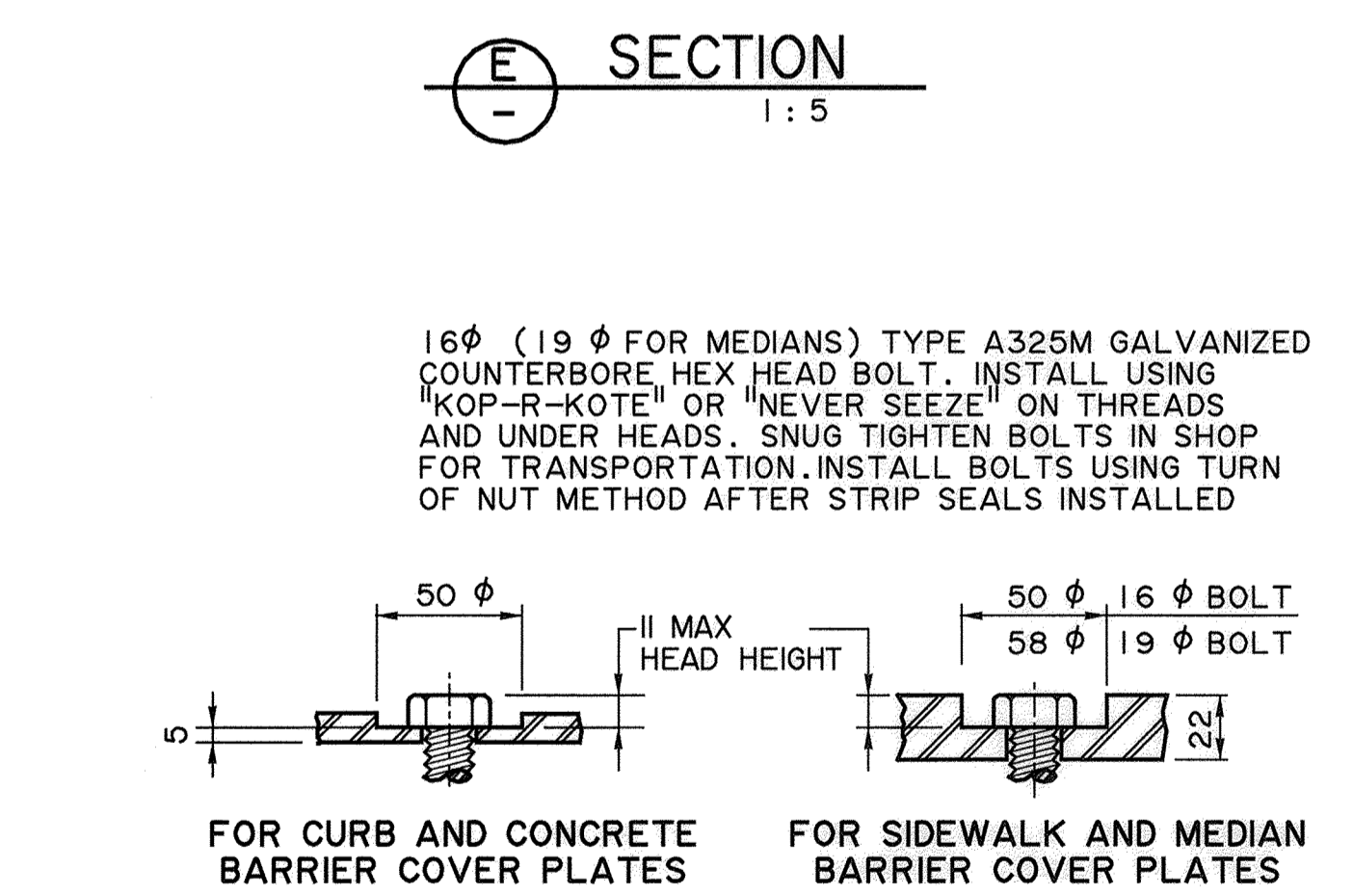
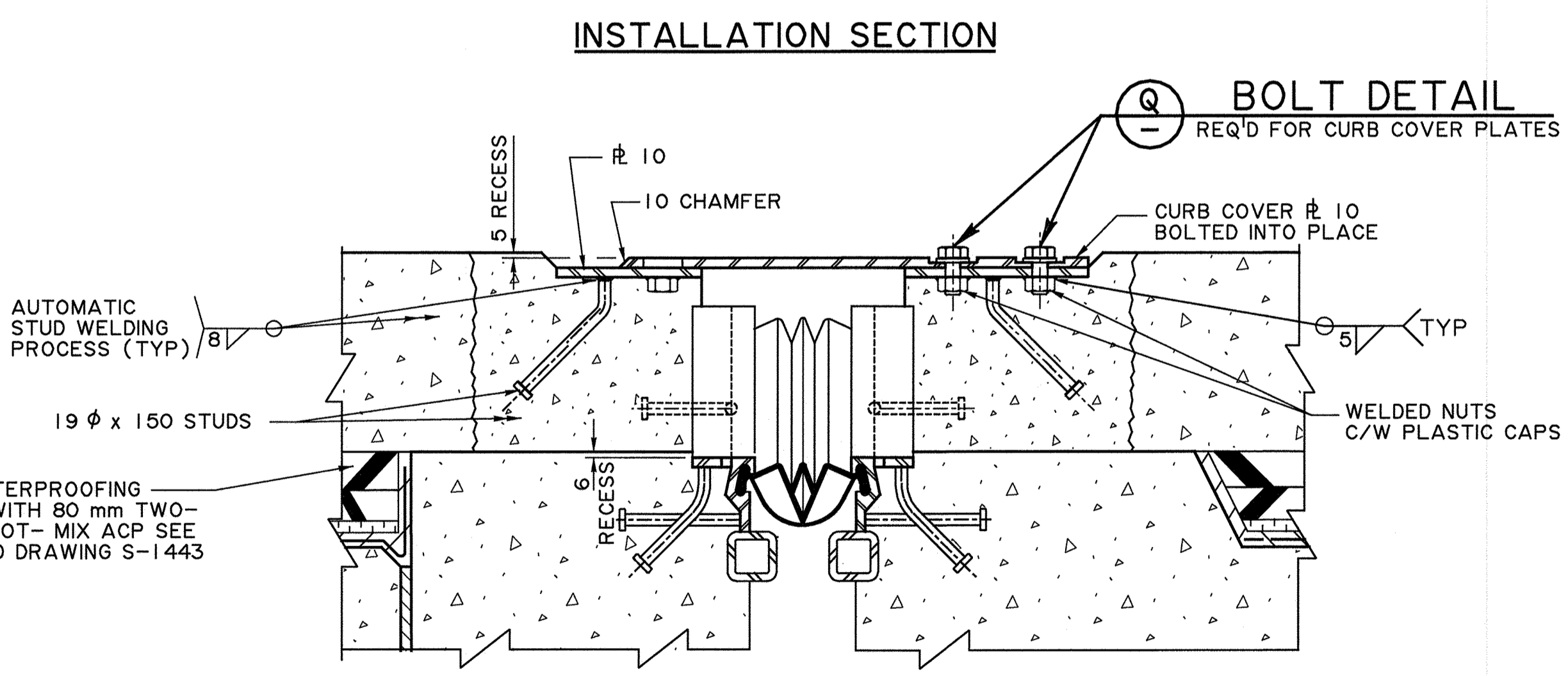
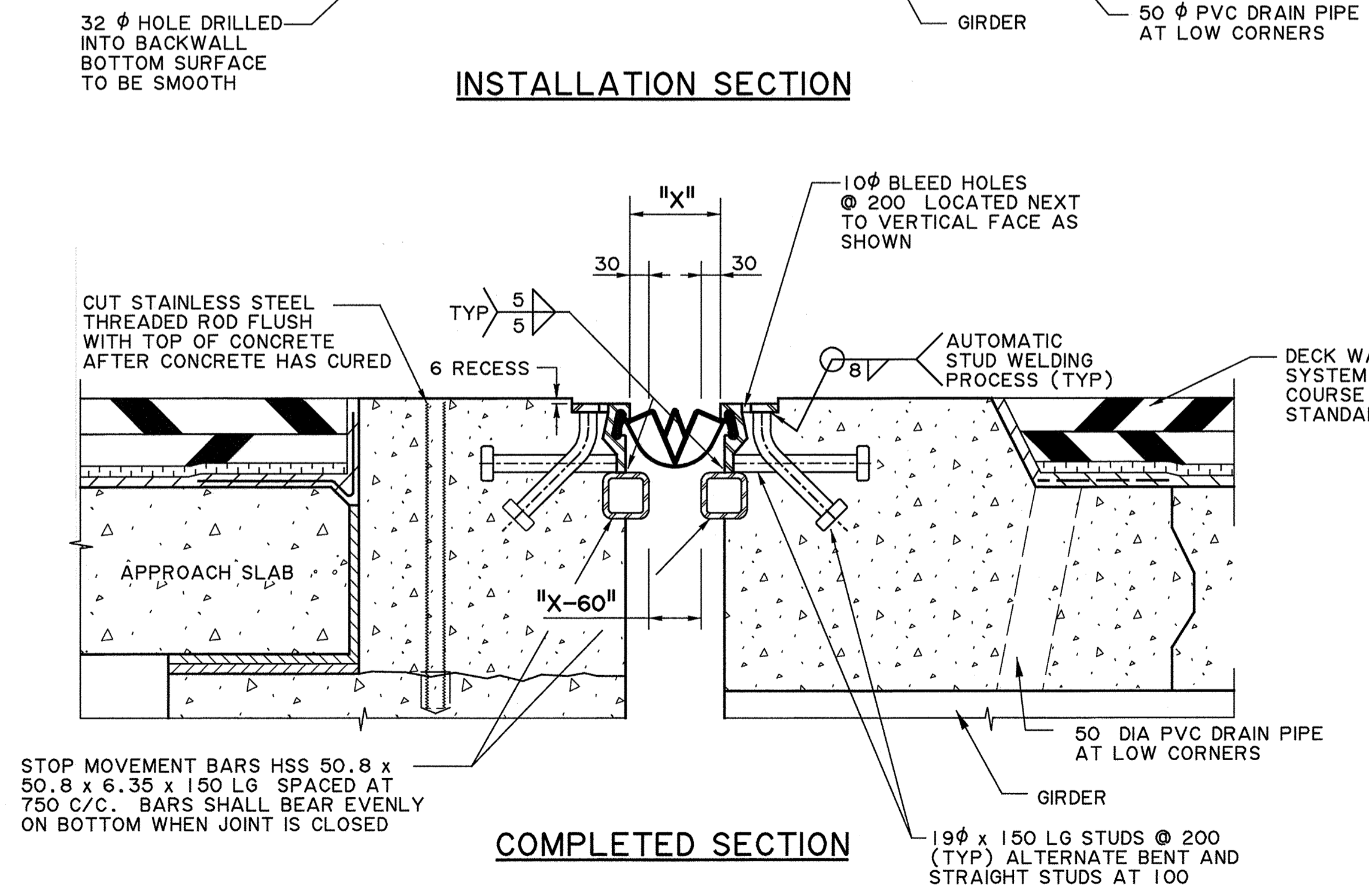
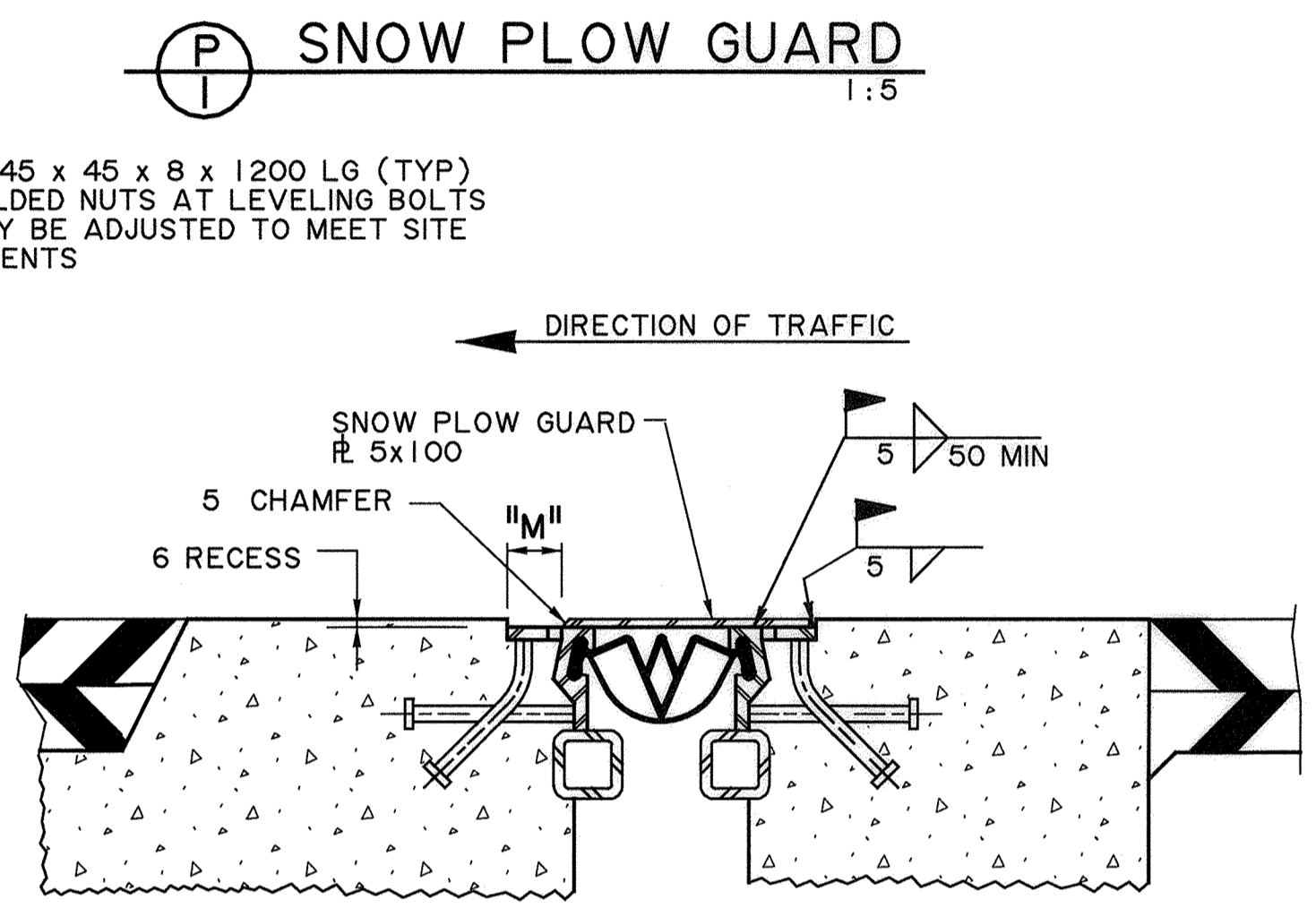
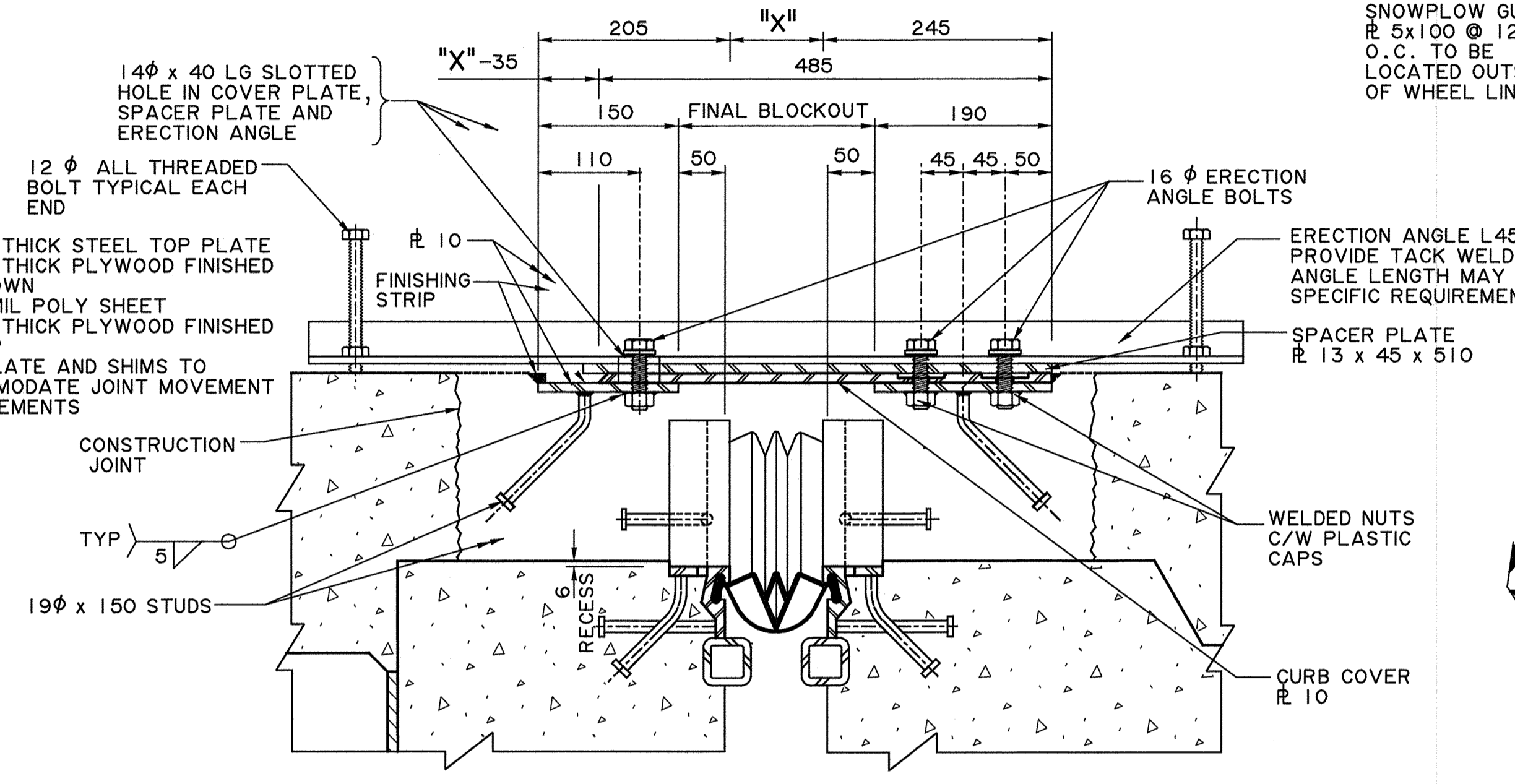
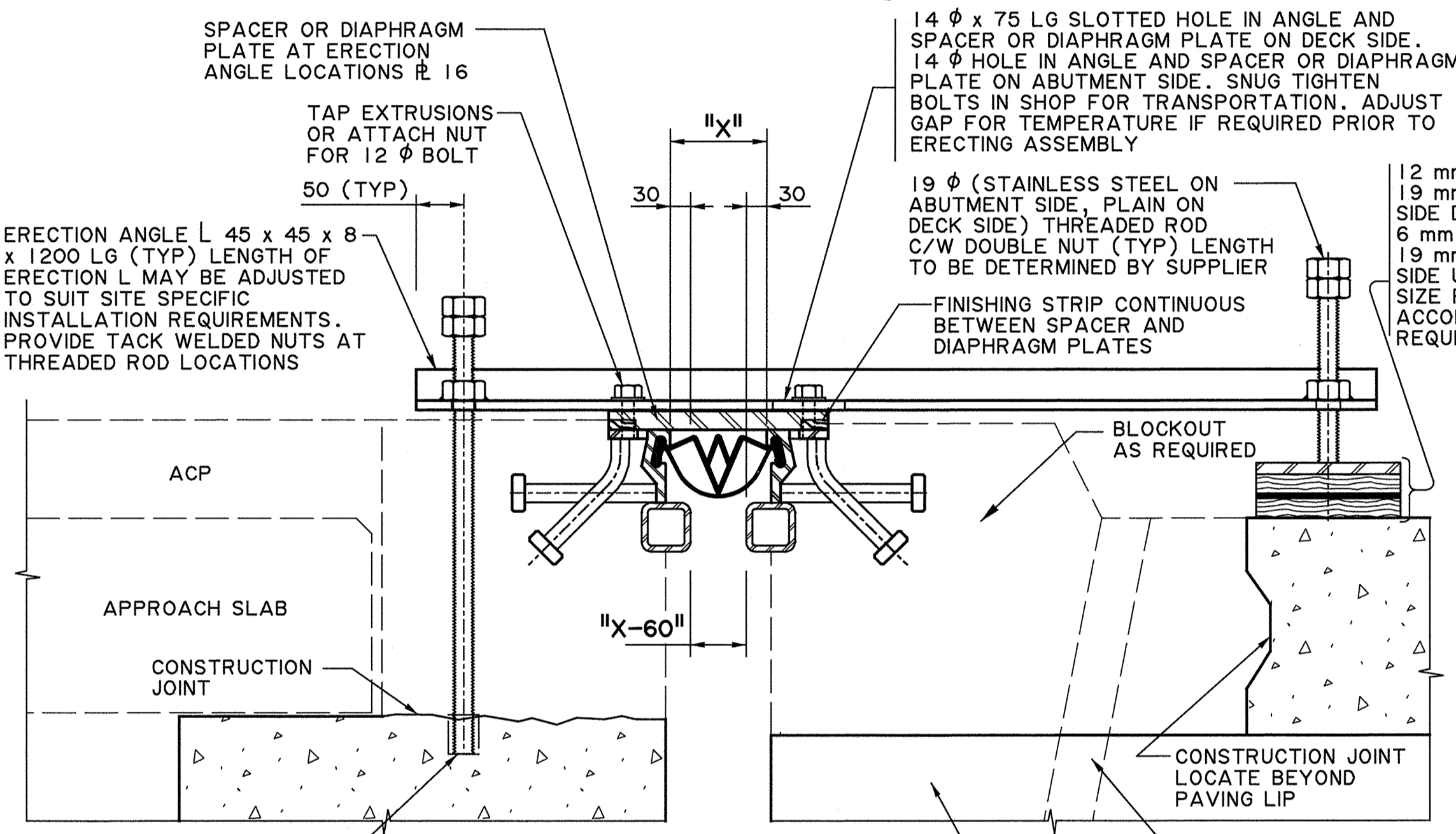
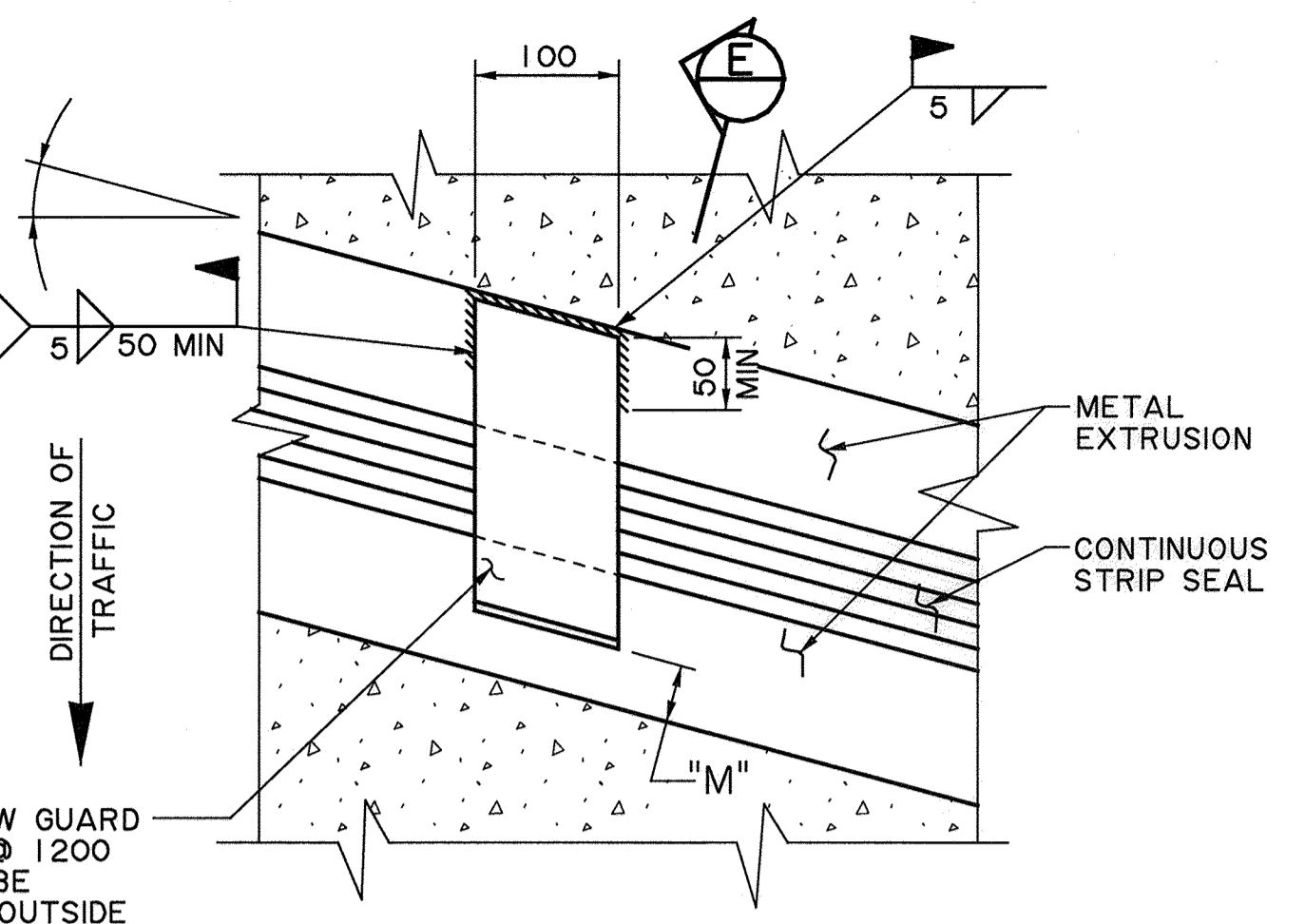
NOTE: ROADWAY SHOWN WITH A CROWN AND FIELD SPLICE AT CENTERLINE ROADWAY. REFER TO SITE SPECIFIC DRAWINGS FOR DETAILS



SHOP PREPARE EDGES FOR FIELD WELD. WELD TOP OF EXTRUSION AND THE BACKSIDE EXPOSED TO CONCRETE. THE WELD SHALL HAVE A MIN 90% PENETRATION FROM THE OUTSIDE. AREA IN CONTACT WITH STRIP SEAL SHALL BE SMOOTH AND SEALED WITH AN APPROVED CAULKING.



SNOW PLOW GUARDS PROVIDED FOR SKEW = 20° TO 45° INCLUSIVE
GRIND OFF GALVANIZING AT FIELD WELD LOCATIONS METALIZE AFTER WELDING



• WORK THESE DRAWINGS TOGETHER: S-1810, S-1811 AND S-1812

RECOMMENDED DIRECTOR BRIDGE ENGINEERING		Government of Alberta ■ Transportation	
APPROVED EXECUTIVE DIRECTOR TECHNICAL STANDARDS BRANCH		TYPE I STRIP SEAL DECK JOINT - SHEET 2	
DESIGNER	CM CM	CHECKER	REJRY
DATE	Jan 19/2012	DATE	2012-01-19
REVISIONS		SHEET	2 OF 3
BY		DRAWING	S-1811-12

S-1811-12.DGN 2012-01-19 NH