

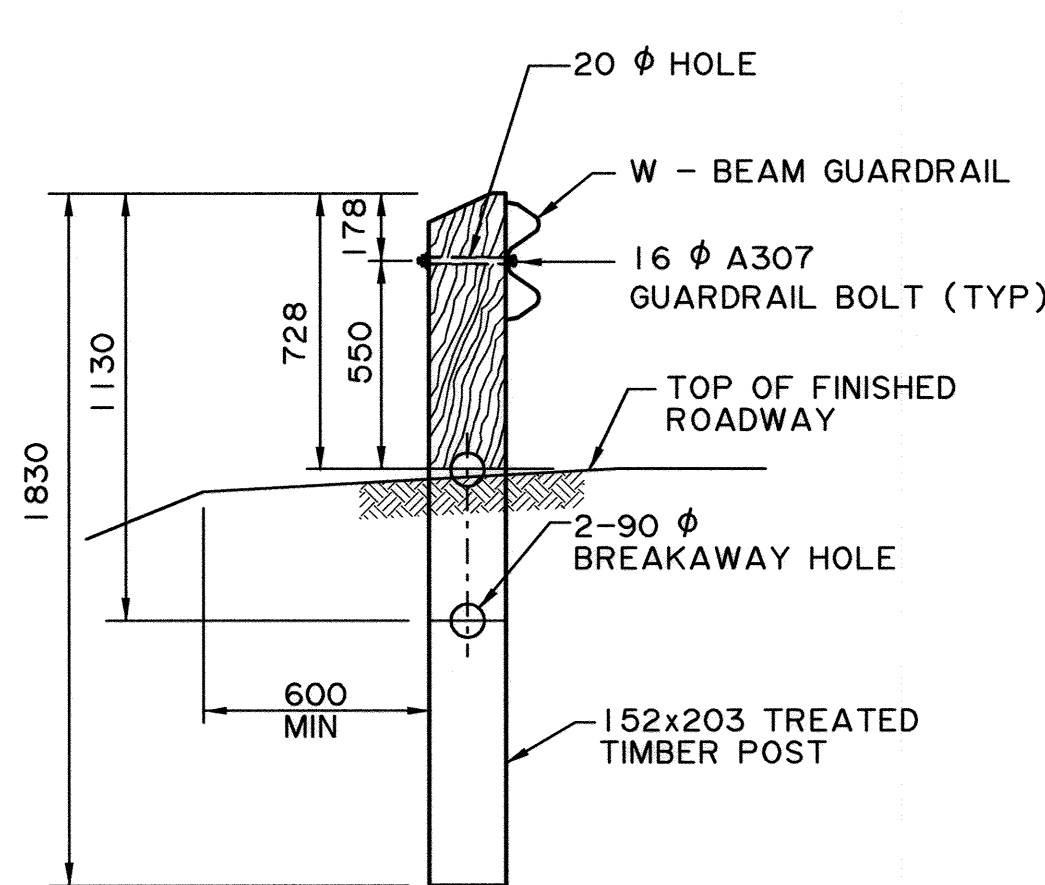
**GUARDRAIL ELEVATION**  
1:20

NOTE:  
AT MINIMUM, A SINGLE SPAN WITH POSITIVE ANCHOR IS REQUIRED. HOWEVER, BARRIER MAY CONTINUE FOR LENGTH OF NEED AND TERMINATE WITH AN APPROVED BARRIER END TREATMENT AS PER RDG SECTION H.3.3.3.2

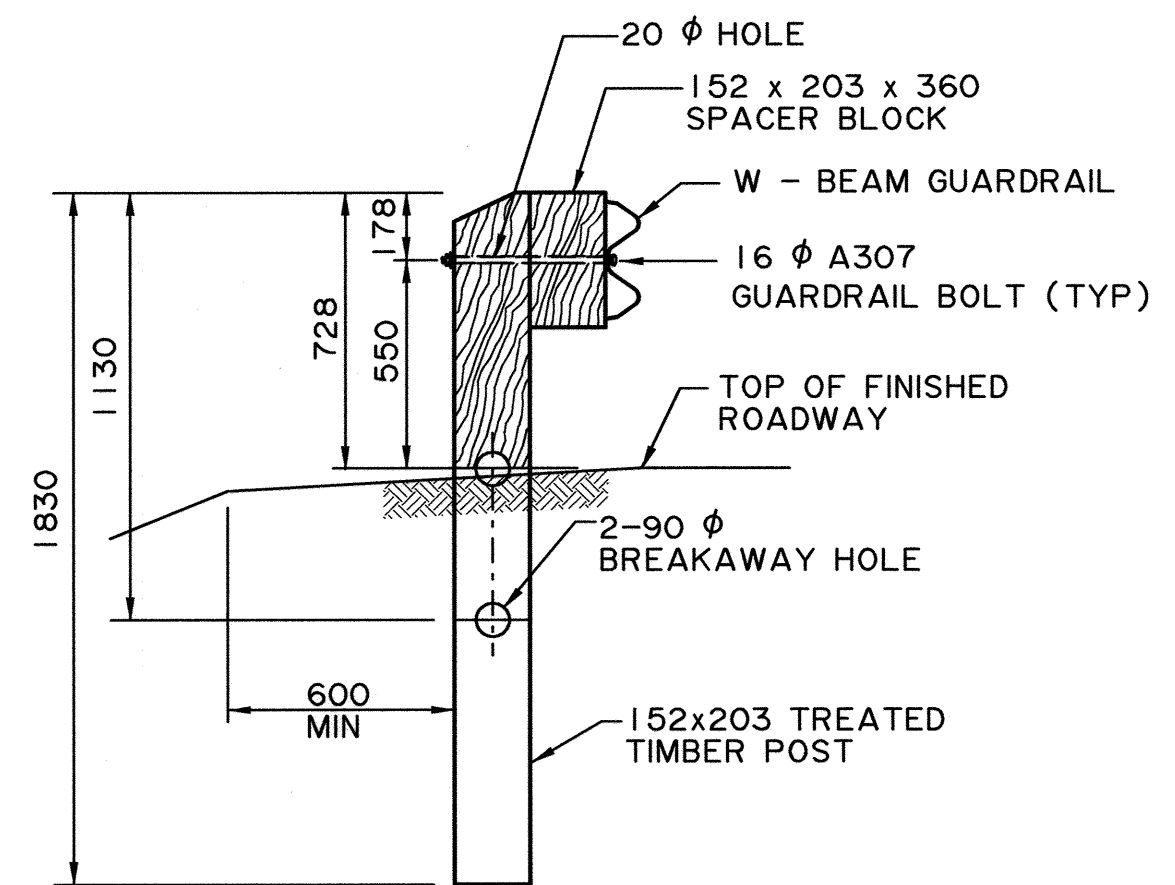
FOUNDATION TUBE (TYP) REFER TO RDG-B1.3 FOR DETAILS

REFER TO RDG-B1.2 FOR CABLE ANCHOR HARDWARE DETAILS

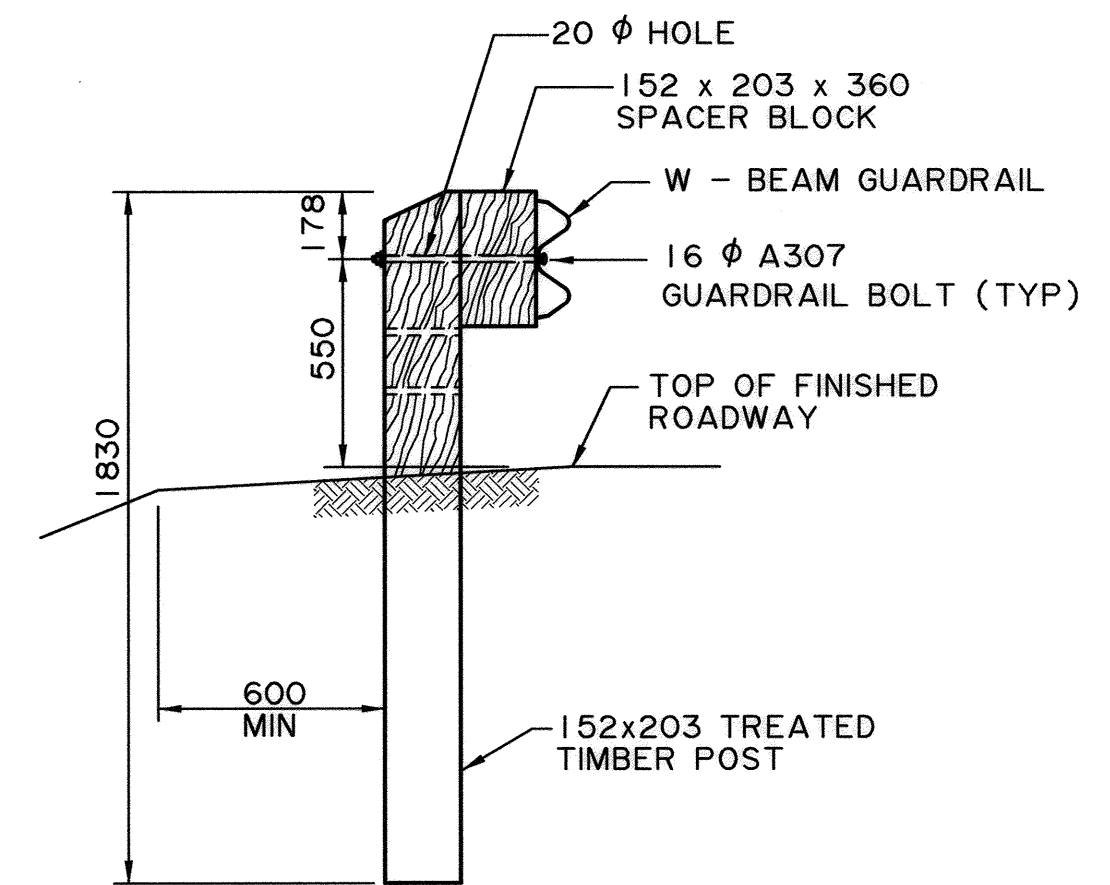
FOUNDATION TUBE SOIL PLATE (TYP) REFER TO RDG-B1.3 FOR DETAILS



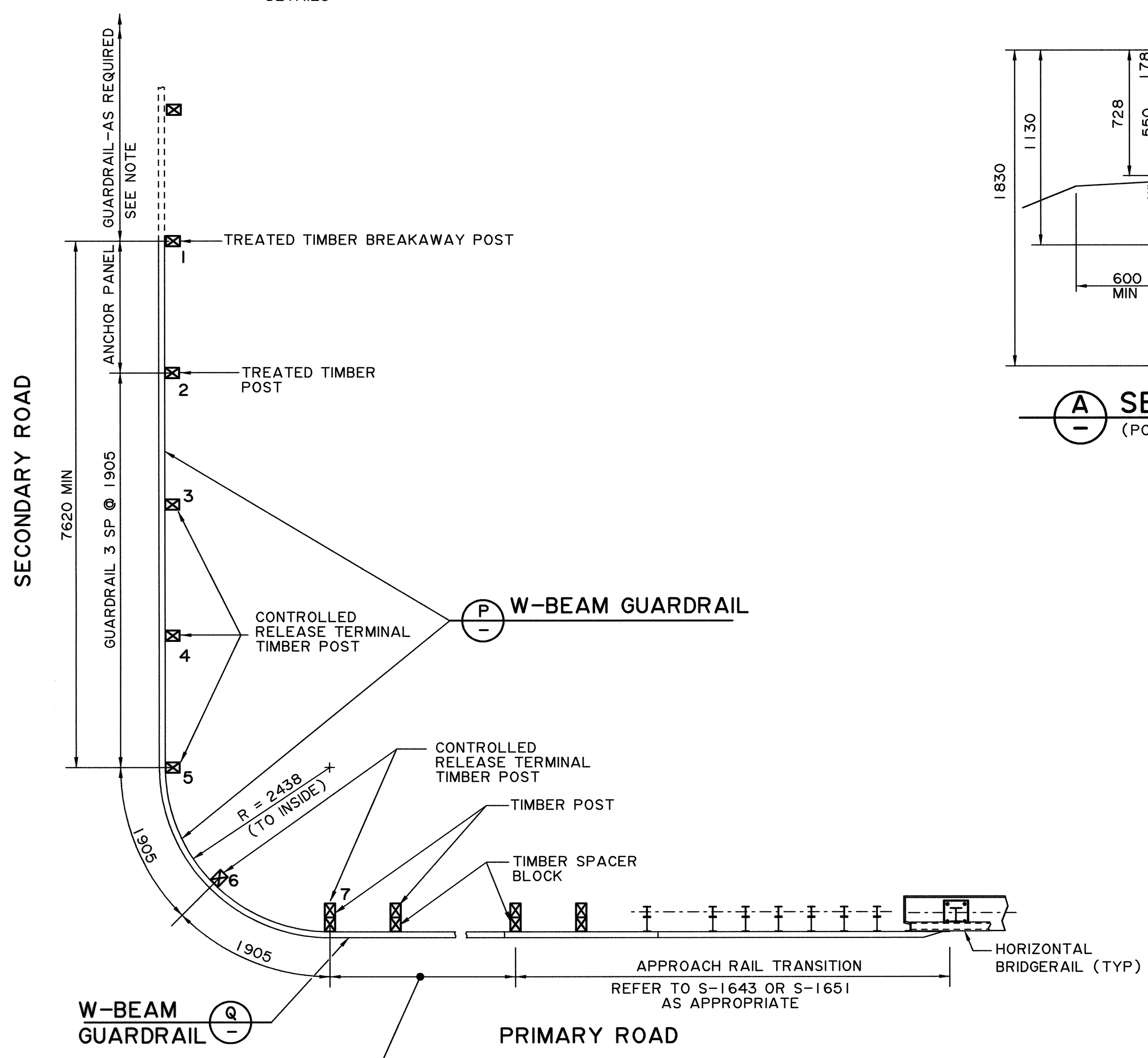
**A SECTION**  
(POST 3 TO 6) 1:20



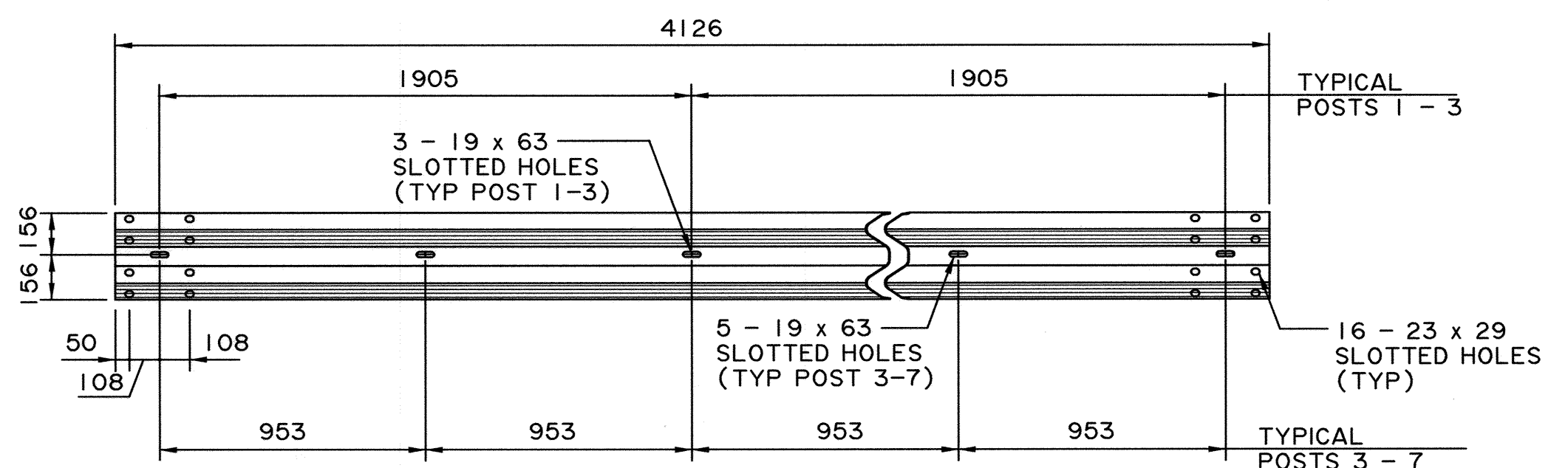
**B SECTION**  
(POST 7) 1:20



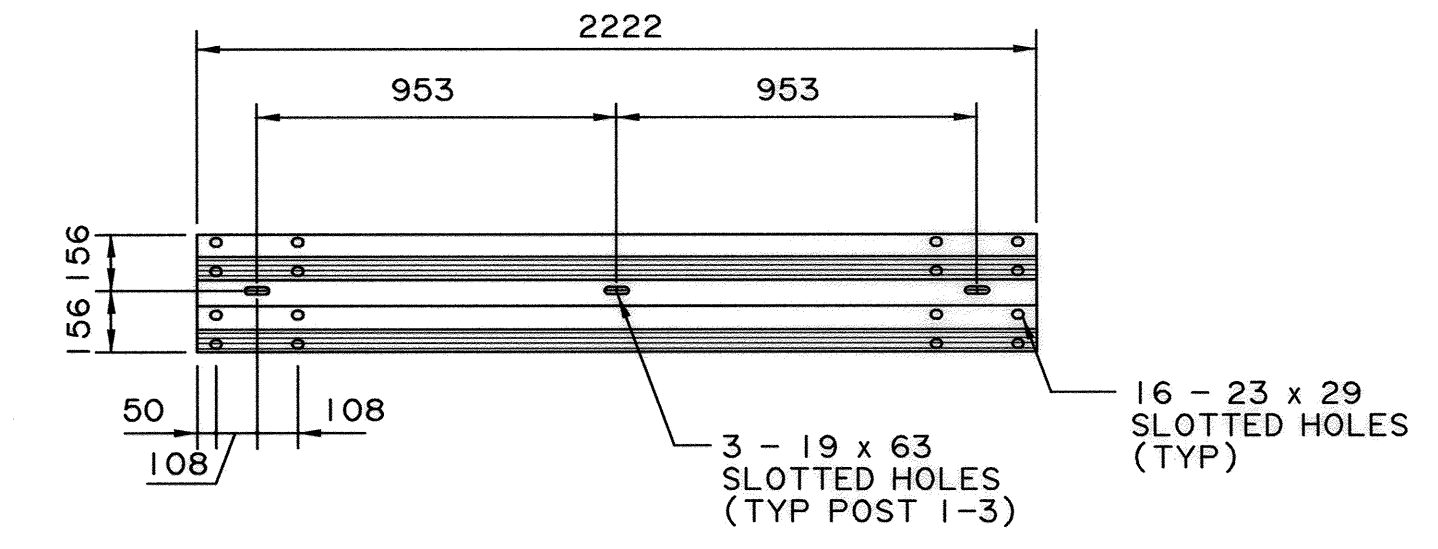
**C SECTION**  
(IF REQUIRED) 1:20



**PLAN OF THE SECONDARY & PRIMARY ROAD**  
1:50



**P W-BEAM GUARDRAIL**  
1:20



**Q W-BEAM GUARDRAIL**  
1:20

**GENERAL NOTES**

- ALL DIMENSIONS ARE IN MILLIMETRES UNLESS OTHERWISE NOTED
- RAILING CONFIGURATION IS BASED ON A RAILING CONFIGURATION THAT HAS BEEN CRASH TESTED AND MEETS THE REQUIREMENTS OF NCHRP 350, TEST LEVEL 2. (EQUIVALENT TO PERFORMANCE LEVEL 1 OF AASHTO GUIDE SPECIFICATIONS FOR BRIDGE RAILING, 1989)
- REPAIR ANY DAMAGED GALVANIZING ON W-BEAM GUARDRAIL TO ASTM A780

RECOMMENDED DIRECTOR BRIDGE ENGINEERING		Government of Alberta ■ Transportation	
APPROVED EXECUTIVE DIRECTOR TECHNICAL STANDARDS BRANCH		TL-2 W-BEAM GUARDRAIL APPROACH RAIL AT INTERSECTION DETAILS	
DESIGNER	CHECKER	DATE	DRAWING
U.S.MES	Ry	MAR. 5/12	S-1815-11
REV	DATE	REVISIONS	BY

76K/NI/WS 2012-02-29 S-1815-11.DGN