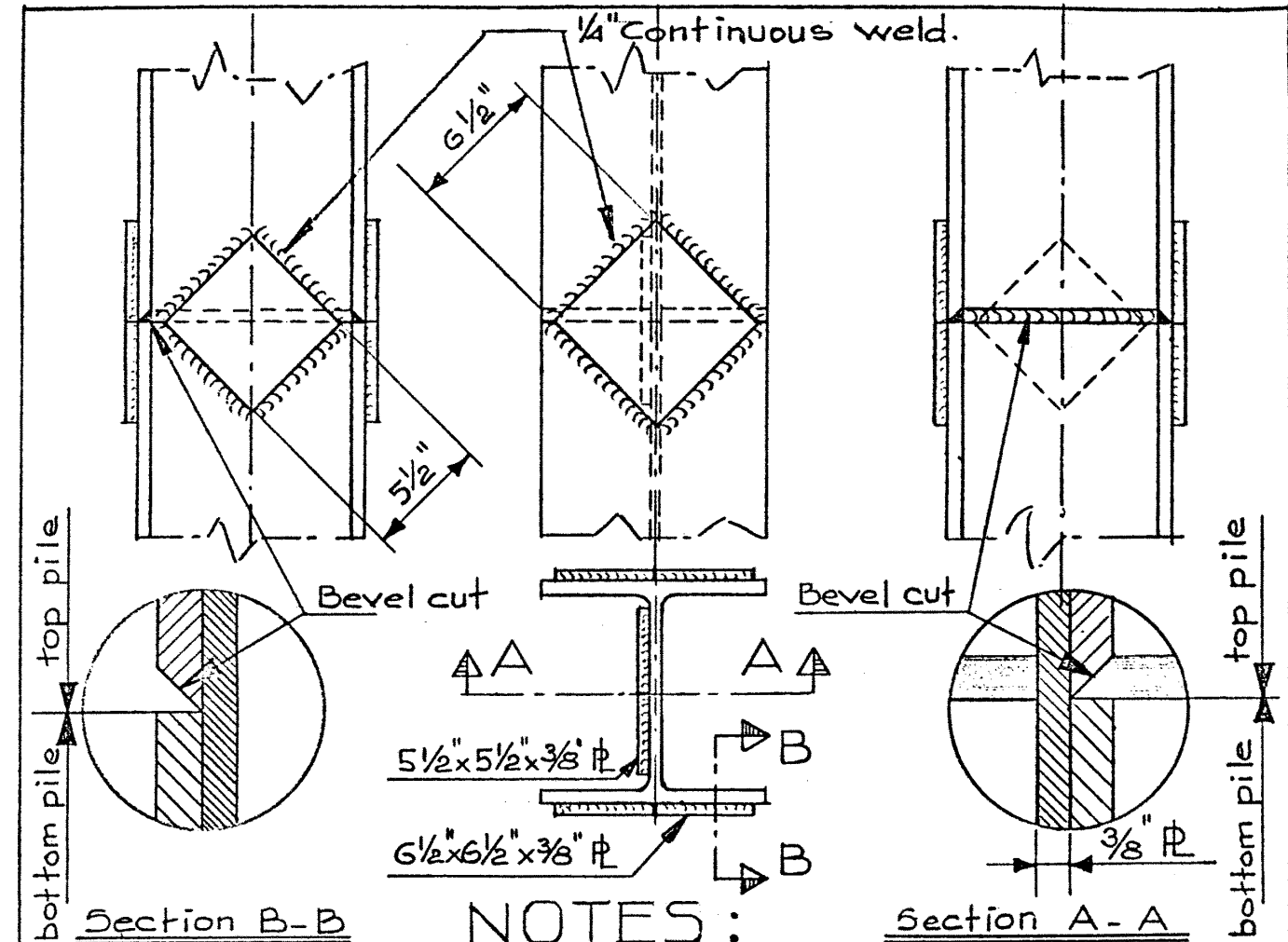


Form B 3011



Section B-B

NOTES:

Section A-A

1. All welders shall hold a current Alberta second class certificate of proficiency.
2. Weld plates to top pile before placing pile in position.
3. Weld splice plates to bottom pile.
4. Butt weld any opening remaining between piles.
5. All piles to be flame cut using a steel yoke to secure a square and even cut.
6. Splice plates to be supplied by the Department.
7. When the air temperature is below 32° F. all material to be welded shall be preheated to 200° F. & sheltered from wind. The material shall be preheated to a distance 3" beyond the weld.
8. When the air temperature is below 0° F. welding will not be permitted unless suitable hoarding is provided and approved by the Engineer.

STANDARD STEEL H-PILE SPLICE

Scale 1/2" = 1'-0

Febr. 2 - 1962

SUPERSEDED
 BY S-1055 NOV. 8, 1971
 NO Dwg. 5-499

AT & U - RECORDS CENTRE
 F169817