

TYPICAL HALF SECTION OVER CAP & SWAY BRACING DETAILS

TYPICAL HALF SECTION AT MIDSPAN & SHEATHING DETAILS

NOTES

TREATMENT OF TIMBER - IMPORTANT

- Pile tops under caps shall be coated with three (3) applications of creosote oil and thoroughly covered with hot roofing pitch.
- Exposed pile tops shall be treated as above, and in addition, shall be covered with a sheet of 18ga. galvanized iron, of a size of at least 4" greater in diameter than the pile, to be bent down, neatly trimmed, and fastened to pile face with galvanized roofing nails.
- Treated timber shall be carefully handled so as to avoid breaking of outer fibers, or bruising or penetrating the surface with tools.
- Before laying subdeck, tops of stringers shall be coated with one liberal coat of creosote oil.
- All cuts and abrasions in treated timber, shall, after careful trimming, be coated with two (2) applications of creosote oil, and be covered with hot roofing pitch.
- Bolt holes bored after treatment shall be carefully treated with creosote oil. Any unfilled holes shall be sealed with creosoted plugs.

**STRIPDECK** shall be spruce or pine, SISIE, and shall be laid heartside down with tight joints for unseasoned material. At end of bridge, stripdeck to be beveled.

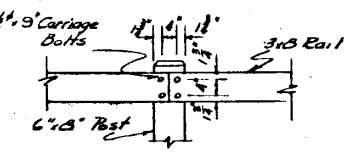
**NAILING** - 4" subdeck shall be spiked to each stringer with 7" spikes staggered along plank, and 2 spikes in edge stringer.

Stripdeck planks shall be nailed with 1-6" spike at 3'0" spacing, staggered along plank.

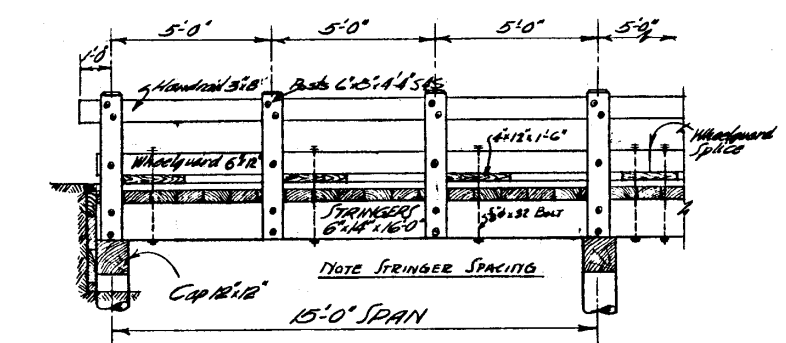
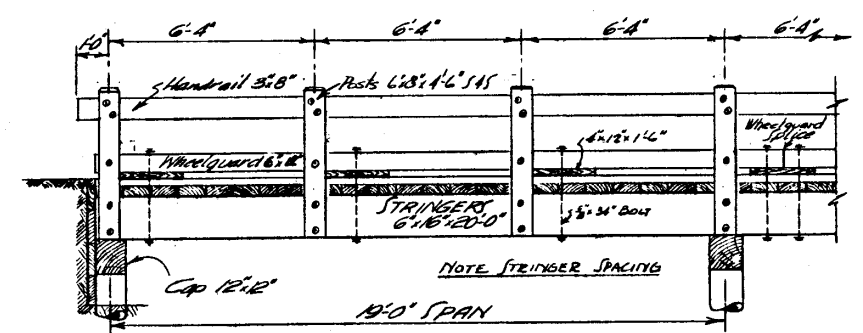
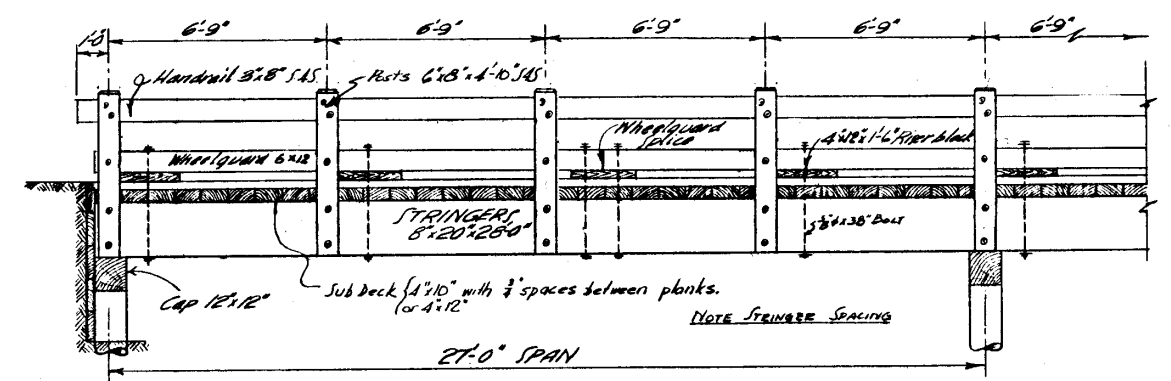
**STRINGERS**: Shall be sized to uniform depth at points of bearing, each fastened to caps with 3" drift bolts as shown. Outside stringers to have butt joints, intermediate stringers to have lap joints.

**BOLT HOLES** shall be drilled the same diameter as the bolt or drift.

**PAINTING** - Boltposts & Handrail shall be given three coats of approved white paint, on improved district highways.



HANDRAIL SPLICE



ELEVATION VIEWS

**SPECIFICATIONS**: Permissible fibre stress 1400 lbs per sq. inch.

Dead Load: 50 lbs per sq. ft. - Timber

Live Load: F.A.S.H.O. 1944, H15 with impact omitted.

- HARDWARE -				
BOLTS			WASHERS	
Type	Size	Where Used	No. per bolt	Type
CARRIAGE	3/4" x 9"	Handrails	2	M.I.
MACHINE	3/8" x 12"	Stringer butt joint (16' & 20')	2	O.G.
"	3/8" x 14"	Stringer butt joint (26')	2	"
"	3/8" x 14"	Stringers thru Posts (16' & 20')	2	"
"	3/8" x 16"	Stringers thru Posts (26')	2	O.G.
"	3/8" x 17"	Sway bracing (All spans)	2	O.G.
"	3/8" x 18"	Wheelguard to Posts (All spans)	1	M.I.
"	3/8" x 20"	Sway bracing (All spans)	2	O.G.
"	3/8" x 32"	Stringers thru curbs (16')	2	O.G.
"	3/8" x 34"	Stringers thru curbs (20')	2	"
"	3/8" x 38"	Stringers thru curbs (26')	2	"
DRIFT	3/4" x 22"	Stringers to caps		
"	3/4" x 22"	Cap to pile (All spans)		
"	3/4" x 24"	Stringers to caps (20')		
"	3/4" x 28"	Stringers to caps (26')		

**SUPERSEDED** BY S-519

APPROVED BY: *[Signature]*  
DATE: June 1/49

No	Date	DESCRIPTION REVISIONS
3		
2		
1		
NO		

PROVINCE of ALBERTA  
DEPARTMENT of PUBLIC WORKS  
BRIDGE BRANCH

1949 STANDARD TIMBER SPANS  
20'0" ROADWAY  
DISTRICT ROADS OR LOCAL ROADS

SCALE 3/8"=1'-0" Except as noted DATE MAY 18 1949  
DRAWING No. 5501 SHEET 1 of 5 sheets.

DESIGNED BY: M.C. Jan 18, 1949  
 DRAWN BY: M.C. Jan 18, 1949  
 CHECKED BY: E.J.S. May 1949  
 TRACED BY:

C. L. HARRISON ENGINEERS  
 178011