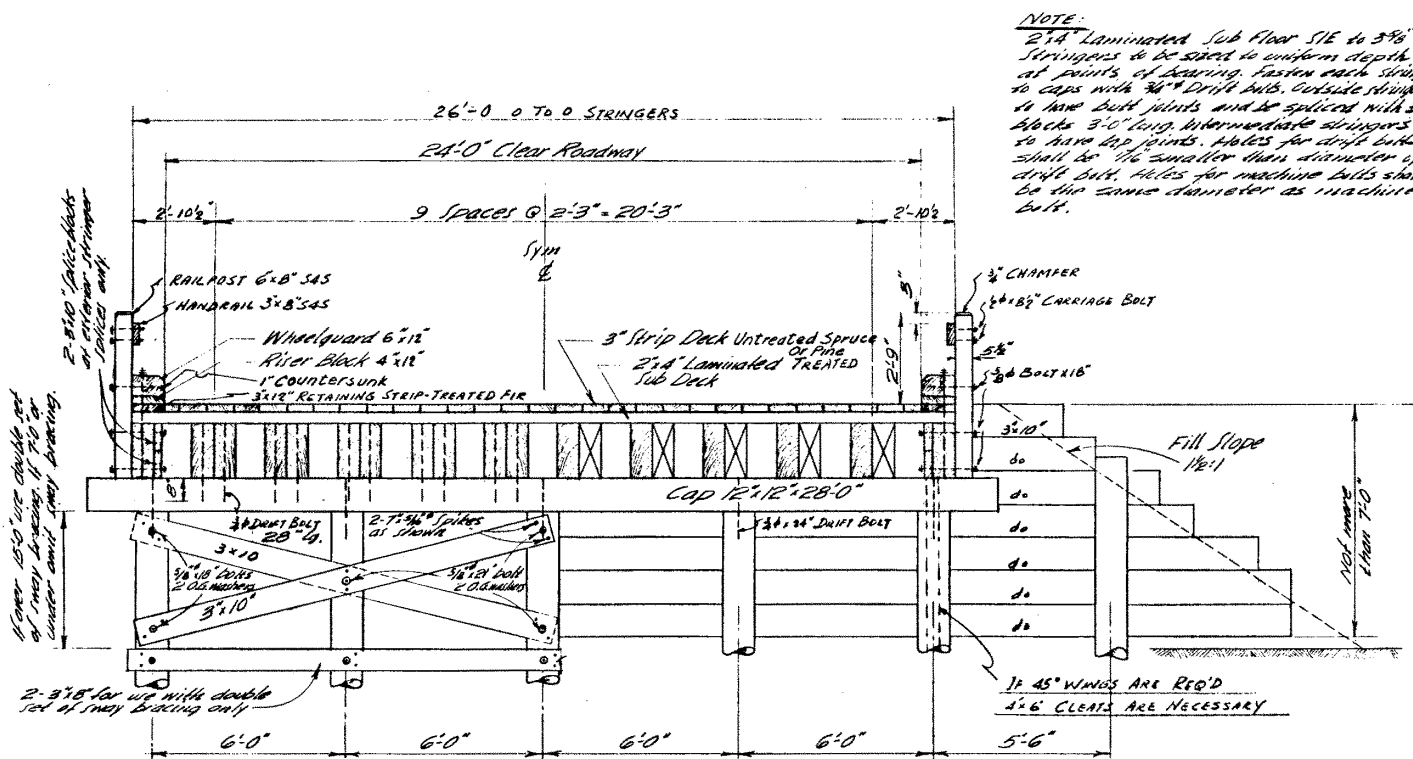
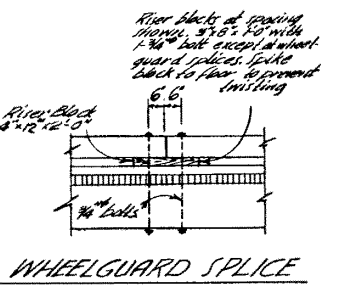
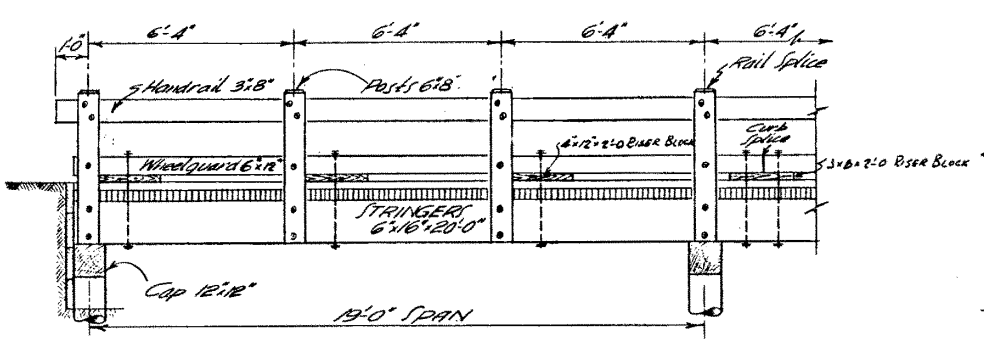
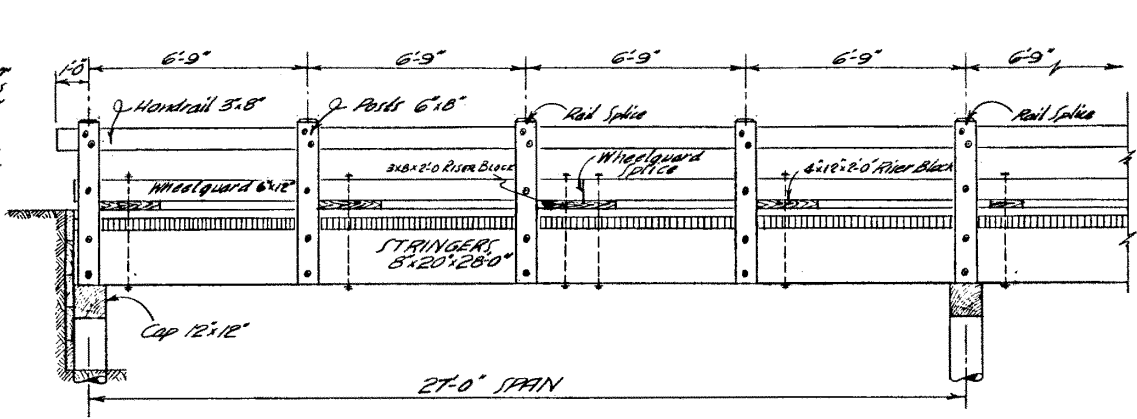


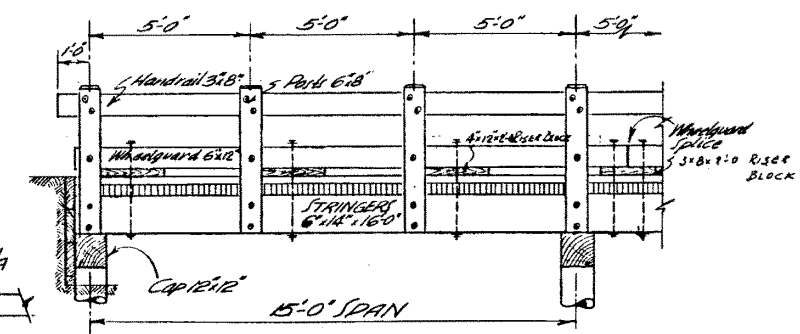
DESIGNED BY: M.C. Jan 18, 1949
 DRAWN BY: M.C. Jan 24, 1949
 CHECKED BY: H.S.L. Apr 26, 1949
 TRACED BY:



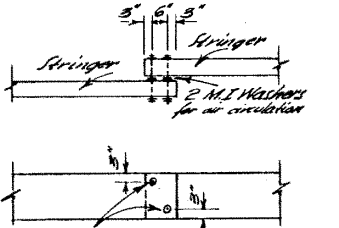
TYPICAL HALF SECTION OVER CAP AND AT MIDSPAN
 ALSO SHOWING BRACING DETAILS AND SHEATHING DETAILS
 CROSS SECTION 27'-0" SPAN BRIDGES



WHEELGUARD SPLICE



ELEVATION VIEWS



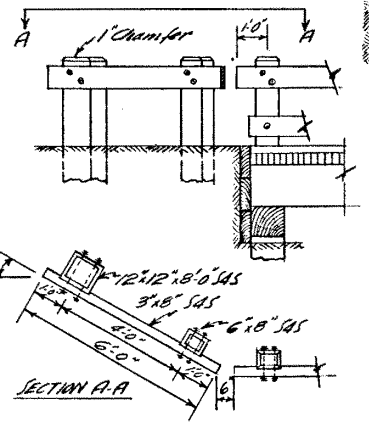
STRINGER LAP DETAIL

IMPORTANT FOR 20" DEEP STRINGER

Railposts 6x8 S&S, chamfered 3/4" at top.
 Handrail 3x8 S&S fastened to railposts with 1/2" carriage bolts.
 Wheelguard 6x12 S&S, fastened to outside stringer
 and to railpost with 3/4" bolts at spacing shown.

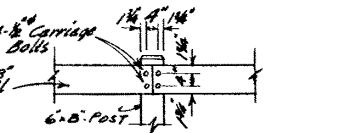
NOTE: Spacing dimensions at
 (1) than (2) edge of interior stringer
 end are for multiple spans only.
 For single span bridges these
 same dimensions are to be center
 to center of stringers.

NOTE: LAMINATED FLOOR
 No piece of 2 1/4" laminated flooring shall be spliced more
 than once and no piece shall be less than 8 feet in length.
 Splices shall be made only over the centerline of stringers
 and shall be staggered so that in splice will occur along
 any stringer other than in every fourth piece of flooring.
 At least every fourth piece of flooring shall be the full
 distance between handrail posts.
 Laminated flooring to be fastened to alternate stringers
 with 20d nails, and nailed to adjacent strips with 20d
 nails at 18" centers, staggered. Use 60d nails to nail strip deck.
PAINTING: Railposts, handrail and wheelguard shall be
 given three coats of approved white paint.



DETAIL AT END OF BRIDGE

SPECIFICATIONS: Permissible fiber stress 1400 psi. Selected fir
 DEAD LOAD: Timber 50 lbs. per cu ft.
 LIVE LOAD: A.S.S. 110, 1944. H-15 impact omitted.



HANDRAIL SPLICE

SUPERSEDED

By S-519

PROVINCE OF ALBERTA
 DEPARTMENT OF PUBLIC WORKS
 BRIDGE BRANCH

1949 STANDARD TIMBER SPANS

24'-0" ROADWAY

SECONDARY HIGHWAY

SCALE: 3/4" = 1'-0" Except as Noted DATE: Mar. 16, 1949

DWG. NO. 5502 SHEET 2 of 4 sheets

TYPICAL HALF SECTION OVER CAP AND AT MIDSPAN
 CROSS SECTION 15'-0" & 19'-0" SPAN BRIDGES

APPROVED BY: *[Signature]*
 DATE: April 26, 1949

No.	Date	Description
3		
2		
1		
		REVISIONS