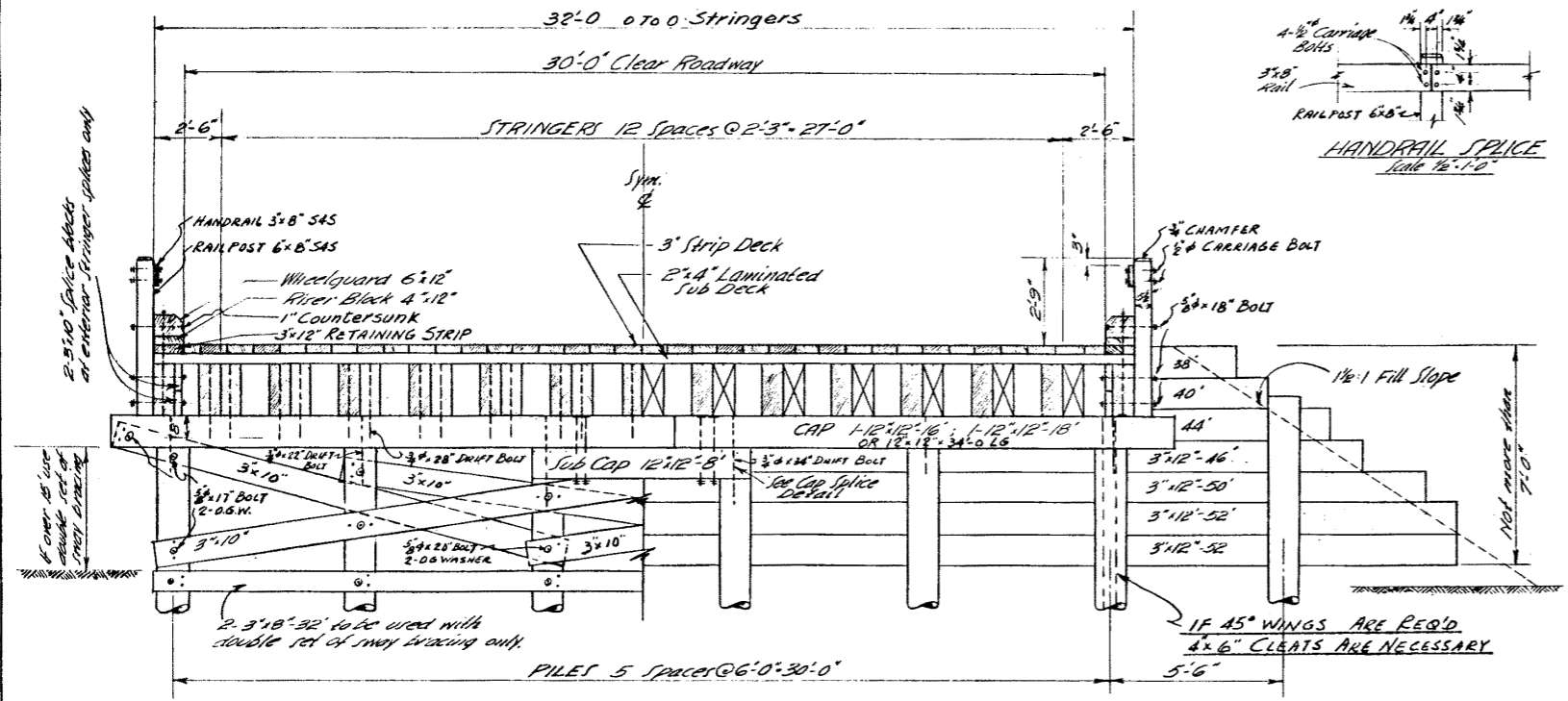


DELIVERED 4: M.C. Jan. 18, 1949
 DRAWN 4: M.C. Jan. 28, 1949
 CHECKED 4: M.C.
 TRACED 4:

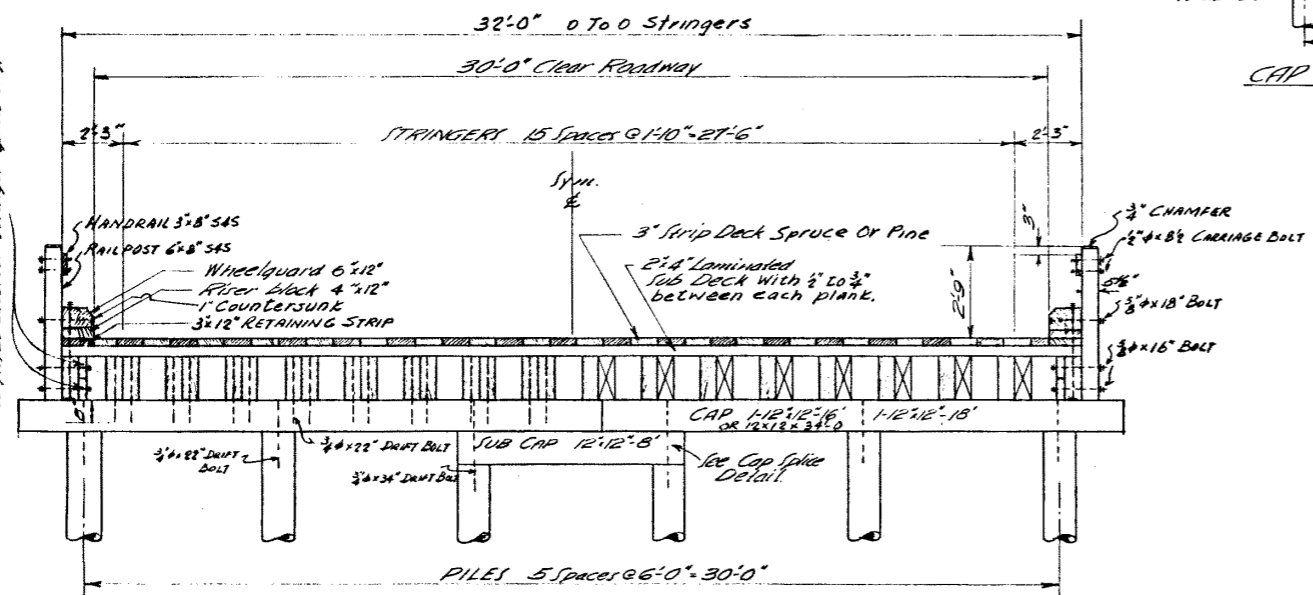
REVISED 4: M.C. Mar. 12, 1949



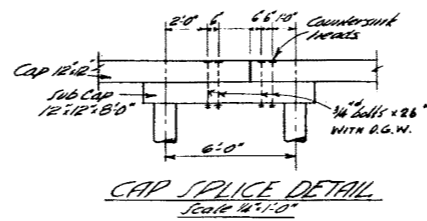
TYPICAL HALF SECTION OVER CAP ALSO SWAY BRACING DETAILS
 TYPICAL HALF SECTION AT MIDSPAN ALSO SHEATHING DETAILS

CROSS SECTION 27'-0" SPAN BRIDGES

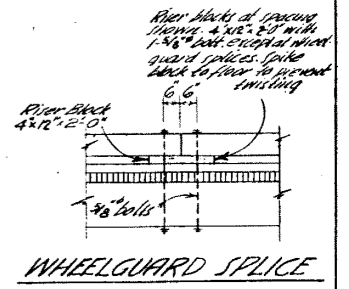
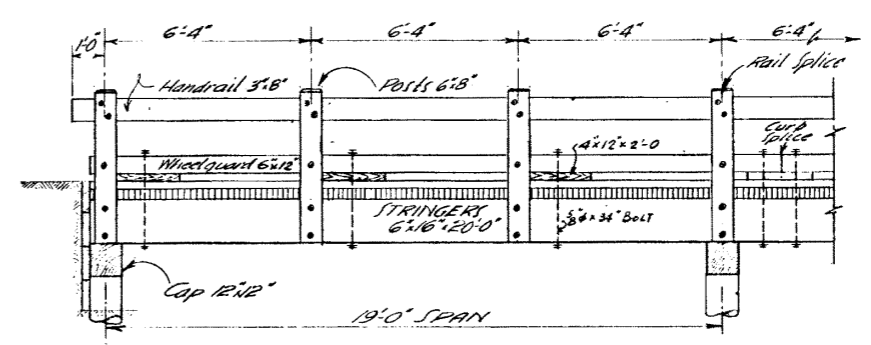
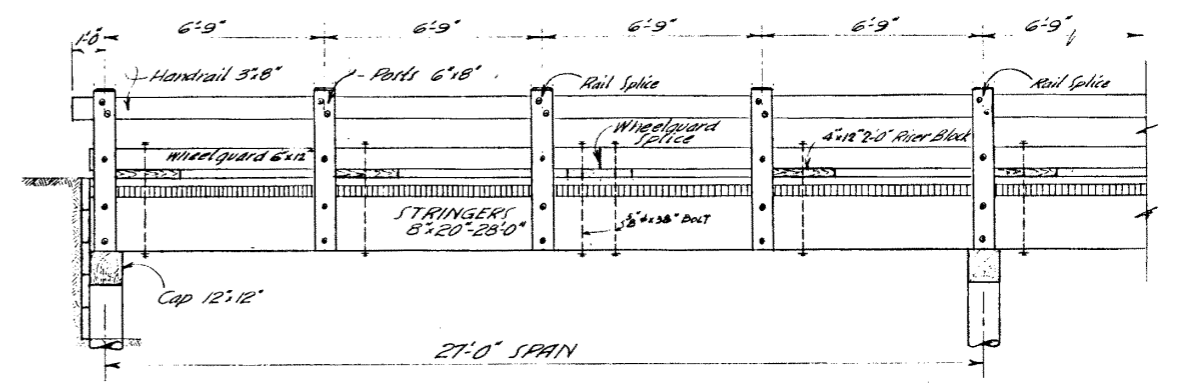
NOTE: Stringer spacing dimensions as shown (to edge of interior stringers) are for multiple spans only. For single span bridges these same dimensions are to be center to center of stringers.



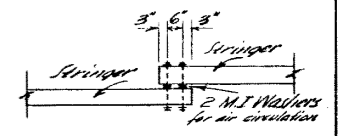
TYPICAL HALF SECTION OVER CAP
 TYPICAL HALF SECTION AT MIDSPAN
 CROSS SECTION 15'-0" & 19'-0" SPANS



CAP SPLICE DETAIL Scale 1/4" = 1'-0"

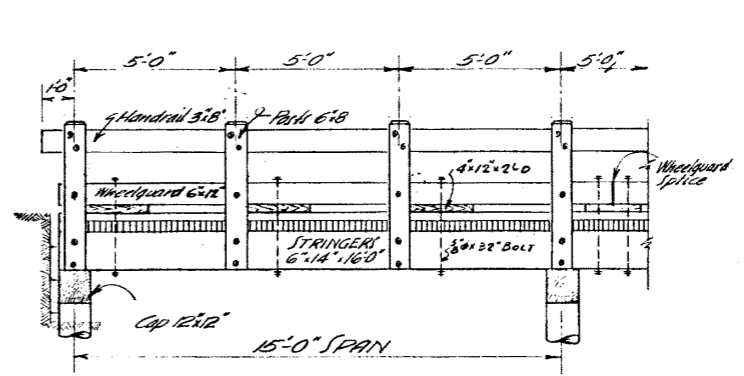


WHEELGUARD SPLICE



STRINGER LAP DETAIL Scale 3/8" = 1'-0"

IMPORTANT FOR 20" DEEP STRINGERS



ELEVATION VIEWS

SPECIFICATIONS: Permissible fibre stress, 1400 lbs. per sq. in. Coast Fir
 Dead Load: Timber 50 lbs. per cu. ft.
 Live Load: A.A.S.H.O. 1944, H15 with impact omitted.

Stringers: Stringers shall be sized to uniform depth at points of bearing, each fastened to caps with 4x4 drift bolts as shown. Outside stringers to have butt joints and be spliced with 3' blocks 3' long. Interior stringers to have lap joints. Holes for drift bolts shall be 1/8" smaller than diameter of drift bolts. Holes for machine bolts shall be the same diameter as machine bolts.

Painting: Railposts, Handrail and wheel guard shall be given three coats of approved white paint.

APPROVED 4: _____
 DATE: _____ BRIDGE ENGINEER

SUPERSEDED

By S-519

No.	Date	DESCRIPTION
3		
2		
1		
REVISIONS		
PROVINCE of ALBERTA DEPARTMENT of PUBLIC WORKS BRIDGE BRANCH		
1949 STANDARD TIMBER SPANS 30'-0 ROADWAY MAIN HIGHWAY		
SCALE: 3/8" = 1'-0" Except as Noted Date Mar. 12, 1949 DRAWING NO. S-503 SHEET 3 of 3 sheets		