

**- BILL OF HARDWARE -**

MARK	SIZE	TYPE	WASHERS AND NUTS	PLACING
1	3/8"x22"	Drills	NIL	Caps & Subcaps to Piles, caps to bents
2	3/8"x22"	Headless Drills	NIL	Stringer & Curbs to Caps
3	1"x21"-Stud	Thread both Ends	2-1 1/8" Bevel	with nuts - Inter Stringer bolts for Type A Stringers
4	1"x19"-Stud	Thread both Ends	1-1 1/8" Bevel 1-1 1/8" Flat	Curbs to all Stringers
5	3/8"x11"-Stud	Thread both Ends	1-3/4" O.G.	1 Nut, Timber Posts to Curbs
6	3/8"x13"-Stud	Thread both Ends	1-3/4" O.G.	1 Nut Precast Posts to Curbs
7	3/8"x10"	Machine	2-3/8" Flat	Precast Rails to Posts
8	3/8"x9"	Carriage	2-3/8" Flat	Timb Handrail to Timb. Post
9	3/8"x26"	Machine	2-3/8" O.G.	Cap Splices (1 per Splice)
10	3/8"x26"	Machine	2-1 1/8" Beveled	Curb end to Curb end
11	3/8"x22"	Machine	2-3/8" O.G.	Double Sway Brac. to Cap
12	3/8"x20"	Machine	2-3/8" O.G.	Single Sway Brac. to Cap

**TREATMENT OF TIMBER - IMPORTANT**

(1) Pile tops under caps shall be coated with 3 applications of creosote oil and thoroughly covered with roofing pitch.

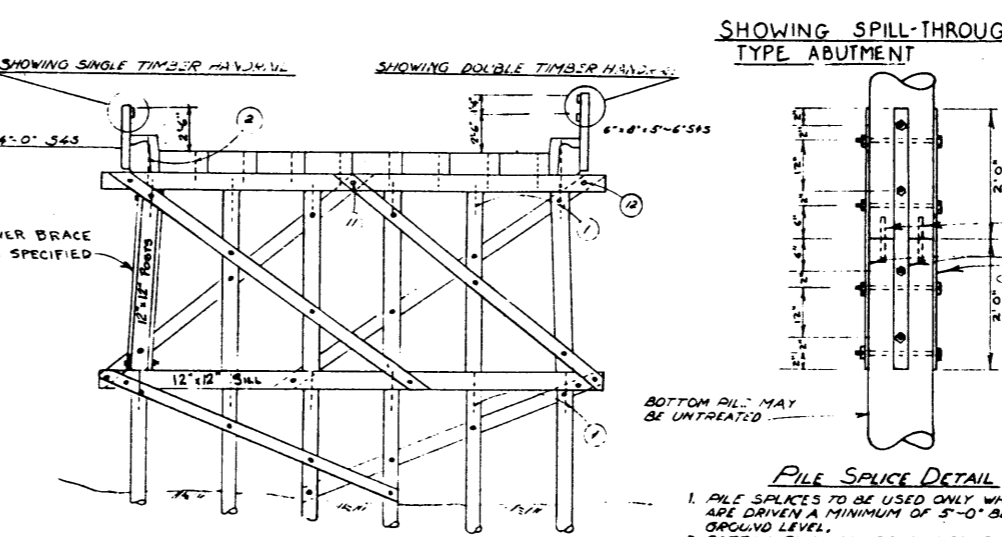
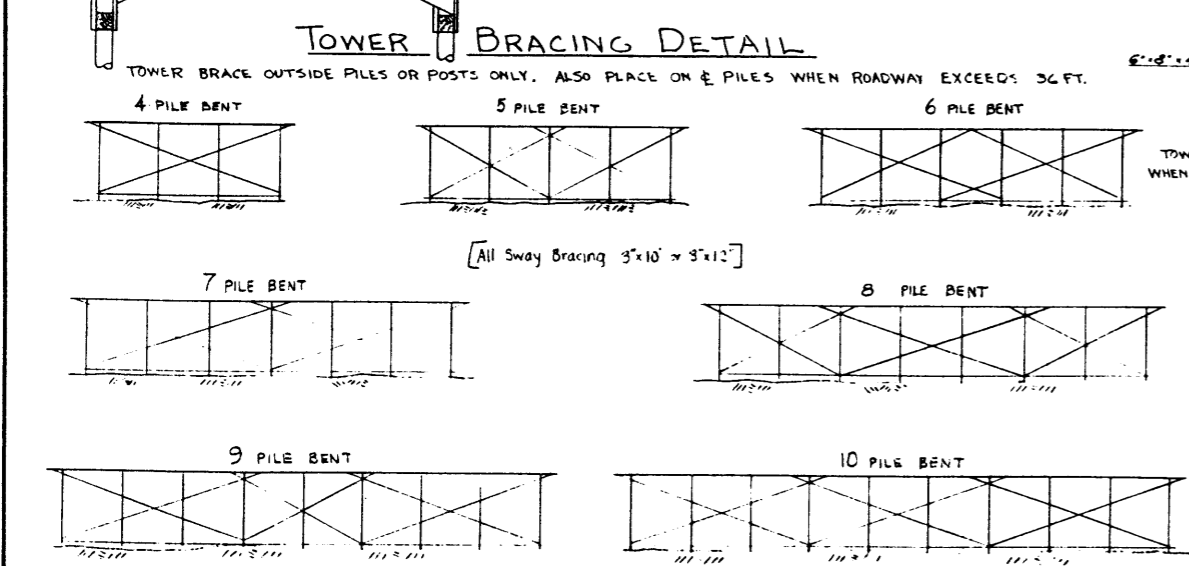
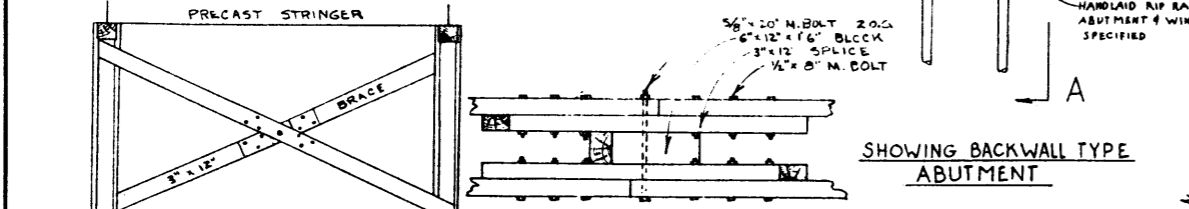
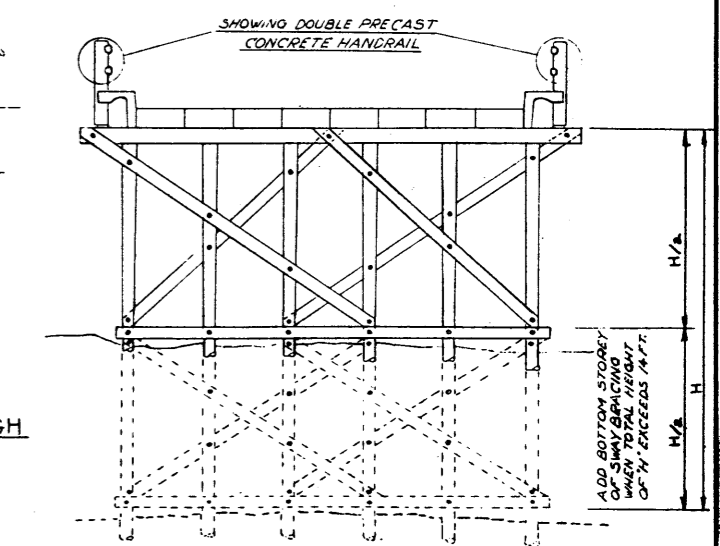
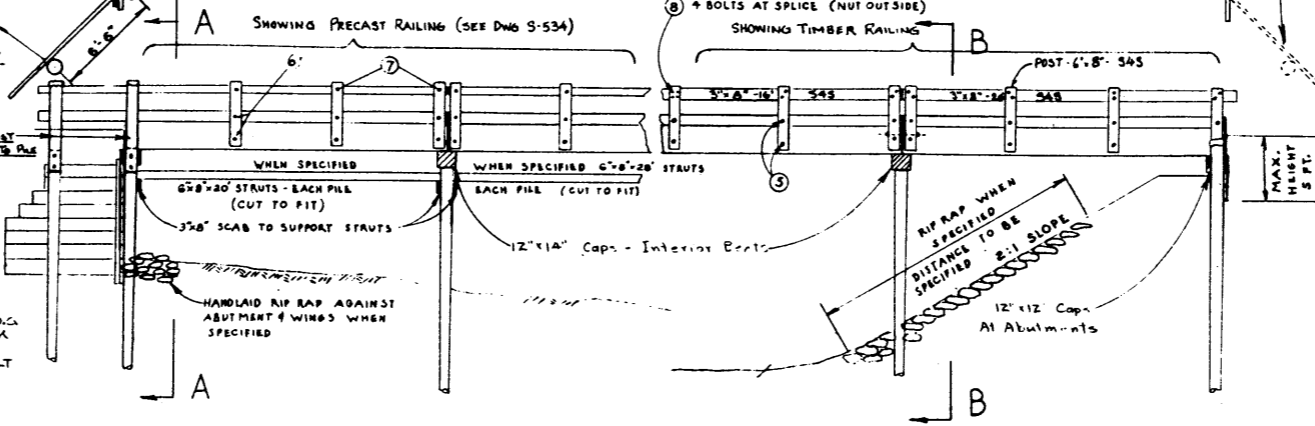
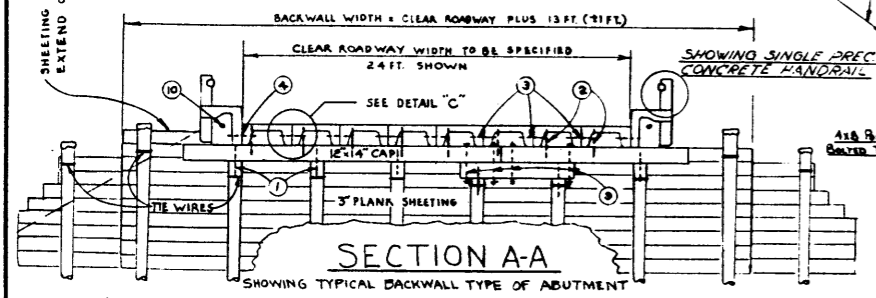
(2) Exposed pile tops shall be treated as in (1), and in addition shall be covered with 12 ga. galvanized sheet iron, of a size 4" greater in diameter than the pile. Neatly trim iron, bend down, and fasten to pile with galvanized roofing nails.

(3) Treated timber shall be carefully handled, so as to avoid breaking of outer fibers and bruising or penetrating the surface. Tools to be used only on end of timbers.

(4) All cuts and abrasions in treated timber, shall after careful trimming, be coated with 2 applications of creosote, and then be thoroughly covered with hot roofing pitch.

(5) Treated piles must not be dapped for sway bracing in the field.

(6) Bolt holes bored after treatment shall be carefully treated with creosote. Any unfilled holes shall be sealed with creosoted plugs.



**PILE SPLICE DETAIL** Scale: 3/4" = 1'-0"

- PILE SPLICES TO BE USED ONLY WHEN THEY ARE DRIVEN A MINIMUM OF 5'-0" BELOW GROUND LEVEL.
- BOTTOM PILE MAY BE UNTREATED.
- OLD GRADER BLADES MAKE GOOD SPLICE IRONS.

NOTES: 1. TWO REFLECTORS AT EACH END BRIDGE.  
2. PILE SPACING NOT TO EXCEED 5'-0" ON SQUARE SPANS

**STANDARD PRECAST BRIDGES**

**WITH**

**TREATED TIMBER SUBSTRUCTURE**

GOVERNMENT OF THE PROVINCE OF ALBERTA  
DEPARTMENT OF HIGHWAYS  
BRIDGE BRANCH, EDMONTON

FILE NO. \_\_\_\_\_ HWY. NO. \_\_\_\_\_ DWG. NO. **S-512A**  
LOCATION \_\_\_\_\_ SCALE **3/16" = 1'-0"**  
STREAM \_\_\_\_\_ SHEET **1** OF **2**

NO.	DATE	DESCRIPTION	BY