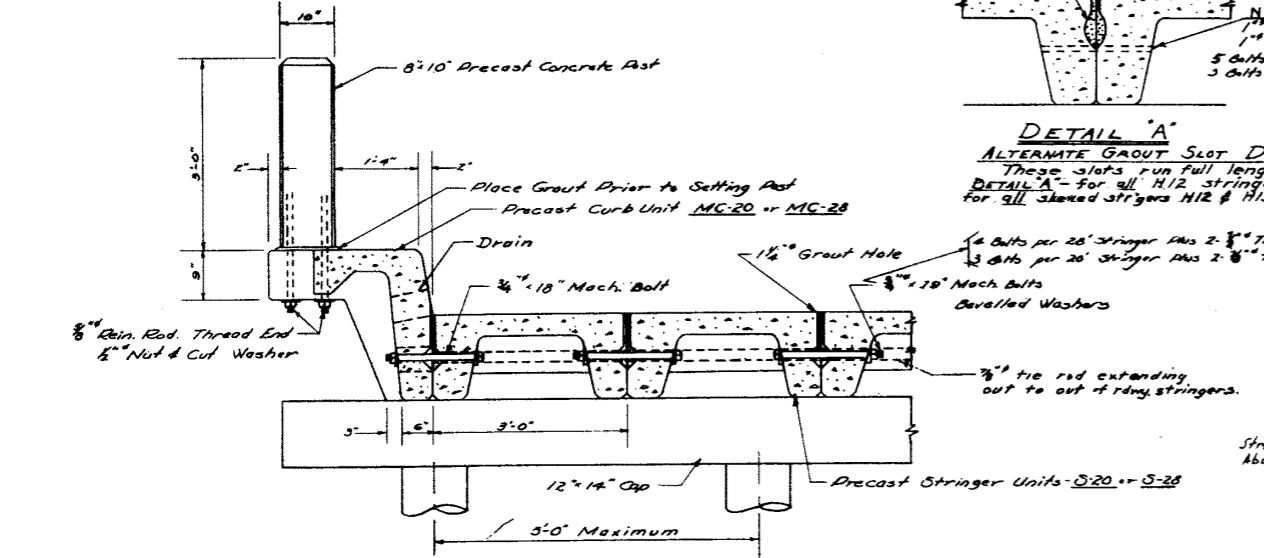
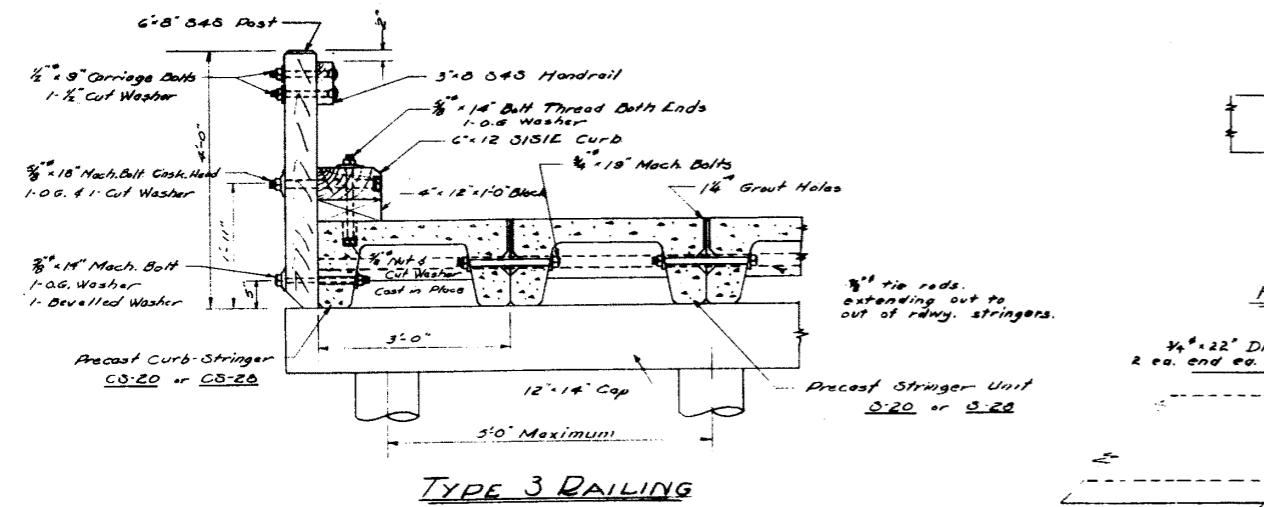


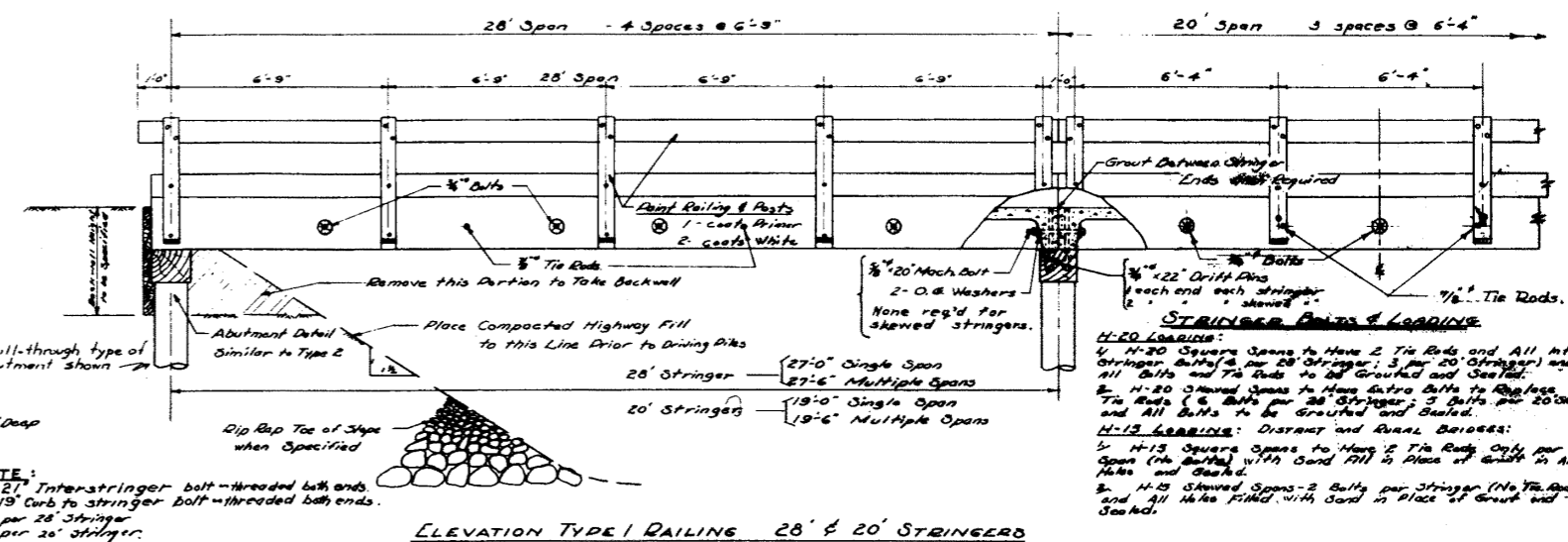
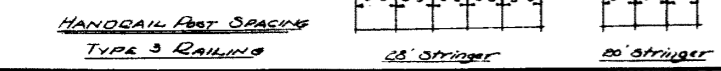
TYPE 1 RAILING



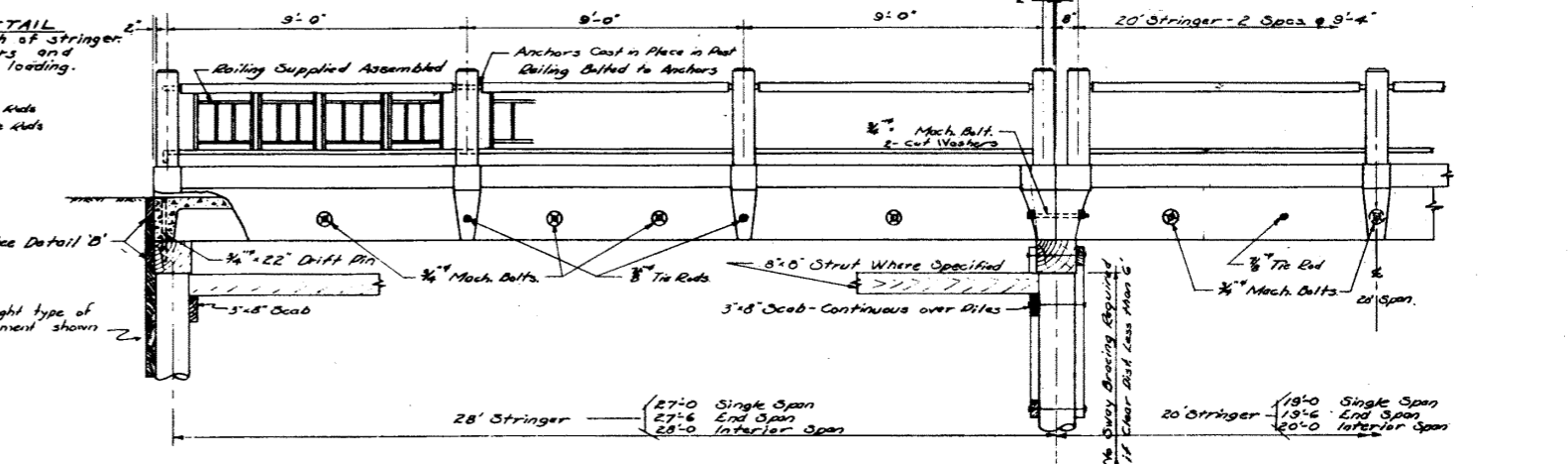
TYPE 2 RAILING



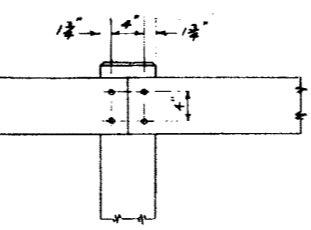
TYPE 3 RAILING



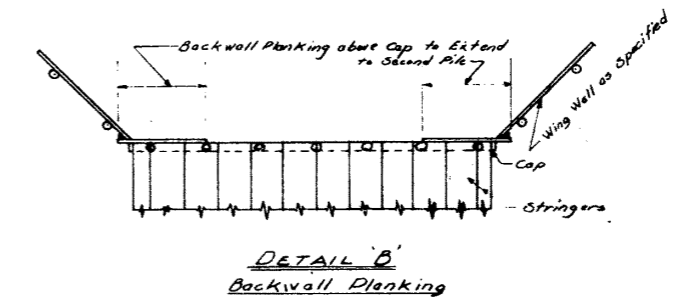
ELEVATION TYPE 1 RAILING 28' & 20' STRINGERS



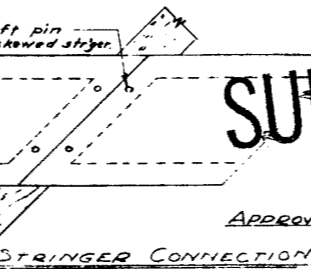
ELEVATION TYPE 2 RAILING 28' & 20' STRINGERS



HANDRAIL SPLICE



DETAIL B Backwall Planking



SKEW STRINGER CONNECTION

SUPERSEDED

APPROVED BY: *[Signature]*
Chief Bridge Engineer

PRECAST UNIT WTS.

MK.	102	MK.	125
S-20	7,700	S-28	10,800
C-20	7,500	C-28	9,500
C5-20	7,700	C5-28	10,800

REVISIONS

NO.	DATE	DESCRIPTION	BY
1	20 July '51	Detail 'A' revision	J.P.P.
2	16 July '51	SAW stringer revisions	J.P.P.
3	20 Apr '51	Leading Notes Added	J.P.P.
4	7 Apr '51	Revised	J.P.P.

- NOTES:**
1. Timber Dwg. 5-319 indicates that you apply for timber in connection with precast bridges except pile spacing to be 5'-0" maximum.
 2. Field Treat Pile Tops, Holes & All Treated Timber as per Drawings for Treated Timber Bridges.
 3. 1/4" Tie Rods May Supplement or Replace 1/4" or 1/2" Interstringer Bolts when Specified.
 4. Precast Units to be Lifted only at Holes Supplied Near Ends and in the upright position only.

1951 STANDARD PRECAST CONCRETE DECKS

GOVERNMENT OF THE PROVINCE OF ALBERTA
DEPARTMENT OF PUBLIC WORKS
BRIDGE BRANCH, EDMONTON

FILE NO. _____ HWY. NO. _____ DWG. NO. **S-512**
LOCATION _____ SCALE 1/4" = 1'-0"
SHEET 1 OF 1