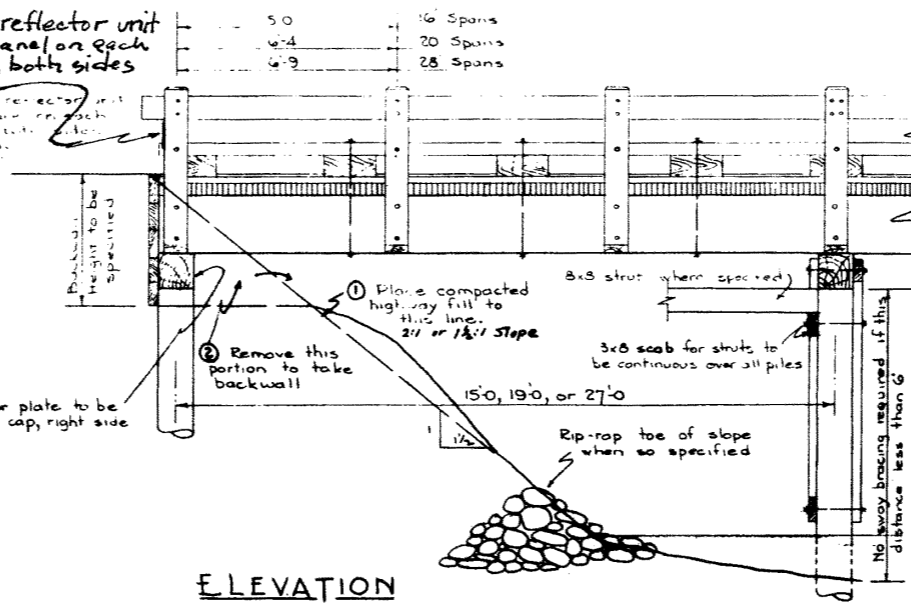
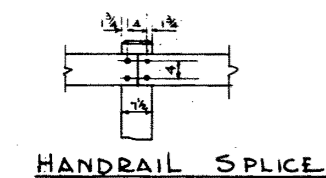


TYPICAL SECTION

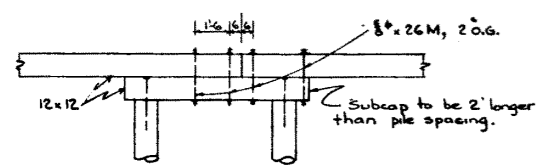


ELEVATION

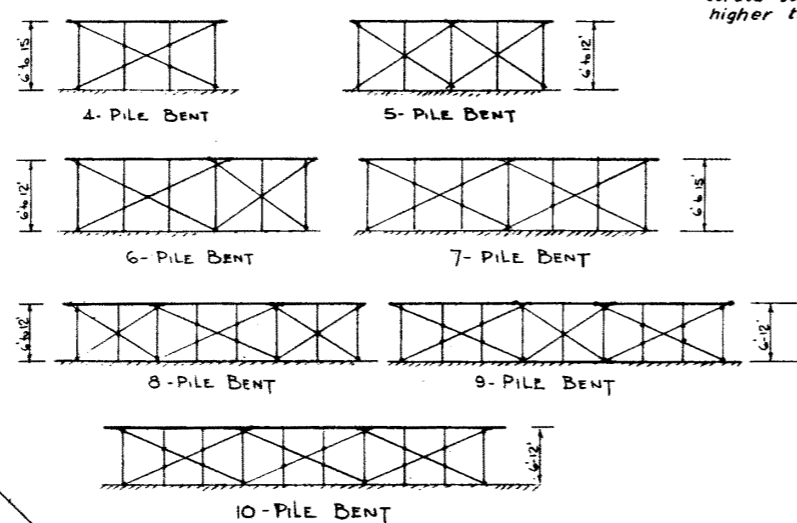
Showing spill-through type of abutment.  
Note: If this type of abutment not specified, struts to be placed for backwall fills higher than 8'



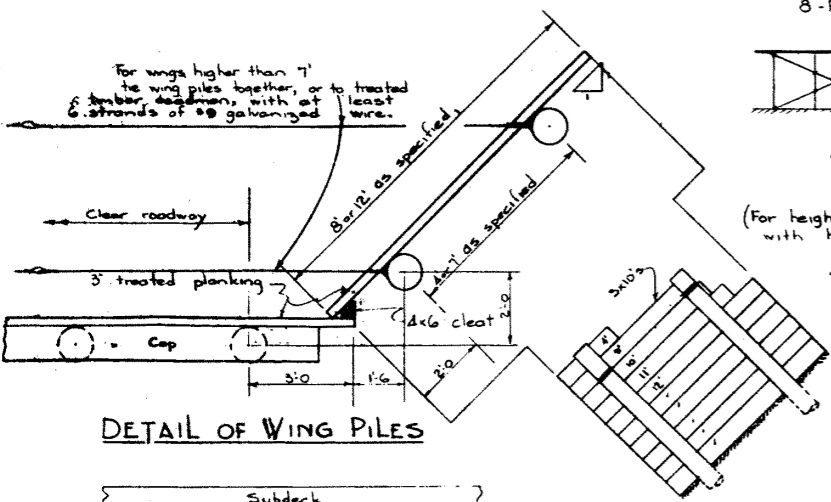
HANDRAIL SPLICE



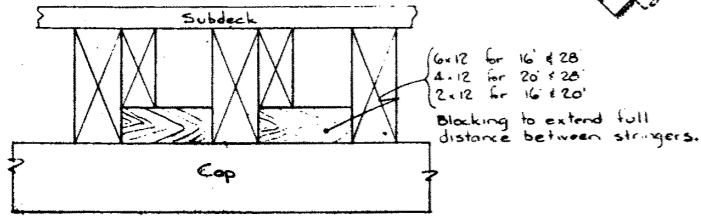
CAP SPLICE DETAIL



SWAY-BRACING DETAILS



DETAIL OF WING PILES



BLOCKING FOR DISSIMILAR STRINGERS

CLEAR ROADWAY WIDTH	NUMBER AND SPACING OF STRINGERS						NUMBER OF PILES PER CAP & SPACING LENGTH OF CAP					
	H-15			H-20			SPACING					
	SPAN	LENGTHS		SPAN	LENGTHS		SKEW		ANGLE			
20'	12 @ 12'	10 @ 10'	2' 4 1/2"	12 @ 12'	10 @ 10'	2' 4 1/2"	4 @ 6'	4 @ 7'	5 @ 5'	5 @ 6'	6 @ 5'	6 @ 5'
	1-9 1/2'	1-9 1/2'	2' 4 1/2"	1-9 1/2'	1-9 1/2'	2' 4 1/2"	24'	25'	27'	29'	34'	34'
24'	14 @ 14'	12 @ 12'	2' 3 3/4"	17 @ 17'	17 @ 17'	13 @ 2' 1 1/4"	5 @ 6'	5 @ 6'	5 @ 6'	6 @ 5'	7 @ 5'	7 @ 5'
	1-11 1/2'	1-11 1/2'	2' 3 3/4"	1-7'	1-7'	2' 1 1/4"	28'	29'	31'	34'	34'	40'
26'		18 @ 18'	2' 1 1/2"	18 @ 18'	14 @ 2' 1 1/4"	2' 1 1/4"	6 @ 5'	6 @ 5'	6 @ 5'	7 @ 5'	8 @ 5'	8 @ 5'
		1-7'	1-7'	1-7'	1-7'	2' 1 1/4"	30'	31'	33'	37'	42'	42'
27'		19 @ 19'	2' 0 1/4"	19 @ 19'	15 @ 2' 0 1/4"	2' 0 1/4"	6 @ 5'	6 @ 5'	7 @ 5'	7 @ 5'	8 @ 5'	8 @ 5'
		1-7'	1-7'	1-7'	1-7'	2' 0 1/4"	31'	32'	34'	36'	44'	44'
30'	18 @ 18'	15 @ 15'	2' 2 3/4"	22 @ 22'	17 @ 2' 1 1/4"	1-11 1/2"	7 @ 5'	7 @ 5'	7 @ 5'	8 @ 5'	9 @ 5'	9 @ 5'
	1-10'	1-10'	2' 2 3/4"	1-6'	1-6'	1-11 1/2"	34'	35'	38'	42'	48'	48'
44'		31 @ 31'	1-6 1/2"	31 @ 31'	24 @ 2' 1 1/4"	1-11 1/2"	9 @ 5'	9 @ 5'	10 @ 5'	10 @ 6'	12 @ 5'	12 @ 5'
		1-6 1/2"	1-6 1/2"	1-11 1/2"	1-11 1/2"	1-11 1/2"	48'	50'	53'	59'	68'	68'
50'		35 @ 35'	1-6 1/2"	35 @ 35'	27 @ 2' 1 1/4"	1-11 1/2"	11 @ 5'	11 @ 5'	11 @ 5'	12 @ 5'	14 @ 5'	14 @ 5'
		1-6 1/2"	1-6 1/2"	1-11 1/2"	1-11 1/2"	1-11 1/2"	54'	56'	60'	66'	76'	76'
56'		39 @ 39'	1-6 1/2"	39 @ 39'	30 @ 2' 1 1/4"	1-11 1/2"	12 @ 5'	12 @ 5'	13 @ 5'	14 @ 5'	16 @ 5'	16 @ 5'
		1-6 1/2"	1-6 1/2"	1-11 1/2"	1-11 1/2"	1-11 1/2"	60'	62'	66'	73'	85'	85'

GENERAL NOTES

DESIGN:  
Loading - A.A.S.H.O. H15 & H20-44  
Specification - A.A.S.H.O. - 1957

CONSTRUCTION:

LAMINATED FLOORING - 2x4 laminated floor 5/8" x 3/4". No piece of flooring to have more than four splices and no piece shall be less than 8' in length. Splices shall be made only over 4" of stringers, and shall be staggered so that splices will not occur along any one stringer oftener than in every fourth piece of flooring. Flooring to be tenailed to alternate stringers with 16d nails and to adjacent pieces with 8d nails @ 18" centers, staggered.

STRINGERS to be sized to uniform depth at points of bearing. Each stringer to be fastened to cap with 3/4" drift bolts. Outside stringers to have butt joints, interior stringers lap.

BOLT HOLES holes for bolts and drift bolts to be same diameter as bolt.

Field Treatment of Timber (a) Pile tops under caps shall be coated with 3 applications of creosote oil and thoroughly covered with roofing pitch. (b) Exposed pile tops shall be treated as in (a), and in addition shall be covered with 12ga. galv. sheet iron, of a size 4" greater in diameter than the pile. The iron shall be neatly trimmed bent down, and fastened to the pile with galvanized roofing nails. (c) Treated timber shall be carefully handled, so as to avoid breaking of outer fibers and penetrating the surface. Tools to be used only on end of timbers. (d) All cuts and abrasions in treated timber, shall after careful trimming, be coated with applications of creosote, and then be thoroughly covered with hot roofing pitch. (e) Paint top of stringers with one coat of creosote before laying subdeck. (f) Treated piles must not be dapped for sway bracing in the field. (g) Bolt holes bored after treatment shall be carefully treated with creosote. Any unfilled shall be sealed with creosoted plugs.

STRIPDECK Shall be fir 5/8" and shall be laid heartside down, with tight joints for unseasoned material. Planks to be spiked with 6" spikes @ 3' centers, staggered along the plank, with two spikes at end of plank. Stripdeck to be bevelled at end of bridge.

PAINTING Handrail, handrail posts & wheelguard to be given 3 (three) coats of approved good quality outside white paint.

MATERIAL

Treated Piling - Piling shall be Douglas Fir and pressure creosoted treated in conformity with C.S.A. Spec. 080-C3.  
Treated Timber - Timber shall be select structural grade Douglas Fir or Pacific Coast Hemlock pressure treated with creosote in conformity with C.S.A. Spec. 080-C2

**SUPERSEDED**  
BY 5-519-71 DEC 30/71

1951  
**STANDARD TIMBER SPANS**  
ALL SPANS - ALL ROADWAYS

GOVERNMENT OF THE PROVINCE OF ALBERTA  
DEPARTMENT OF PUBLIC WORKS  
BRIDGE BRANCH, EDMONTON

FILE NO. \_\_\_\_\_ HWY. NO. \_\_\_\_\_  
LOCATION SCALE Shown \_\_\_\_\_  
SHEET 1 OF 1 5-519

NO.	DATE	DESCRIPTION	BY

DATE \_\_\_\_\_ CHECKED BY \_\_\_\_\_