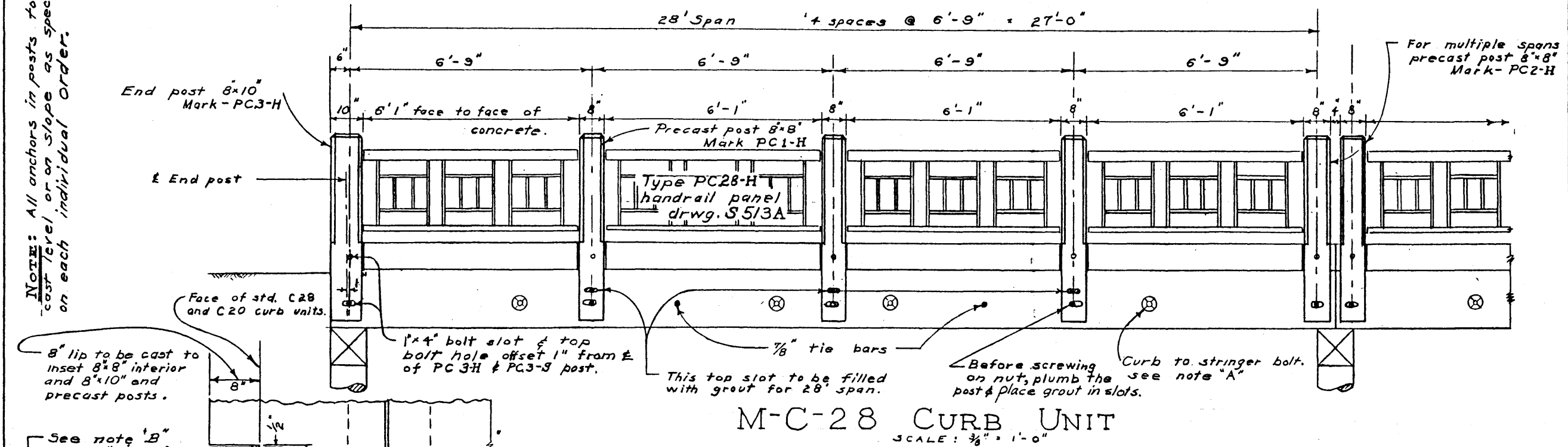


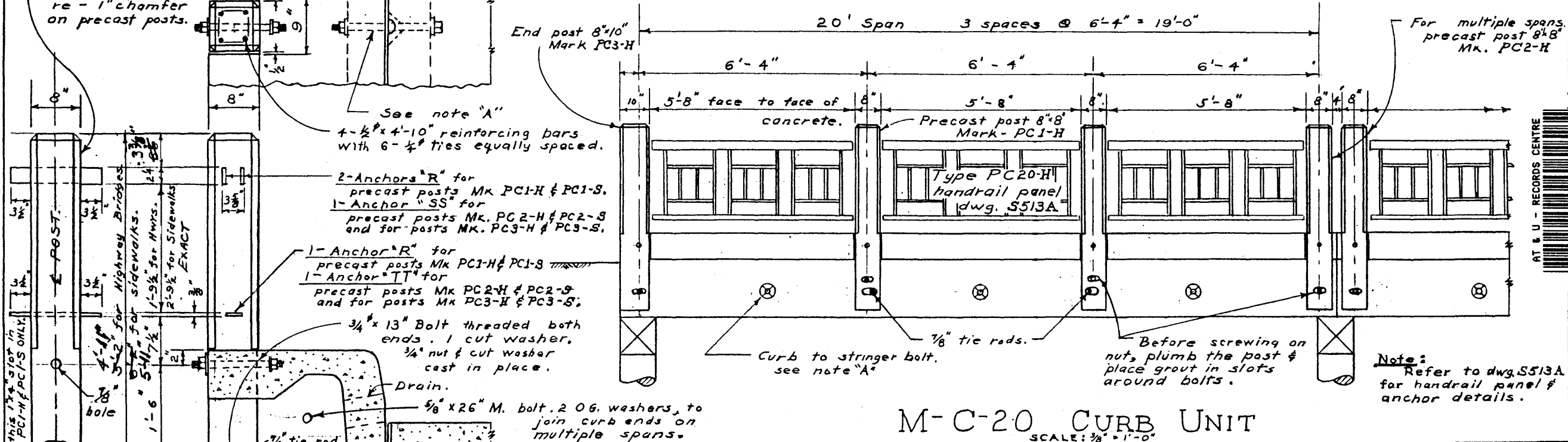
NOTE C

Handrails Mark PC28-H & PC20-H and posts Mark PC1-H, PC2-H, PC3-H shown are for Highway Bridges.
 For sidewalks, Handrail Panels shall be Mark PC28-S and PC20-S and posts shall be Mark PC1-S, PC2-S and PC3-S.
 THE ONLY DIFFERENCE between Highway and Sidewalk Panels and Posts being Panel Height and Post Height.

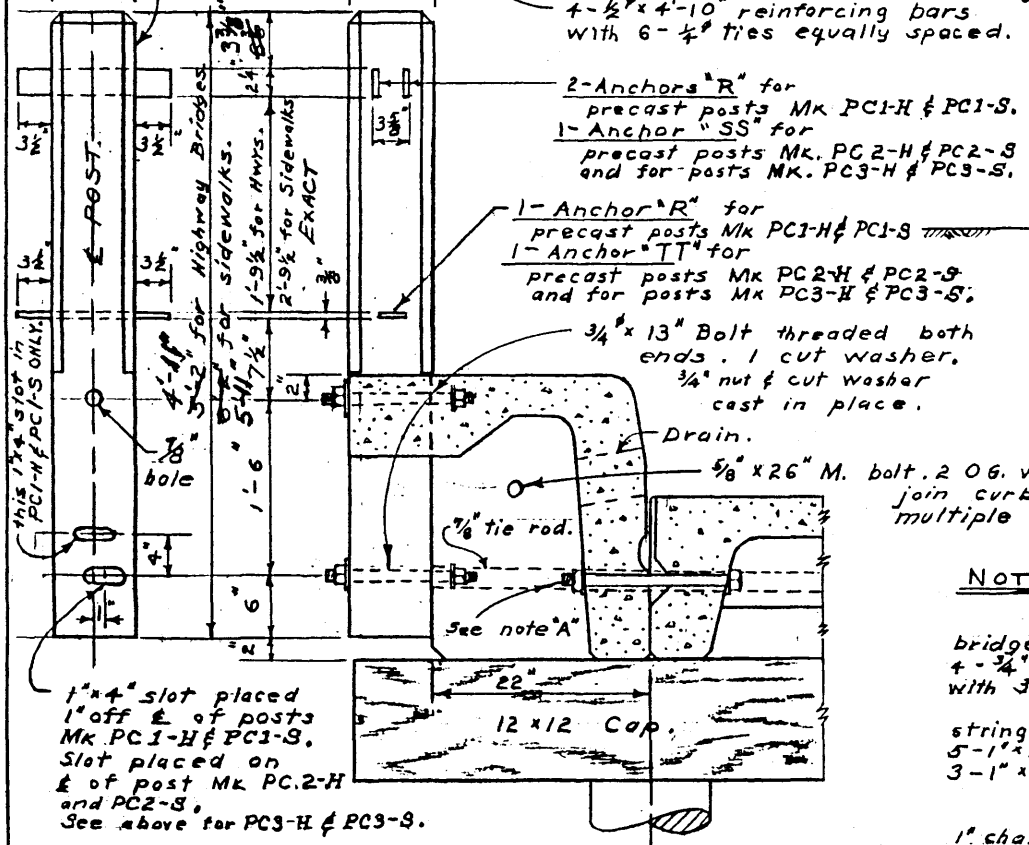
NOTE: All anchors in posts to be cast level or on slope as specified on each individual order.



M-C-28 CURB UNIT
 SCALE: 3/8" = 1'-0"



M-C-20 CURB UNIT
 SCALE: 3/8" = 1'-0"



SEC. THRU CURB UNIT
 SCALE: 3/4" = 1'-0"

NOTES:
 A - re stringer to curb bolts. Section shown is for H-15 stringer bridge on square using 2 7/8 tie rods together with 4 3/4 x 18 bolts per 28' span, & 2 7/8 tie rods together with 3 3/4 x 18 bolts per 20' span. Alternate section for use with H-12 stringers or for all skewed spans (not shown) requires 5 1/2 x 19 bolts threaded both ends per 28' span and 3 1/2 x 19 bolts " " per 20' span.
 B - re chamfer on precast posts. All precast posts are to have 1" chamfer all around - only on portion above curb.
 C - See note at top of sheet.

MC-28 & MC-20 CURB UNITS
 FOR
 28' & 20' PRECAST SPANS

SCALE: As Shown.
 DATE: Aug 8/51
 DETAILED BY: *B. J. S.*
 CHECKED BY: E. J. S.

DWG No.
S-525

